



Crown Field Support Engineering

Issue Date: 17 January 2014

Ref. No: GEN Go Online #0002

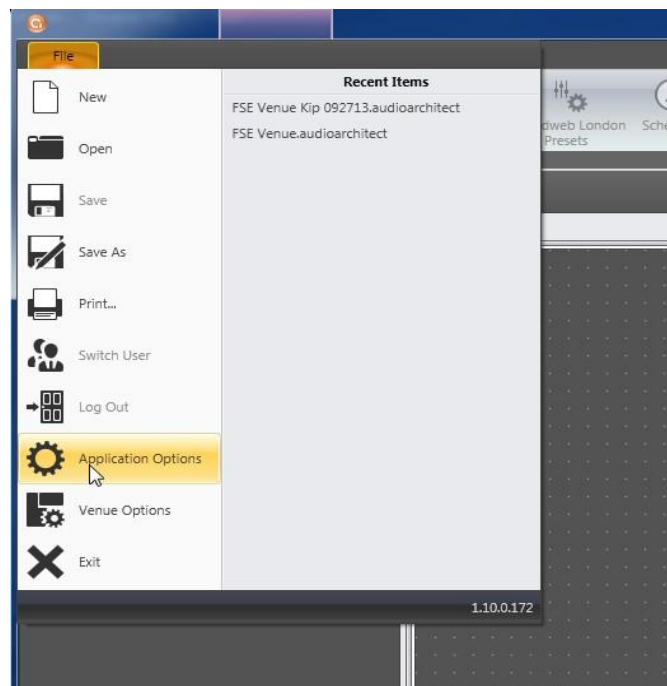
Subject: Basic “Go Online” w/ Audio Architect (Network Based Product)

Applicability: The following step by step instructions are for those needing to simply bring one or more Crown, network based, amplifiers up in Audio Architect. This note assumes Audio Architect has already been downloaded and installed on your PC. If not, you can copy and paste this link into your Browser which will take you directly to the Harman Pro web site where you can download, <http://archimedia.harman.com/en-US/software/hignet-audio-architect-v1101-windows> .

For this example we will be using a DCi amplifier. These steps can be used for any network based Crown amplifier that will work within Audio Architect. This note does not cover USB based amplifiers.

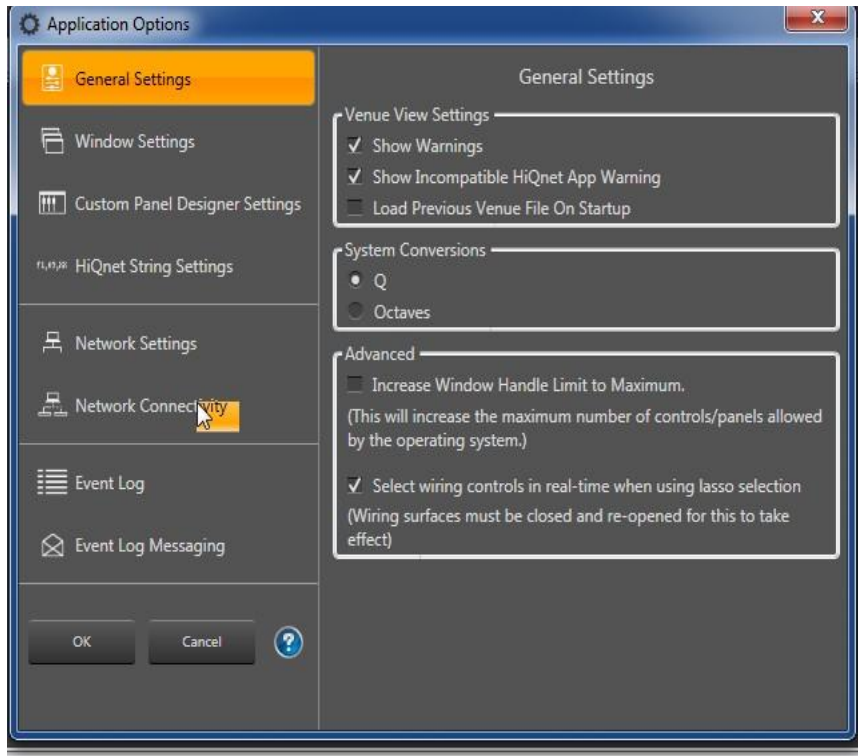
Step 1: Once you launch Audio Architect for the first time you may have to make sure the Network Connectivity portion in Audio Architect has your PC adaptors IP captured. **If you have previously found network products, you can go directly to Step 5.** We are assuming the PC setup side of this process has already been performed.

- With Audio Architect open, click on File at the upper right hand corner and select Application Options as shown below.

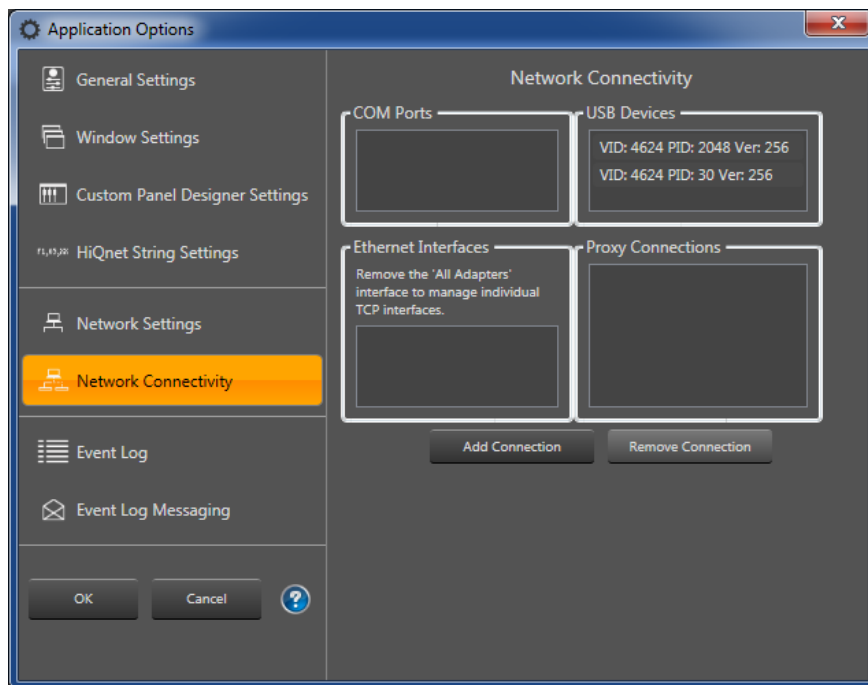


- Select The Network Connectivity option shown below.

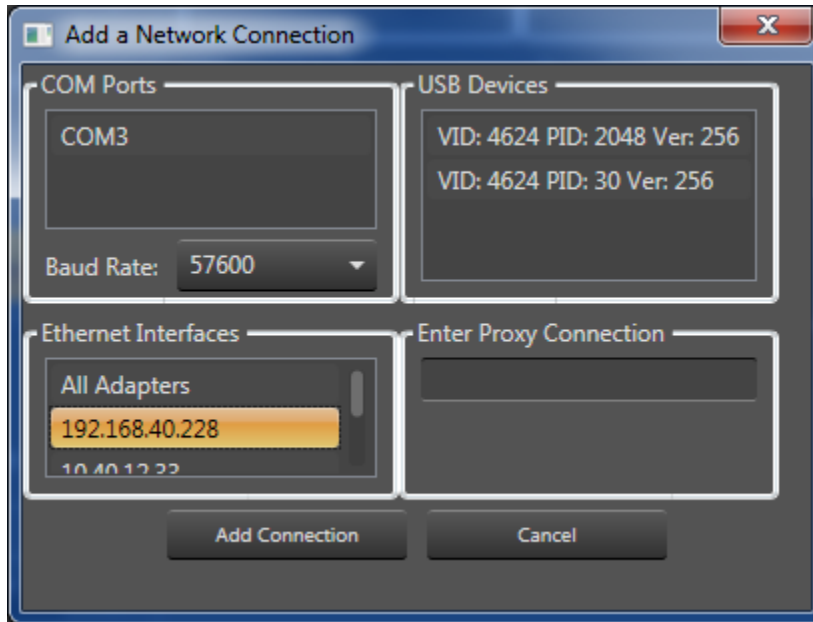




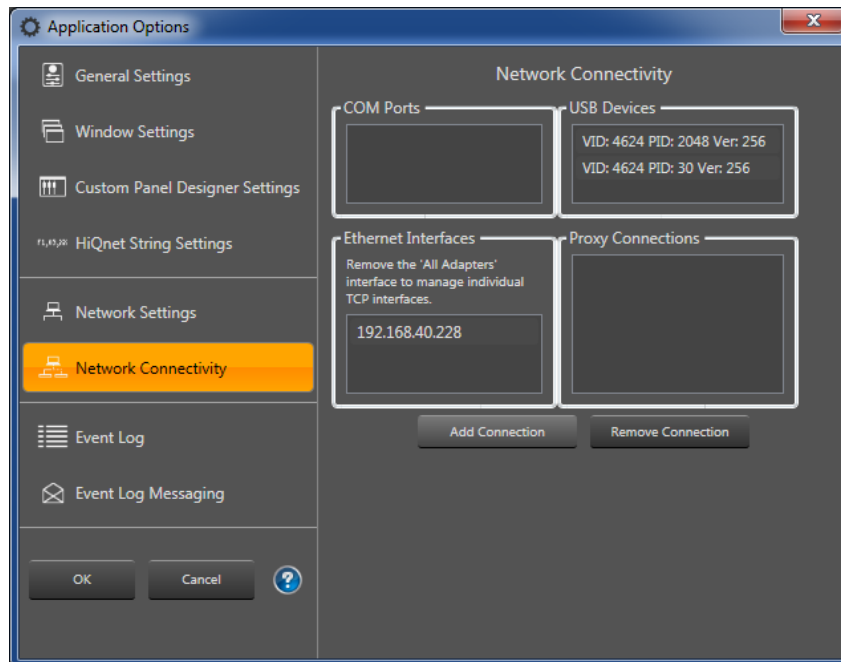
- The next window will have a box named Ethernet Interfaces.



- If no IP address is listed click Add Connection and a small window will pop up. Select the IP address of your PC and Click the Add Connection button.

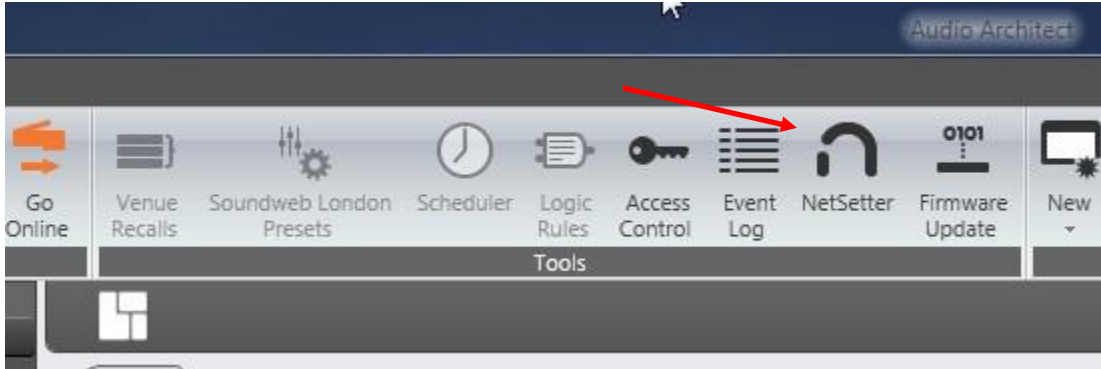


- Your IP address should now appear in the Ethernet Interfaces. Click OK to close.



Step 2: With the Network Connectivity portion complete, in the main menu bar of Audio Architect click on the icon in the Tools portion called NetSetter.

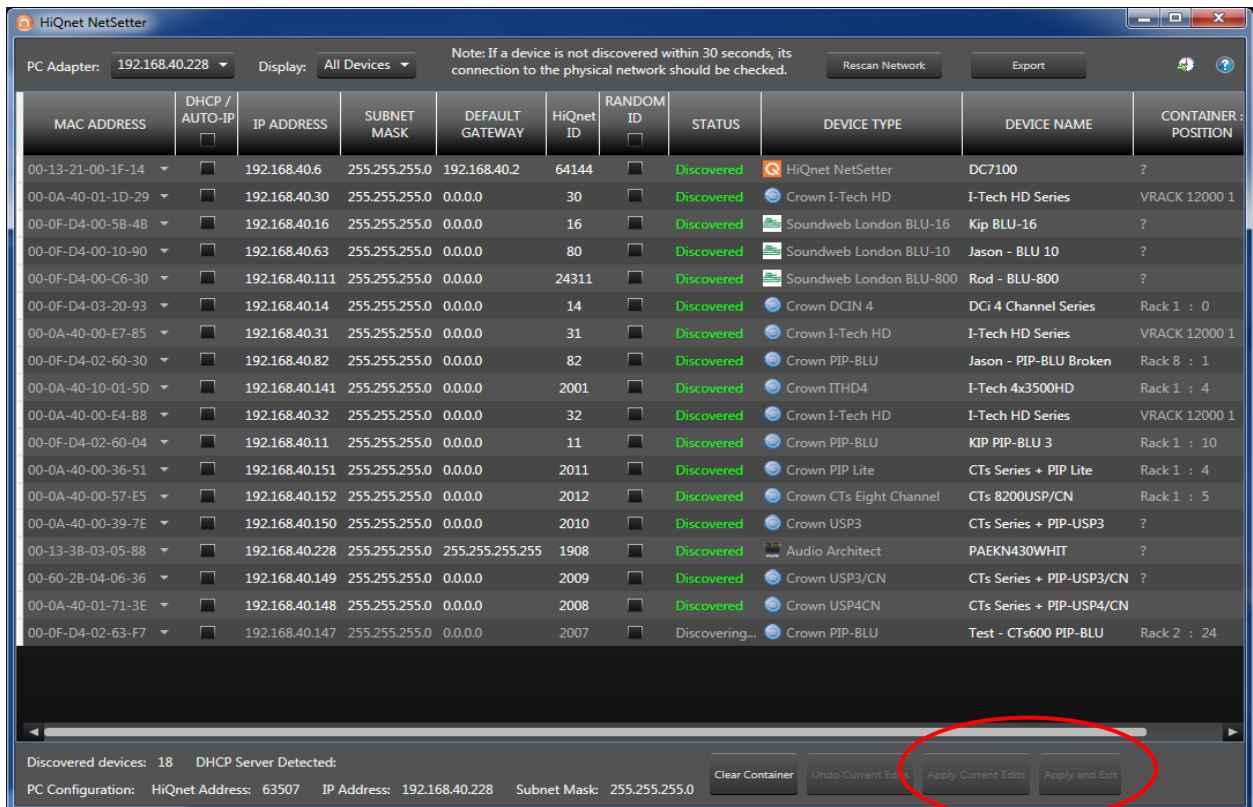
- Click NetSetter to launch.
- NetSetter is a utility program that allows you to set your IP and Subnet address along with your HiQnet ID.



Step 3: In NetSetter make sure the drop down box in the upper right corner for PC adaptor is that of your NIC card on your PC. If not click the arrow to open the drop down window and select the correct IP your PC is using.

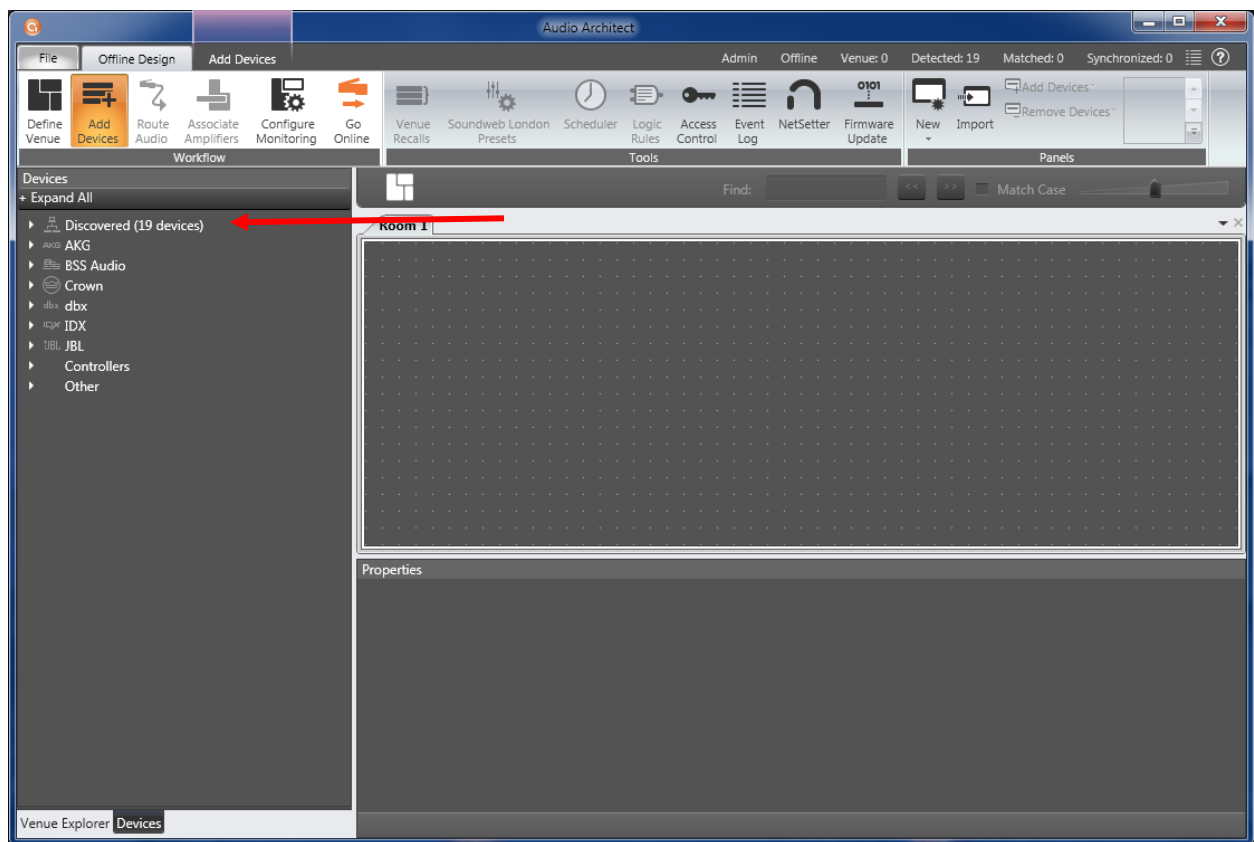
Step 4: NetSetter looks at the MAC address, once the amplifier appears you can click on the IP Address that appears and replace it with the correct IP address based off your PC IP Address being used, along with the Subnet Address.

- Next, click on the HiQnet ID and change it to the ID number you want to assign to this amplifier.
- **Also note:** IP Address and HiQnet ID are unique numbers, you CANNOT use the same IP and HiQnet number on other amplifiers on the same network.

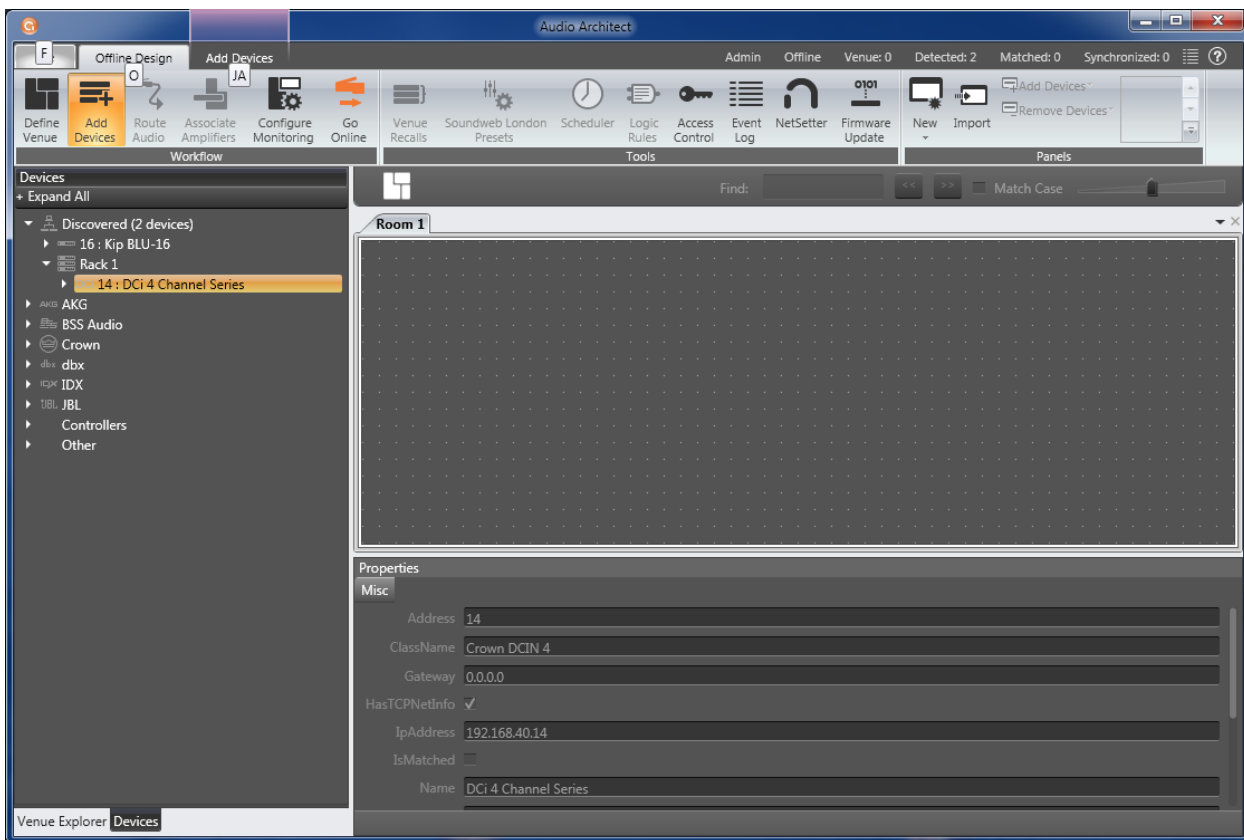


- Once you have your IP, Subnet and HiQnet ID assigned, make sure you select one of the two buttons circled in RED above. This will apply your edits made to the amplifier.
- You have two Apply options; 1) Apply Current Edits will apply the changes made to your amplifier or amplifiers but NetSetter remains open. 2) Apply and Exit is pretty much as it states, if you are done with your changes and the amplifier is discovered you can click this to Apply and Exit from NetSetter.

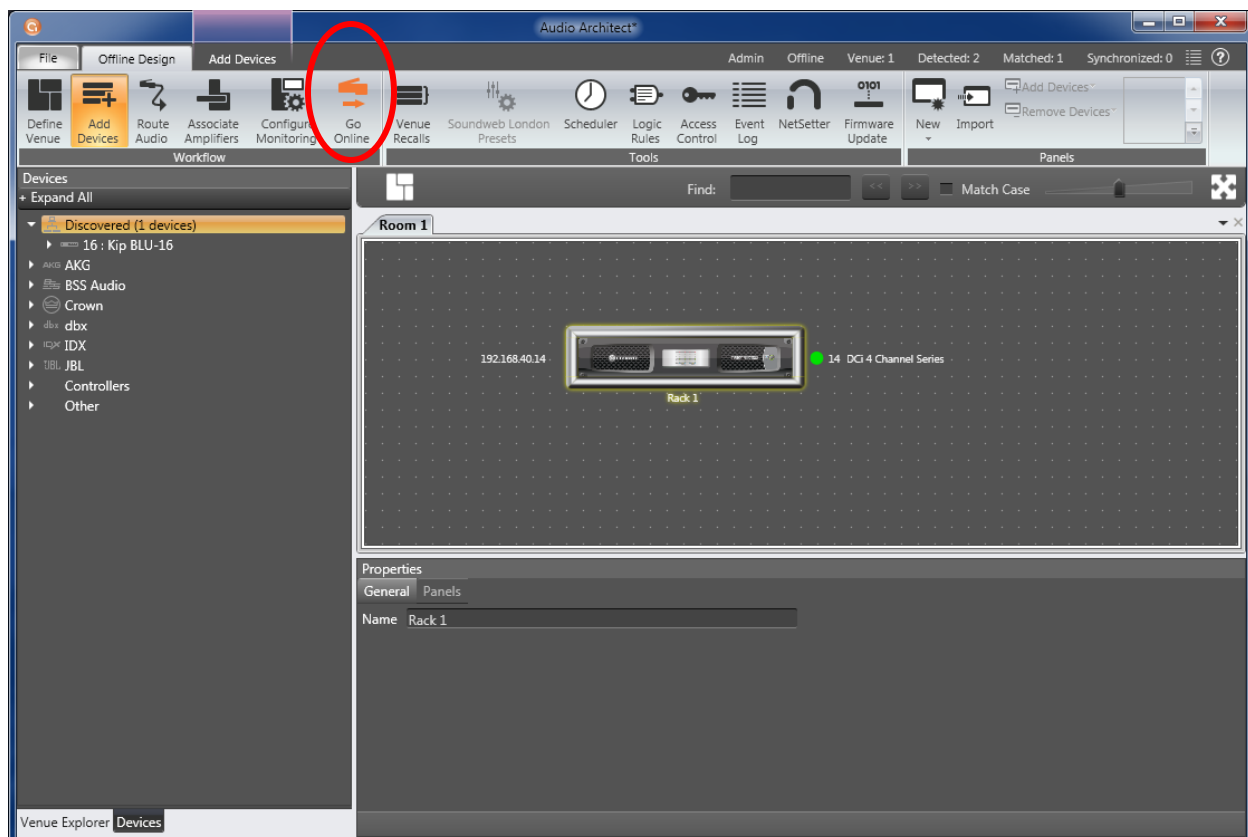
Step 5: With the above steps established, in the main window of Audio Architect you should have a line item named Discovered with a count of how many devices have been discovered shown by the red arrow below.




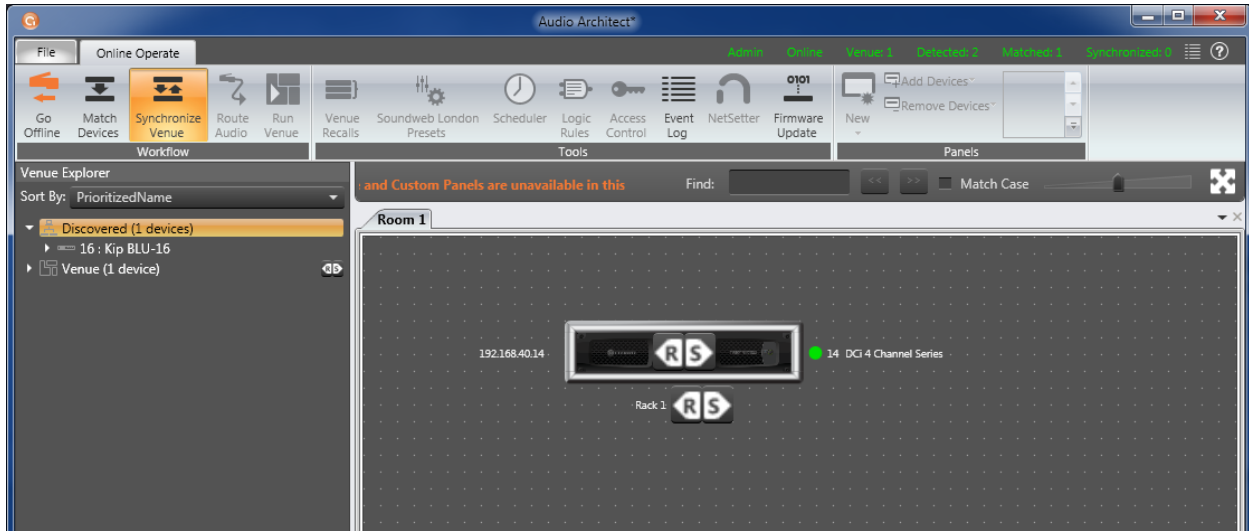
Step 6: Click the small arrow next to Discovered to expand as shown below.



Step 7: With your mouse click and drag the amplifier found over to the Room 1 Tab as shown below. Then click the Go Online button circled in RED.



Step 8: Once you click Go Online you will see an  on or below your amplifier in the Room 1 Tab.



- The R stands for Receive which means Audio Architect will Receive a file from the device or amplifier.
- The S stands for Send which means you are sending a file from Audio Architect to the device or amplifier.

Step 9: For this example, click the R and your amplifier is now fully Online which you can now double click on and make any adjusts as needed.

Summary: This method is just a basic or quick way to get your amplifier Online without going through all the configuration steps one can do if designing a larger venue. So if you have an amplifier or two and you need to just get Online to set up some DSP process, this method will let you bypass all those steps and go right in to program. **Note: The DCi amplifier used in this example has a GPIO Port, you CANNOT set up the GPIO port in Online mode. You will have to do that set up prior to going Online.**