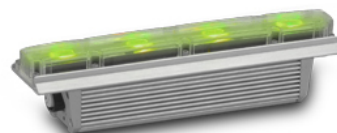
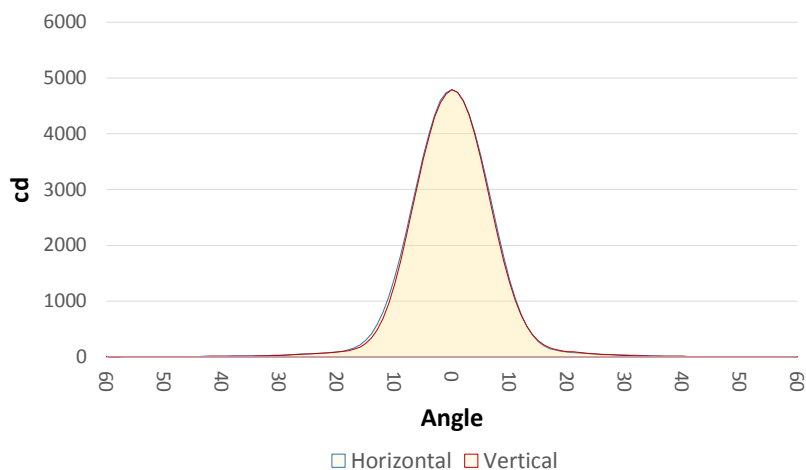


### General Specifications:

Typical Max. Fixture Output:	515 lm
Typical Max. Peak:	5649 cd
Typical Max. Efficacy:	34 lumen/watt
Beam Configuration:	Narrow
CRI:	73+
Color Temperature:	Variable



### Measurement

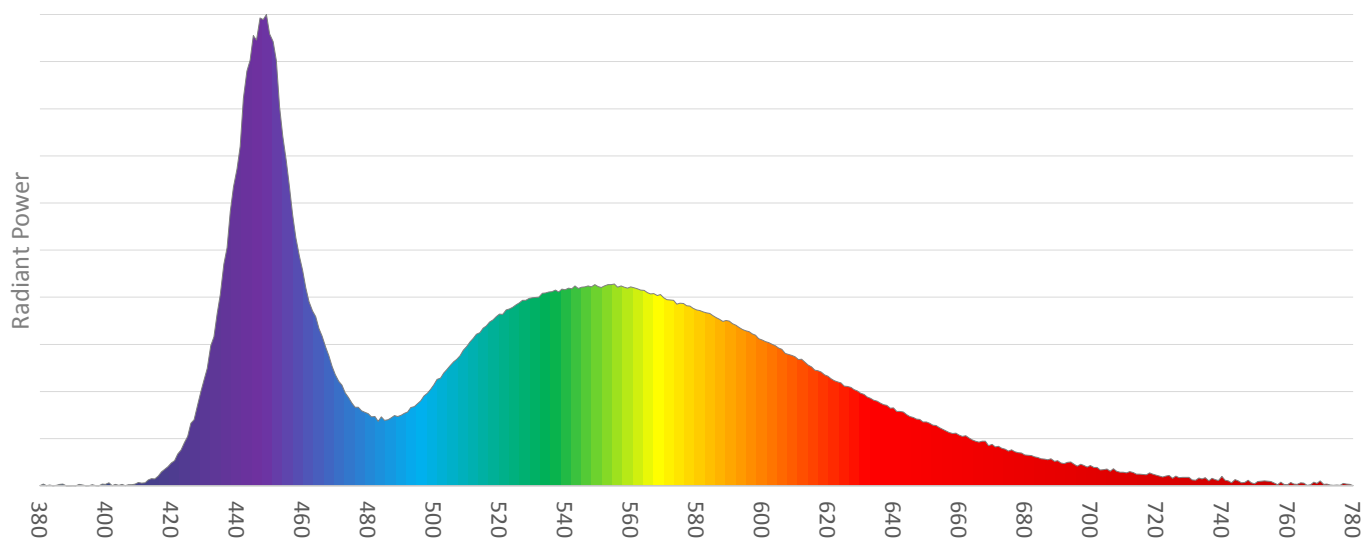


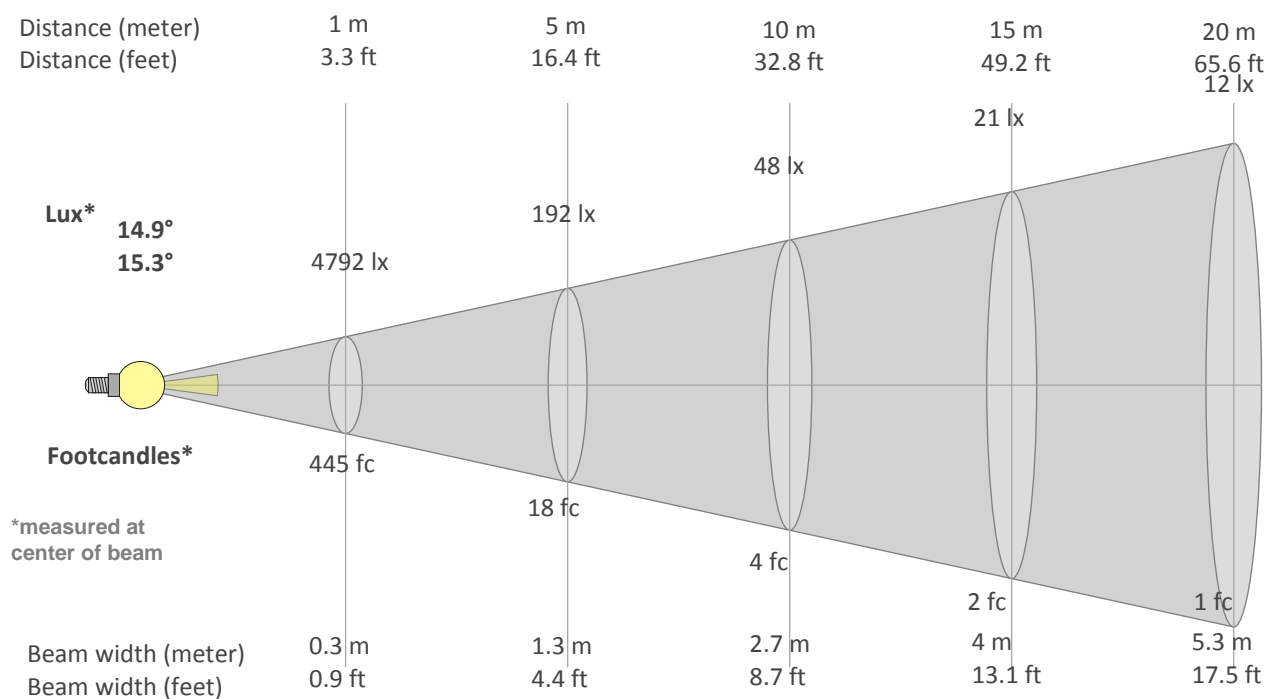
Catalog Number:	90356990
Measured Output:	466 lm
Measured Peak:	4798 cd
Consumed Power:	13.8 W
Efficacy:	33.8 lm/watt

Beam Angle (50%):	14.9°/15.3°
Field Angle (10%):	26.5°/27°
Cutoff Angle (3%):	36.1°/36.3°

Measurement Condition:	
Ambient Temperature:	25 +/- 5 °C
AC Supply:	230V/50Hz

### Spectral distribution





### Calculation of beam diameter and luminous intensity

Half-peak diameter = 0.3 x distance

Illuminance = 4792 / (distance<sup>2</sup>)

*distance in [m] for illuminance in [lux]*

*distance in [ft] for illuminance in [fc]*

Measurements are performed according to CIE S:025 / EN13032-4.