

Photometric Report

ERA 800 – Medium

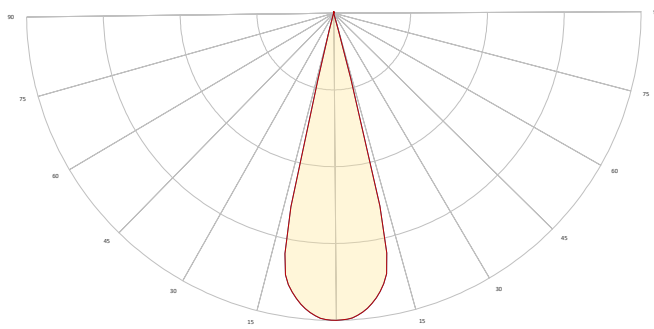
MARTIN PROFESSIONAL R&D OPTICAL LABORATORY

GENERAL SPECIFICATIONS

Total Fixture Output:	35000 lm
Light Engine Output:	70 klm
Efficacy:	64 Lumen/Watt
Lens Option:	N/A
Zoomrange:	6-49°
CRI:	70
CQS:	67
TM-30 Rf:	65
TM-30 Rg:	93
TLCI:	44
Color Temperature:	6900 K



MEASUREMENT



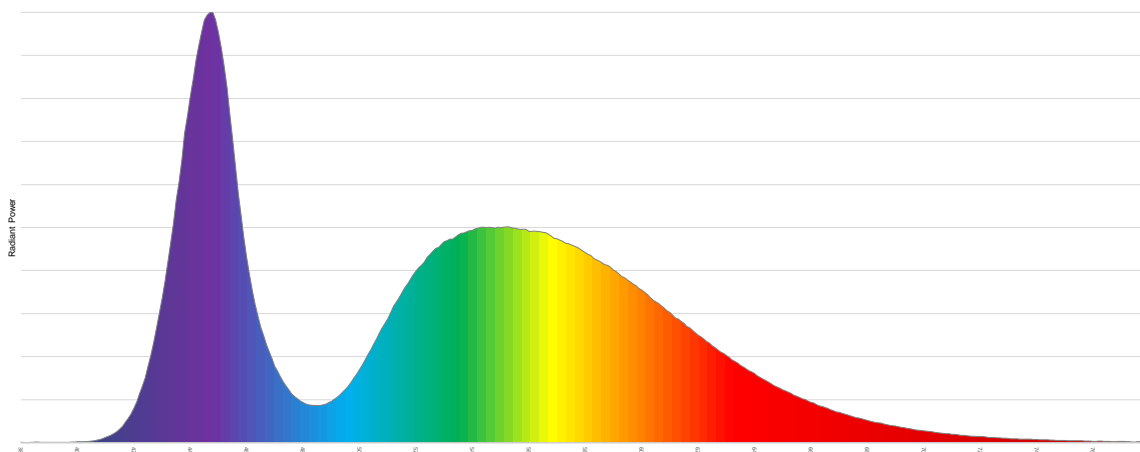
- Vertical - Horizontal

Catalog Number:	9025122052
Measured Output:	34670 lm
Measured Peak:	203312 cd
Consumed Power:	1161.5 W
Efficacy:	65.2 Lm/Watt

Beam Angle (50%):	26.7°
Field Angle (10%):	29°
Cutoff Angle (3%):	30.8°

Measurement Condition:	
Ambient Temperature:	25° +/- 5° C
AC Supply:	230V/50Hz

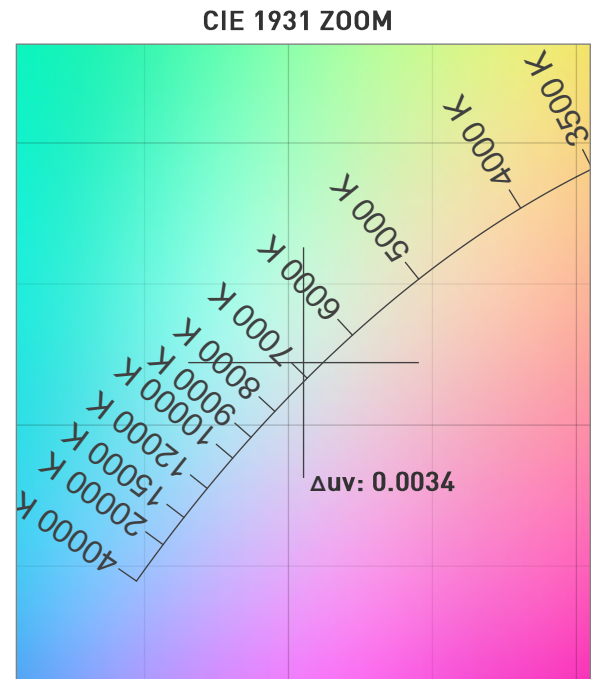
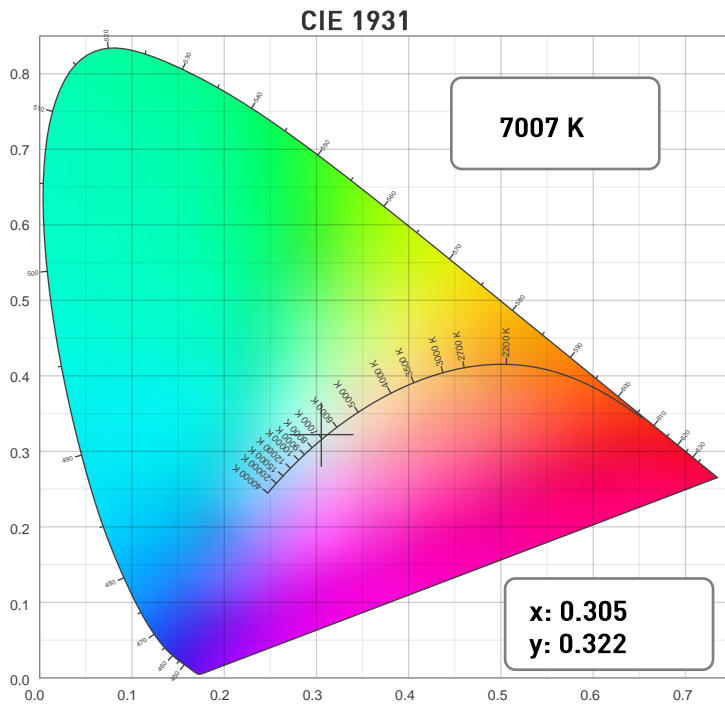
SPECTRAL DISTRIBUTION



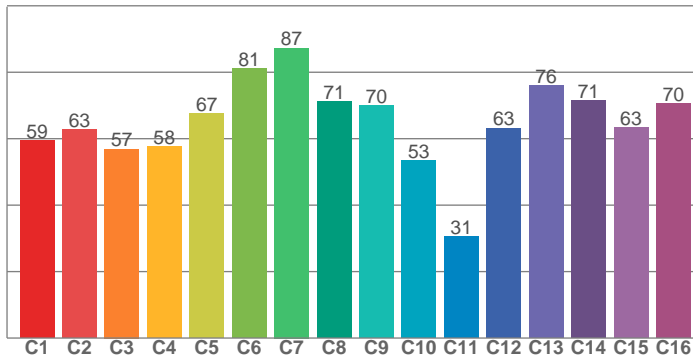
Photometric Report

ERA 800 – Medium

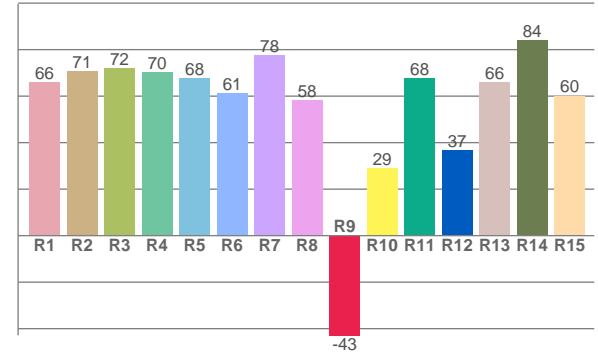
CHROMATICITY



TM30: 64.9



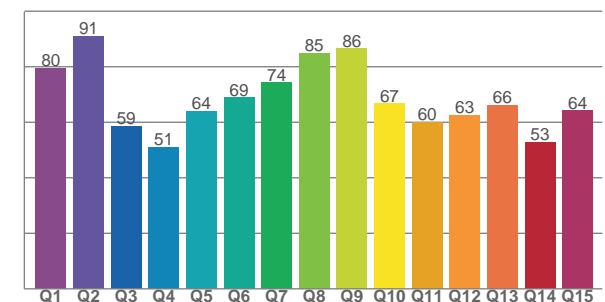
CRI: 68.0 (R1-R8)



COLOR PARAMETERS

Color Temperature	Color Rendering Index	Red Component	Color Fidelity	Color Gamut
CCT	CRI	CRI R9	TM30 Rf	TM30 Rg
7007 K	68.0	-42.9	64.9	92.6

CQS: 66.6



Television Lighting Consistency Index	Color Quality Scale	Color Coordinate CIE 1931	Color Coordinate CIE 1931	Color Coordinate CIE 1964	Color Coordinate CIE 1964	Color Deviation from Black Body
TLCI	CQS	x	y	u	v	Δuv
44	66.6	0.305	0.322	0.195	0.309	0.0034

Photometric Report

ERA 800 – Medium

TM30

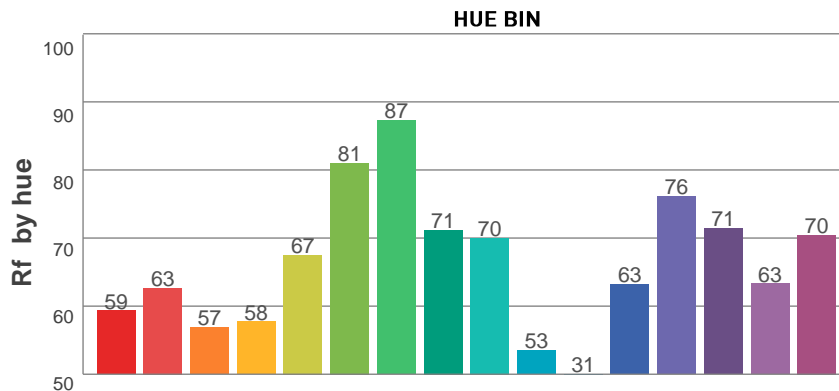
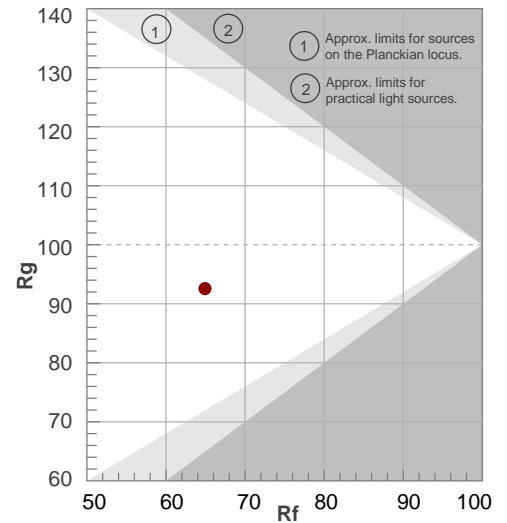
Rf 64.9

Fidelity index Rf

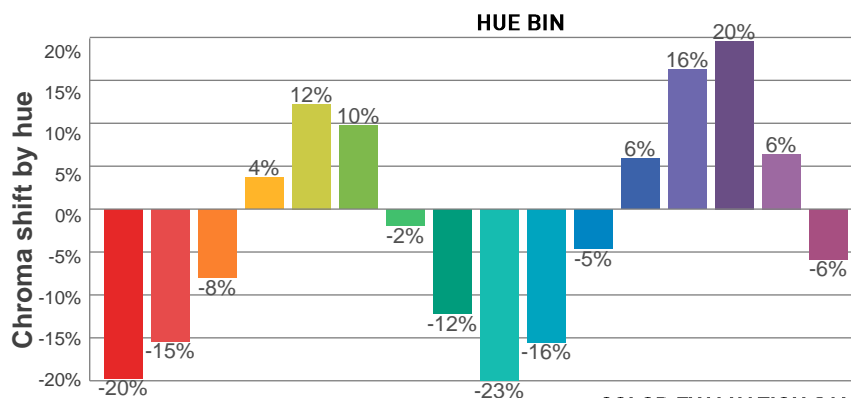
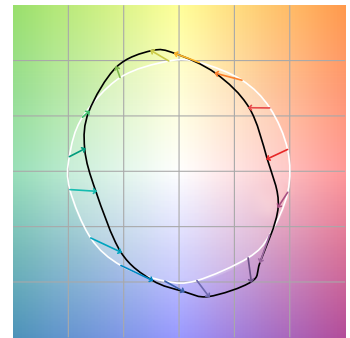
Rg 92.6

Gamut index Rg

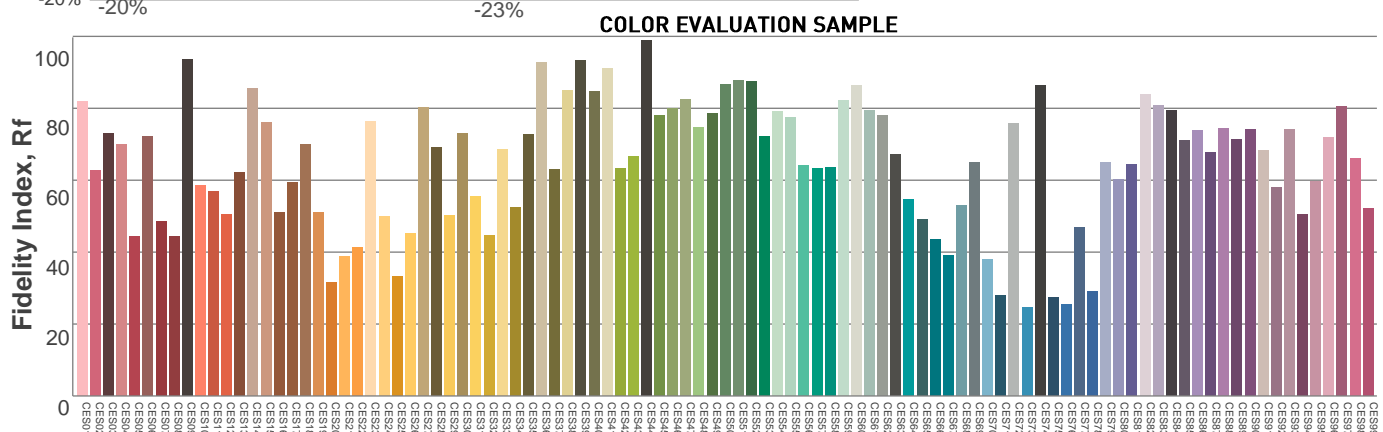
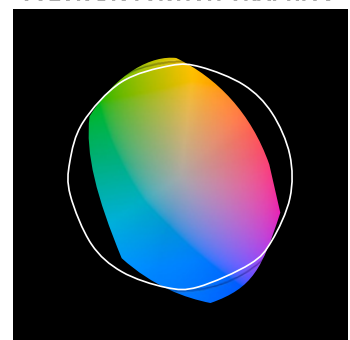
Hue Bin	R _f	Graphic shifts (%)	
		Chroma	Hue
1	59	-20%	-5%
2	63	-15%	11%
3	57	-8%	23%
4	58	4%	23%
5	67	12%	14%
6	81	10%	-2%
7	87	-2%	-8%
8	71	-12%	-10%
9	70	-23%	6%
10	53	-16%	26%
11	31	-5%	31%
12	63	6%	18%
13	76	16%	8%
14	71	20%	-10%
15	63	6%	-25%
16	70	-6%	-15%



COLOR VECTOR GRAPHICS



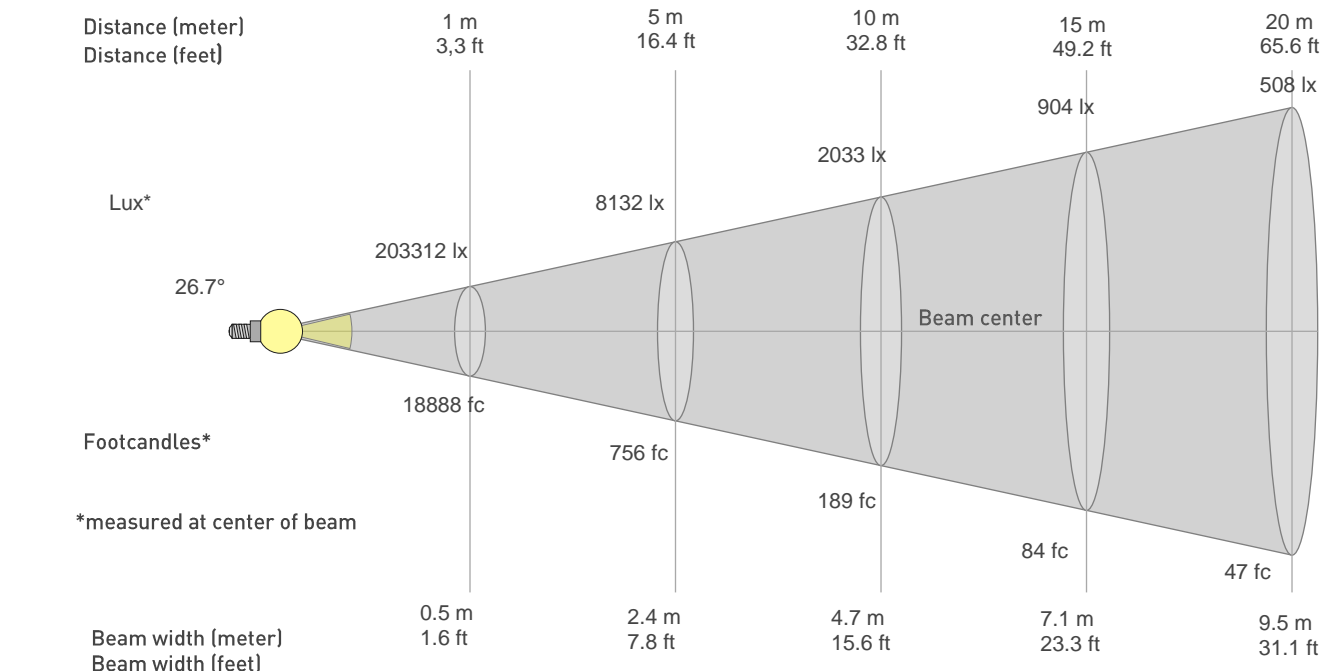
COLOR DISTORTION GRAPHICS



Photometric Report

ERA 800 – Medium

BEAM DETAILS

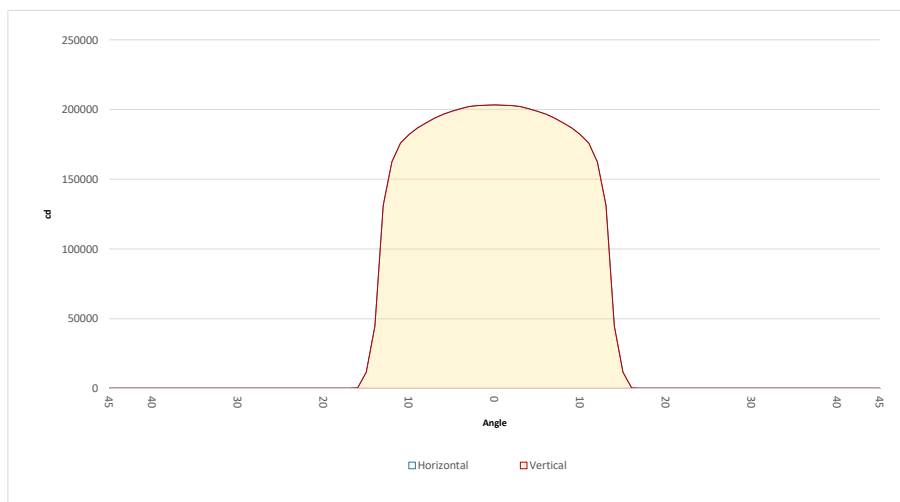


Beam width: = 0.5 * distance
Illuminance: = 203312 / (distance²)

distance in [m] for illuminance in [lux] distance in [ft] for illuminance in [fc]

BEAM ILLUMINANCE FROM 1-20M

1m	2m	3m	4m	5m	6m	7m	8m	9m	10m	11m	12m	13m	14m	15m	16m	17m	18m	19m	20m
3.3ft	6.6ft	9.8ft	13.1ft	16.4ft	19.7ft	23ft	26.2ft	29.5ft	32.8ft	36.1ft	39.4ft	42.7ft	45.9ft	49.2ft	52.5ft	55.8ft	59.1ft	62.3ft	65.6ft
203312lx	50828lx	22590lx	12707lx	8132lx	5648lx	4149lx	3177lx	2510lx	2033lx	1680lx	1412lx	1203lx	1037lx	904lx	794lx	704lx	628lx	563lx	508lx
18888.3fc	4722.1fc	2098.7fc	1180.5fc	755.5fc	524.7fc	385.5fc	295.1fc	233.2fc	188.9fc	156.1fc	131.2fc	111.8fc	96.4fc	83.9fc	73.8fc	65.4fc	58.3fc	52.3fc	47.2fc



BEAM ANGLE 50%	FIELD ANGLE 10%	CUTOFF ANGLE 3%
26.7°	29°	30.8°