

Alien 02 J-Box

installation note

The Alien 02 J-Box is used to mount an Alien 02 Pendant luminaire to a ceiling.

Note that all the measurements in the diagrams are expressed in millimeters (mm).

Refer to the *Alien 02 Pendant* user manual for safety information.

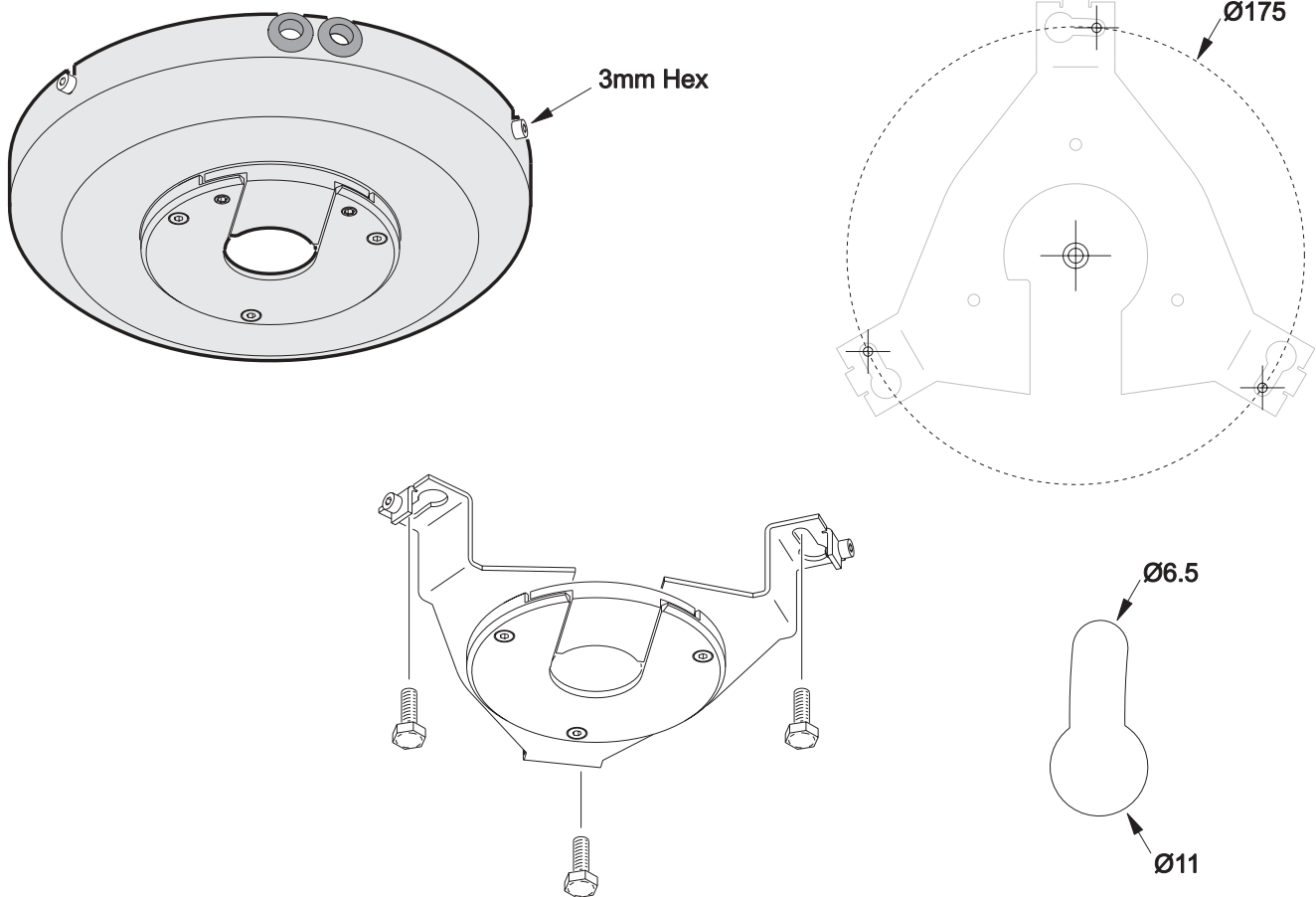
Pre-requisites

To install the Alien 02 J-Box you will need the following items which are not supplied with the product:

- Three units of mounting hardware (between 6 mm and 11 mm) appropriate to the mounting surface and appropriate to the 5.6 kg (13 lbs) combined weight of the J-Box and the Alien 02 Pendant
- Associated tools to install the mounting hardware
- A 3 mm Allen/Hex wrench.

Installation

- 1 Remove the J-Box cover by loosening the 3 Allen screws on its rim.



- 2 Affix the J-Box to an appropriate surface using the mounting hardware (6 mm to 11 mm). On the back of this instruction note is an actual size template that can be used to mark mounting hardware positions.
- 3 Attach the Alien 02 Pendant using the instructions in the *Alien 02 Pendant user manual*, or simply replace the J-Box cover if this step is to be performed at a later time.

Martin

P/N 35000555A

1:1

Ø175

