

# DOWNLOADING PRE-PROGRAMMED SHOWS INTO THE 2510 FOR THE MANIA SERIES LIGHTS



## \*\*\*\*\*CHAPTER 1 – Installing the Software\*\*\*\*\*

Open your Internet Browser and go to  
<http://martinpro.com/accessories/dandp3.asp>

Download and Play - Microsoft Internet Explorer presented by Comcast

File Edit View Favorites Tools Help

Back Forward Stop Home Search Favorites RSS Mail Print Address Bar

Address <http://martinpro.com/accessories/dandp3.asp> Go Links



ABOUT US EMPLOYEE PROFILE CONTACT US HOW TO FIND US SEARCH

# Martin

NEWS  
REFERENCES  
TRAINING  
PRODUCTS  
DEALERS  
DOWNLOAD AREA  
SUPPORT  
JOBS  
MARTIN ARCHITECTURAL  
SUBMIT A CASE STORY  
SUBSCRIBE

Pre-programmed Mania shows for the 2510 controller.

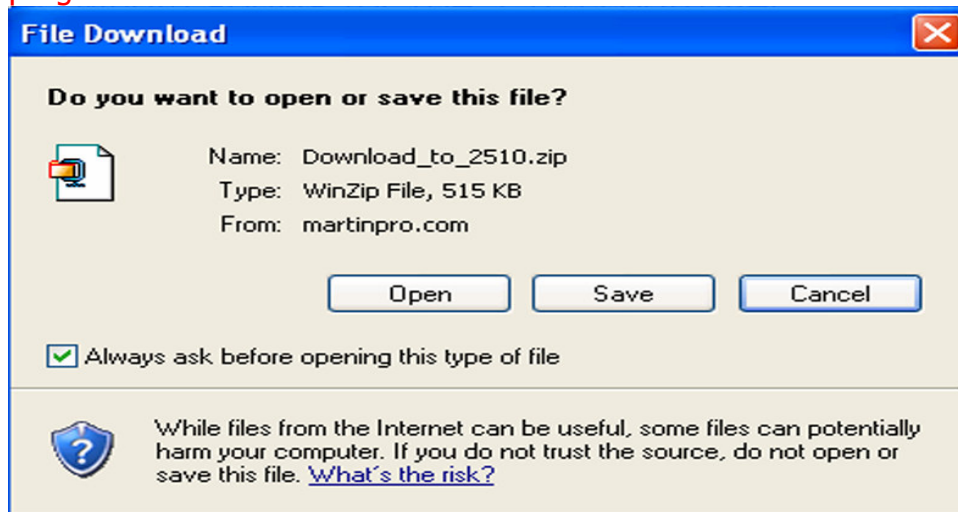
For each product there will be at least 4 different shows, each with hundreds of sequences. Shows can be downloaded using a new stand-alone download feature for the 2510 controller. We have created shows with slow, medium and fast movement, covering a wide range of atmospheres, moods and music styles.

	2510 SHOW FILES	INFO	LIGHTJOCKEY SHOW FILES	LAYOUT AND NOTES
Software	Download_to_2510.zip (516KB).	Info		
	MegaParty (31 KB)	Info		
	Funky Electronica (32 KB)	Info		
	Giga (43 KB)	Info		
	Universal (18 KB)	Info		PDF (14KB)
	Party (19 KB)	Info		
	Funky (19 KB)	Info		
	Electronica (19 KB)	Info		
	Funky Electronica (39 KB)	Info		
	Giga (55 KB)	Info		
	Mega Party (40 KB)	Info		
	Party (23 KB)	Info	Download (70 KB)	PDF (16 KB)
	Electronica (23 KB)	Info		
	Funky (22 KB)	Info		
	Universal (22 KB)	Info		

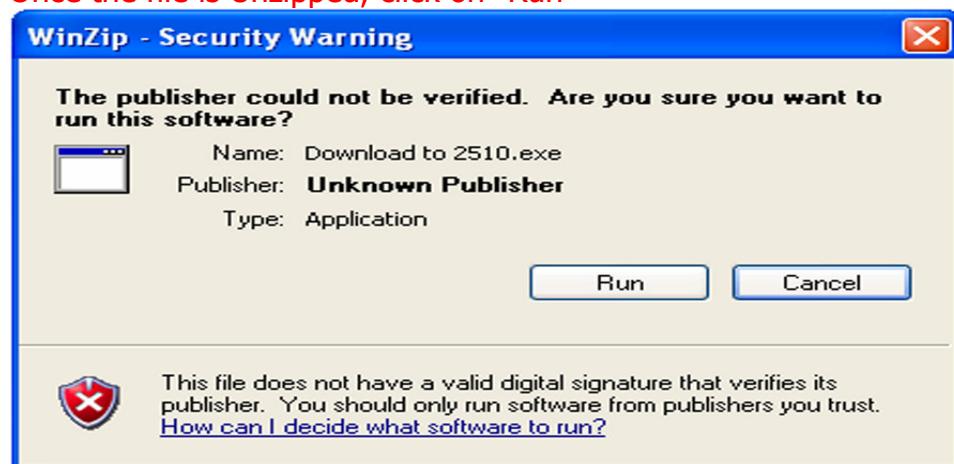
Click on "Download\_to\_2510.zip"

	2510 SHOW FILES	INFO	LIGHTJOCKEY SHOW FILES	LAYOUT AND NOTES
Software	Download_to_2510.zip (516KB).	Info		

Click on "Open" and then Unzip the downloaded file using WinZip or a similar program



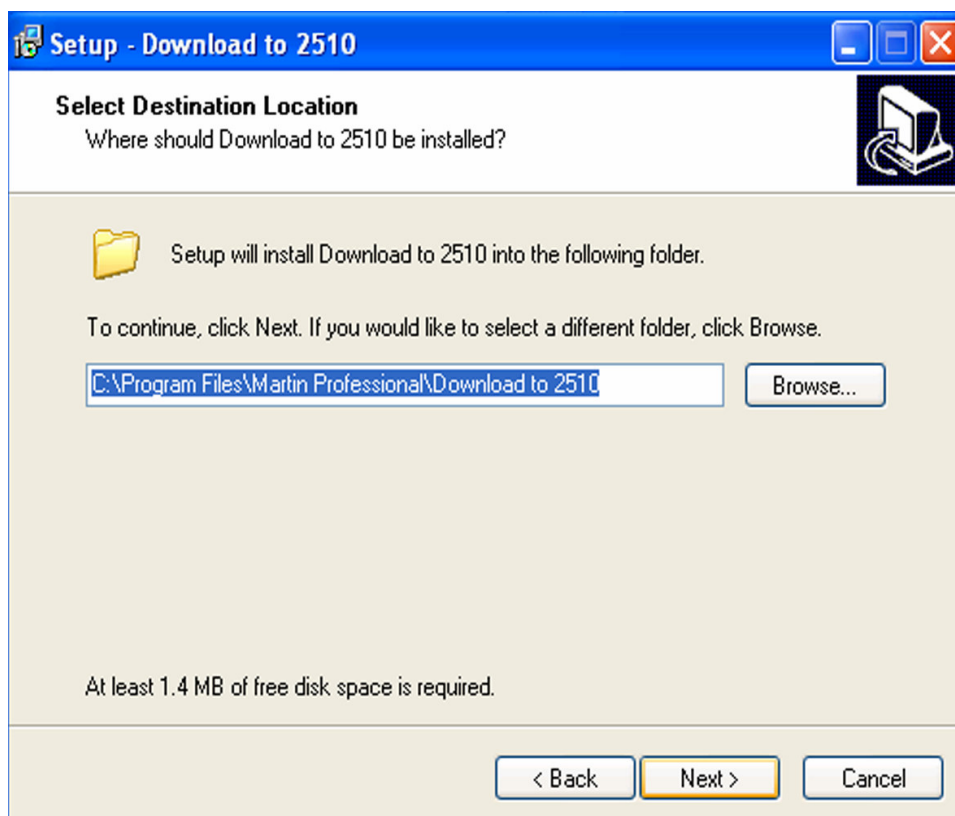
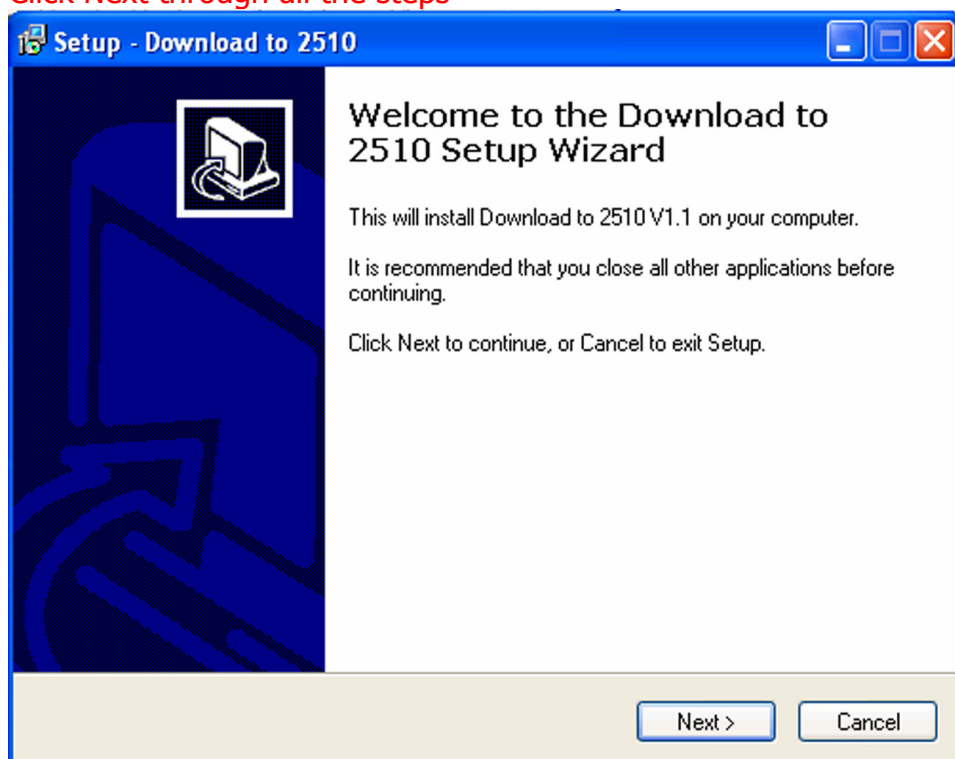
Once the file is Unzipped, click on "Run"

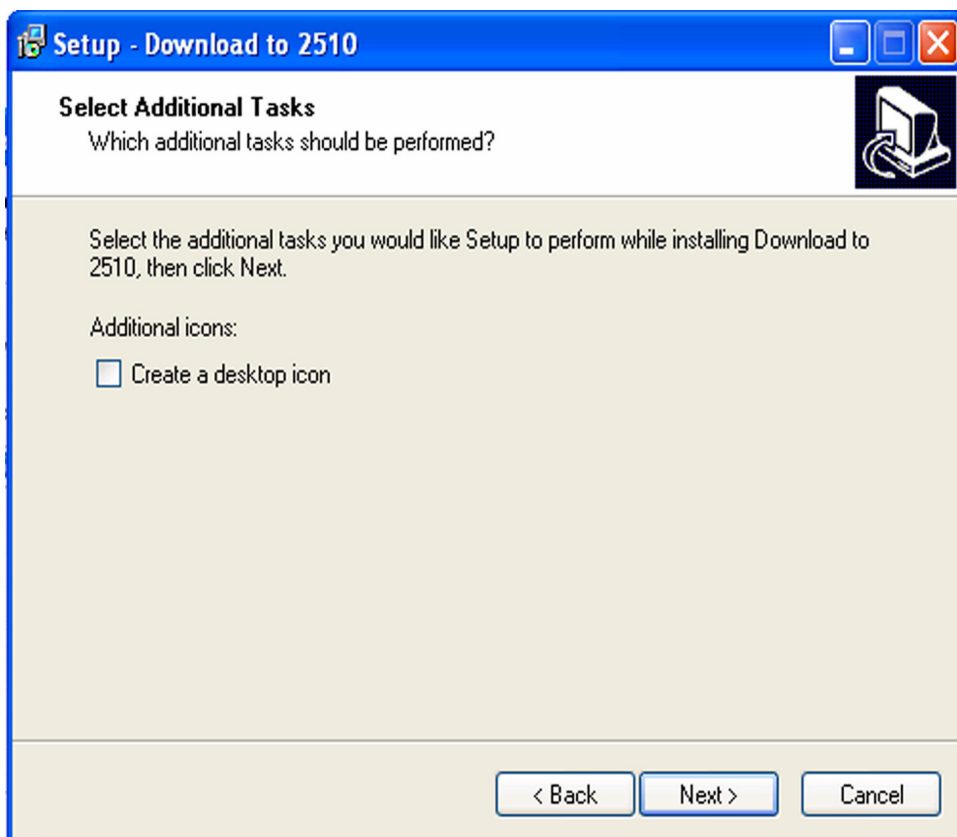
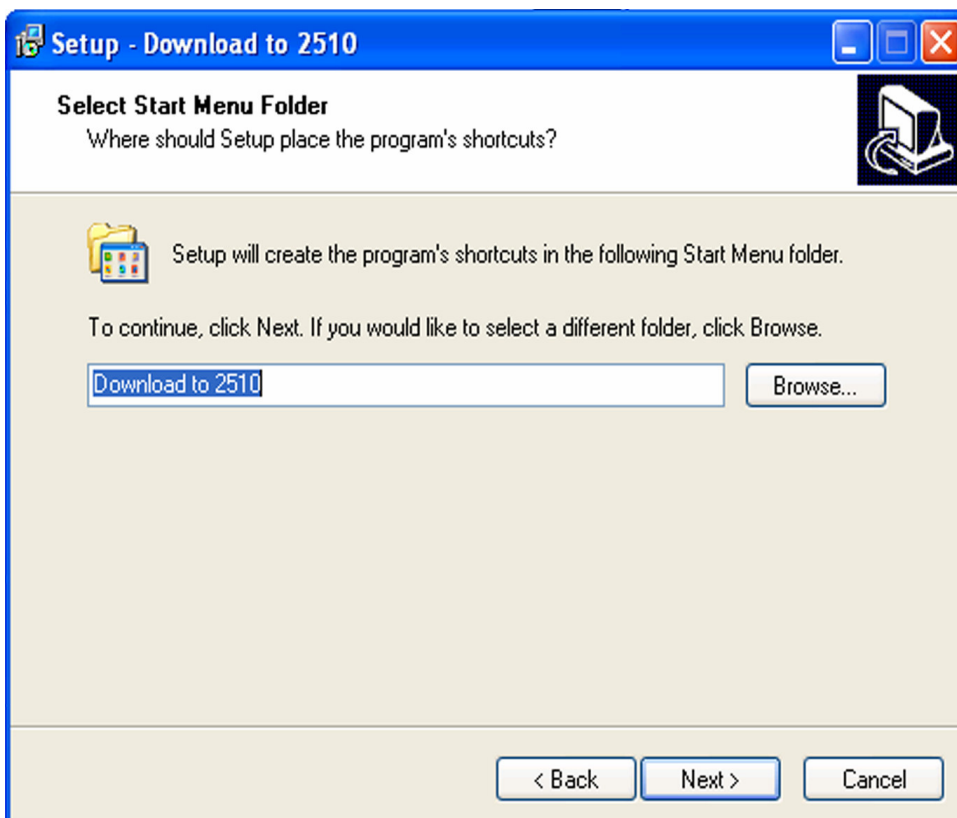


The same window may appear twice. If so, simply click on "Run" again

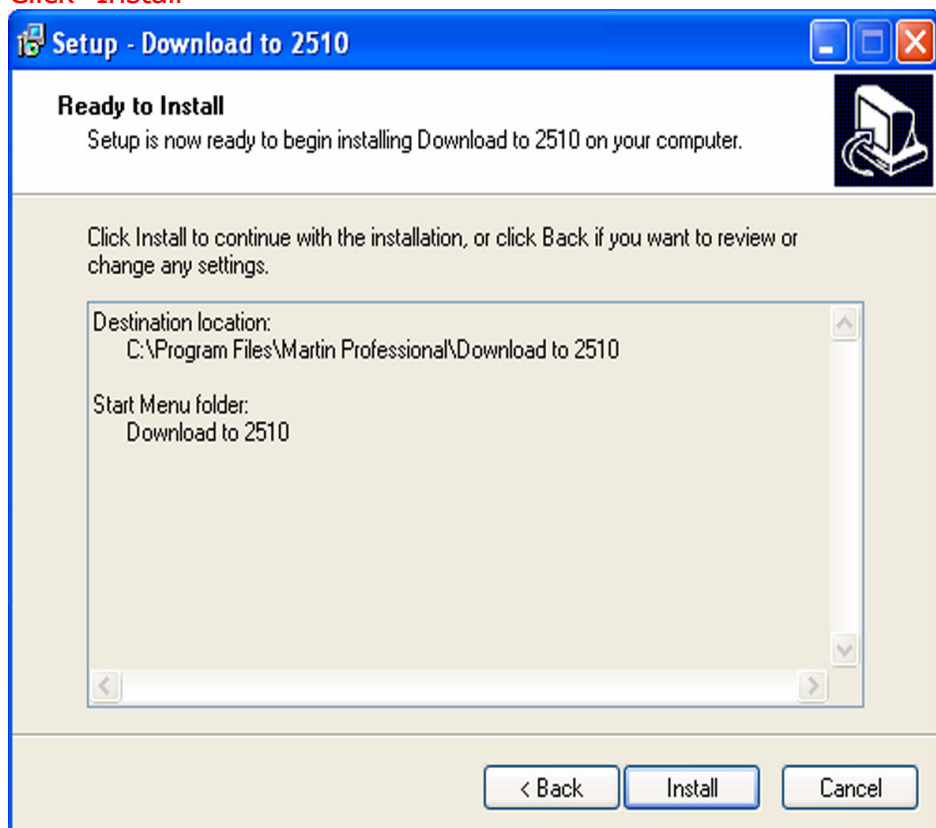


Click Next through all the steps

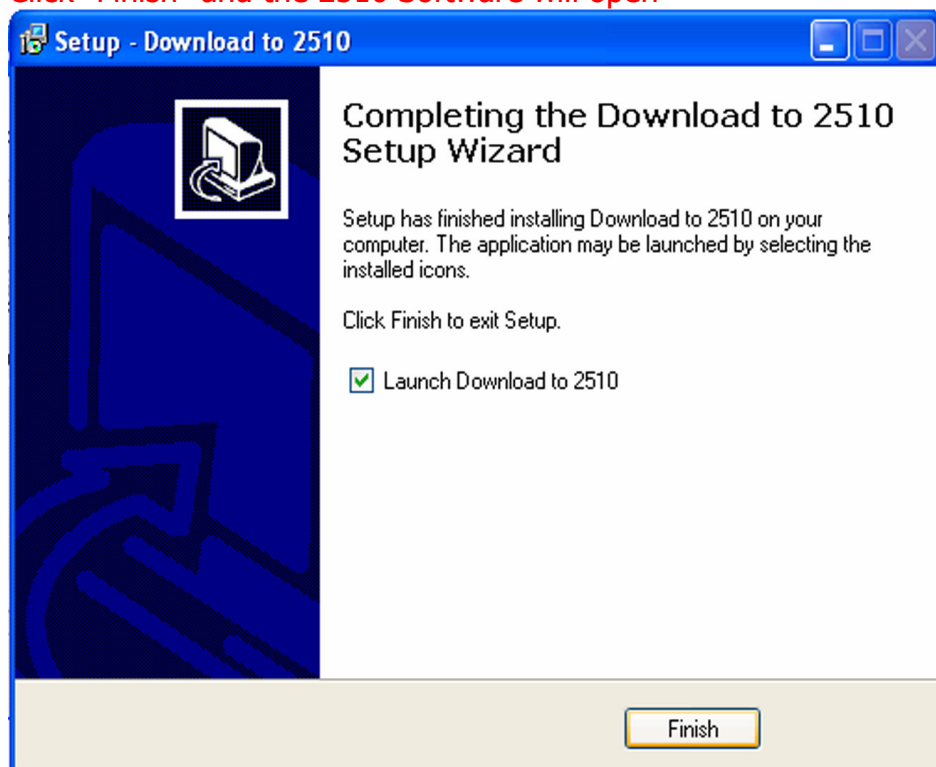




Click "Install"



Click "Finish" and the 2510 Software will open



## \*\*\*\*\*CHAPTER 2 – Downloading The Shows\*\*\*\*\*

Return to the original website that we linked to earlier

<http://martinpro.com/accessories/dandp3.asp>

Locate the section containing the lighting fixture that will be used. The example shown in this demonstration will be the Mania SCX500.

Choose the show that you would like to download.

i.e. "Mega Party".

Click on the actual name of the show.

Download and Play - Microsoft Internet Explorer presented by Comcast

File Edit View Favorites Tools Help

Back Forward Stop Home Search Favorites Refresh Print Mail News RSS Feeds

Address <http://martinpro.com/accessories/dandp3.asp> Go Links



ABOUT US EMPLOYEE PROFILE CONTACT US HOW TO FIND US SEARCH

# Martin

- NEWS
- REFERENCES
- TRAINING
- PRODUCTS
- DEALERS
- DOWNLOAD AREA
- SUPPORT
- JOBS
- MARTIN ARCHITECTURAL
- SUBMIT A CASE STORY
- SUBSCRIBE

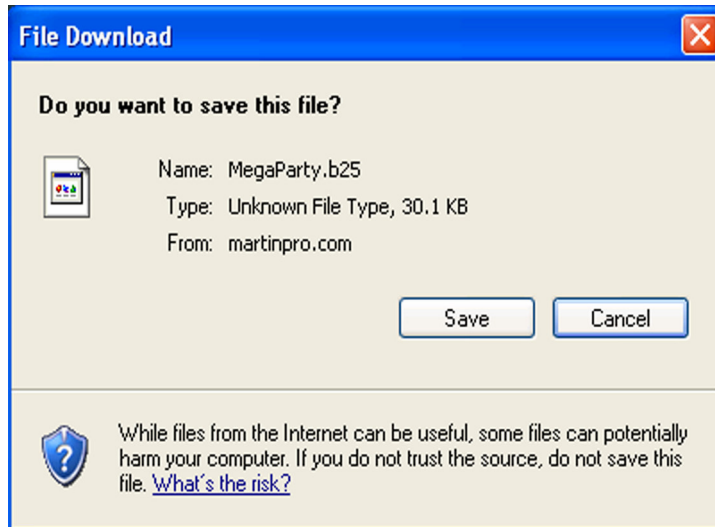
Pre-programmed Mania shows for the 2510 controller.

For each product there will be at least 4 different shows, each with hundreds of sequences. Shows can be downloaded using a new stand-alone download feature for the 2510 controller. We have created shows with slow, medium and fast movement, covering a wide range of atmospheres, moods and music styles.

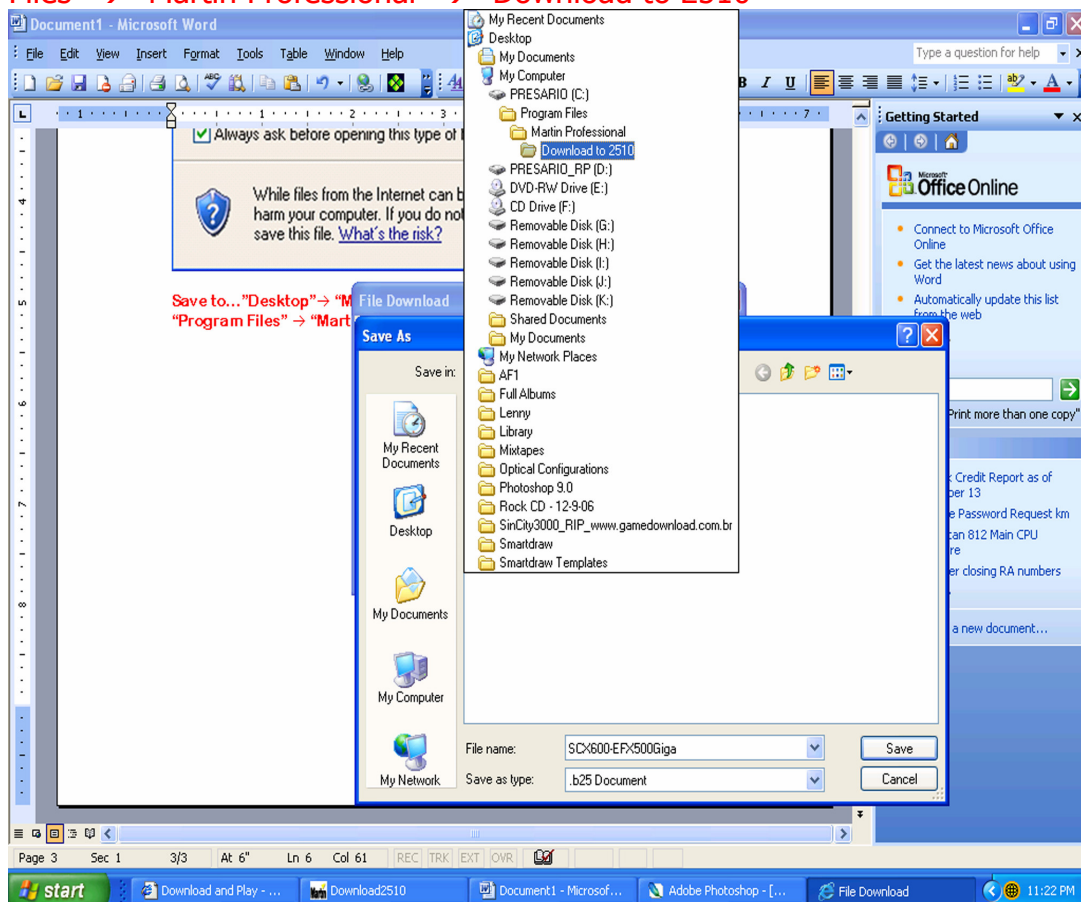
	2510 SHOW FILES	INFO	LIGHTJOCKEY SHOW FILES	LAYOUT AND NOTES
<b>Software</b>	Download_to_2510.zip (516KB)	Info		
 Mania SCX500	MegaParty (31 KB)	Info		
	Funky Electronica (32 KB)	Info		
	Giga (43 KB)	Info		
	Universal (18 KB)	Info		PDF (14KB)
	Party (19 KB)	Info		
	Funky (19 KB)	Info		
 Mania SCX600	Electronica (19 KB)	Info		
	Funky Electronica (39 KB)	Info		
	Giga (55 KB)	Info		
	Mega Party (40 KB)	Info		
	Party (23 KB)	Info		
	Electronica (23 KB)	Info		
	Funky (22 KB)	Info	Download (70 KB)	PDF (16 KB)



Click "Save"



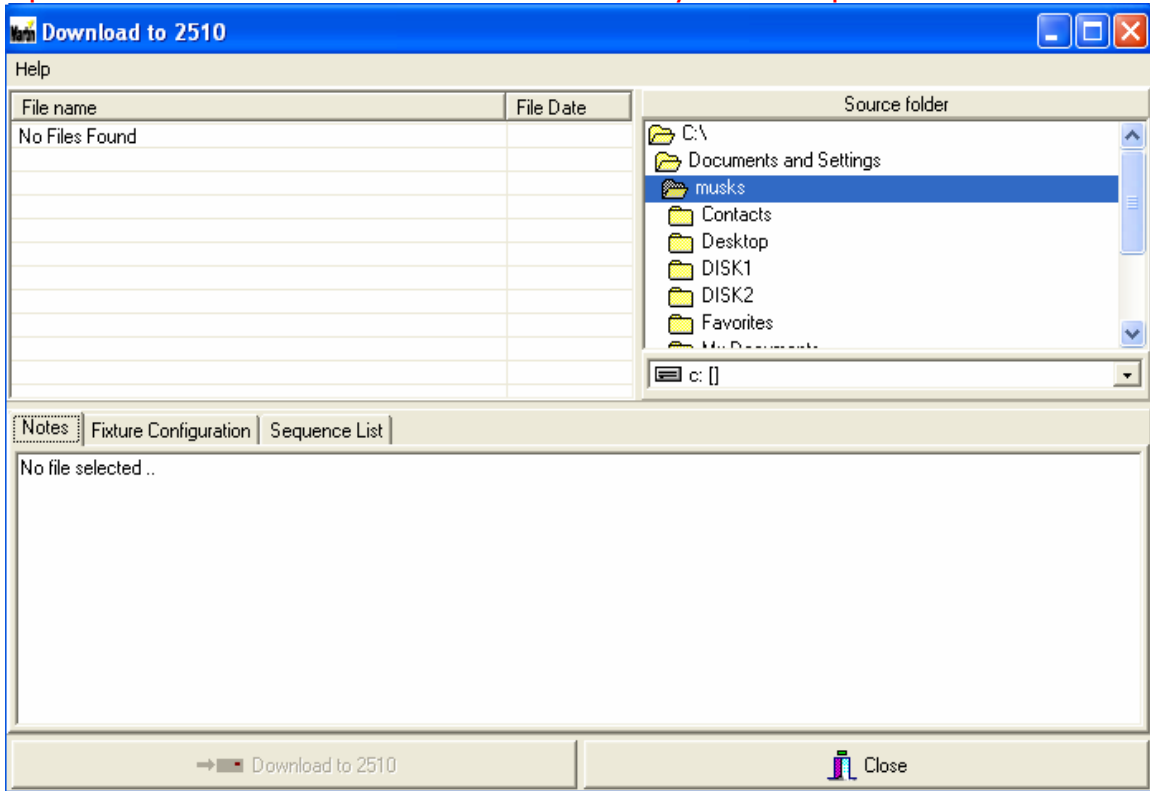
Save to... "Desktop" → "My Computer" → "Local C: (Hard Drive)" → "Program Files" → "Martin Professional" → "Download to 2510"





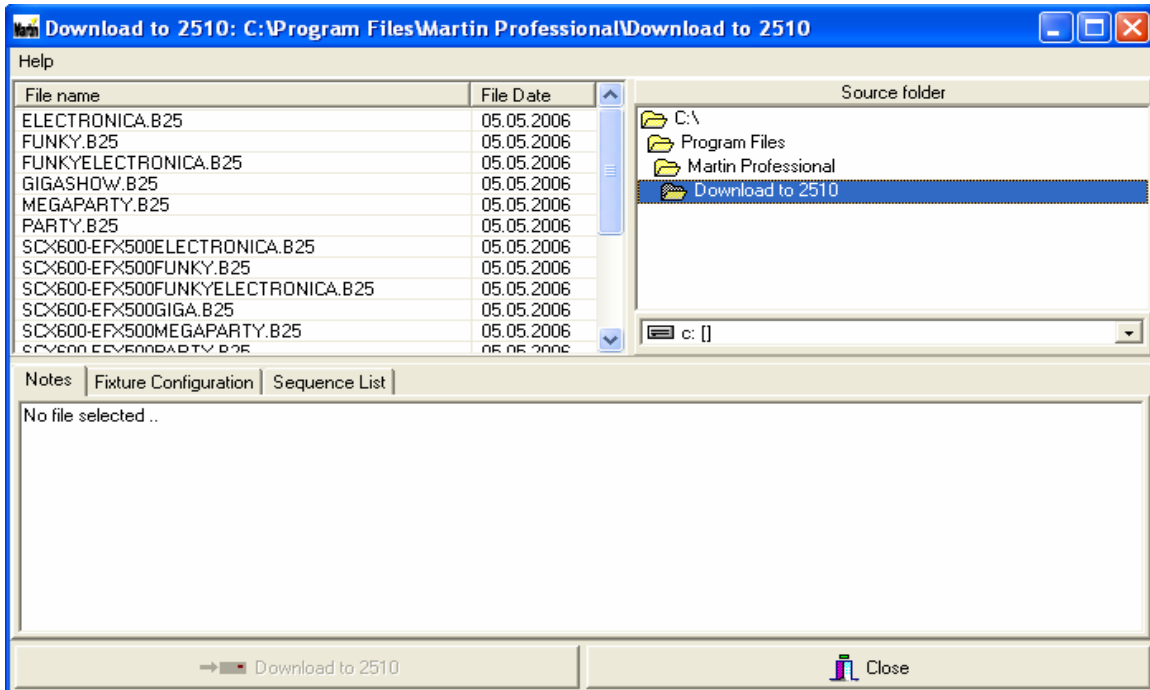
### \*\*\*\*\*CHAPTER 3 – Transferring Shows To The 2510\*\*\*\*\*

Connect the 2510 controller to your computer using a 9 Pin – 9 Pin serial cable.  
Open... the "Download to 2510" software from you Desktop or Start Menu.



In the upper right hand corner labeled "Source Folder", open... "Local C: (Hard Drive)" → "Program Files" → "Martin Professional" → "Download to 2510".

The show files will then appear in the upper left hand corner of the window

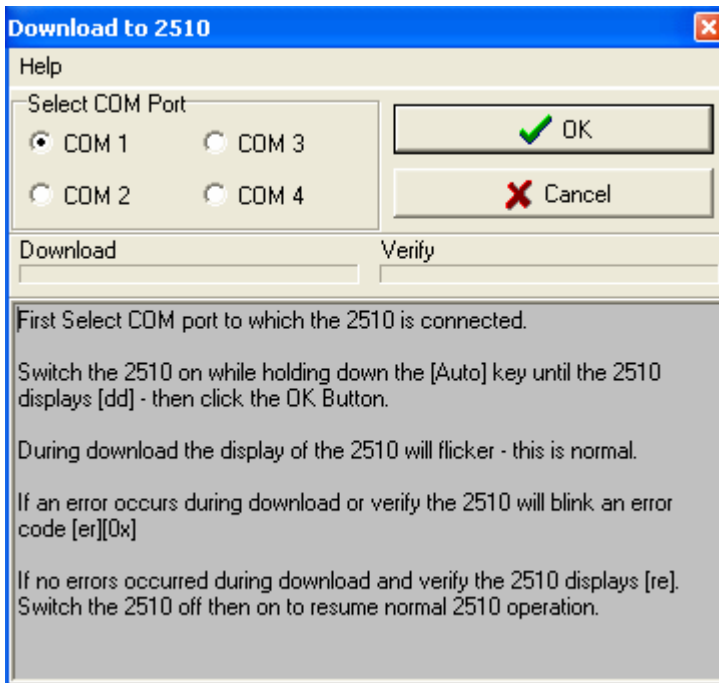


Select the show that you wish to transfer to the 2510 and then

click...

→ Download to 2510

Select the COM port that you are connected through and follow the instructions in the bottom half of the window.



## \*\*\*\*\*CHAPTER 4 – Addressing and Layout\*\*\*\*\*

Once you are ready to address the fixtures, return to the original website that we linked to earlier.

<http://martinpro.com/accessories/dandp3.asp>

Download and Play - Microsoft Internet Explorer presented by Comcast

File Edit View Favorites Tools Help

Back Forward Stop Home Search Favorites Refresh Print Mail Address Book Favorites

Address <http://martinpro.com/accessories/dandp3.asp> Go Links



ABOUT US EMPLOYEE PROFILE CONTACT US HOW TO FIND US SEARCH

# Martin

NEWS  
REFERENCES  
TRAINING  
PRODUCTS  
DEALERS  
DOWNLOAD AREA  
SUPPORT  
JOBS  
MARTIN ARCHITECTURAL  
SUBMIT A CASE STORY  
SUBSCRIBE

Pre-programmed Mania shows for the 2510 controller.

For each product there will be at least 4 different shows, each with hundreds of sequences. Shows can be downloaded using a new stand-alone download feature for the 2510 controller. We have created shows with slow, medium and fast movement, covering a wide range of atmospheres, moods and music styles.

	2510 SHOW FILES	INFO	LIGHTJOCKEY SHOW FILES	LAYOUT AND NOTES
Software	Download_to_2510.zip (516KB)	Info		
 Mania SCX500	MegaParty (31 KB)	Info		
	Funky Electronica (32 KB)	Info		
	Giga (43 KB)	Info		
	Universal (18 KB)	Info		PDF (14KB)
	Party (19 KB)	Info		
	Funky (19 KB)	Info		
	Electronica (19 KB)	Info		
 Mania SCX600	Funky Electronica (39 KB)	Info		
	Giga (55 KB)	Info		
	Mega Party (40 KB)	Info		
	Party (23 KB)	Info		
	Electronica (23 KB)	Info		
	Funky (22 KB)	Info		

Click on the "PDF" file next to the fixtures you are using. This will show you various layouts and addresses that may be used. All addresses are not required to be used when playing back the shows. Play around with the addresses and shows until you find the desired effect you are looking for.

## \*\*\*\*\*CHAPTER 5 – Show Playback\*\*\*\*\*

\*\*\*\*\*NOTE: You must use a phase reverse cable between your 2510 Controller and your Martin Lights\*\*\*\*\*

Once the 2510 is powered up, "SU" should flash on the display. It will now start running the show. If you would like to select which sequence is visible, press the "UP" arrow. You will now be able to select which look you want by pressing "Enter".

To select a sub-list of sequences, press and hold the "Enter" button until either... "-1", "-2", or "-3" is displayed. Select one of the 3 lists and press "Enter". The sublist will now start playing back.

For further assistance please download the user manuals off of our support website... <http://martin.com/service/service.asp>

Thank you for choosing Martin Products. If you have any trouble, please contact 1-888-TECH-180 for live assistance.