

FiberSource CMY150 Phase Compensation Capacitor Replacement Procedure

This document describes the procedure for replacing the phase compensation capacitor in FiberSource CMY150 fixtures.

The replacement capacitor is P/N 04030093, "20 μ F MFR-25 w. quick connect."

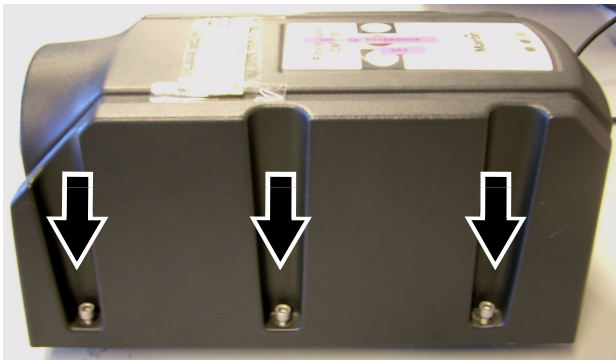
Safety information

Warning! Disconnect the fixture from power and allow to cool before servicing. Service must be carried out by qualified professional technicians only.

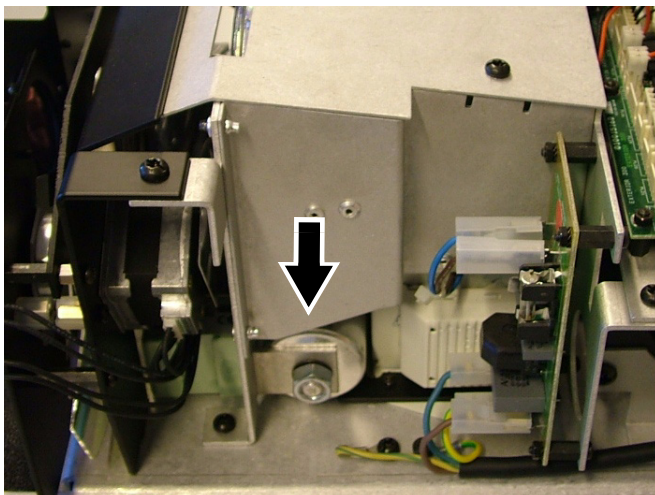
Replacement procedure

To replace the phase compensation capacitor:

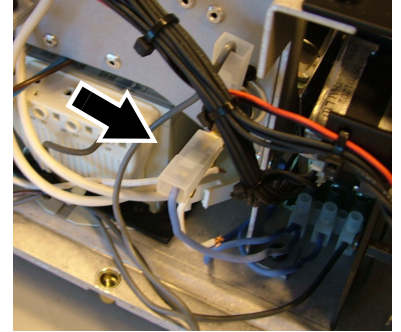
1. Disconnect the fixture from power and allow to cool.
2. Use a 5 mm Allen wrench to remove the six hex bolts (three on each side) that hold the cover in place and lift the cover off.



3. Use a wrench to remove the 13 mm capacitor retaining nut and lock washer.



4. Remove the thermostatic switch connector and pull out the capacitor.



5. Use a wire cutter to clip the wires as close to the capacitor as possible.
6. Strip about 5 mm (slightly less than 1/4 inch) of insulation from the ends of the two leads.



7. Press each end into a terminal on each side of the new capacitor to establish a circuit through the capacitor (the capacitor is not polarized).
8. Transfer the nut and lock washer from the old capacitor to the new capacitor, place the capacitor in the mounting bracket and use a wrench to tighten the retaining nut.
9. Reconnect the thermostatic switch connector.
10. Ensure that wires are clear of moving parts and secure them as necessary with strip ties. Check that wires are not under tension and are in perfect condition. Check that connections are secure.
11. Replace the cover and secure it using a 5 mm Allen wrench to tighten the six hex bolts.

