



The VC-Dot™ Mounting Clips enable easy installation of VC-Dots™ on a variety of surfaces. The Mounting Clips are screwed to the wall/ceiling/floor and the Dots are just “clipped in”.

CONSTRUCTION Material: Injected plastic
Color: Transparent

ENVIRONMENT Indoor usage only

WEIGHT VC-Dot 1 Mounting Clip: 2 g
VC-Dot 4 Mounting Clip: 5 g
VC-Dot 9 Mounting Clip: 8 g

RELATED ITEMS	VC-Dot 1™ RGB, 100 mm (3.9 in.) pitch, 100 pcs., 2 m (6.6 ft.) lead-in	P/N 90357060
	VC-Dot 1™ WW, 100 mm (3.9 in.) pitch, 100 pcs., 2 m (6.6 ft.) lead-in	P/N 90357090
	VC-Dot 1™ MW, 100 mm (3.9 in.) pitch, 100 pcs., 2 m (6.6 ft.) lead-in	P/N 90357080
	VC-Dot 1™ CW, 100 mm (3.9 in.) pitch, 100 pcs., 2 m (6.6 ft.) lead-in	P/N 90357070
	VC-Dot 4™ RGB, 200 mm (7.9 in.) pitch, 64 pcs., 2 m (6.6 ft.) lead-in	P/N 90357100
	VC-Dot 4™ WW, 200 mm (7.9 in.) pitch, 64 pcs., 2 m (6.6 ft.) lead-in	P/N 90357130
	VC-Dot 4™ MW, 200 mm (7.9 in.) pitch, 64 pcs., 2 m (6.6 ft.) lead-in	P/N 90357120
	VC-Dot 4™ CW, 200 mm (7.9 in.) pitch, 64 pcs., 2 m (6.6 ft.) lead-in	P/N 90357110
	VC-Dot 9™ RGB, 400 mm (15.7 in.) pitch, 36 pcs., 2 m (6.6 ft.) lead-in	P/N 90357140
	VC-Dot 9™ WW, 400 mm (15.7 in.) pitch, 36 pcs., 2 m (6.6 ft.) lead-in	P/N 90357050
	VC-Dot 9™ MW, 400 mm (15.7 in.) pitch, 36 pcs., 2 m (6.6 ft.) lead-in	P/N 90357160
	VC-Dot 9™ CW, 400 mm (15.7 in.) pitch, 36 pcs., 2 m (6.6 ft.) lead-in	P/N 90357150

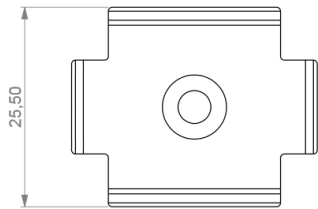
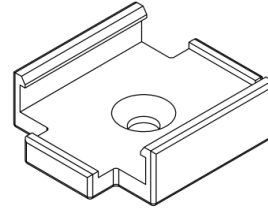
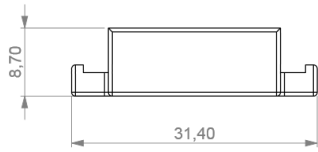
ORDERING INFORMATION	VC-Dot 1™ Mounting Clips, set of 10	P/N 90357210
	VC-Dot 4™ Mounting Clips, set of 10	P/N 90357220
	VC-Dot 9™ Mounting Clips, set of 10	P/N 90357170



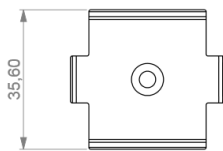
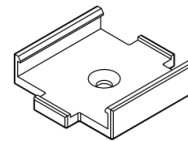
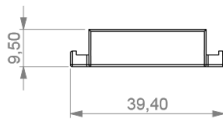
Specifications

VC-Dot™ Mounting Clips

VC-Dot 1™ Mounting Clip



VC-Dot 4™ Mounting Clip



Specifications

VC-Dot™ Mounting Clips

VC-Dot 9™ Mounting Clip

