

Overview

The MXA-FMK-43 Flush Mount Kit (FG5968-72) mounts the MXD-430 Modero X 4.3" Wall Mount Touch Panel flush with the wall. Once installed, simply press lightly on the touch panel and the spring-loaded mechanism extracts the panel just slightly for access to the side buttons and enhanced speaker exposure.

PRODUCT SPECIFICATIONS	
Dimensions (HWD):	5.68" x 4.21" x 3.25" (14.43 cm x 10.69 cm x 8.25 cm)
Weight:	0.55 lbs (0.25 kg)
Included Accessories:	<ul style="list-style-type: none"> • MXA-FMK-43 Cutout Template • MXA-FMK-43 Drilling Template • Mounting Screws (2) - #8-32 X 1.25", PPH, Black • Spacers (2) • Push-on Retainers (2) - #8, Nylon
Other AMX Equipment:	<ul style="list-style-type: none"> • CB-MXP-43-F Flush Mount Rough-In Box/Cover Plate (FG5968-82)

This document describes a standard wall installation of the MXA-FMK-43 Flush Mount Kit. For details on Installation Options for solid wall placement, refer to the *MXA-FMK-43 Solid Wall and Rough-In Box Installation Quick Start Guide*.

Installation of the Flush Mount Kit

The MXA-FMK-43 Flush Mount Kit ("FMK") is designed to attach the panel to most standard wall and solid surface materials. The FMK has two locking tabs (one on each side) to help lock the FMK to the wall.

- These locking tabs are only extended *AFTER* the Flush Mount Kit is inserted into the wall.
- Using the locking tabs is highly recommended for standard mounting surfaces such as walls.

WARNING: When installing the Flush Mount Kit, make sure that the assembly is in the correct position and in the correct place. Once the locking tabs are extended and locked into place, removing the Flush Mount Kit may be difficult without having access to the back of the wall or causing damage to the wall.

Note: In order to guarantee a stable installation of the MXA-FMK-43, the thickness of the wall material must be a minimum of .50 inches (1.27cm) and a maximum of .875 inches (2.22cm). The surface should also be smooth and flat.

1. After ensuring proper placement, cut out the mounting surface, using the MXA-FMK-43 Cutout Template (68-5968-08) as a guide (FIG. 1).

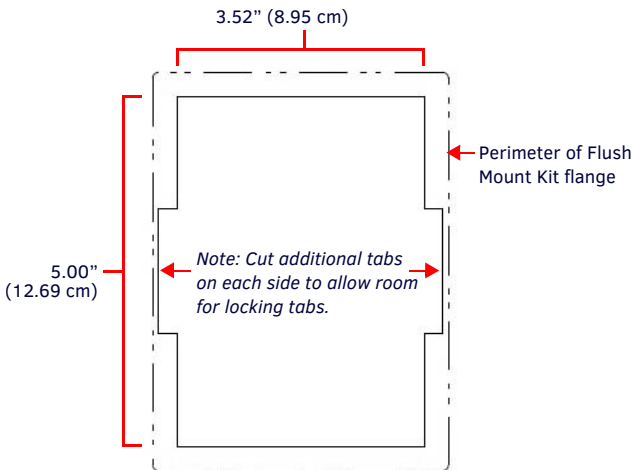


FIG. 1 MXA-FMK-43 CUTOUT TEMPLATE

CAUTION: The cutout dimensions shown will allow the unit to pass through without any dragging or interference. The outer (dotted) lines show the perimeter of the mounting flange. If any part of the cutout extends up to or beyond that perimeter, the cut edge will be visible after installation, or the unit could fall through the opening.

A larger cutout reduces the available surface to support the unit when mounted, so the cut should be as close to the indicated dimensions as possible. If the cutout is too small, forcing the unit into place could result in mechanical binding, faulty operation, or damage to the product. Always check for a proper fit before final installation.

2. Remove the knockout at the bottom right of the FMK, and thread the incoming wiring through the knockout hole (FIG. 2).

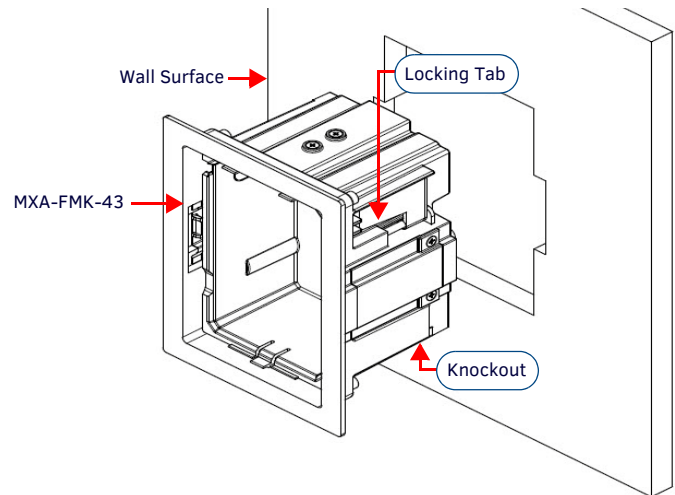


FIG. 2 INSERTING THE MXA-FMK-43 INTO THE WALL SURFACE

3. Thread the incoming Ethernet wiring through the surface opening and through the knockout.
4. Push the FMK flat into the mounting surface and secure with the locking tabs (FIG. 3).
5. In order to prevent damage to the touch panel, make sure that any screws used are flush with the FMK, and the FMK goes freely into the opening.

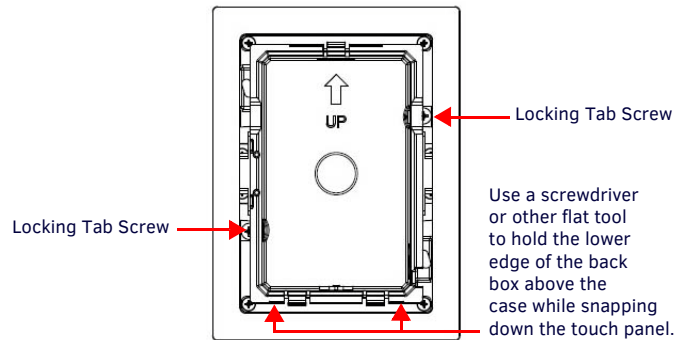


FIG. 3 LOCKING TAB LOCATION ON THE MXA-FMK-43

WARNING: The maximum recommended torque to screw in the locking tabs on the plastic Flush Mount Kit is 5 IN-LB [56 N-CM]. Applying excessive torque while tightening the tab screws, such as with powered screwdrivers, can strip out the locking tabs or damage the plastic.

6. Insert each connector into its corresponding port on the back of the touch panel. For more information, please refer to the *Modero X Series G4 Touch Panels Instruction Manual*.
7. Test the incoming wiring by attaching the panel connections to their terminal locations and applying power. Verify that the panel is receiving power and functioning properly to prevent repetition of the installation.

Note: Do not disconnect the connectors from the touch panel. The unit must be installed with the attached connectors before being inserted into the drywall.

- Snap the panel onto the FMK snaps (FIG 4) by pressing gently but firmly and evenly on the defined surface areas of the glass until the panel snaps “click” to lock it down..

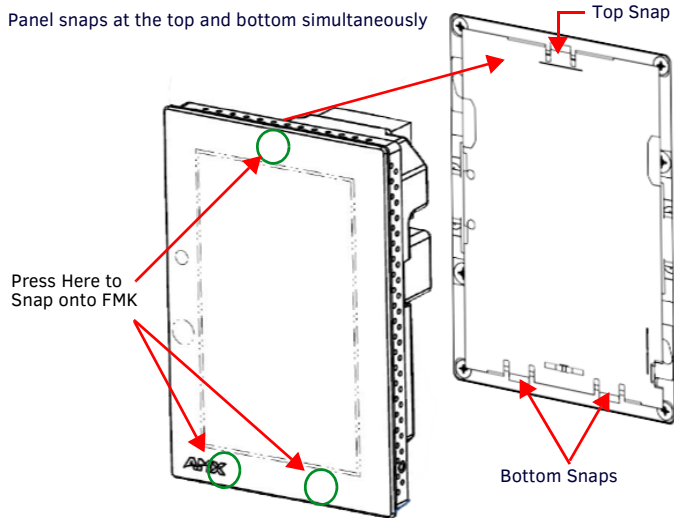


FIG. 4 INSERTING THE MXA-FMK-43 INTO THE WALL SURFACE

Using the MXA-FMK-43

Once the touch panel is installed in the MXA-FMK-43, the panel may be extended from the wall for enhanced speaker and microphone exposure and to access the panel's Sleep/Setup button. To extend the panel from the Flush Mount Kit, press gently on both sides of the panel's surface until you hear or feel a “click”. Release the panel to extend it.

To return the touch panel to its flush position, press again gently on both sides of the panel's surface, on the black border on the edge of the panel, until you hear or feel a “click”. When you release the panel's surface, the panel will remain in its flush position.

Removing the Touch Panel From the MXA-FMK-43

The touch panel may only be removed from the MXA-FMK-43 when the touch panel is extended from the wall. For more information on uninstallation of the touch panel in question, please refer to the *Modero X Series G4 Touch Panels Instruction Manual*.

A Note About Wall and Rack Installation

Some products are installed in areas of differing temperature and cooling methodologies. These include products installed in walls, racks, cabinets, etc. Those areas may have different temperatures and/or cooling approaches that must be taken into consideration to maintain the product within the specified operating temperature.

FIG. 5 shows an AMX device installed in a wall with a filled volume (such as with insulation or concrete), as well as with a closed volume (such as between studs in an otherwise finished wall). The diagram shows how heat generated by the device or other devices may have no way to escape, and may build up to levels that may affect device operation.

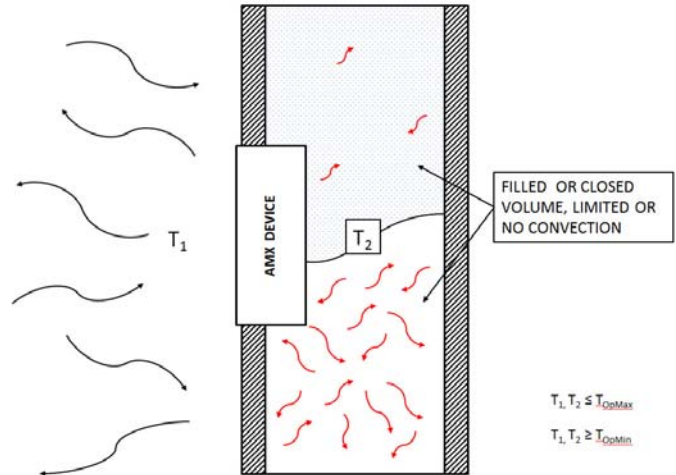


FIG. 5 Heat convection in filled or closed volume, limited or no convection

In FIG. 6, the diagram displays an AMX device in a typical rack mounting, with full air circulation around the front and back of the device. In this case, the main concern is with heat building up between components, possibly to levels that may affect device operation.

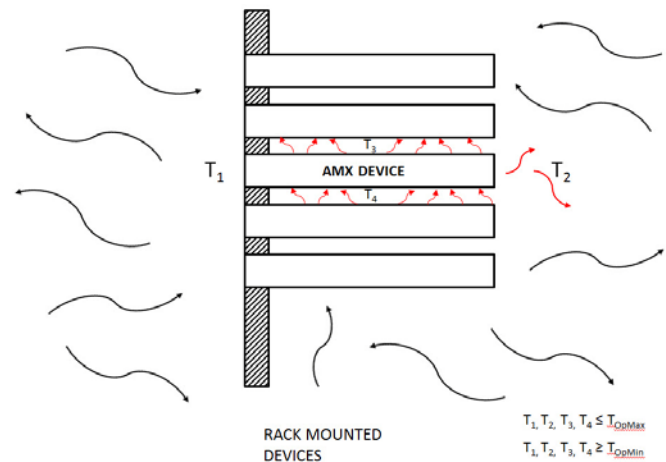


FIG. 6 Heat convection in rack-mounted devices

Installation Recommendations

During any installation, a lack of ventilation may produce conditions that may adversely affect the device's operation. In these circumstances, special care must be made to make sure that temperatures within enclosed areas do not exceed the device's maximum rated temperature.

Additional Documentation

Refer to the [MXA-FMK-43](#) product page at www.amx.com for detailed pictorial, template and mounting specifications drawings.

For details on solid wall placement options for the MXA-FMK-43, refer to the *MXA-FMK-43 Solid Wall and Rough-In Box Installation Quick Start Guide*.



Last Revised: 3/10/2016

© 2016 Harman. All rights reserved. Modero, Modero X and Modero X Series, AMX, AV FOR AN IT WORLD, HARMAN, and their respective logos are registered trademarks of HARMAN. Oracle, Java and any other company or brand name referenced may be trademarks/registered trademarks of their respective companies.

AMX does not assume responsibility for errors or omissions. AMX also reserves the right to alter specifications without prior notice at any time. The AMX Warranty and Return Policy and related documents can be viewed/downloaded at www.amx.com.

3000 RESEARCH DRIVE, RICHARDSON, TX 75082 AMX.com | 800.222.0193 | 469.624.8000 | +1.469.624.7400 | fax 469.624.7153

AMX (UK) LTD, AMX by HARMAN - Auster Road, Clifton Moor, York, YO30 4GD United Kingdom • +44 1904-343-100 • www.amx.com/eu/

93-5968-72 REV: D

