



INSTALLATION MANUAL

AMX DESIGN SUITE / DRIVER DESIGN



COPYRIGHT NOTICE

AMX© 2015, all rights reserved. No part of this publication may be reproduced, stored in a retrieval system, or transmitted, in any form or by any means, electronic, mechanical, photocopying, recording, or otherwise, without the prior written permission of AMX. Copyright protection claimed extends to AMX hardware and software and includes all forms and matters copyrightable material and information now allowed by statutory or judicial law or herein after granted, including without limitation, material generated from the software programs which are displayed on the screen such as icons, screen display looks, etc. Reproduction or disassembly of embodied computer programs or algorithms is expressly prohibited.

LIABILITY NOTICE

No patent liability is assumed with respect to the use of information contained herein. While every precaution has been taken in the preparation of this publication, AMX assumes no responsibility for error or omissions. No liability is assumed for damages resulting from the use of the information contained herein. Further, this publication and features described herein are subject to change without notice.

AMX WARRANTY AND RETURN POLICY

The AMX Warranty and Return Policy and related documents can be viewed/downloaded at www.amx.com.

Table of Contents

- AMX Design Suite 4**
 - Overview 4
 - AMX Design Suite System Requirements 4**
 - Verifying Your AMX.COM Account Login Information 4
 - Installing AMX Design Suite 4**
 - Launching AMX Design Suite 6**
 - Uninstalling AMX Design Suite and Driver Design 7
- Updating Driver Design 8**
 - Overview 8
 - Updating Plug-ins via Automatic Update 8**
 - Setting Automatic Updates Preferences 10**
 - Updating Driver Design via "Check For Updates" 10**
 - Viewing AMX Design Suite Installation Details 11**
 - Viewing Plug-In Installation Details 11
 - Installed Software 11
 - Installation History 12
 - Features 12
 - Configuration 13

AMX Design Suite

Overview

AMX Design Suite is an integrated development environment (IDE) based on the Eclipse platform that supports the Driver Design plug-in from AMX. Use Driver Design to create XDD files (aka Device Drivers) that can be used with NetLinx control systems. AMX Design Suite also provides the ability to upload and download XDD's to/from AMX's online *InConcert Resource Center*.

AMX Design Suite System Requirements

- **Supported Operating Systems:** Windows 7/8 (32-bit and 64-bit)
- **NetLinx System Requirements:** NetLinx Master Firmware version 4.1 or higher

Verifying Your AMX.COM Account Login Information

In order to access the [AMX InConcert Resource Center](#), you must have valid login credentials (*Username* and *Password*) for [www.amx.com](#). AMX Design Suite connects to the AMX InConcert Resource Center, to upload and download XDD's (aka Device Drivers).

To verify that you have valid login credentials, visit the [Login Center](#) page at [www.amx.com](#) (FIG. 1):

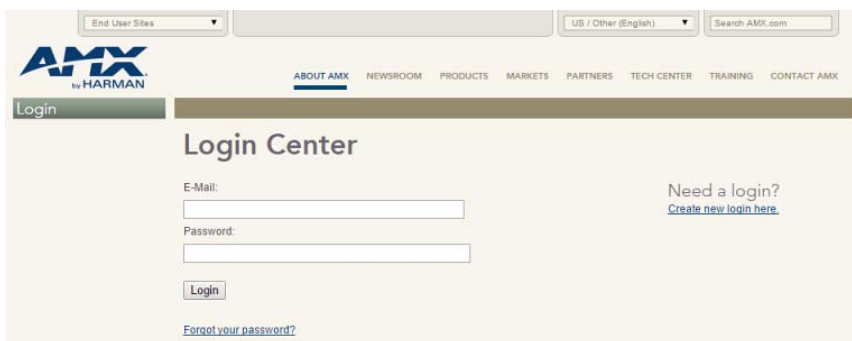


FIG. 1 [www.amx.com](#) - Login Center Page

Follow the on-screen instructions to either login or create a new account.

Installing AMX Design Suite

NOTE: In Windows 7, the installer must be run with full admin rights.

1. Launch the appropriate AMX Design Suite installer (*AMX Design Suite 32bit Installer.exe* or *AMX Design Suite 64bit Installer.exe*), based on the PC's operating system. This launches the *AMX Design Suite Setup Wizard* (FIG. 2). Click **Next** to proceed.



FIG. 2 Welcome to the AMX Design Suite Setup Wizard dialog

2. Click **Next** on the *Configure Shortcuts* and *Select Installation Folder* dialogs to configure the installation (FIG. 3):

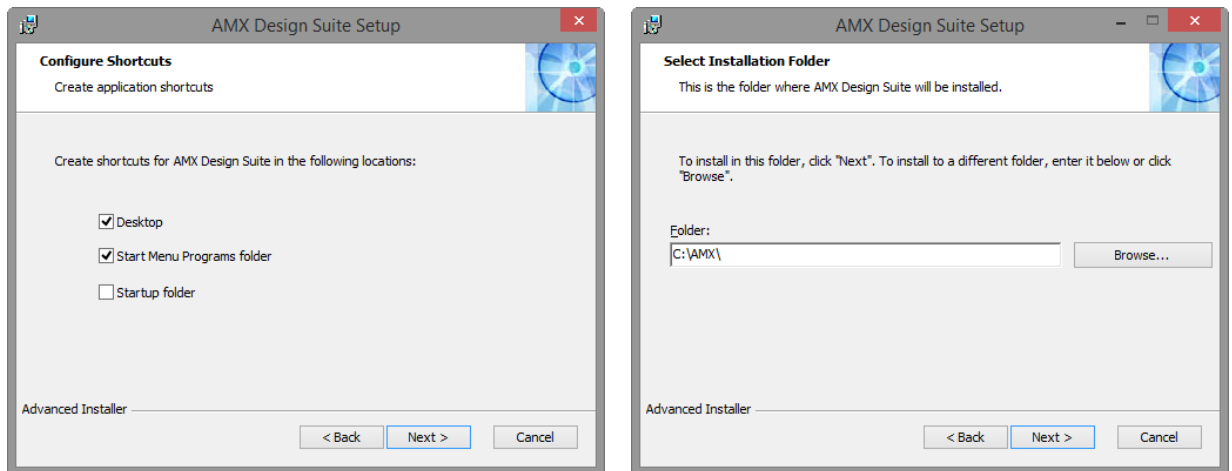


FIG. 3 AMX Design Suite Setup Wizard - Configure Shortcuts and Select Installation Folder dialogs

3. In the *Ready to Install* dialog, click **Install** (FIG. 4):

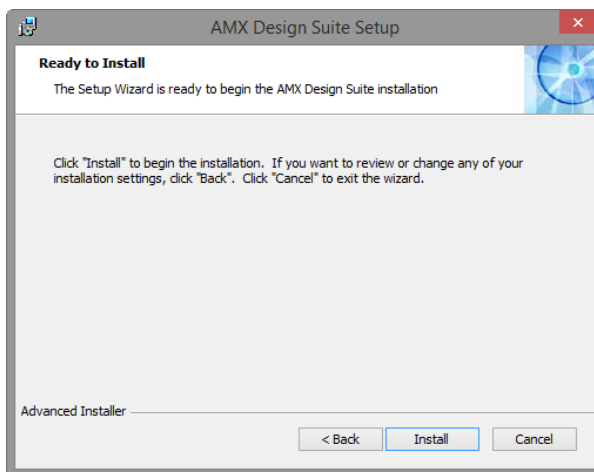


FIG. 4 AMX Design Suite Setup Wizard - Ready to Install dialog

4. Progress is indicated in the *Installing AMX Design Suite* dialog (FIG. 5):

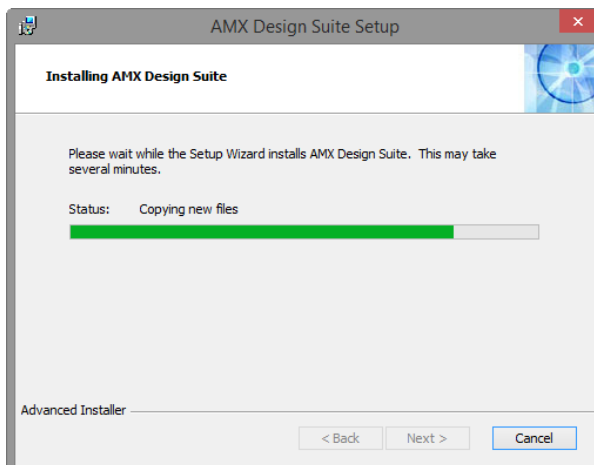


FIG. 5 AMX Design Suite Setup Wizard - Ready to Install dialog

5. When the installation is complete, the *Completing the AMX Design Suite Setup Wizard* dialog is displayed (FIG. 6):

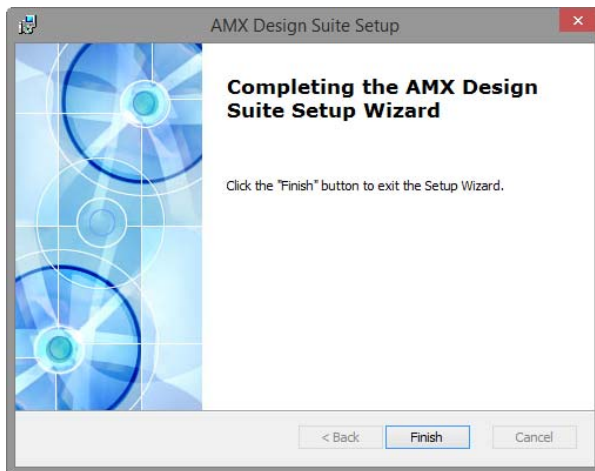


FIG. 6 AMX Design Suite Setup Wizard - Completing the AMX Design Suite Setup Wizard dialog

6. Click **Finish** to close the Installation Wizard.

Launching AMX Design Suite

Assuming the default settings were accepted in the *Configure Shortcuts* and *Select Installation Folder Setup Wizard* dialogs, AMX Design Suite can be launched via the Desktop Icon.

NOTE: *The AMX Design Suite application must be run with full admin rights.*

1. The first time Design Suite is launched, it prompts for login credentials (FIG. 7).



FIG. 7 AMX Design Suite Setup Wizard - AMX.com Login Information

2. Enter your login information for www.amx.com, select *Remember My Password*, and click **Save**. This invokes the *Secure Storage* dialog (FIG. 8):



FIG. 8 AMX Design Suite Setup Wizard - Secure Storage

3. Click **Yes** to proceed to the *Password Recovery Setup* dialog (FIG. 9):

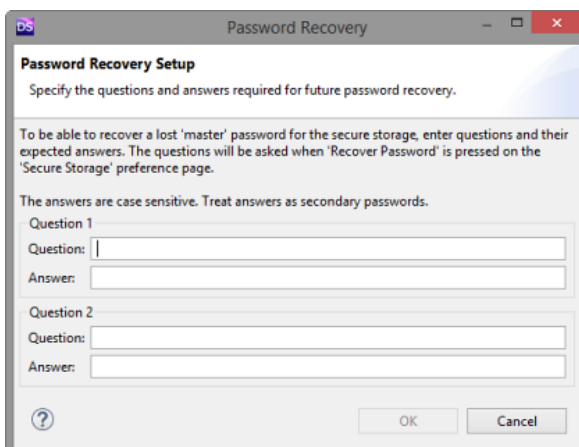


FIG. 9 AMX Design Suite Setup Wizard - Password Recovery Setup dialog

Use the options in this dialog to configure a set of questions and answers for future password recovery.

4. Click **OK** to save changes and proceed to Driver Design perspective. The Driver Design perspective shows all the views and editors related to the Driver Design plug-in. FIG. 10 provides an example view of the Driver Design perspective:

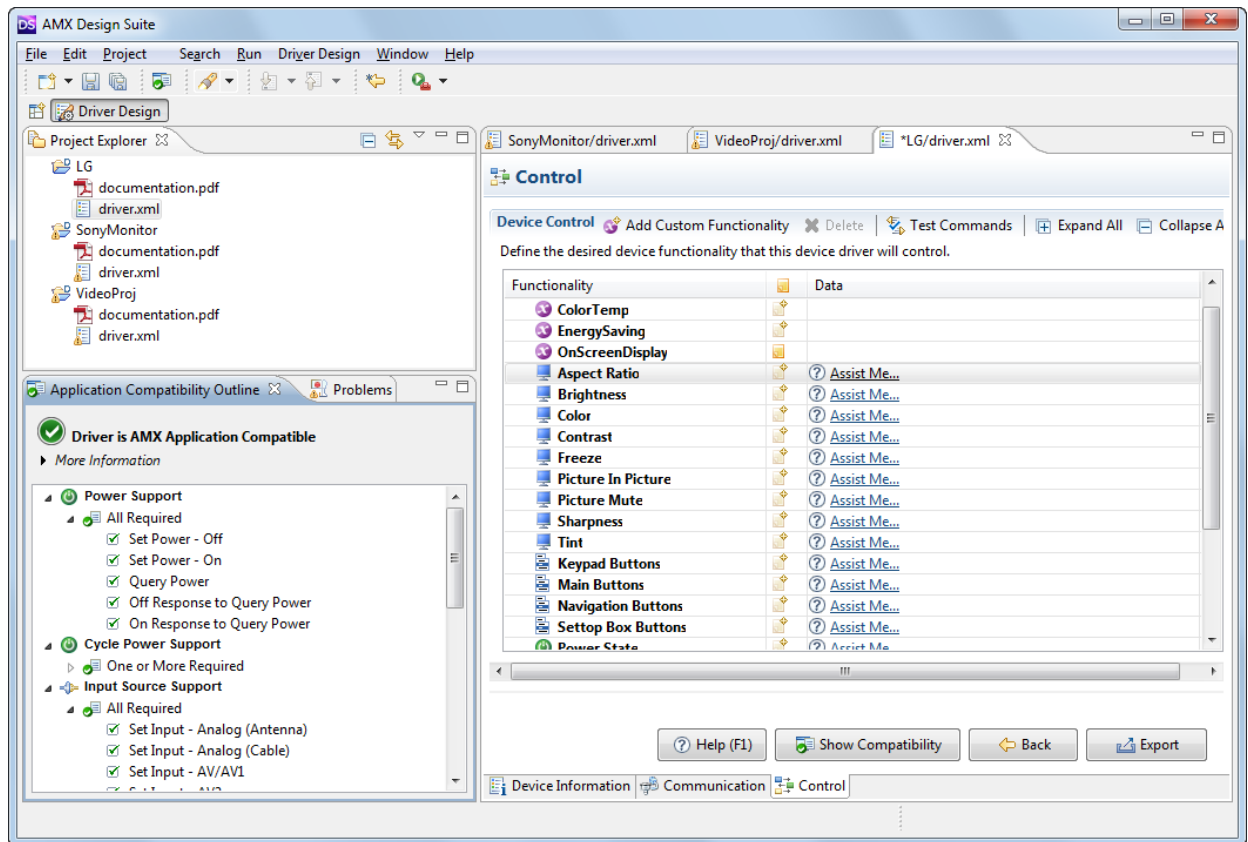


FIG. 10 Driver Design perspective (example view)

NOTE: Refer to the *Driver Design Instruction Manual* for directions on using Driver Design to create and export Device Driver (XDD) files.

Uninstalling AMX Design Suite and Driver Design

AMX Design Suite and Driver Design should be uninstalled via Windows *Add/Remove Programs*.

Updating Driver Design

Overview

Driver Design can be updated either via *Automatic Update*, or manually via the **Help > Check for Updates** option, as described below:

Updating Plug-ins via Automatic Update

The *Automatic Update* feature in AMX Design Suite automatically alerts you when new updates for installed plug-ins are available to install. The *Updates Available* popup window is shown in FIG. 11:

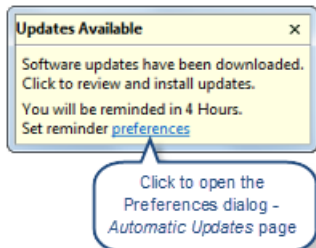


FIG. 11 Automatic Update popup

By default, when this prompt appears the available updates have already been downloaded, and only need to be installed. The default actions for automatic updates can be changed via the *Preferences* dialog (see below).

1. Click inside the popup to review the available updates, in the *Available Updates* dialog (FIG. 12):

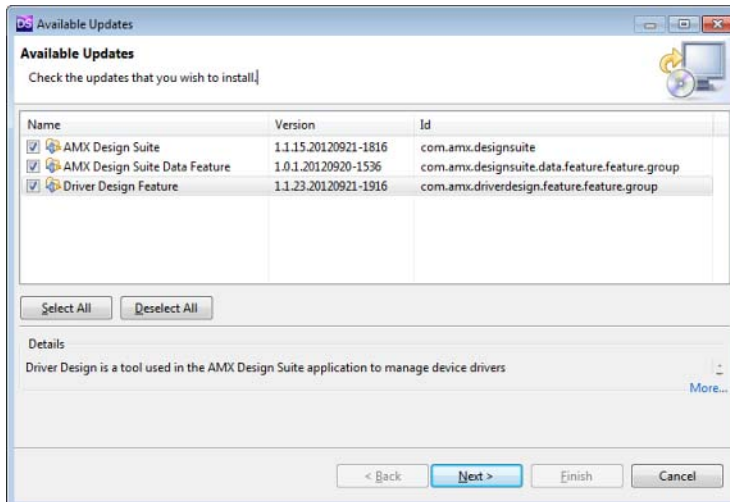


FIG. 12 Available Updates dialog

By default, all available updates are selected for installation.

NOTE: Click on any update in the list to view a brief description of the update in the *Details* window.

2. Click **Next** to proceed to the *Update Details* dialog. This dialog indicates the updates that are selected for installation (FIG. 13).

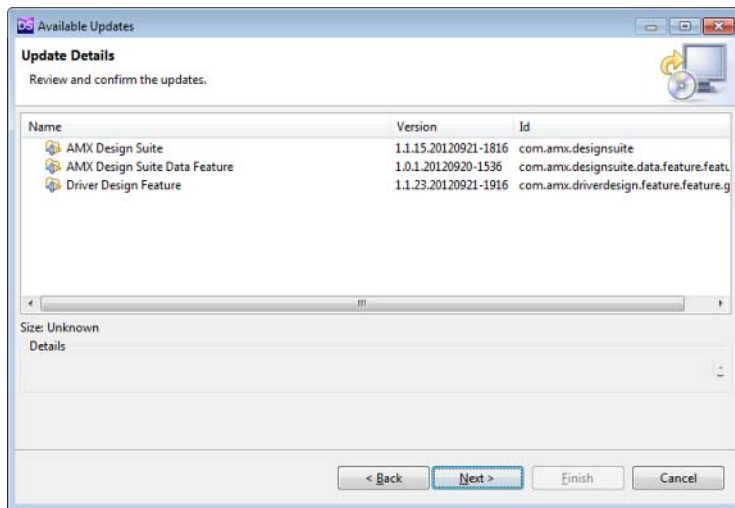


FIG. 13 Update Details dialog

3. Review this list and click **Next** to proceed to the *Review Licenses* dialog (FIG. 14):

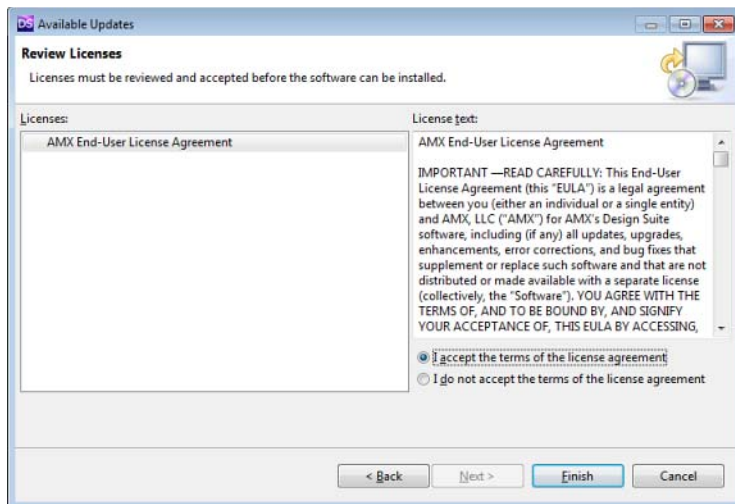


FIG. 14 Review Licenses dialog

4. Click *I accept the terms of the license agreement* to enable the **Finish** button.
5. Click **Finish** to install the selected updates.
6. The progress of the installation is indicated in the *Updating Software* dialog (FIG. 15):

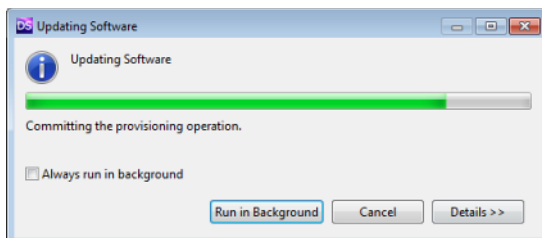


FIG. 15 Updating Software dialog

7. When the installation is complete, the program will prompt you to restart AMX Design Suite (FIG. 16):

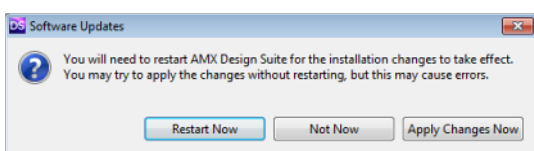


FIG. 16 Software Updates dialog

8. Click **Restart Now** to restart AMX Design Suite with the updated software installed.

Setting Automatic Updates Preferences

The options in the **Automatic Updates** page of the *Preferences* dialog allow you to specify how often to check for updates, as well as the default actions for updates (FIG. 17):

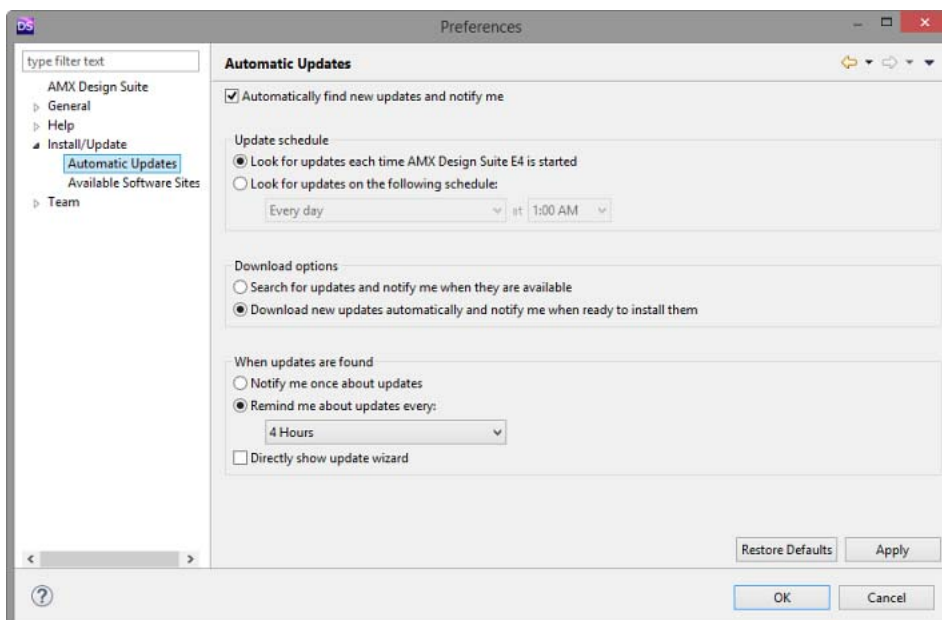


FIG. 17 Preferences dialog - Automatic Updates page

The options in this dialog are described below:

Preferences dialog - Automatic Updates options	
Automatically find new updates and notify me:	This option enables or disables the Automatic Update feature in AMX Design Suite. This is the default setting. If you de-select this option, software updates will not be indicated via the <i>Updates Available</i> popup window (see FIG. 11 on page 8)
Update Schedule:	<ul style="list-style-type: none"> <i>Look for updates each time AMX Design Suite is started:</i> This is the default setting. <i>Look for updates on the following schedule:</i> Click this option to schedule looking for software updates. When this option is selected, the drop-down menus for <i>Day</i> and <i>Time</i> are enabled. Use these options to specify when to check for updates.
Download Options:	<ul style="list-style-type: none"> <i>Search for updates and notify me when they are available:</i> Click this option to receive a notification when updates are available to download. <i>Download new updates automatically and notify me when ready to install them:</i> This is the default setting.
When Updates are Found:	<ul style="list-style-type: none"> <i>Notify me once about updates:</i> Click this option to be notified only once when software updates are available. <i>Remind me about updates every (4 hours):</i> This is the default setting. To change the frequency of these checks, select from the <i>Hours</i> drop-down menu.
Directly Show Update Wizard:	With this option selected, when updates are found, the Automatic Update popup (see FIG. 11 on page 8) is bypassed, and the <i>Available Updates</i> dialog is launched automatically. By default, this option is not selected.

Updating Driver Design via "Check For Updates"

1. Select Help > Check For Updates.
2. In the Available Updates dialog, any available software updates are listed in the top window, indicating basic information (Name, Version and ID).
 - Click on an item in the list to populate the Details window with more detailed information.
 - Click More to open the Properties dialog to view additional details including Copyright information and the AMX License Agreement information for the selected item.
3. Check the updates that you wish to install in the list of available updates.
4. Click **Next** to proceed to the Update Details dialog, to review and confirm the selected update(s).
5. Click **Next** to proceed to the Review Licenses dialog. Review and accept the license, and click Finish to begin installing update(s).
6. The program will prompt you to restart AMX Design Suite (select **Restart Now**).

NOTE: AMX Design Suite can be restarted at any time via the File > Restart option.

Viewing AMX Design Suite Installation Details

Click **Help > About AMX Design Suite** to open the *About AMX Design Suite* dialog, which provides copyright information for AMX Design Suite products (FIG. 18):

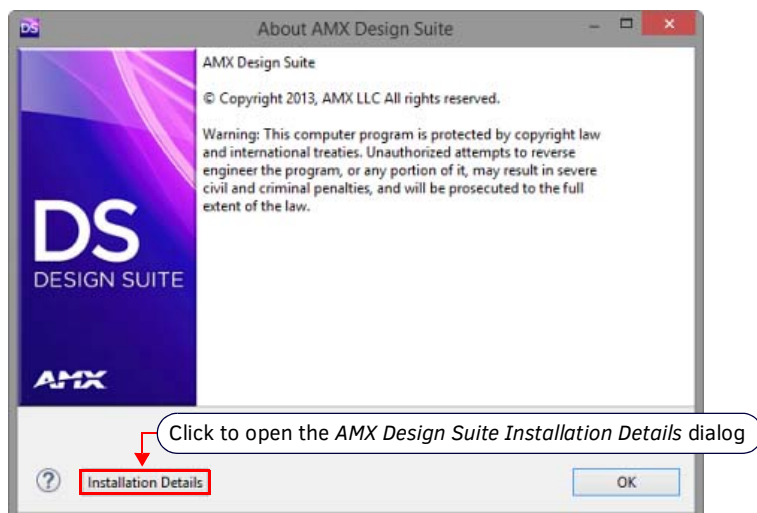


FIG. 18 About AMX Design Suite dialog

Viewing Plug-In Installation Details

Click **Installation Details** to open the *AMX Design Suite Installation Details* dialog. This tabbed dialog provides detailed product information for all installed plug-ins:

Installed Software

This tab provides detailed information for each installed plug-in (FIG. 19). Select an entry in the list to enable the *Update*, *Uninstall* and *Properties* command buttons at the bottom of the window.

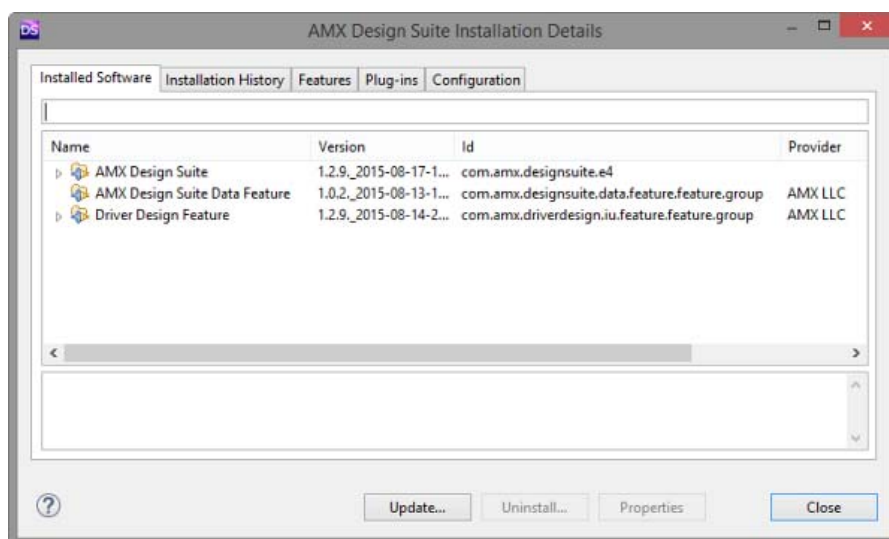


FIG. 19 AMX Design Suite Installation Details dialog - Installed Software tab

- The *Update* and *Uninstall* options in this tab are for advanced users only. See the *Updating Plug-ins via Automatic Update* section on page 8 for details.
- Click **Properties** to open the *Properties* dialog which provides read-only Copyright Information, General Information and the License Agreement for reference.

Installation History

The *Previous Configurations* tab lists the current configuration, and all previous configurations (FIG. 20). Select a previous configuration to populate the *Configuration Contents* window with details on the selection.

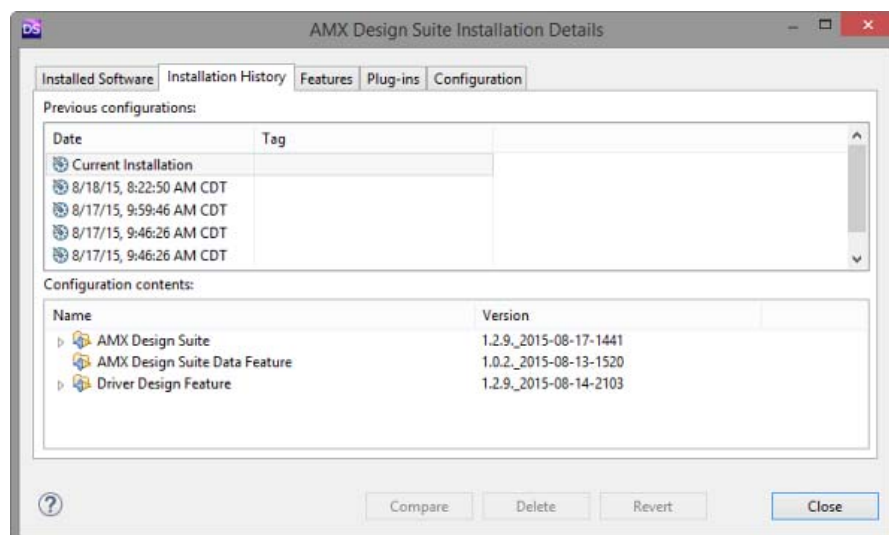


FIG. 20 AMX Design Suite Installation Details dialog – Installation History tab

When you select a previous configuration, the *Delete* and *Revert* buttons are enabled.

- Click **Revert** to revert to the selected configuration.
- Click **Delete** to delete to the selected configuration.

Features

The *Features* tab provides detailed information on all installed features (FIG. 21). Select a feature in the top window to view copyright and build details in the lower window.

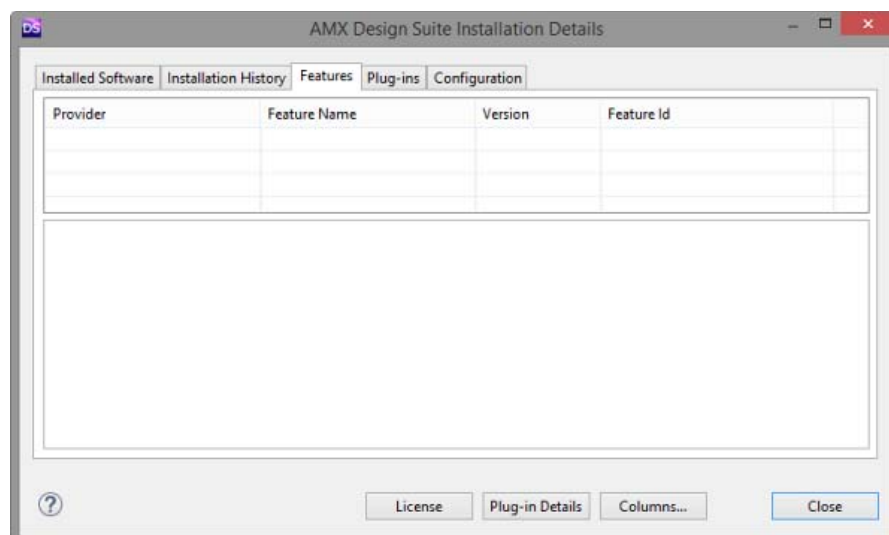


FIG. 21 AMX Design Suite Installation Details dialog – Features tab

When you select a feature, the *License*, *Plug-in* and *Revert* buttons are enabled.

- Click **License** to view the End-User License Agreement associated with the selected feature.
- Click **Plug-in Details** to view details on the plug-ins associated with the selected feature.
- Click **Columns** to open the *Configure Columns* dialog. This dialog allows you to specify which columns to display in the plug-ins tab, and set the width for each column.

The *Plug-ins* tab provides detailed information on all installed plug-ins (FIG. 22). Select an entry in the list to enable the *Legal Info*, *Show Signing Info* and *Columns* command buttons at the bottom of the window.

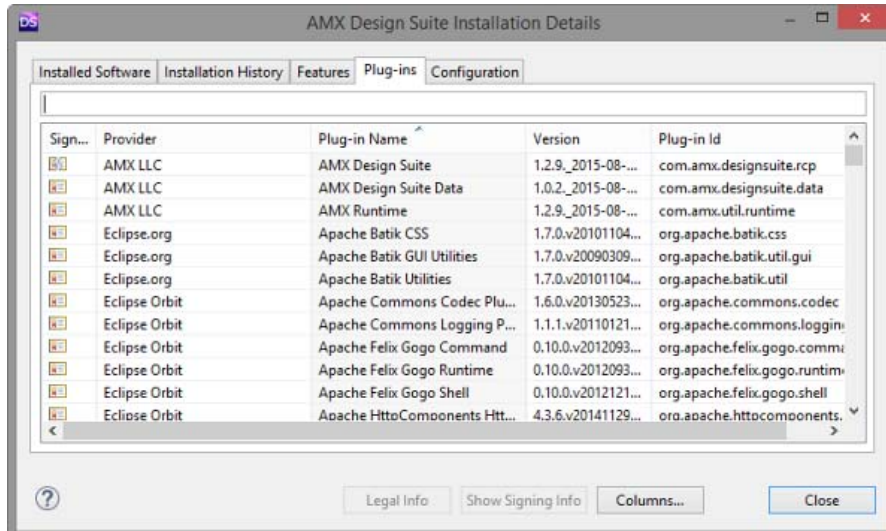


FIG. 22 AMX Design Suite Installation Details dialog - Plug-ins tab

- Click **Legal Info** to open a window providing copyright/legal information for the selected plug-in.
- Click **Show Signing Info** to open a window providing date information and details on the selection's Signing Certificate. Click **Hide Signing Info** to close this window.
- Click **Columns** to open the *Configure Columns* dialog. This dialog allows you to specify which columns to display in the plug-ins tab, and set the width for each column.

Configuration

The *Configuration* tab provides a report containing various pieces of information about your installation, including plug-in versions, preference settings, and the contents of the internal log file. Use this tab to browse detailed information about the current installation and capture that information when reporting a problem with your setup (FIG. 23):

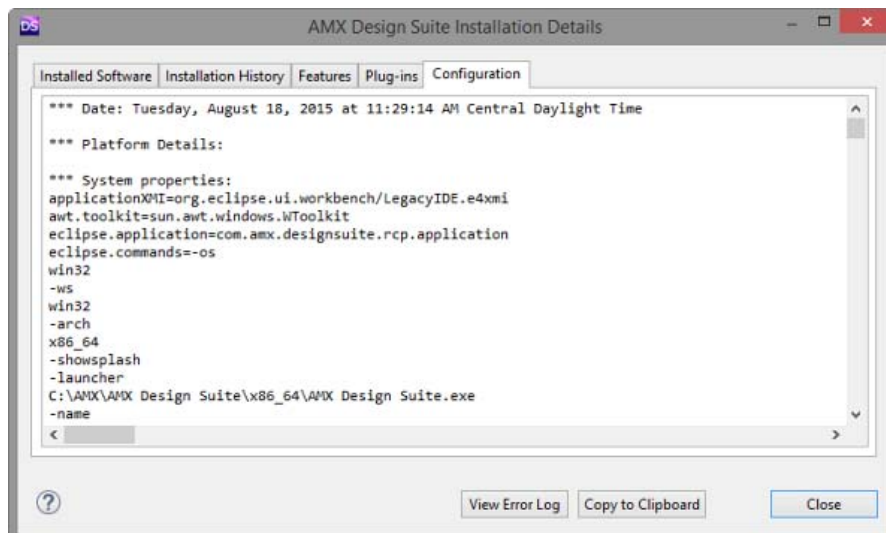


FIG. 23 AMX Design Suite Installation Details dialog - Configuration tab

- Click **View Error Log** to open the Error Log in your default browser. The Error Log view captures all the warnings and errors logged by plug-ins. The underlying log file is a .log file stored in the ".metadata" subdirectory of the workspace.
- Click **Copy To Clipboard** to copy the configuration report to clipboard memory. You may then paste this information into a file and attach it to a problem report.
- Click **Close** to close the *AMX Design Suite Product Installation Details* dialog.



© 2015 Harman. All rights reserved. AMX, AV FOR AN IT WORLD, and HARMAN, and their respective logos are registered trademarks of HARMAN. Oracle, Java and any other company or brand name referenced may be trademarks/registered trademarks of their respective companies.

AMX does not assume responsibility for errors or omissions. AMX also reserves the right to alter specifications without prior notice at any time.

The AMX Warranty and Return Policy and related documents can be viewed/downloaded at www.amx.com.

3000 RESEARCH DRIVE, RICHARDSON, TX 75082

AMX.com | 800.222.0193 | 469.624.8000 | +1.469.624.7400 | fax 469.624.7153

Last Revised:
8/19/2015