

Overview

Solecis devices are configured using the *AMX Solecis DCS* software application, available for download from www.amx.com.

Installing the AMX Solecis DCS Application

1. Download the AMX Solecis DCS installation file from www.amx.com (go to the **Products** page and search for *Solecis DCS*).
2. Double-click the installation file to launch the *AMX Solecis DCS Setup Wizard*. Click **Next** to proceed.
3. Select a destination directory for the installation, or select **Next** to install to the default location: **C:\Program Files\AMX Solecis DCS** (recommended).

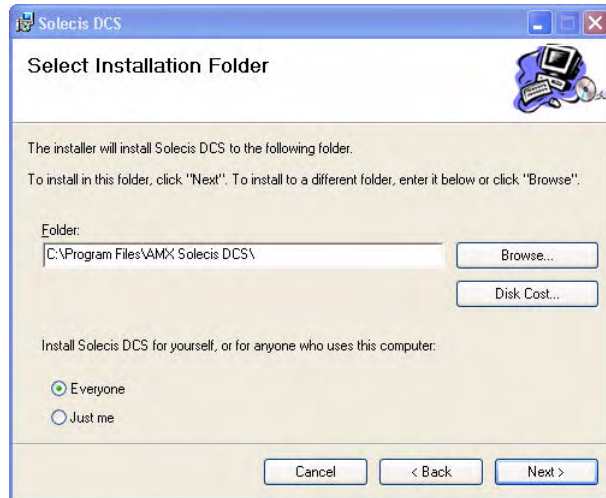


FIG. 1 Select Installation Folder

Optionally, click the **Disk Cost** button to view the available drive space on each available drive in the *Solecis DCS Disk Space* dialog (FIG. 2).

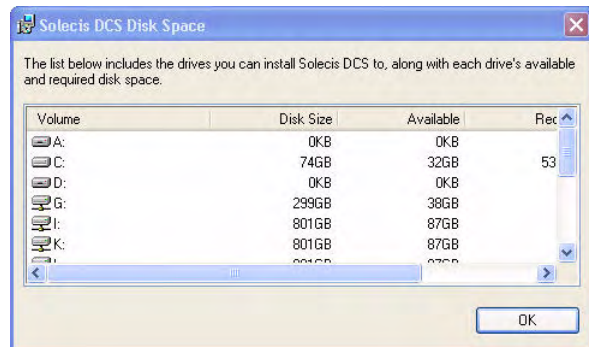


FIG. 2 Solecis DCS Disk Space dialog

4. Click **Next** on each of the following dialogs to complete a standard installation (recommended).
5. In the *Installation Complete* dialog, click **Close** to finish.

Launching AMX Solecis DCS

Assuming you followed the default installation procedures, launch the AMX Solecis DCS application by double-clicking the program icon on your desktop (FIG. 3).



FIG. 3 AMX Solecis DCS - Program icon

Note: Alternatively, navigate to **Start > Programs > AMX Solecis DCS**, and click on the program icon.

Using AMX Solecis DCS

Finding Your Device

1. In the *Attached Devices* dialog, click on the **Find Devices** button (FIG. 4).

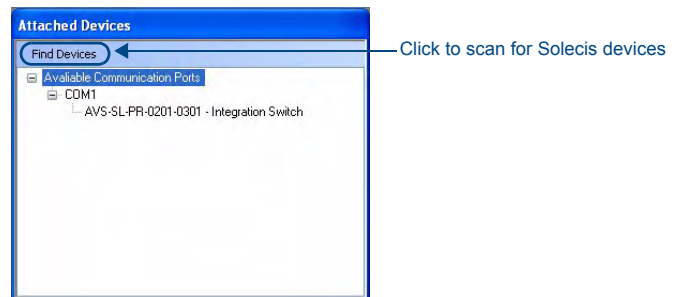


FIG. 4 Attached Devices dialog

2. This causes the Solecis DCS application to scan all available COM ports for supported devices. All detected Solecis devices are listed under their respective COM Port, in the *Attached Devices* dialog.

Note: Verify that all devices are powered up, so that they can be identified by *Solecis DCS*.

Configuring Solecis Devices

1. In the *Attached Device* dialog, double-click the device that you want to configure.
2. This invokes a Configuration dialog for the selected device. The options in this dialog vary depending on the device selected; an example is shown in FIG. 5:

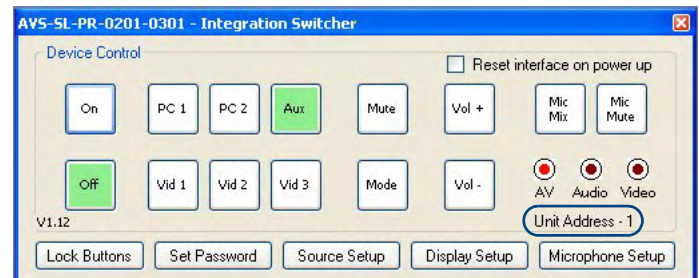


FIG. 5 Sample Configuration dialog

3. Configure the device as desired, referring to the device's Installation Guide for features, functions and parameter definitions.

Changing the Device Address for Solecis Devices

1. Click the **Unit Address** link in the Configuration dialog for a selected Solecis device (see FIG. 5).
2. This invokes the *Enter new address* dialog (FIG. 6):

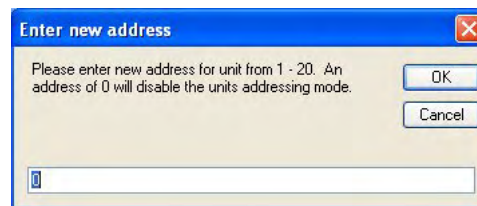


FIG. 6 Enter new address dialog

3. Enter the new address, from 1 to 20 in the text field.

Note: An address of zero will disable the unit's addressing mode.

Using the Library

The *Library* function in Solecis DCS allows you to view and edit the contents of each Library file.

Selecting a Library File

1. Select **Library > Open** to open the *Library* dialog (FIG. 7).
 - In the *Devices* window, click on the **IR** or **RS232** folders to expand the view to list Manufacturers of devices in that control category.
 - Click on a Manufacturer to view a listing of all device types available (i.e. Projector, DVD Player, etc.) for that Manufacturer.

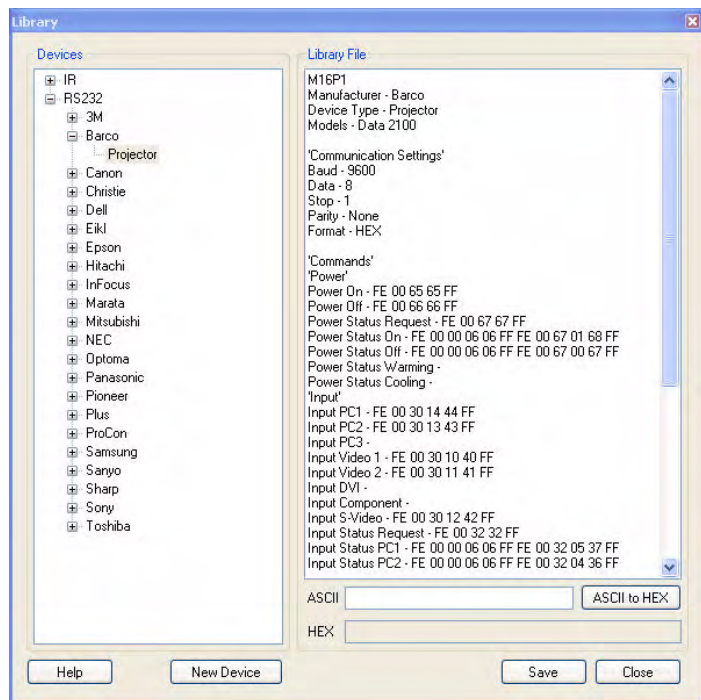


FIG. 7 Library dialog

2. Click to select a Manufacturer/Device type in the *Devices* window.
3. The contents of the selected device's Library file are displayed in the *Library File* window.
4. To edit the file, select and type directly in the *Library File* window, and click **Save** to save your changes.

Adding a Device to the Device Library

1. Select **New Device** to open the *Add New Device* dialog (FIG. 8).



FIG. 8 Add New Device dialog

2. Select either **RS232** or **IR** as the control type.
3. Select a *Manufacturer* from the drop-down list, or type it into the text field.
4. Select the *Device Type* from the drop-down list, or type it into the text field.
5. Click **Create** to add the new device to the listing in the *Devices* window.
6. Enter the control information in the *Library File* window.
7. Click **Save** to save your changes.

Converting ASCII Control Strings to Hex

Use the *Ascii to Hex* feature of the *Library* dialog to convert Ascii control strings to Hex format:

1. Select an Ascii control string in the *Library File* window, and copy it to clipboard memory (Ctrl+C).
2. Paste the string into the *ASCII* text field.
3. Click the **ASCII to HEX** button.
4. The converted Hex string is displayed in the *HEX* text field (FIG. 9).

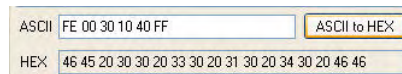


FIG. 9 ASCII to HEX conversion

Note: You can copy and paste the contents of the *HEX* text field.