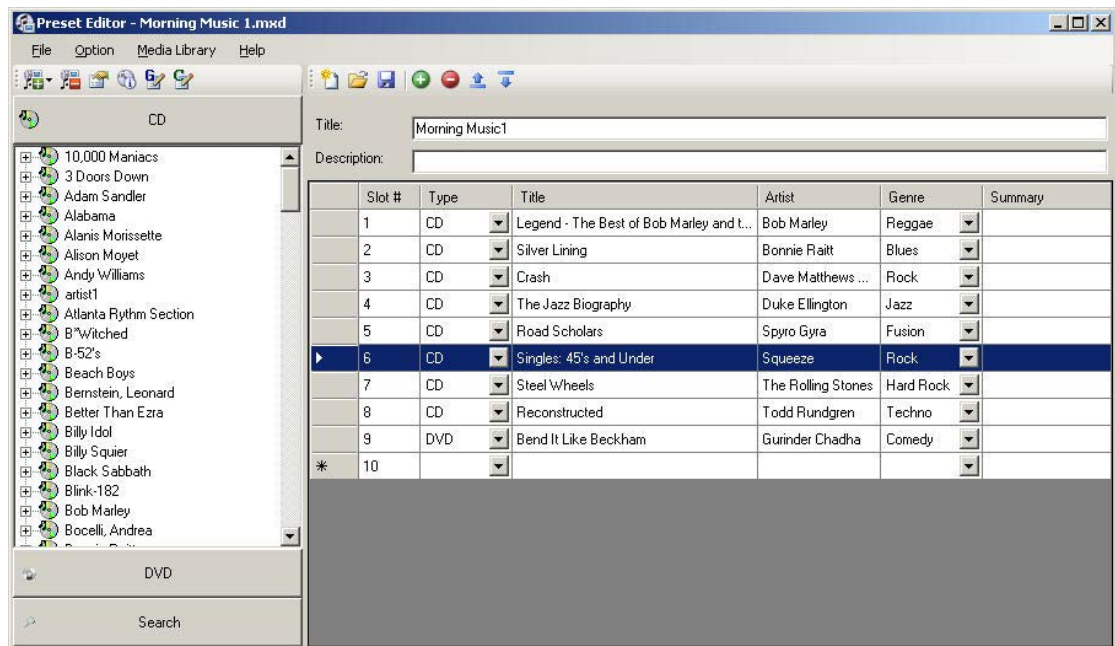




## Operation/Reference Guide

# Preset Editor

Version 1.4 (or higher)



# AMX Software License and Warranty Agreement

- **LICENSE GRANT.** AMX grants to Licensee the non-exclusive right to use the AMX Software in the manner described in this License. The AMX Software is licensed, not sold. This license does not grant Licensee the right to create derivative works of the AMX Software. The AMX Software consists of generally available programming and development software, product documentation, sample applications, tools and utilities, and miscellaneous technical information. Please refer to the README.TXT file on the compact disc or download for further information regarding the components of the AMX Software. The AMX Software is subject to restrictions on distribution described in this License Agreement. AMX Dealer, Distributor, VIP or other AMX authorized entity shall not, and shall not permit any other person to, disclose, display, loan, publish, transfer (whether by sale, assignment, exchange, gift, operation of law or otherwise), license, sublicense, copy, or otherwise disseminate the AMX Software. Licensee may not reverse engineer, decompile, or disassemble the AMX Software.
- **ACKNOWLEDGEMENT.** You hereby acknowledge that you are an authorized AMX dealer, distributor, VIP or other AMX authorized entity in good standing and have the right to enter into and be bound by the terms of this Agreement.
- **INTELLECTUAL PROPERTY.** The AMX Software is owned by AMX and is protected by United States copyright laws, patent laws, international treaty provisions, and/or state of Texas trade secret laws. Licensee may make copies of the AMX Software solely for backup or archival purposes. Licensee may not copy the written materials accompanying the AMX Software.
- **TERMINATION.** AMX RESERVES THE RIGHT, IN ITS SOLE DISCRETION, TO TERMINATE THIS LICENSE FOR ANY REASON UPON WRITTEN NOTICE TO LICENSEE. In the event that AMX terminates this License, the Licensee shall return or destroy all originals and copies of the AMX Software to AMX and certify in writing that all originals and copies have been returned or destroyed.
- **PRE-RELEASE CODE.** Portions of the AMX Software may, from time to time, as identified in the AMX Software, include PRE-RELEASE CODE and such code may not be at the level of performance, compatibility and functionality of the GA code. The PRE-RELEASE CODE may not operate correctly and may be substantially modified prior to final release or certain features may not be generally released. AMX is not obligated to make or support any PRE-RELEASE CODE. ALL PRE-RELEASE CODE IS PROVIDED "AS IS" WITH NO WARRANTIES.
- **LIMITED WARRANTY.** AMX warrants that the AMX Software (other than pre-release code) will perform substantially in accordance with the accompanying written materials for a period of ninety (90) days from the date of receipt. AMX DISCLAIMS ALL OTHER WARRANTIES, EITHER EXPRESS OR IMPLIED, INCLUDING, BUT NOT LIMITED TO IMPLIED WARRANTIES OF MERCHANTABILITY AND FITNESS FOR A PARTICULAR PURPOSE, WITH REGARD TO THE AMX SOFTWARE. THIS LIMITED WARRANTY GIVES LICENSEE SPECIFIC LEGAL RIGHTS. Any supplements or updates to the AMX SOFTWARE, including without limitation, any (if any) service packs or hot fixes provided to Licensee after the expiration of the ninety (90) day Limited Warranty period are not covered by any warranty or condition, express, implied or statutory.
- **LICENSEE REMEDIES.** AMX's entire liability and Licensee's exclusive remedy shall be repair or replacement of the AMX Software that does not meet AMX's Limited Warranty and which is returned to AMX in accordance with AMX's current return policy. This Limited Warranty is void if failure of the AMX Software has resulted from accident, abuse, or misapplication. Any replacement AMX Software will be warranted for the remainder of the original warranty period or thirty (30) days, whichever is longer. Outside the United States, these remedies may not be available. NO LIABILITY FOR CONSEQUENTIAL DAMAGES. IN NO EVENT SHALL AMX BE LIABLE FOR ANY DAMAGES WHATSOEVER (INCLUDING, WITHOUT LIMITATION, DAMAGES FOR LOSS OF BUSINESS PROFITS, BUSINESS INTERRUPTION, LOSS OF BUSINESS INFORMATION, OR ANY OTHER PECUNIARY LOSS) ARISING OUT OF THE USE OF OR INABILITY TO USE THIS AMX SOFTWARE, EVEN IF AMX HAS BEEN ADVISED OF THE POSSIBILITY OF SUCH DAMAGES. BECAUSE SOME STATES/COUNTRIES DO NOT ALLOW THE EXCLUSION OR LIMITATION OF LIABILITY FOR CONSEQUENTIAL OR INCIDENTAL DAMAGES, THE ABOVE LIMITATION MAY NOT APPLY TO LICENSEE.
- **U.S. GOVERNMENT RESTRICTED RIGHTS.** The AMX Software is provided with RESTRICTED RIGHTS. Use, duplication, or disclosure by the Government is subject to restrictions as set forth in subparagraph ©(1)(ii) of The Rights in Technical Data and Computer Software clause at DFARS 252.227-7013 or subparagraphs ©(1) and (2) of the Commercial Computer Software Restricted Rights at 48 CFR 52.227-19, as applicable.
- **SOFTWARE AND OTHER MATERIALS FROM AMX.COM MAY BE SUBJECT TO EXPORT CONTROL.** The United States Export Control laws prohibit the export of certain technical data and software to certain territories. No software from this Site may be downloaded or exported (i) into (or to a national or resident of) Cuba, Iraq, Libya, North Korea, Iran, Syria, or any other country to which the United States has embargoed goods; or (ii) anyone on the United States Treasury Department's list of Specially Designated Nationals or the U.S. Commerce Department's Table of Deny Orders. AMX does not authorize the downloading or exporting of any software or technical data from this site to any jurisdiction prohibited by the United States Export Laws.

**This Agreement replaces and supersedes all previous AMX Software License Agreements and is governed by the laws of the State of Texas, and all disputes will be resolved in the courts in Collin County, Texas, USA. For any questions concerning this Agreement, or to contact AMX for any reason, please write: AMX License and Warranty Department, 3000 Research Drive, Richardson, TX 75082.**

# Table of Contents

<b>Preset Editor</b> .....	<b>1</b>
Overview .....	1
Getting Started.....	1
Attaching a Preset File to a VA Project.....	2
The Preset Editor Workspace .....	3
Menu Bar .....	3
File Menu .....	3
Option Menu.....	3
Media Library Menu .....	4
Help Menu .....	4
Media Library Window.....	5
Media Library Toolbar.....	5
Media Library Window - CD tab.....	6
Media Library Window - DVD tab .....	6
Media Library Window - TV tab.....	7
Media Library Window - Radio tab.....	7
Media Library Window - Search tab .....	7
Media Library Window Context Menu .....	7
Preset Content Windows .....	8
Media Preset Content Windows.....	8
Station Preset Content Windows .....	8
Preset Toolbar.....	9
Preset Content Window Context Menu .....	9
<b>The Media Library</b> .....	<b>11</b>
Overview .....	11
Working With the Media Library.....	11
Adding a CD to the Media Library using CDDB.....	11
Adding a CD to the Media Library Manually .....	13
Adding a DVD to the Media Library .....	15
Adding Radio Stations to the Media Library.....	16
Adding TV Stations to the Media Library.....	17
Creating Custom Images for Radio and TV Stations .....	19
Load The Image Into An Open Slot.....	19
Add the Image to a Station Preset.....	19
Editing Disc/Station Properties.....	20
Removing an Entry From the Media Library .....	21
Searching For an Entry in the Media Library.....	22

<b>Adding Multiple Entries to Media Library.....</b>	<b>23</b>
<b>Managing Genres.....</b>	<b>24</b>
Adding a Genre.....	24
Removing a Genre.....	25
<b>Managing Categories.....</b>	<b>25</b>
Pre-Defined (" - [AMX]") Categories.....	25
Adding a Category.....	25
Assigning a TV or Radio Station To The New Category.....	26
Removing a Category.....	26
Renaming Categories.....	27
Copying Categories.....	27
<b>Preset Files.....</b>	<b>29</b>
Media Preset Files (CDs and DVDs).....	29
Creating a New Media Preset File.....	29
Adding All Discs For a Selected Artist To The Preset File (CDs Only).....	30
Adding a Selected Disc (CD or DVD) To a Media Preset File.....	32
Saving the Media Preset File.....	33
Editing Media Preset Files.....	33
Removing a Disc From a Media Preset File.....	34
Station Preset Files (TV and Radio Stations).....	34
Creating a New Station Preset File.....	35
Editing Station Preset Files.....	36
Removing a Station From a Station Preset File.....	37
<b>Configuring FreeCDDDB Options.....</b>	<b>39</b>
Overview.....	39
Automatically Generating the CDDDB Site List.....	39
Manually Adding a CDDDB Server.....	40
Removing a CDDDB Server.....	40

# Preset Editor

## Overview

AMX Preset Editor is a stand-alone application that allows you to add CD and DVD discs to a Media Library, and create Media Preset Files (for CDs & DVDs) and Station Preset Files (for TV/Radio Stations) that can then be added to your VA Project.

Preset Editor is packaged as an integrated utility with VisualArchitect™. To launch Preset Editor from VisualArchitect™, select **File > Preset Editor**.

Alternatively, you can launch Preset Editor from the Start menu (without having to launch VA): Select Programs > AMX Control Disc > VisualArchitect™ > Preset Editor (FIG. 1).



**FIG. 1** Launching Preset Editor (without VA)

There are two basic types of Preset files that can be created and managed with Preset Editor:

- A **Media Database file (\*.MXD)** contains a list of CDs and/or DVDs that correspond to a disc or slot number (for CD/DVD changers with a number of slots, each slot can contain a CD or DVD).
- A **Station Preset file (\*.PXD)** contains a list of station presets. Each preset corresponds to a radio or television channel. Presets work basically like buttons on the face of a receiver - each one jumps to the channel it represents.

## Getting Started

When the Preset Editor application is launched, the Welcome screen is displayed, prompting you to select a starting point for working with the application:

- **New Document:** Click to start a new Preset File document. This option invokes the Create New Preset File dialog, where you are prompted to select the type of Preset File that you want to create. The two types are:  
*Media Preset file* - for CDs and DVDs, with the file extension \*.mxd.  
*Station Preset file* - for TV and Radio stations, with the file extension \*.pxd.
- **Open Document:** Click to open an existing Preset Editor file for editing. This option invokes the Open Existing Preset File dialog, where you can locate and select the Preset file that you want to edit.

It is important to note that before any item (CD, DVD, TV or Radio Station) can be added to a Preset File (Media Preset or Station Preset), it must first be added to the Media Library.

## Attaching a Preset File to a VA Project

The process of attaching a preset file to a VisualArchitect™ (VA) project is simple. Assuming you have already created and saved at least one Preset (\*.mxd or \*.pxd) file, and have at least one controlled device in your VA project:

- In VA, select the (third-party) device to which you want to attach your Preset File.
  - Media Preset Files (\*.mxd)** can only be attached to devices that are capable of playing back audio/video media (including CD/DVD changers). If a device is compatible with Media Preset Files, the "**Media Library File Path**" property is included (in the Properties window) when the device is selected (FIG. 2).

Properties	
Name	Tascam DVD6500
Comments	
Category	DVD Player / Changer
Manufacturer	Tascam
Model Number	DVD6500
Connection Type	R5-232
Duet Module	C:\Program Files\Com...
Media Library File Path	...

FIG. 2 Attaching a Preset File to a VA Project - Media Preset Files (\*.mxd)

- Station Preset Files (\*.pxd)** can only be attached to devices that are capable of selecting TV channels and/or radio stations (including receivers, TVs, etc). If a device is compatible with Station Preset Files, the "**Preset Library File Path**" property is included (in the Properties window) when the device is selected (FIG. 3):

Properties	
Name	Pioneer PRO-1130
Comments	
Category	TV
Manufacturer	Pioneer
Model Number	PRO-1130
Connection Type	R5-232
Duet Module	C:\Program Files\Com...
Preset Library File Path	...

FIG. 3 Attaching a Preset File to a VA Project - Station Preset Files (\*.pxd)

- Use the **Media Library File Path** or **Preset Library File Path** property to select the Preset File that you want to attach to the selected device. Click the Browse (...) button in this field to access the Open dialog, where you can locate and select the desired Preset file.
- Click **OK** to close the Open dialog and attach the selected file to the device.

The path and name of the attached Preset File is indicated in the *Media Library File Path* or *Preset Library File Path* field.

## The Preset Editor Workspace

FIG. 4 shows the basic elements of the Preset Editor workspace:

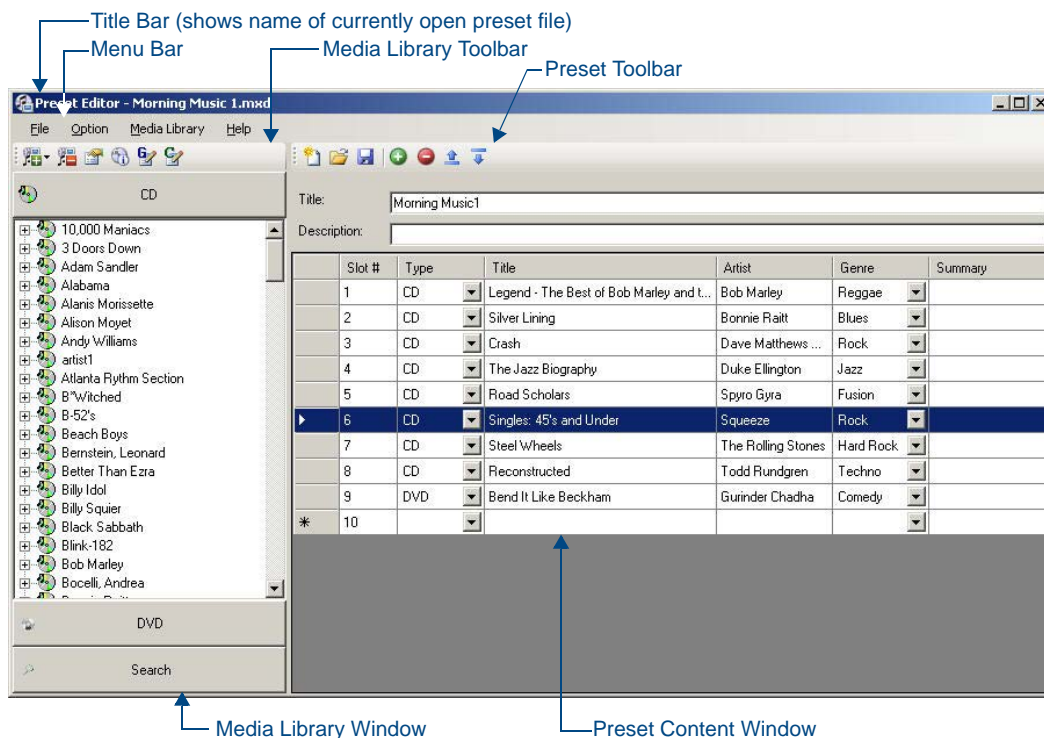


FIG. 4 The Preset Editor Workspace

## Menu Bar

The Preset Editor Menu Bar contains the following menus:

### File Menu

File Menu Options	
• New:	Click to invoke the <i>Create New Preset</i> dialog, where you will specify the type of content database you want to create (Media - CDs and DVDs, or Station - TV/Radio stations Presets).
• Open:	Click to access the <i>Open Existing Preset File</i> dialog, to locate and select existing Media (*.MXD) or Station Preset (*.PXD) files to view and edit.
• Save:	Saves all changes, via the <i>Save Preset File</i> dialog. This option saves the file under it's current name, to it's current location.
• Save As:	Save the active Preset file to a different name and/or location, via the <i>Save Preset File</i> dialog.
• Exit:	Closes the Preset Editor application. The application will prompt you to save any changes before shutting down.

### Option Menu

**Reset Splash Screen** - Select this option to open the *Welcome To the AMX Preset Editor* dialog each time the application is launched. Use this option if you have disabled this dialog via the **Show this dialog at startup** option (FIG. 5):



FIG. 5 Show this dialog at startup option (Welcome To the AMX Preset Editor dialog)

## Media Library Menu

The options in this menu allow you manage the Media Library:

Media Library Menu Options	
• Add Entry to Media Library:	Click to access the Select Type sub menu, to select the type of entry to add (CD, DVD, Radio Station or TV Station). Select a type from this menu to open the appropriate Add <Media Type> to Library dialog.
• Add Multiple Entries to Media Library:	This option allows you add multiple entries of any type. Click to invoke the Select the media type dialog, where you can select the type of entry to add first (CD, DVD, Radio Station or TV Station). Click OK to open the appropriate Add <Media Type> to Library dialog. Fill in the information and click OK to close the Add <Media Type> to Library dialog and return to the Select Media Type dialog to repeat the process as desired. See Adding Multiple Entries to Media Library.
• Remove Entry from Media Library:	Removes the selected entry from the Media Library. The program will prompt you before permanently removing the selected entry. See Removing an Entry From the Media Library for details.
• Edit Properties:	Opens the appropriate Edit <media type> in Library dialog, where you can view and edit the information entered for the selected entry.
• Identify Disc:	Initiates an attempt at identifying the CD in your PC's local CD drive using the online CDDDB database. <b>Note:</b> <i>If the disc is identified, the Disc Properties dialog is invoked, to allow you to review (and edit if necessary) the retrieved disc information. When you press OK in the Disc Properties dialog, the disc is automatically added to the Media Library.</i> See Editing Disc/Station Properties for details.
• Manage Genres:	Opens the Genre Manager dialog to manage the Genres available in the Media Library. See Managing Genres for details.
• Manage Categories:	Opens the Category Manager dialog to manage the Categories available in the Media Library. See Managing Categories for details.
• Configure CDDDB:	This option opens the FreeCDDDB Settings dialog, where you can configure your access to multiple CDDDB sites for disc (audio CD) identification.

## Help Menu

Help Menu Options	
• Preset Editor Help:	Launches this help file.
• About Preset Editor:	Invokes the "About" dialog, which indicates the version number of your Preset Editor application.



## Media Library Window

The Media Library window displays the contents of the Media Library. The Media Library window contains several tabs. The tabs displayed depend on the selection made in the Create New Preset File dialog (FIG. 6):

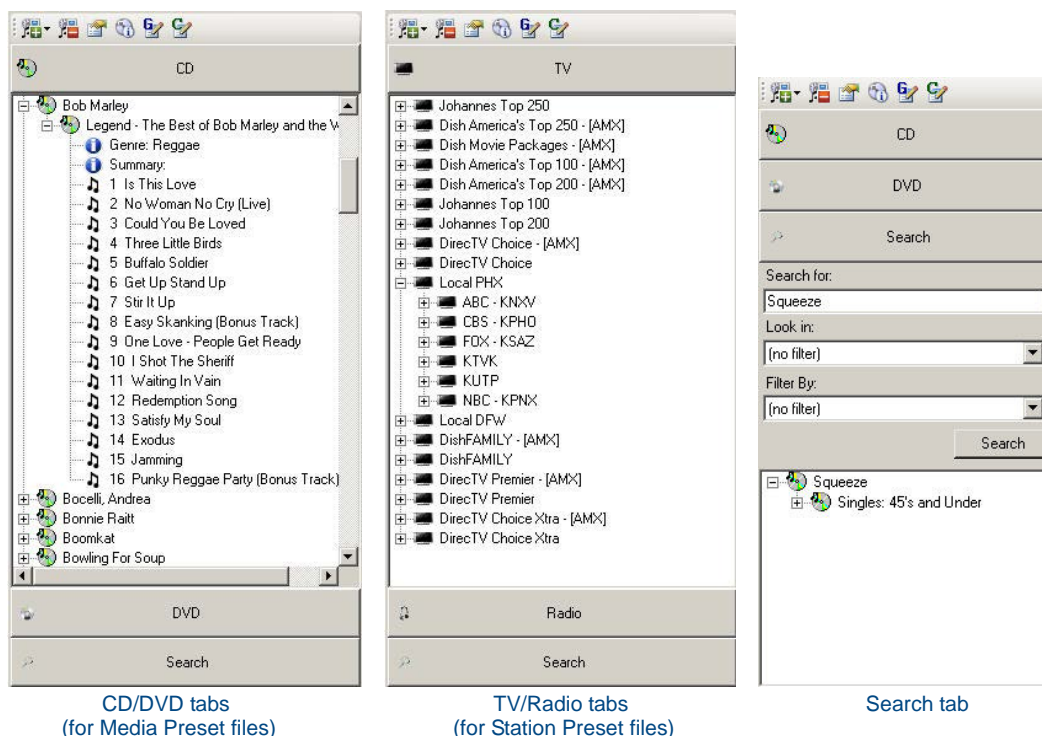


FIG. 6 Media Library Window

- If you selected **Media Preset - CDs and DVDs (\*.mxd)**, then the tabs presented are specific to media presets (CD and DVD). See *Media Preset Content Windows* on page 8.
- If you selected **Station Preset - TV stations and Radio stations (\*.pdx)**, then the tabs presented are specific to station presets (TV and Radio).
- The **Search** tab is displayed regardless of the preset type selected in the Create New Preset File dialog, the Media Library window (see Media Library Bar - Search tab).

## Media Library Toolbar

The Media Library Toolbar provides shortcuts to basic database-oriented functions (FIG. 7):

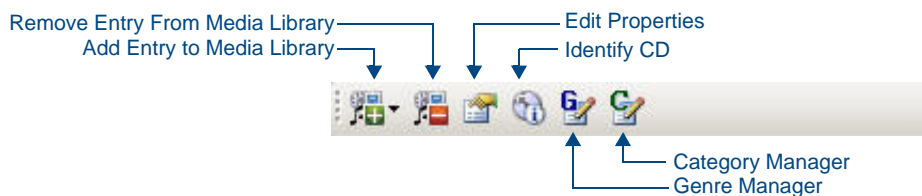


FIG. 7 Media Library Toolbar

Media Library Toolbar Options	
• Add To Media Library:	Click to access the Select Type sub menu to select the type of media you want to add (Add CD, Add DVD, Add Radio Station, Add TV Station). Select a type from this menu to open the appropriate Add <Media Type> to Library dialog.
• Remove Entry From Media Library:	Removes the selected disc from the Media Library. Note that if you select to remove an Artist folder (in the CD tab of the Media Library window), all CDs by that artist will be removed. The program will prompt you to verify this action before any media is removed from the Media Library.

Media Library Toolbar Options (Cont.)	
• Edit Properties:	Click to open the appropriate Edit <media type> In Library dialog, based on the type of media selected.
• Identify CD:	Initiates an attempt at identifying the CD in your PC's local CD drive.
• Manage Genres:	Opens the Genre Manager dialog, where you can add, rename or delete Genres (for CDs and DVDs) from the Media Library.
• Manage Categories:	Opens the Category Manager dialog, where you can add, rename or delete Categories (for Radio and TV stations) from the Media Library.



NOTE

*You can drag items from the Media Library window directly into your Preset Content Windows - see the Preset Files section on page 29 for details.*

### Media Library Window - CD tab

The CD tab of the Media Library window displays all CDs that have been added to the Media Library. This tab is available if you have either opened an existing Media Preset (\*.MXD) file, or selected to create a new Media Preset file (via options in the Welcome screen and Create New Preset File dialog).

- Music is sorted in the CD tab by Artist name. Click the "+" symbol next to any Artist name to expand the list to show all CD Titles by that artist that are in the Media Library.
- Click the "+" symbol next to any CD Title to expand the list to show the Genre and Summary items, as well as all of the Tracks contained in that CD. See Editing Disc/Station Properties.

You can drag-and-drop individual tracks or entire CDs from the Media Library window to the Media Preset Content Window. Each item dragged from the Media Library window takes up a single row in the Media Preset Content Window. For example, if you drop an entire CD onto a row in the Media Preset Content Window, the entire CD occupies a single row, and when that item is invoked via the Touch Panel (by the end-user), the CD will play in its entirety, based on the Tracks list it contains.

If you drop an individual track from a CD in the Media Library Bar to a row in the Media Preset Content Window, the entire disc is added to the Content Window and will played when selected.



NOTE

*If you drop an Artist folder onto a row in the Media Preset Content Window, all CD Titles in the Artist folder will be added.*

### Media Library Window - DVD tab

The DVD tab of the Media Library window displays all DVDs that have been added to the Media Library. This tab is available if you have either opened an existing Media Preset (\*.MXD) file, or selected to create a new Media Preset file (via the options in the Welcome screen and Create New Preset File dialog).

- DVDs are sorted in the DVD tab by DVD Titles. Click the "+" symbol next to any Title to expand the list to show all the Genre and Summary items, and the Chapter Info folder. See Editing Disc/Station Properties.
- Click the "+" symbol next to the Chapter Info folder to expand the list to show all of the chapters contained in that DVD.

You can drag-and-drop entire DVDs from the Media Library window to the Media Preset Content Window. Each DVD dragged from the Media Bar takes up a single row in the Media Preset Content Window.



NOTE

*Dropping individual chapters from a DVD onto the Media Preset Content Window is not supported. If you drop any chapter from a DVD into the Media Preset Content Window, the entire DVD is added.*

## Media Library Window - TV tab

The TV tab of the Media Library window displays all TV stations that have been added to the Media Library. The TV and Radio tabs are available if you have either opened an existing Station Preset (\*.PXD) file, or selected to create a new Station Preset file (via the options in the Welcome screen and *Create New Preset File* dialog).

- TV stations are sorted by Category. Each folder in the TV tab represents a different Category. Click the "+" symbol next to any Category folder to expand the list to show the stations contained within that folder.
- Click the "+" symbol next to any TV channel to expand the list to show the station (number), Genre, Image and Summary items.



NOTE

*The Category folders suffixed with "- [AMX]" are automatically added and maintained by AMX, and cannot be modified. These are provided by AMX to offer a quick-start to creating Station Presets using common stations. See the Managing Categories section on page 25 for details.*

## Media Library Window - Radio tab

The Radio tab of the Media Library window displays all Radio stations that have been added to the Media Library. The TV and Radio tabs are available if you have either opened an existing Station Preset (\*.PXD) file, or selected to create a new Station Preset file (via the options in the Welcome screen and *Create New Preset File* dialog).

- Radio Stations are sorted by Category.
- Click the "+" symbol next to any Radio station to expand the list to show the Station (number), Genre, Image and Summary items.

## Media Library Window - Search tab

The options in the Search tab of the Media Library window allow you search for entries in the Media Library. Enter a text string in the *Search For* field, select search filters as desired, and click the Search button. Search results are displayed in this tab (see Searching For an Entry in the Media Library).

## Media Library Window Context Menu

Right-click on any item in the Media Library window to access the Media Library window context menu:

Media Library Window Context Menu Options	
• Add Entry:	Click to open the Disc Type sub-menu, where you can specify the type of entry you want to add (CD, DVD, Radio Station or TV Station). Select a type from this menu to open the appropriate Add <Media Type> to Library dialog.
• Remove Entry:	Removes the selected entry from the Media Library. The program will prompt you before permanently removing the selected title from the Media Library. See Removing an Entry From the Media Library.
• Manage Genres (CD and DVD tabs only):	This option opens the Genre Manager dialog, where you can manage the Genres available in the Media Library. See Managing Genres for details.
• Manage Categories (Radio and TV tabs only):	This option opens the Category Manager dialog, where you can manage the Categories available in the Media Library. See Managing Categories for details.
• Edit Properties:	Opens the appropriate Edit <media type> in Library dialog where you can view and edit the information entered for the selected disc/station.

## Preset Content Windows

### Media Preset Content Windows

When you create a new Media Preset file (see [Creating a New Media Preset File](#)), a new Media Preset Content window is opened (FIG. 8).

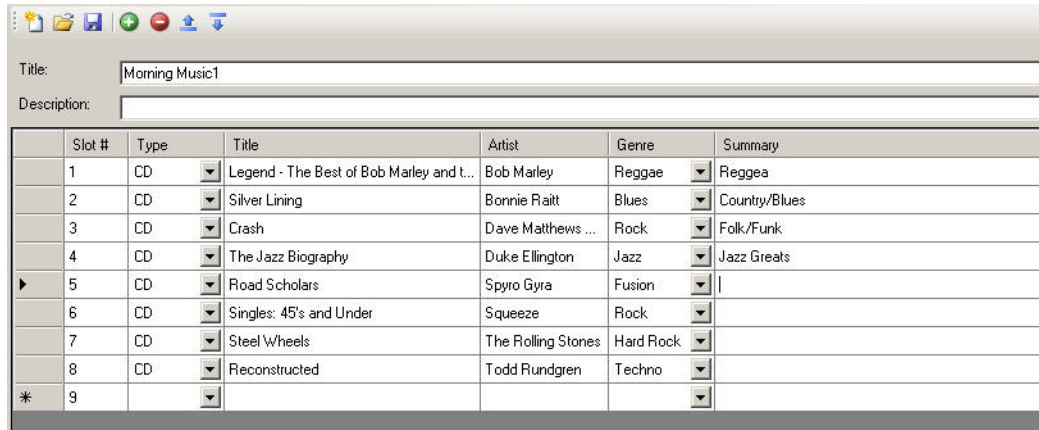


FIG. 8 Media Preset Content Window

Use these windows to add the discs that are to be included in this database. Media Preset Content windows consist of a table with the following columns:

Media Preset Content Windows	
• Slot#:	The numbered rows represent the number and order of the Discs in this Preset file (read-only).
• Type:	This column indicates the type (CD or DVD) of each disc.
• Title:	This column indicates each discs' title. To enter a disc title, click inside the Title cell and type the title as you want it to appear for selection.
• Artist:	This column indicates the artist name associated with each disc. For CDs, this would be the name of the artist or band, and for DVDs it could be used for the Director, key actors, or whatever best fits your needs. Remember that DVDs (as well as CDs) can be searched by Artist, so give some thought to how to best use this field.
• Genre:	This column indicates the genre name associated with each disc.
• Summary:	Enter a text description of the CD or DVD in this text field.

### Station Preset Content Windows

When you create a new Station Preset, a new Station Preset Content window is opened (FIG. 9).

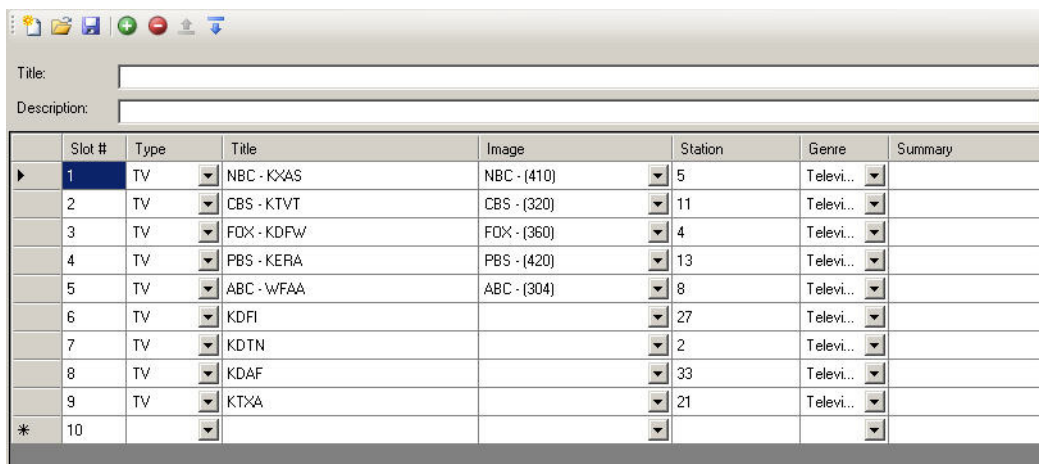


FIG. 9 Station Preset Content Window

Use these windows to add the stations that are to be included in this Preset file. Station Preset Content windows consist of a table, with the following columns:

Station Preset Content Windows	
• Slot#:	The numbered rows represent the number and order of the Stations in this Preset file (read-only).
• Type:	This column indicates the type (Radio or TV) of each station.
• Title:	This column indicates each station's title. Click inside this cell to edit if necessary.
• Image	This column indicates the logo image associated with each station. To associate a logo with a station, click inside the Image cell and select the image with a name that matches the station you are adding. See <i>Creating Custom Images for Radio and TV Stations</i> .
• Station	This column indicates the station number associated with each Station Preset. Click inside this cell to edit if necessary.
• Genre:	This column indicates the genre name associated with each station.
• Summary:	Enter a text description of the station in this text field.

### Preset Toolbar

The Preset Toolbar provides shortcuts to basic file and edit functions:

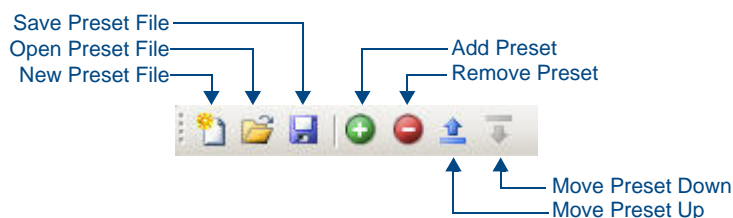


FIG. 10 Media Library Toolbar

Preset Toolbar Options	
• New Preset File:	Creates a new Preset File. The program will prompt you to specify the type (Media or Station), via the <i>Create New Preset File</i> dialog.
• Open Preset File:	Opens an existing Preset file (*.MXD or *.PXD) via the <i>Open Existing Preset File</i> dialog.
• Save Preset File:	Saves the current Preset file.
• Add Preset:	Adds a new (empty) entry to the active Preset File window, in the row above the selection.
• Remove Preset:	Removes the selected entry from the active Preset File window.
• Move Preset Up:	Moves the selected entry up one position in the list.
• Move Preset Down:	Moves the selected entry down one position in the list.

### Preset Content Window Context Menu

Right-click on a selected item in the Media or Station Preset Content Windows to access the following context menu:

Preset Content Window Context Menu Options	
• Add Preset	Adds an empty slot or preset to the bottom of the list.
• Remove Preset	Removes a selected item from the list.
• Move Preset Up / Move Preset Down	Moves the selected item up or down one row in the list.



# The Media Library

## Overview

The Media Library represents a repository of all entries (CDs, DVDs, TV and Radio stations) that have been added to Preset Editor.

- The Media Library is displayed in the Media Library window.
- Once a CD or DVD is in the Media Library, it is available to be added to one or more Media Preset files.
- Once a TV or Radio station is in the Media Library, it is available to be added to one or more Station Preset files.

## Working With the Media Library

In order for any item (CD, DVD, TV or Radio Station) to be added to a Preset file (Media Preset or Station Preset), it must first be added to the Media Library, as described in the following sections:

### Adding a CD to the Media Library using CDDB

Preset Editor uses an online media identification service to automatically identify CDs for addition to the Media Library.



*You must have an active Internet connection to use the Identify CD feature.*

1. Insert the CD in your PC's drive.



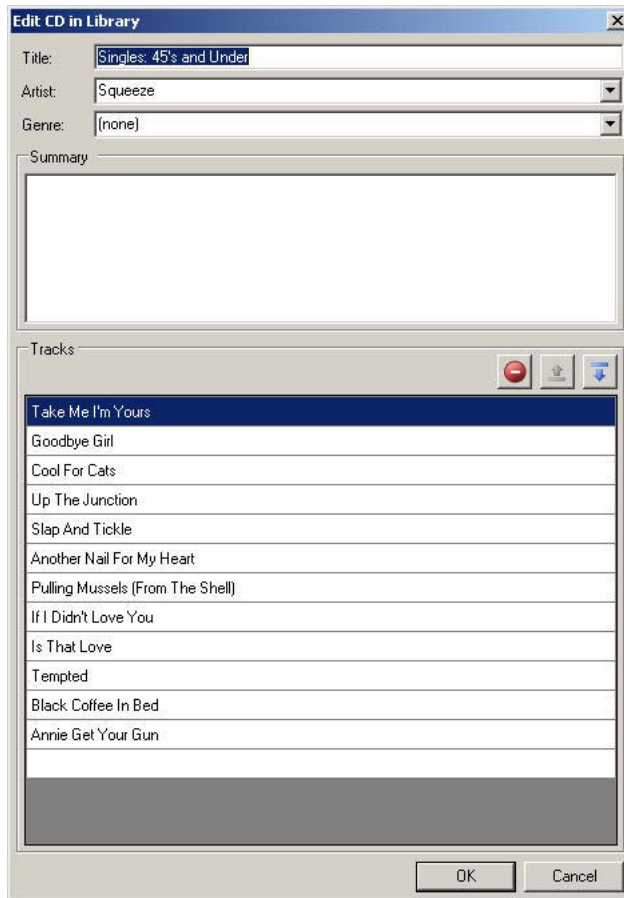
*Hold down the Shift key to prevent the disc from auto-playing, if necessary.*

2. Click the **Identify CD/DVD** toolbar button to initiate the identification of this disc.
  - Alternatively, select **Media Library > Identify CD/DVD** (or press Ctrl+I).
  - In some cases, the disc reports more than one possible match. If this happens, the *FreeDB Query Results* dialog is displayed - select the correct match from the list of possible matches and click **OK** to continue.
  - If you receive the message: "*Failed to retrieve CDDB sites!*", you may need to configure your CDDB options, via the *FreeCDDB Settings* dialog (see Configuring FreeCDDB Options).



*In some cases, discs may not be identified via the Identify CD/DVD option (if they do not exist on the CDDB servers, or if you do not have access to the CDDB servers). In these cases, you can enter disc information manually. See Adding a CD to the Media Library Manually for details.*

3. When the disc is identified, the *Edit CD in Library* dialog is displayed, where you can edit the CD information (if necessary), and add this CD to the Media library (FIG. 11):



**FIG. 11** Edit CD In Library dialog

4. Review the information in this dialog, edit if necessary, and click **OK** to enter the CD into the Media Library.

The CD is added to the Media Library, and is indicated in the Media Library window (CD tab).

Once a CD is listed in the Media Library Bar, it is available to be added to one or more Media Preset files.

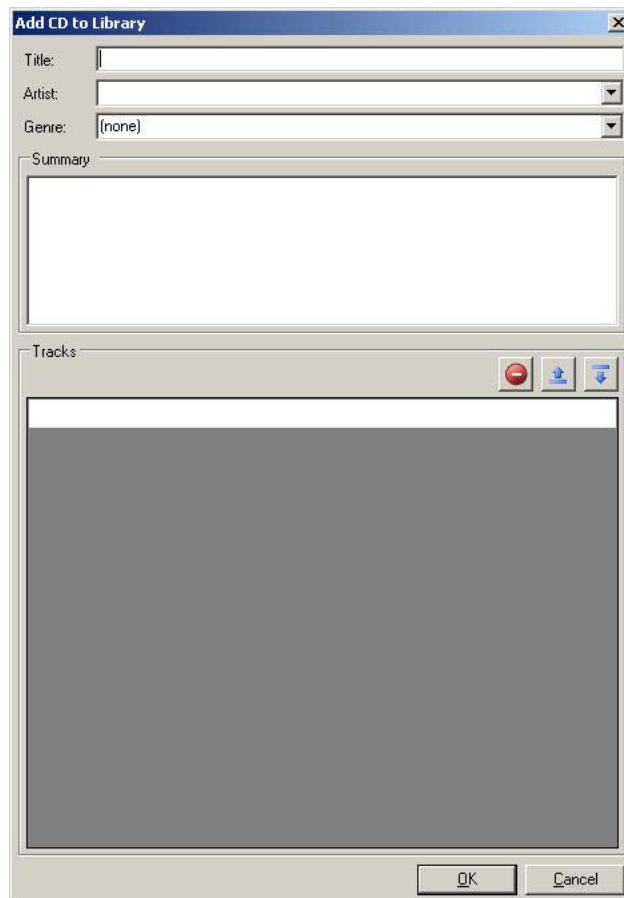


## Adding a CD to the Media Library Manually

While Preset Editor uses an online media identification service to automatically identify CDs for addition to the Media Library, in some cases, discs may not be identified via the Identify Disc option (if they do not exist on the CDDDB servers, or if you do not have access to the CDDDB servers).

In these cases, you can enter the disc information manually:

1. Select **Media Library > Add Entry To Media Library > CD** to open the *Add CD To Library* dialog (FIG. 12).



**FIG. 12** Add CD To Library dialog

Alternatively, select **Add CD** from the Add To Media Library toolbar button drop-down menu (FIG. 13).



**FIG. 13** Add CD (Add To Media Library toolbar button drop-down menu)

2. Enter the disc information as desired:



**NOTE**

*The information in all fields in this dialog is optional, but it is recommended that you enter as much information as possible to facilitate searches and disc information displays.*

- You can enter multiple Artist and Genre names, separated by commas.
- Note that DVDs are organized in the Media Library window by Artist name.

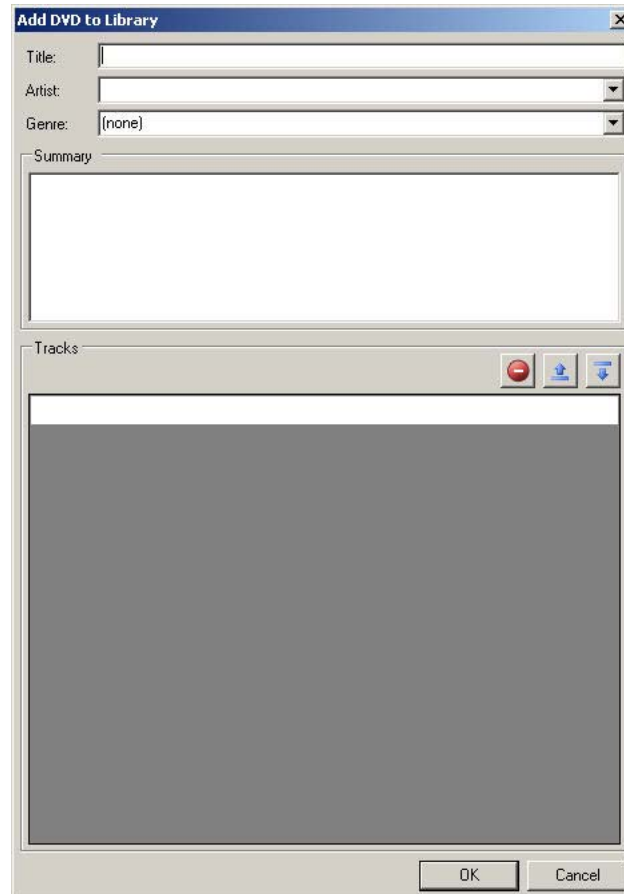
- Enter a text description of the disc in the *Summary* field.
3. Add tracks (song titles):
    - a. Place the cursor in an available row of the *Tracks* table.
    - b. Type the title of the Track and press **Enter**. Note that when you begin typing, an additional track row is automatically added to the table.
    - c. Place the cursor in the next available row to add another Track (title), and repeat this process until all tracks have been added.
      - Use the **Up** and **Down** arrow buttons to re-sort the Track list if necessary.
      - To remove a Track, select the title and click the **Remove** button.
  4. Click **OK** to enter the disc into the Media Library.
    - The disc is added to the Media Library and listed in the Media Library window (CD tab).
    - Double-click on the *Artist* name to expand a list of all CD titles currently in the Media Library associated with that artist.

Once a CD is listed in the Media Library window, it is available to be added to one or more Media Preset files.

## Adding a DVD to the Media Library

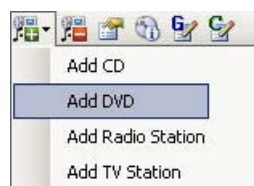
Unlike CDs, DVDs do not utilize an online database for disc identification. All DVDs must be manually added to the Media Library:

1. Select **Media Library > Add Entry To Media Library > DVD** to open the *Add DVD To Library* dialog (FIG. 14).



**FIG. 14** Add DVD To Library dialog

Alternatively, select **Add DVD** from the Add To Media Library toolbar button drop-down menu (FIG. 15).



**FIG. 15** Add DVD (Add To Media Library toolbar button drop-down menu)

2. Enter the disc information as desired:



**NOTE**

*The information in all fields in this dialog is optional, but it is recommended that you enter as much information as possible to facilitate searches and disc information displays.*

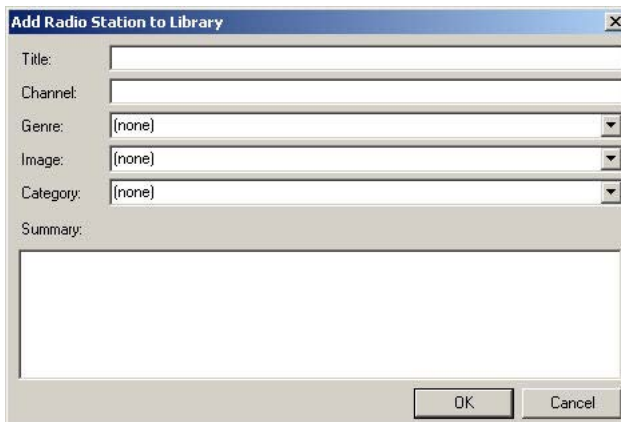
- Enter the disc *Title*, *Artist* and *Genre* information in the top three fields.  
Once you have added at least one Artist and one Genre name, those names are available for selection via the drop-down menus next to these fields for future disc additions.  
You can enter multiple Artist and Genre names, separated by commas.  
Note that DVDs are organized in the Media Library window by Artist name.
  - Enter a text description of the disc in the *Summary* field.
3. Add tracks (chapter titles):
    - a. Place the cursor in an available row of the *Tracks* table.
    - b. Type the title of the Track and press **Enter**. Note that when you begin typing, an additional track row is automatically added to the table.
    - c. Place the cursor in the next available row to add another Track (title), and repeat this process until all tracks have been added.
      - Use the **Up** and **Down** arrow buttons to re-sort the Track list if necessary.
      - To remove a Track, select the title and click the **Remove** button.
  4. Click **OK** to enter the disc into the Media Library.
    - The disc is added to the Media Library and listed in the Media Library window (DVD tab).
    - Double-click on the Artist name to expand a list of all DVD titles currently in the Media Library associated with that artist.

Once a DVD is listed in the Media Library window, it is available to be added to one or more Media Preset files.

## Adding Radio Stations to the Media Library

All Radio Stations must be manually added to the Media Library:

1. Select **Media Library > Add Entry To Media Library > Radio Station** to open the *Add Radio Station To Library* dialog (FIG. 16).



**FIG. 16** Add Radio Station To Library dialog

Alternatively, select **Add Radio Station** from the Add To Media Library toolbar button drop-down menu (FIG. 17).



**FIG. 17** Add Radio Station (Add To Media Library toolbar button drop-down menu)

2. Enter the Radio Station's information as desired.



*The information in all fields in this dialog is optional, but it is recommended that you enter as much information as possible to facilitate searches and disc information displays.*

- Enter the Radio Station's *Title*, *Channel* and *Genre* information in the top three fields. Once you have added one or more Genre name, those names are available for selection via the drop-down menu next to this field for future channel additions. You can enter multiple Genre names, separated by commas. Note that Radio Stations are organized in the Media Library window by Title name.
  - Enter a text description of the disc in the *Summary* field.
3. Select a channel icon to associate with this Radio Station from the *Image* drop-down. See *Creating Custom Images for Radio and TV Stations*.
  4. Enter a *Category* to which this station will be added. Once you have added at least one Category name, those names are available for selection via the drop-down menus next to these fields for future additions. See the *Managing Categories* for details.
  5. Enter a text description of the channel in the *Summary* field.
  6. Click **OK** to enter the Radio Station into the Media Library. The Radio Station is added to the Media Library and listed in the Media Library window (Radio tab). Once a Radio Station is listed in the Media Library window, it is available to be added to one or more Station Preset files.

## Adding TV Stations to the Media Library

All TV Stations must be manually added to the Media Library:

1. Select **Media Library > Add Entry To Media Library > TV Station** to open the *Add TV Station to Library* dialog (FIG. 18).

**FIG. 18** Add TV Station To Library dialog

Alternatively, select **Add TV Station** from the Add To Media Library toolbar button drop-down menu (FIG. 19).



**FIG. 19** Add TV Station (Add To Media Library toolbar button drop-down menu)

2. Enter the TV Station's information as desired.



*The information in all fields in this dialog is optional, but it is recommended that you enter as much information as possible to facilitate searches and disc information displays.*

- Enter the TV Station's *Title*, *Channel* and *Genre* information in the top three fields.  
Once you have added one or more Genre name, those names are available for selection via the drop-down menu next to this field for future station additions.  
You can enter multiple Genre names, separated by commas.  
Note that TV Stations are organized in the Media Library window by Title name.
  - Enter a text description of the disc in the *Summary* field.
3. Select a channel icon to associate with this TV station from the *Image* drop-down. See the *Creating Custom Images for Radio and TV Stations* section on page 19 for details.
  4. Enter a *Category* to which this station will be added.  
Once you have added at least one Category name, those names are available for selection via the drop-down menus next to these fields for future additions. See the *Managing Categories* section on page 25 for details.
  5. Enter a text description of the station in the *Summary* field.
  6. Click **OK** to enter the TV Station into the Media Library.  
The TV Station is added to the Media Library and listed in the Media Library window (TV tab).  
Once a TV Station is listed in the Media Library window, it is available to be added to one or more Station Preset files.

## Creating Custom Images for Radio and TV Stations

Custom images can be associated with Station Presets, for further customization of your Station Preset buttons. Working with custom images for Presets requires the use of TPDDesign4.

### Load The Image Into An Open Slot

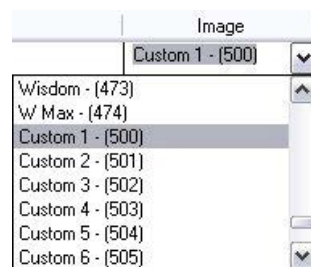
1. In TPDDesign4: Select **Panel > Resource Manager** to access the Resource manager dialog.
2. Open the **Slots** tab.
3. Select the slot to which you want to add a custom image (in the range of **500 - 524**).
4. Click the **Import** button.
5. Locate and select the graphic that you want to apply to this slot.

By default, TPD4 projects have 500 slots available. Therefore, to utilize slot numbers 500 - 524, you'll need to add at least 24 slots to the TPD4 project. This is done via the *Maximum Number of Image Slots for Panel* dialog (**Panel > Set Maximum Icon Slots**).

- Reserved Images occupy slots **300 - 474**
- Custom Images use slots **500 - 524**

### Add the Image to a Station Preset

1. In Preset Editor: Open the Station Preset (\*.PXD) file open that contains the Preset(s) to which you want to add custom icon graphics.
2. Select the **Slot #** for a channel that will use a custom icon.
3. Click inside the **Image** column, to access a drop-down list of Station Preset icons.
4. Scroll to the bottom of the list to find the **Custom 1 (500) - Custom 25 (524)** entries (FIG. 20):



**FIG. 20** Station Preset icons

- The *Custom #* (1-25) indicates the custom image number used by VA.
  - The number in parenthesis that follows each image number (500-524) indicates the icon slot number that TPD4 will use to associate the custom image to the preset button (in the Resource Manager - Slots tab).
5. Select an unused Custom Image entry, and make note of the icon slot number. The image that occupies the selected icon slot number (in TPD4's Resource Manager) will be applied to this Preset button. For example, if you select "Custom 1 - (500)" from the Image drop-down in Preset Editor, the image that has been loaded into slot 500 will be applied to this Preset Button.

## Editing Disc/Station Properties

You can edit the properties for any entry in the Media Library, via options in the *Edit <entry type> In Library* dialog.

- Click to select the entry that you want to edit in the Media Library window (CD, DVD, Radio or TV tab).
  - To access the CD & DVD tabs, select **File > New** to open the *Create New Preset File* dialog, and select *Media Preset - CDs and DVDs (\*.mxd)*.
  - To access the TV & Radio tabs, select **File > New** to open the *Create New Preset File* dialog, and select *Station Preset - TV stations and Radio stations (\*.pxd)*.
- Click the Properties toolbar button (or select **Media Properties > Edit Properties**, or click **Ctrl+P**) to access the appropriate *Edit <entry type> In Library* dialog (based on the type of entry selected), pre-populated with the selected entry's information (FIG. 21).

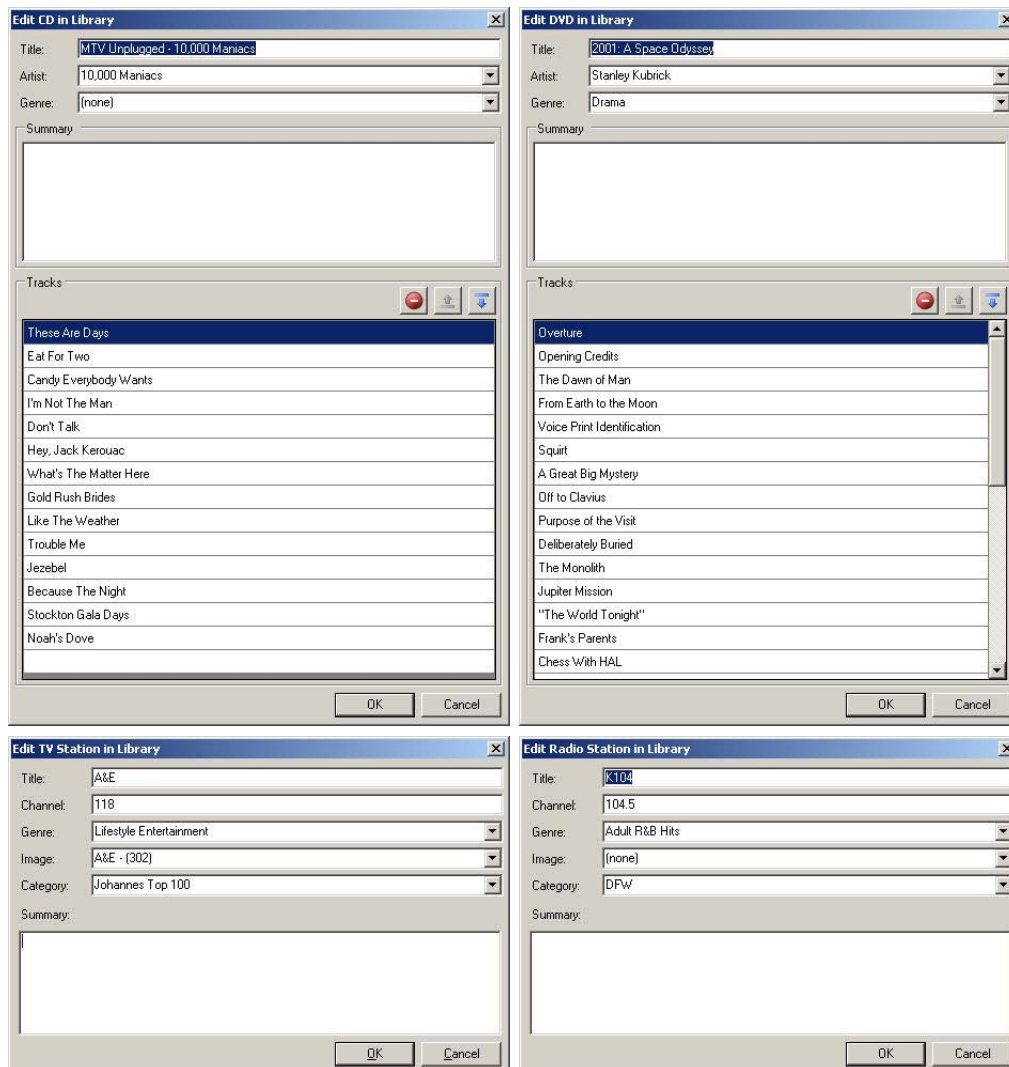


FIG. 21 Edit <entry type> In Library dialogs



NOTE

You can access these dialogs by right-clicking on an entry in the Media Library window and selecting *Properties* from the Media Library window context menu.

- Edit the properties as desired, and click **OK** to save your changes.



## Removing an Entry From the Media Library

To remove an item (CD, DVD, TV or Radio station) from the Media Library,

1. In the Media Library window, select the item that you want to remove.
2. Select **Media Library > Remove Entry From Media Library** (or click the toolbar button, or press Ctrl+Delete).
  - When removing an Artist entry from the Media Library window, all CDs associated with that artist will be removed from the Media Library.
  - To delete a single CD, expand the Artist entry in the Media Library window and select the specific CD that you want to remove.
3. The program will prompt you to verify this action before the item is removed (FIG. 22):



FIG. 22 Delete Confirmation dialog



NOTE

*If you remove discs that are included on one or more Media Preset files from the Media Library, those discs will remain in the Media Preset files to which they were added. However, they will not be available to add to other Media Preset files.*

To remove an individual Track from a disc, use the Delete option in the *Edit CD In Library* dialog (FIG. 23).

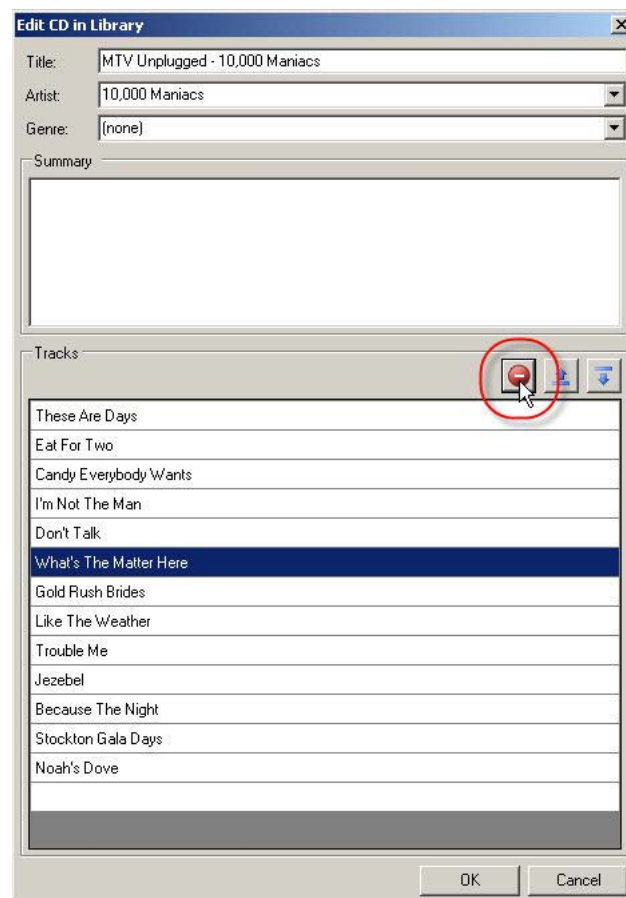
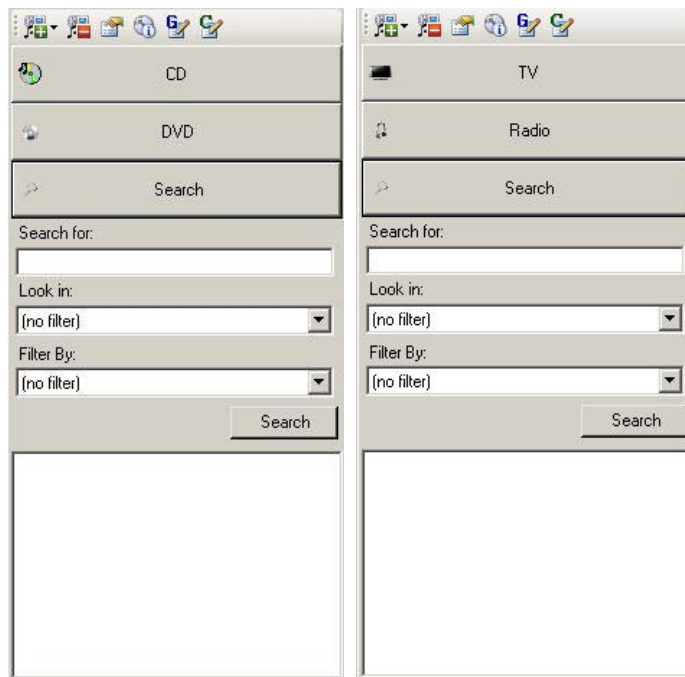


FIG. 23 Edit CD In Library dialog

## Searching For an Entry in the Media Library

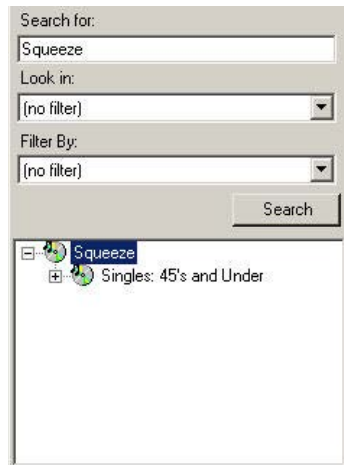
To search for any item in the Media Library, click the **Search** tab of the Media Library Bar to access the search fields (FIG. 24):



**FIG. 24** Media Library Bar - Search tab

1. Open a Media or Station Preset file, and click on the **Search** tab in the Media Library window.
2. Enter a text string in the **Search for** field.
3. Optionally, apply the filters to your search:
  - Click the down-arrow in the Look In field to select a particular information field to which you wish to limit the search (Artist, Album, Track Title).
  - Click the down-arrow in the Filter By field to select a particular type to which you wish to limit the search (CD, DVD, Radio or TV).
  - The default setting is "no filter".
4. Click the **Search** button to initiate the search.

The results of your search are listed (in order of their relevance) in the window at the bottom of the Search tab (FIG. 25):



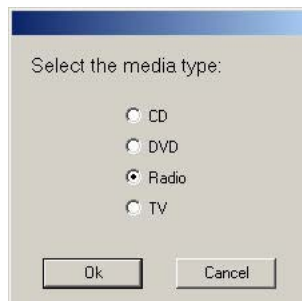
**FIG. 25** Search tab showing example Search Results

You can drag-and drop the results of a Search from the Search tab into a Media Preset Content Window, or in the case of a Radio or TV station, in to a Station Preset Content Window.

## Adding Multiple Entries to Media Library

The **Add Multiple Entries to Media Library** option in the Media Library menu allows you add multiple entries of a any type to the Media Library.

1. Select **Media Library > Add Multiple Entries to Media Library** to invoke the *Select the media type* dialog (FIG. 26).



**FIG. 26** Select the media type dialog

2. Select the type of entry to add first (*CD, DVD, Radio Station or TV Station*).
3. Click **OK** to open the appropriate *Add <Media Type> to Library* dialog.
4. Fill in the information and click **OK** to close the *Add <Media Type> to Library* dialog and return to the *Select Media Type* dialog to repeat the process as desired.

## Managing Genres

Click the Manage Genres toolbar button to open the *Genre Manager* dialog. This dialog is separated into four tabs, representing the four types of items that can be added to Media and Station Preset files. Each tab lists the genres available to each of the preset types.

### Adding a Genre

1. Select **Media Library > Manage Genres** (or click the Genre Manager toolbar button, or click **Ctrl+G**) to open the to access the *Genre Manager* dialog (FIG. 27).

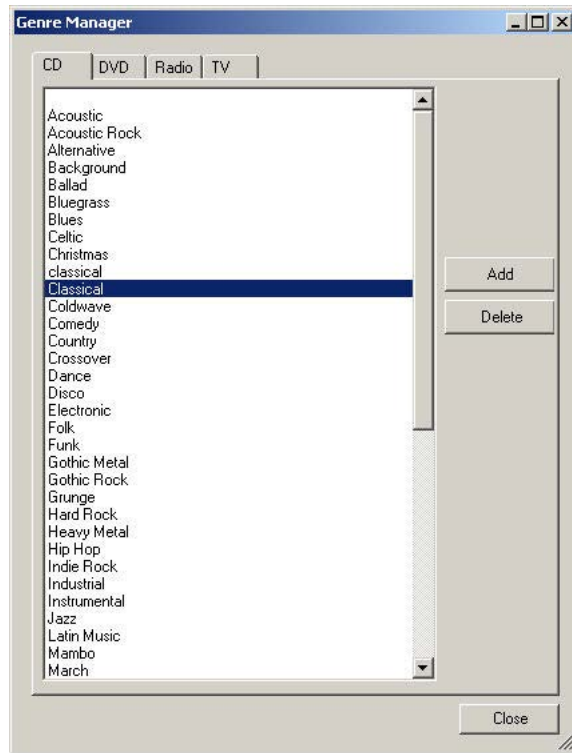


FIG. 27 Genre Manager dialog

2. Select the tab that represents the type of preset for which you want the Genre to be available (*CD*, *DVD*, *Radio* or *TV*).
3. Click the **Add** button. This invokes the *Add a New Genre* dialog (FIG. 28).

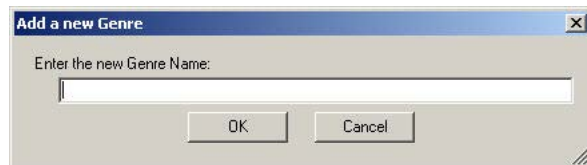


FIG. 28 Add a New Genre dialog

4. Type the new Genre name in the text field provided, and click **OK**.  
The new Genre is added to the bottom of the list, in the active tab. Once added, it is available for selection from the Genre drop-down for that type of item in a Media Preset or Station Preset Content window.
5. Repeat this process as necessary, click the **Close** button when finished to close this dialog.

## Removing a Genre

1. Select **Media Library > Manage Genres** (or click the Genre Manager toolbar button, or click **Ctrl+G**) to open the to access the *Genre Manager* dialog.
2. Select the tab that represents the type of preset from which you want to remove a Genre.
3. Select the Genre that you want to remove from the list of Genres.
4. Click the **Delete** button.
5. When finished, click the **Close** button.

## Managing Categories

*Categories* apply only to Radio and TV stations, and allow you to add an entire set of stations to a Station Preset file quickly and easily. Use the Category Manager dialog to manage the Categories available in the Media Library. Click the Manage Categories toolbar button to open the Category Manager dialog.

### Pre-Defined ("- [AMX]") Categories

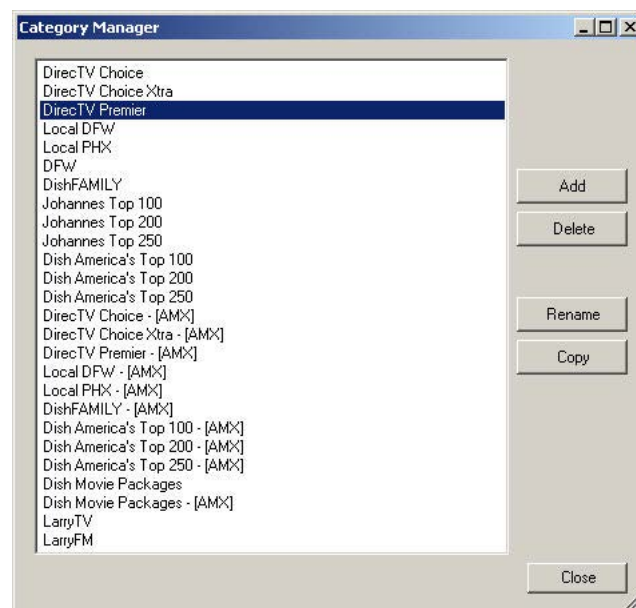
There are several pre-defined Categories available for selection in Preset Editor (for example, the Category named "Dish America's Top 250 - [AMX]" is a pre-defined Category with 250 popular TV stations used by Dish America customers).

Category folders in the Media Library Bar that are suffixed with "- [AMX]" are automatically added and maintained by AMX, and cannot be modified. These are provided by AMX to offer a quick-start to creating Station Presets using common stations.

However, you can create new Categories based on predefined AMX Categories, from scratch or via the Copy feature.

### Adding a Category

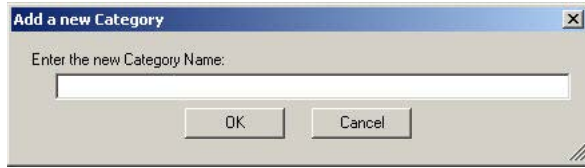
1. Select **Media Library > Manage Categories** (or click the toolbar button, or press **Ctrl+T**) to access the *Category Manager* dialog (FIG. 29).



**FIG. 29** Category Manager dialog

2. Click the **Add** button to invoke the *Add a New Category* dialog (FIG. 30).
3. Type the name that you want to assign to the new Category and press **OK**. The new Category is added to the bottom of the list (in the Category Manager dialog).

Alternatively, you can create a new category by typing a new name in the Category field of the Add TV Station to Library dialog.



**FIG. 30** Add a New Category dialog

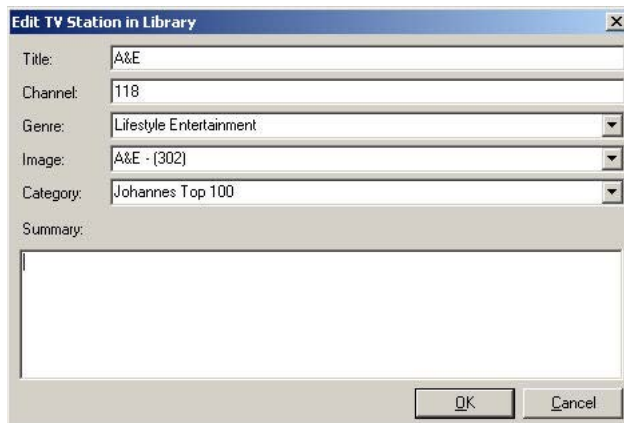


NOTE

The new Category will not appear in the Media Library window (Radio and/or TV tabs) until at least one station is assigned to it.

### Assigning a TV or Radio Station To The New Category

1. Select a TV or Radio station in the Media Library window and select **Media Library > Edit Properties** (or click the toolbar button, or press Ctrl+P) to access the *Edit <TV Station or Radio Station> In Library* dialog (FIG. 31).



**FIG. 31** Edit <TV Station or Radio Station> In Library dialog

2. Click the down-arrow in the **Category** field to select from a drop-down menu of all Categories, including any that you have created.
3. Click **OK**.

### Removing a Category

1. Select **Media Library > Manage Categories** (or click the toolbar button, or press Ctrl+T) to access the *Category Manager* dialog.
2. Select the Category that you want to remove.
3. Click the **Delete** button.
  - If there are no stations associated with the selected Category, the program will simply prompt you to verify this action before the Category is deleted.
  - If there are one or more stations associated with the selected Category, the *Delete Category* dialog is invoked, to specify how to handle the stations that have been associated to the Category that you are about to delete:

Select **Delete the records** to delete the station(s) associated with this Category.

Select **Copy Records to new category. Select a category below:** to select a category from the list in this dialog to re-assign the station(s) to.
4. Click **OK** to close this dialog.

## Renaming Categories

1. Open the *Category Manager* dialog.
2. Select the Category that you want to rename.
3. Click the **Rename** button to invoke the *Rename Category* dialog (FIG. 32).

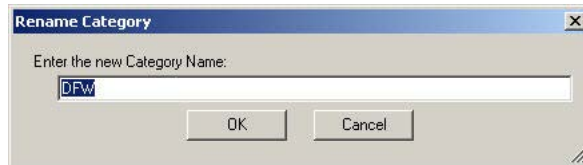


FIG. 32 Rename Category dialog

4. Enter the desired name for this Category, and click **OK**.

## Copying Categories

Use the **Copy** feature of the Category Manager to make a copy of an existing Category, and save it under a different name. Use this feature as a time-saver in cases where you need to create a custom Category that is similar to one that you already have. For example, you could make a copy of the "Dish America's Top 250" Category, and edit it to fit a particular customer's needs without having to manually add each station.

1. Open the *Category Manager* dialog.
2. Select the Category that you want to copy, and click the **Copy** button to invoke the *Copy to a New Category* dialog (FIG. 33).

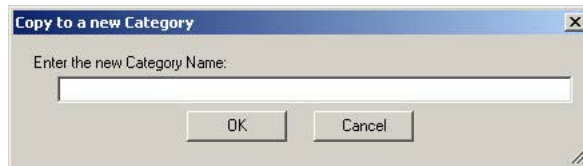


FIG. 33 Copy to a New Category dialog

3. Enter a name for the copied version of the Category, and click **OK**.
4. The new Category is added to the list.
5. At this point, you can add, remove and edit the contents of the Category as desired.





# Preset Files

## Media Preset Files (CDs and DVDs)

Media Preset Files (\*.mxd) contain a list of CDs and/or DVDs that corresponds to disc or slot numbers, for CD/DVD changers/players that have multiple slots (each one containing a CD or DVD). Media Preset files are used in VisualArchitect™ projects to represent content loaded on multi-slot CD/DVD changers/players.

Note that before a CD or DVD can be added to a Media Preset file, it must first be added to the Media Library: Once a CD or DVD is present in the Media library, it is available to be added to one or more Media Preset files.

## Creating a New Media Preset File

Media Preset (\*.MXD) files include disc (CD and DVD) titles, and associate a media preset with a button.



NOTE

Before you can add discs to a Media Preset file, the discs must first be present in the Media Library. See the Working With the Media Library section on page 11 for details.

To create a new Media Preset file:



NOTE

The example shown here shows adding Items from the CD tab. The steps for adding DVDs are basically the same. The primary difference is that while CDs are categorized in the Media Library window by Artist name, DVDs are categorized by Title.

1. In the Preset Content Window, click the **New Preset** toolbar button (FIG. 34) (or select **File > New**) to access the *Create New Preset File* dialog (FIG. 35).



FIG. 34 New Preset File toolbar button

2. Select **Media Preset - CDs and DVDs (\*.mxd)** (FIG. 35).

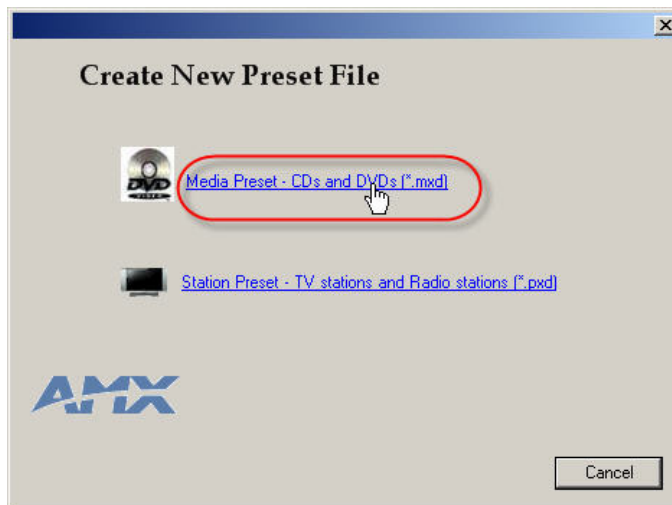


FIG. 35 Create New Preset File dialog

This selection opens a new (empty) Preset Content Window, with one empty slot (FIG. 36):

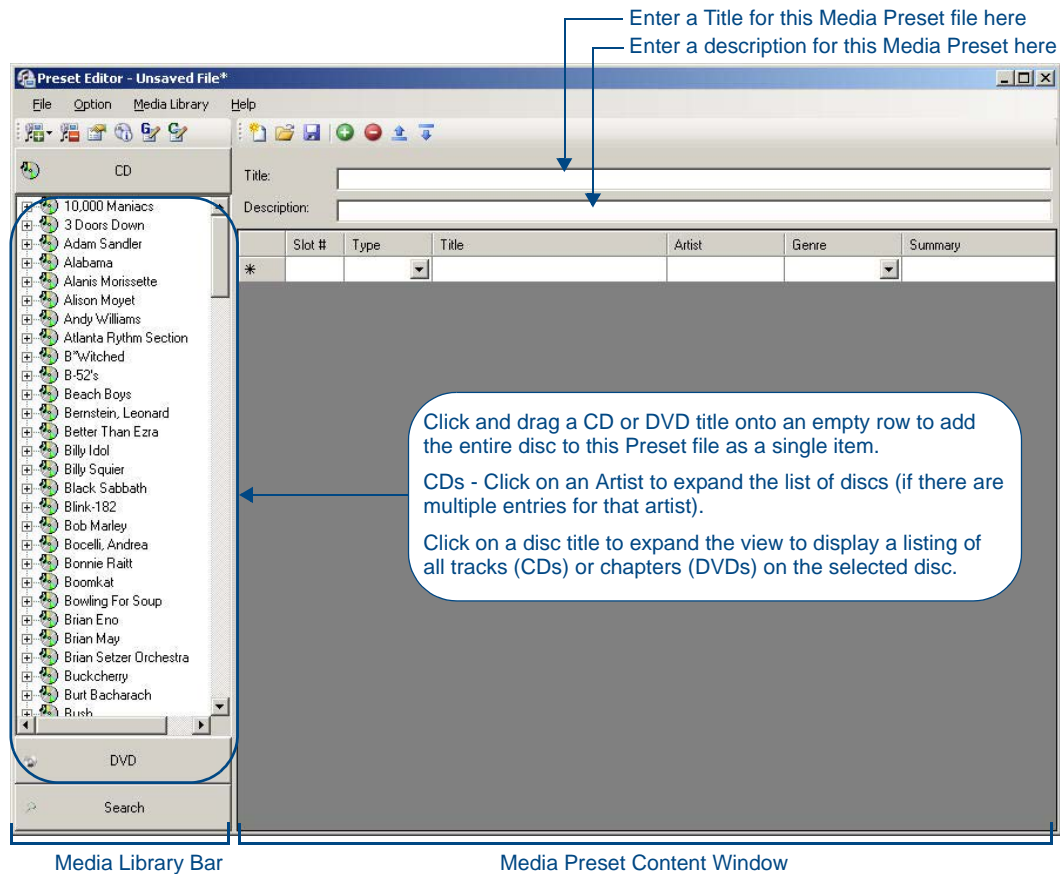


FIG. 36 Adding items to a new Media Preset file

3. Enter a *Title* and *Description* for this Media Preset file, if desired.
4. Click and drag Artist folders or individual discs (CDs and DVDs) from the Media Library Bar into empty slots in the Media Preset Content Window.

### Adding All Discs For a Selected Artist To The Preset File (CDs Only)

CDs are categorized in the Media Bar by *Artist* (name). Therefore, an Artist folder in the Media Bar may contain multiple CD titles. Click on an Artist name in the Media Bar to expand the list of CDs titles present in the Media Library for the selected Artist.

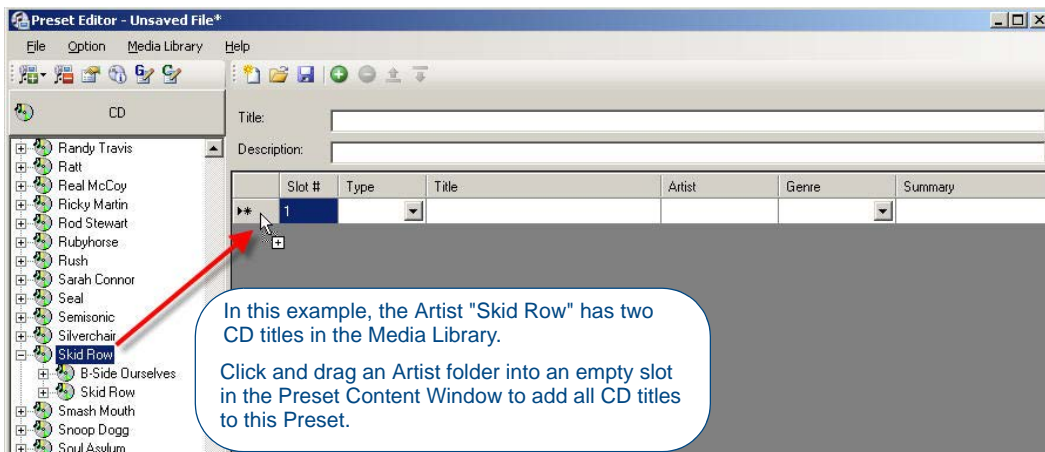
On the other hand, DVDs are categorized in the Media Bar by *Title*. Therefore, there is only entry in the Media Bar for each DVD Title in the Media Library. You can view the Chapter list for a DVD in the *Chapter Info* sub-folder (included with each DVD folder in the Media Bar).



NOTE

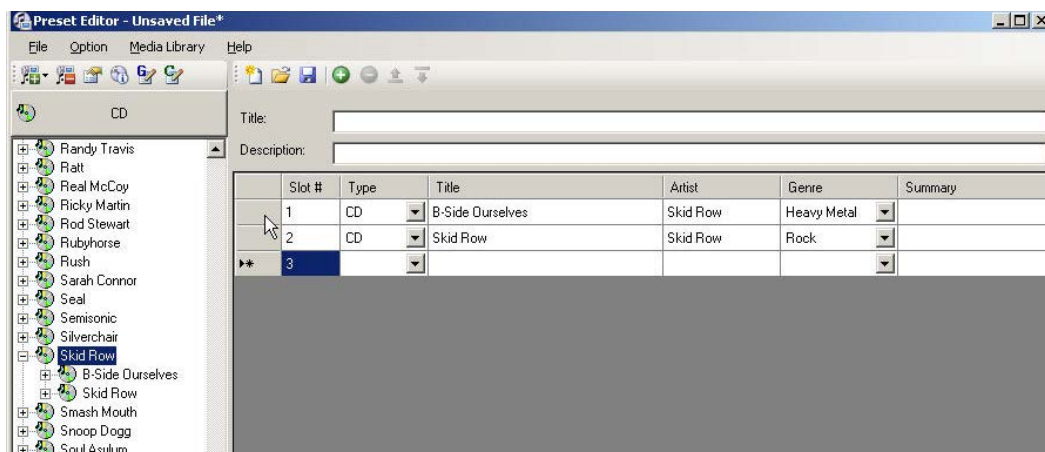
*Only entire discs (CDs and DVDs) can be added to Media Preset Files. Preset Editor does not support adding individual tracks/chapters. If you drag and drop an individual track or chapter into a Preset Content window, the entire disc is added to the Preset File.*

1. In the CD tab of the Media Library window, click and drag an Artist folder from the Media Bar to an empty slot in the Preset Content Window. The example in FIG. 37 shows that the Artist "Skid Row" has two CD titles in the Media Library.



**FIG. 37** Adding all CDs for an Artist to the Media Preset File

2. All CD titles for the selected Artist are added to the Preset File (FIG. 38):



**FIG. 38** Adding all CDs for an Artist to the Media Preset File

Note that each time you add an entry to the Preset File, a new empty row is automatically added, to allow you to add subsequent items.

## Adding a Selected Disc (CD or DVD) To a Media Preset File



Only entire discs (CDs and DVDs) can be added to Media Preset Files. Preset Editor does not support adding individual tracks/chapters. If you drag and drop an individual track or chapter into a Preset Content window, the entire disc is added to the Preset File.

1. Click and drag a disc (CD or DVD) folder from the Media Bar to an empty slot in the Preset Content Window (FIG. 39).

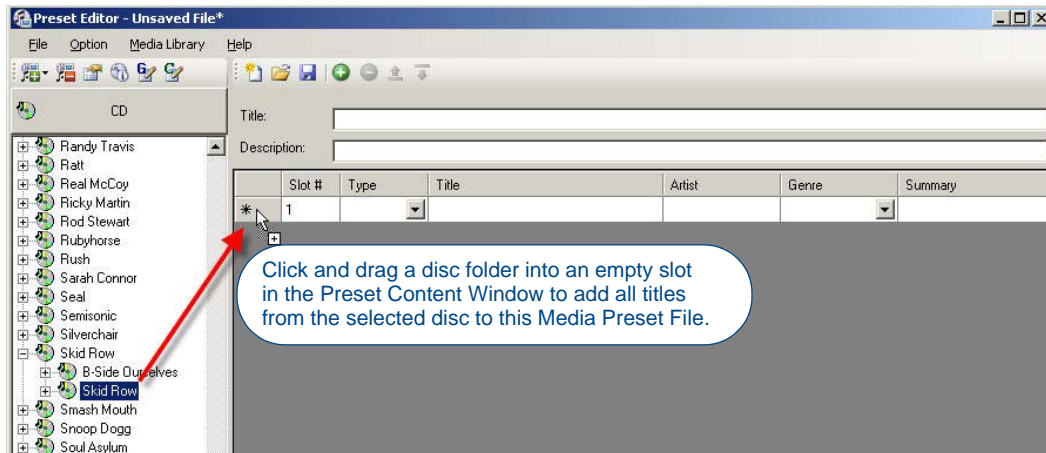


FIG. 39 Adding a disc (CD or DVD) to a Media Preset File - drag and drop

2. The selected disc is added to the Preset File (FIG. 40).

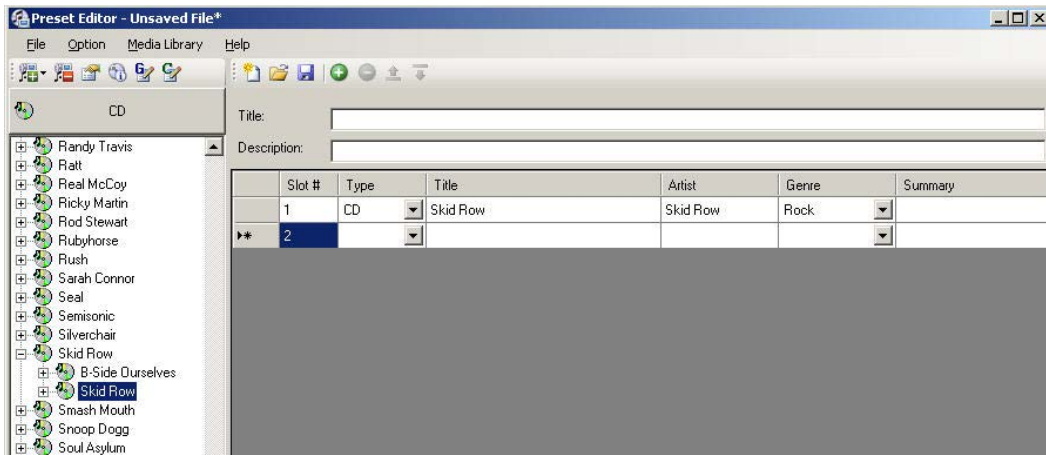


FIG. 40 Adding a disc (CD or DVD) to a Media Preset File

Note that each time you add an entry to the Preset File, a new empty row is automatically added, to allow you to add subsequent items.

The order of items in the Preset Contents window is the order in which they will be displayed on the Touch Panel. Use the Move Up and Move Down toolbar buttons to re-order the items as desired.

## Saving the Media Preset File

Click the *Save Preset File* toolbar button (or select **File > Save As**) to specify a name and target location for the new Media Preset file in the *Save Media Preset File* dialog (FIG. 41).

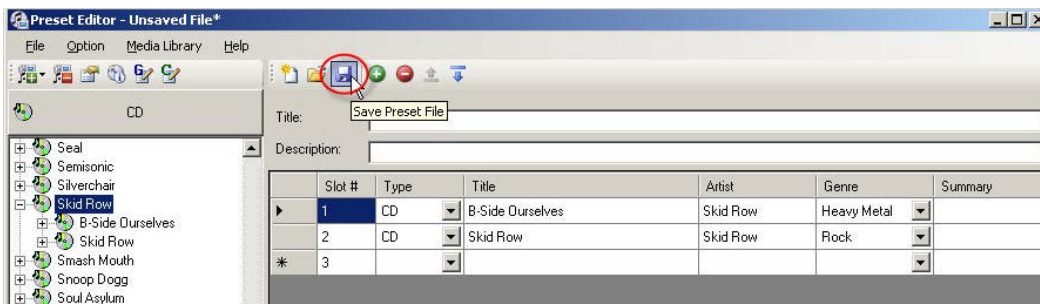


FIG. 41 Saving the Media Preset File

## Editing Media Preset Files

- To open an existing Media Preset (\*.MXD) file for editing, select **File > Open** to invoke the *Open Existing Preset File* dialog, and select **Media Database (\*.mxd)** in the *Files of Type* drop-down (FIG. 42):

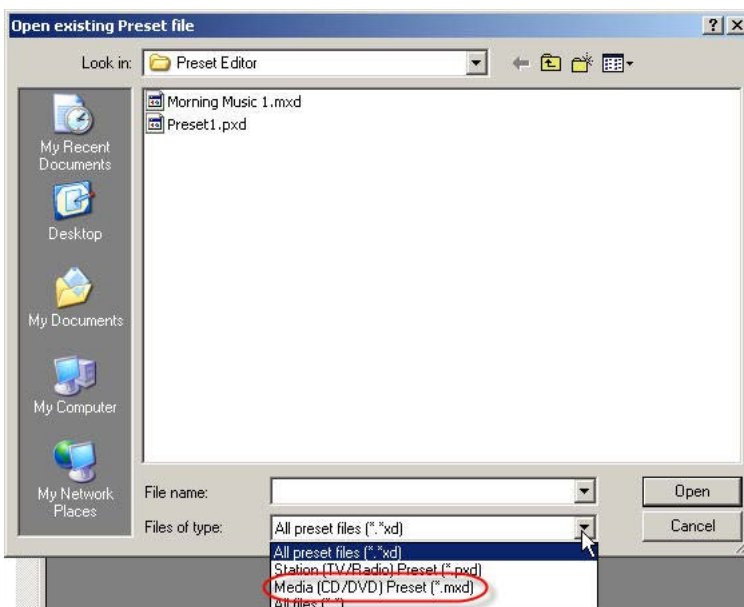


FIG. 42 Opening Existing Preset File dialog

- Select the MXD file that you want to edit, and click **Open**.
- The selected MXD file is opened and displayed in a Media Preset Content Window.
  - You can change the *Title* and *Description* for this Media Preset file in the text fields at the top of the dialog.
  - To re-order the discs in the list, select a disc and drag-and-drop it into a new position in the list (or use the Move Up and Move Down toolbar buttons).
  - To change the disc type (from CD to DVD or vice-versa), select a disc in the list, click in the *Type* column, and select the appropriate disc type (CD or DVD) from the drop-down.
  - To change the title of a selected disc, click in the *Title* column and edit the text as desired.
  - To change the Artist name associated with a selected disc, click in the *Artist* column. This will only change the artist name within this specific preset entry.
  - To change the Genre associated with a selected disc, click in the *Genre* column and select the appropriate genre from the drop-down list of all genre names currently in the Media Library.

- To change the summary information of a selected disc, click in the *Description* column and edit the text as desired.
4. Click the Save toolbar button (or select **File > Save**) to save your changes.

### Removing a Disc From a Media Preset File

1. Select the disc (CD or DVD) you want to remove in the Media Preset Content window.
2. Click the Remove Preset toolbar button (FIG. 43).



**FIG. 43** Removing a CD From a Media Preset File



**NOTE** Removing a disc from a Media Preset file does not delete it from the Media Library. It will still be available for adding to other Media Preset files. To permanently delete a disc from the Media Library, select the disc in the Media Library Bar and select **Media Library > Remove Entry From Media Library**.

## Station Preset Files (TV and Radio Stations)

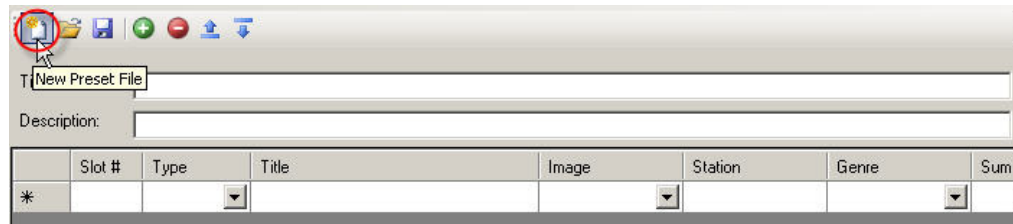
Station Preset files (\*.PXD) contain a list of station presets. Each preset corresponds to a TV or radio station. Station Preset files are used in VisualArchitect™ projects to represent station presets for TV and radio receivers.



*Before you can add TV or Radio Stations to a Station Preset file, the stations must first be present in the Media Library. See the Working With the Media Library section on page 11 for details.*

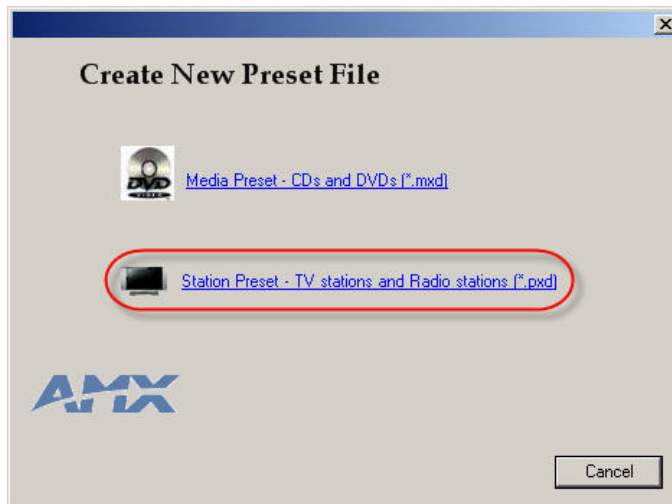
## Creating a New Station Preset File

1. In the Preset Content Window, click the **New Preset** toolbar button (FIG. 44) (or select **File > New**) to access the *Create New Preset File* dialog (FIG. 45).



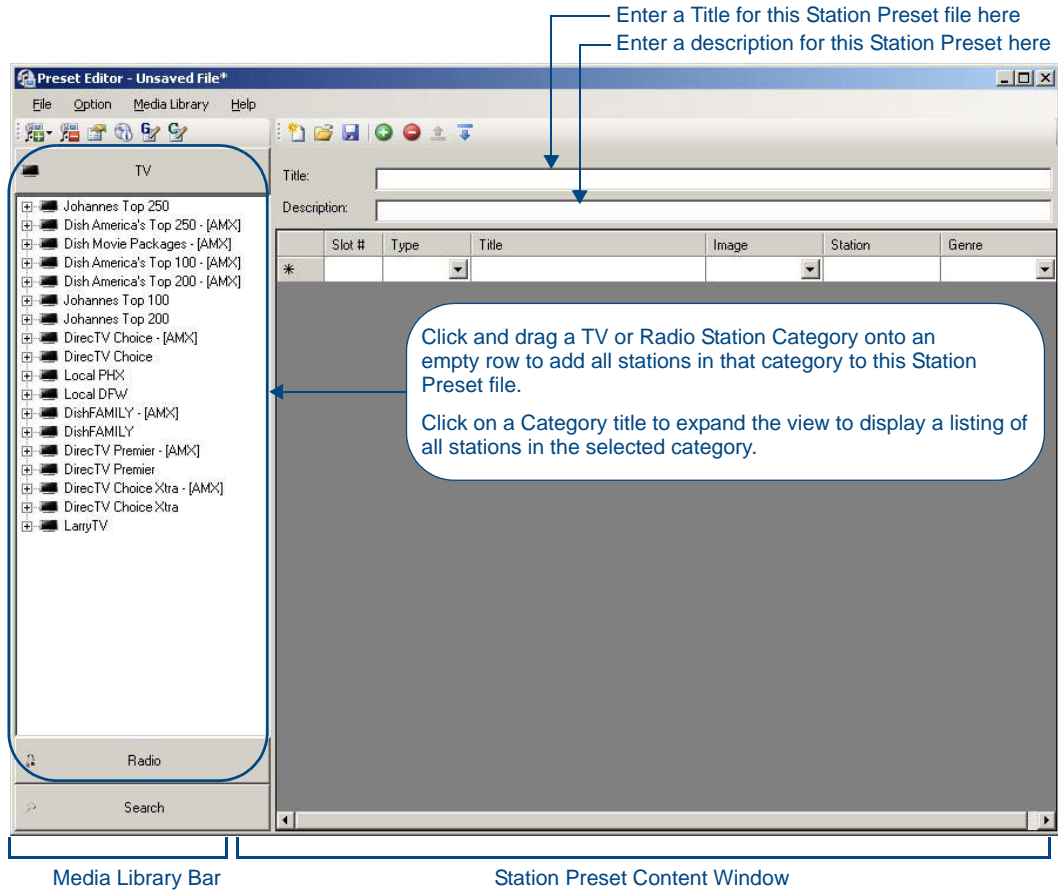
**FIG. 44** New Preset File toolbar button

2. Select **Station Preset - TV stations and radio stations (\*.pxd)** (FIG. 45).



**FIG. 45** Create New Preset File dialog

This selection opens a new (empty) Preset Content Window, with one empty slot (FIG. 36):



**FIG. 46** Adding items to a new Station Preset file

3. Enter a *Title* and *Description* for this Station Preset file, if desired.
4. Click and drag Category folders, and/or individual Stations from the Media Library Bar into empty slots in the Station Preset Content Window.
  - To add all TV stations contained within a Category (such as "Dish America's Top 250"), drag-and-drop the Station title folder from the Media Bar to the Media Preset Contents window. Each station contained within the selected folder is added to its own row in the Media Preset Contents window. In the case of "Dish America's Top 250", this would result in 250 items added to the Media Preset Contents window.
  - To add individual stations, expand the Station title folder in the Media Library window to show the stations, and drag-and-drop stations to the Station Preset Content window.



## Editing Station Preset Files

1. To open an existing Station Preset (\*.PXD) file for editing, select **File > Open** to invoke the *Open Existing Preset File* dialog, and select **Station Database (\*.pxd)** in the *Files of Type* drop-down (FIG. 42):

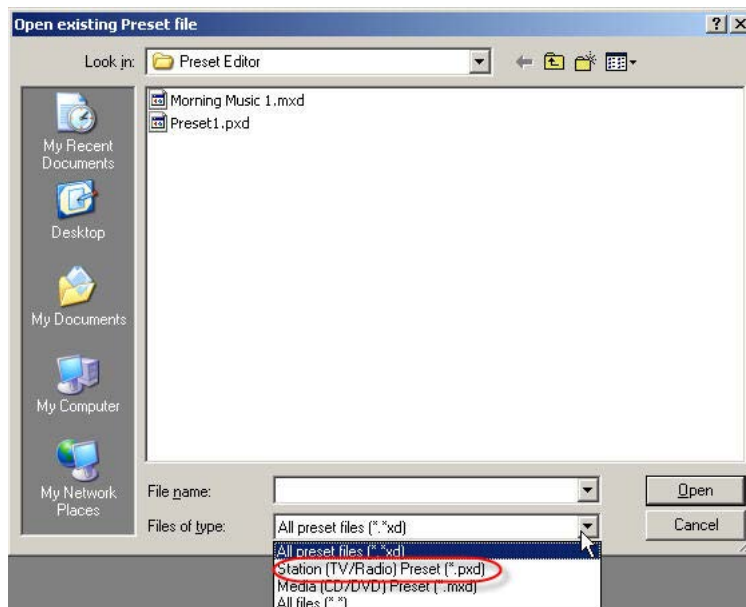


FIG. 47 Opening Existing Preset File dialog

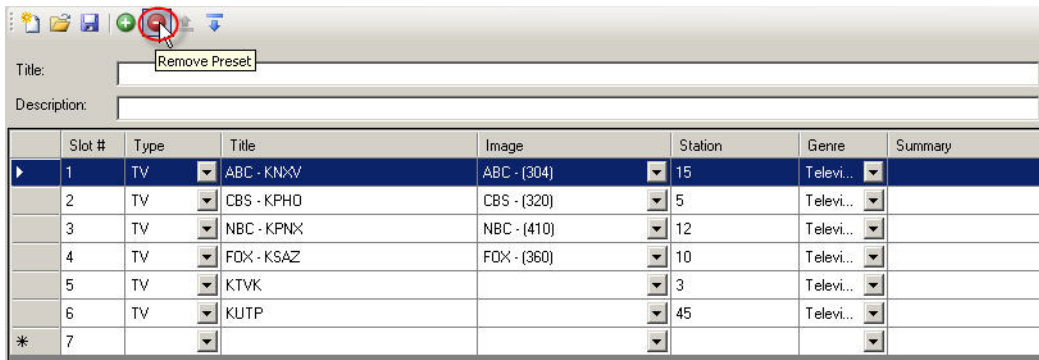
2. Select the PXD file that you want to edit, and click **Open**.
3. The selected PXD file is opened and displayed in a Station Preset Content Window.
  - You can change the *Title* and *Description* for this Station Preset file in the text fields at the top of the dialog.
  - To re-order the stations in the list, select a station and drag-and-drop it into a new position in the list (or use the Move Up and Move Down toolbar buttons).
  - To change the station type (from TV to Radio or vice-versa), select a station in the list, click in the *Type* column, and select the appropriate station type (TV to Radio) from the drop-down.
  - To change the title of a selected station, click in the *Title* column and edit the text as desired.
  - To change the image (icon) associated with a selected station, click in the *Image* column, and select the appropriate image icon from the drop-down.
  - To change the station number of a selected station, click in the *Station* column and edit the number as desired.
  - To change the *Genre* associated with a selected channel/station, click in the *Genre* column and select the appropriate genre from the drop-down list of all genre names currently in the Media Library, or enter a custom genre name as desired.
  - To change the summary information for a selected station, click in the *Summary* column and edit the text as desired.
4. Click the Save toolbar button (or select **File > Save**) to save your changes.



*The items in the TV tab (of the Media Bar) suffixed with "- [AMX]" are automatically added and maintained by AMX, and cannot be modified. These are provided by AMX to offer a quick-start to creating Station Presets using common stations.*

## Removing a Station From a Station Preset File

1. Select the station (TV or Radio) you want to remove in the Station Preset Content window.
2. Click the Remove Preset toolbar button (FIG. 43).



**FIG. 48** Removing a Station From a Station Preset File



*Removing a station from a Station Preset file does not delete it from the Media Library. It will still be available for adding to other Station Preset files. To permanently delete a station from the Media Library, select the station in the Media Library Bar and select **Media Library > Remove Entry From Media Library**.*

# Configuring FreeCDDB Options

## Overview

If, when attempting to identify a disc (via the Media Library > Identify CD option), you receive the message: "Failed to retrieve CDDB sites!", you may need to configure your CDDB options in order to connect to the CDDB servers.

Use the options in the FreeCDDB Settings dialog to establish a list of servers that provide disc information. Select **Media Library > Configure CDDB** (or press Ctrl+D) to access this dialog.



NOTE

You must have access to the Internet to identify media via the CDDB service.

## Automatically Generating the CDDB Site List

1. Select **Media Library > Configure CDDB** to open the *FreeCDDB Settings* dialog (FIG. 49).

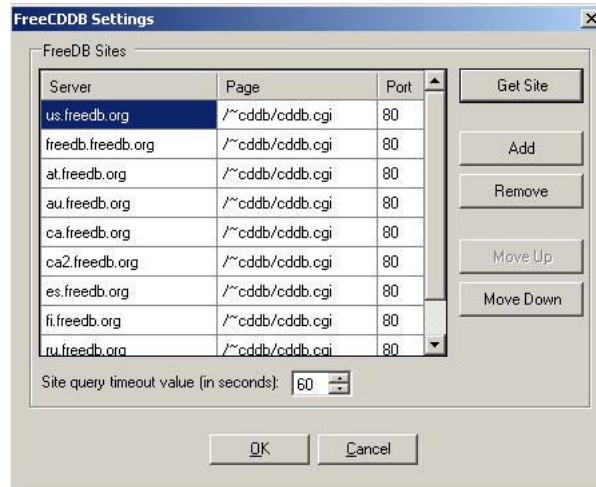


FIG. 49 FreeCDDB Settings dialog

2. Click **Get Sites**.
  - If you are able to connect to the Freedb.org CDDB servers, the FreeDB Sites list will be populated with a list of available servers.
  - If you receive the message: "Failed to retrieve CDDB sites!", you may need to configure your HTTP proxy server options.

## Manually Adding a CDDB Server

1. Click **Add** (in the *FreeCDDB Settings* dialog) to open the *Add FreeDB Site* dialog (FIG. 50).



**FIG. 50** Add FreeDB Site dialog

2. Enter the IP address or URL (in the *Server* field), Path information, and the desired Port of the CDDB server.
3. Click **OK** to close the dialog and return to the *FreeCDDB Settings* dialog. The server you just added is now included at the bottom of the CDDB Sites list.
4. Use the **Move Up** and **Move Down** to sort the list as desired.

## Removing a CDDB Server

1. Select the server that you want to remove in the FreeDB Sites list (in the *FreeCDDB Settings* dialog).
2. Click **Remove**.



**Increase Your Revenue  
through education + knowledge**

In the ever-changing AV industry, continual education is key to success. AMX University is dedicated to ensuring that you have the opportunity to gather the information and experience you need to deliver strong AMX solutions. Plus, AMX courses also help you earn CEDIA, NSCA, InfoComm, and AMX continuing education units (CEUs).

Visit AMX University online for 24/7/365 access to:

- *Schedules and registration for any AMX University course*
- *Travel and hotel information*
- *Your individual certification requirements and progress*