



Installation Guide

NSS-RMS-PPC

RMS PeopleCube Resource
Scheduling Plug-in



AMX Software License and Warranty Agreement

- **LICENSE GRANT.** AMX grants to Licensee the non-exclusive right to use the AMX Software in the manner described in this License. The AMX Software is licensed, not sold. This license does not grant Licensee the right to create derivative works of the AMX Software. The AMX Software consists of generally available programming and development software, product documentation, sample applications, tools and utilities, and miscellaneous technical information. Please refer to the README.TXT file on the compact disc or download for further information regarding the components of the AMX Software. The AMX Software is subject to restrictions on distribution described in this License Agreement. AMX Dealer, Distributor, VIP or other AMX authorized entity shall not, and shall not permit any other person to, disclose, display, loan, publish, transfer (whether by sale, assignment, exchange, gift, operation of law or otherwise), license, sublicense, copy, or otherwise disseminate the AMX Software. Licensee may not reverse engineer, decompile, or disassemble the AMX Software.
- **ACKNOWLEDGEMENT.** You hereby acknowledge that you are an authorized AMX dealer, distributor, VIP or other AMX authorized entity in good standing and have the right to enter into and be bound by the terms of this Agreement.
- **INTELLECTUAL PROPERTY.** The AMX Software is owned by AMX and is protected by United States copyright laws, patent laws, international treaty provisions, and/or state of Texas trade secret laws. Licensee may make copies of the AMX Software solely for backup or archival purposes. Licensee may not copy the written materials accompanying the AMX Software.
- **TERMINATION.** AMX RESERVES THE RIGHT, IN ITS SOLE DISCRETION, TO TERMINATE THIS LICENSE FOR ANY REASON UPON WRITTEN NOTICE TO LICENSEE. In the event that AMX terminates this License, the Licensee shall return or destroy all originals and copies of the AMX Software to AMX and certify in writing that all originals and copies have been returned or destroyed.
- **PRE-RELEASE CODE.** Portions of the AMX Software may, from time to time, as identified in the AMX Software, include PRE-RELEASE CODE and such code may not be at the level of performance, compatibility and functionality of the GA code. The PRE-RELEASE CODE may not operate correctly and may be substantially modified prior to final release or certain features may not be generally released. AMX is not obligated to make or support any PRE-RELEASE CODE. ALL PRE-RELEASE CODE IS PROVIDED "AS IS" WITH NO WARRANTIES.
- **LIMITED WARRANTY.** AMX warrants that the AMX Software (other than pre-release code) will perform substantially in accordance with the accompanying written materials for a period of ninety (90) days from the date of receipt. AMX DISCLAIMS ALL OTHER WARRANTIES, EITHER EXPRESS OR IMPLIED, INCLUDING, BUT NOT LIMITED TO IMPLIED WARRANTIES OF MERCHANTABILITY AND FITNESS FOR A PARTICULAR PURPOSE, WITH REGARD TO THE AMX SOFTWARE. THIS LIMITED WARRANTY GIVES LICENSEE SPECIFIC LEGAL RIGHTS. Any supplements or updates to the AMX SOFTWARE, including without limitation, any (if any) service packs or hot fixes provided to Licensee after the expiration of the ninety (90) day Limited Warranty period are not covered by any warranty or condition, express, implied or statutory.
- **LICENSEE REMEDIES.** AMX's entire liability and Licensee's exclusive remedy shall be repair or replacement of the AMX Software that does not meet AMX's Limited Warranty and which is returned to AMX in accordance with AMX's current return policy. This Limited Warranty is void if failure of the AMX Software has resulted from accident, abuse, or misapplication. Any replacement AMX Software will be warranted for the remainder of the original warranty period or thirty (30) days, whichever is longer. Outside the United States, these remedies may not be available. NO LIABILITY FOR CONSEQUENTIAL DAMAGES. IN NO EVENT SHALL AMX BE LIABLE FOR ANY DAMAGES WHATSOEVER (INCLUDING, WITHOUT LIMITATION, DAMAGES FOR LOSS OF BUSINESS PROFITS, BUSINESS INTERRUPTION, LOSS OF BUSINESS INFORMATION, OR ANY OTHER PECUNIARY LOSS) ARISING OUT OF THE USE OF OR INABILITY TO USE THIS AMX SOFTWARE, EVEN IF AMX HAS BEEN ADVISED OF THE POSSIBILITY OF SUCH DAMAGES. BECAUSE SOME STATES/COUNTRIES DO NOT ALLOW THE EXCLUSION OR LIMITATION OF LIABILITY FOR CONSEQUENTIAL OR INCIDENTAL DAMAGES, THE ABOVE LIMITATION MAY NOT APPLY TO LICENSEE.
- **U.S. GOVERNMENT RESTRICTED RIGHTS.** The AMX Software is provided with RESTRICTED RIGHTS. Use, duplication, or disclosure by the Government is subject to restrictions as set forth in subparagraph ©(1)(ii) of The Rights in Technical Data and Computer Software clause at DFARS 252.227-7013 or subparagraphs ©(1) and (2) of the Commercial Computer Software Restricted Rights at 48 CFR 52.227-19, as applicable.
- **SOFTWARE AND OTHER MATERIALS FROM AMX.COM MAY BE SUBJECT TO EXPORT CONTROL.** The United States Export Control laws prohibit the export of certain technical data and software to certain territories. No software from this Site may be downloaded or exported (i) into (or to a national or resident of) Cuba, Iraq, Libya, North Korea, Iran, Syria, or any other country to which the United States has embargoed goods; or (ii) anyone on the United States Treasury Department's list of Specially Designated Nationals or the U.S. Commerce Department's Table of Deny Orders. AMX does not authorize the downloading or exporting of any software or technical data from this site to any jurisdiction prohibited by the United States Export Laws.

This Agreement replaces and supersedes all previous AMX Software License Agreements and is governed by the laws of the State of Texas, and all disputes will be resolved in the courts in Collin County, Texas, USA. For any questions concerning this Agreement, or to contact AMX for any reason, please write: AMX License and Warranty Department, 3000 Research Drive, Richardson, TX 75082.

Table of Contents

RMS PeopleCube Resource Scheduler Interface	1
Overview	1
Installation Checklist	1
Scheduling Plug-in Configuration	3
Overview	3
About Dialog.....	4
RMS PeopleCube Plug-in Configuration Options	5
Overview	5
Server Connection	5
Testing the Connection	5
Settings.....	6
Blackout Period	6
Notifications	7
Finish Configuration.....	7
Room Configuration	9
Overview	9
Creating a Room Configuration	9
Known Issues	11

RMS PeopleCube Resource Scheduler Interface

Overview

The RMS PeopleCube Resource Scheduler Interface provides users with the ability to schedule RMS appointments through the PeopleCube Resource Scheduler database and display the reservation information on AMX touch panels. Users can create and modify appointments directly from AMX touch panels, which will then inform the PeopleCube Resource Scheduler database of the changes. This enables scheduled events to initiate system presets, and provide electronic signage capabilities through AMX touch panels.

The PeopleCube Resource Scheduler plug-in allows a room to access and read schedule information from the designated PeopleCube Resource Scheduler reservation list. It also allows users to walk up to a touch panel and create reservations on the PeopleCube Resource Scheduler database. For active appointments, appointments currently in session, a user can use the touch panel to request a meeting extension or to end a meeting earlier than the pre-scheduled end time to free up the room resource.



NOTE

The RMS PeopleCube Scheduling Plug-in supports a single PeopleCube database.

To read schedule information from PeopleCube Resource Scheduler, the RMS PeopleCube Resource Scheduler Interface connects to the PeopleCube Resource Scheduler database and accesses the reservation information.

Installation Checklist

RMS PeopleCube Resource Scheduler Interface Install Checklist

<ul style="list-style-type: none"> The PeopleCube Resource Scheduler programming interface SQL script must be applied to the Resource Scheduler system database prior to installing the RMS Resource Scheduler Plug-in. To obtain this database update script and for assistance deploying this updated script to your Resource Scheduler database, please contact: PeopleCube <i>Telephone:</i> 1-800-282-7319 <i>E-mail:</i> help@peoplecube.com <i>Website:</i> http://www.peoplecube.com
<ul style="list-style-type: none"> Install the RMS Resource Scheduler Interface using RMSResourceSchedulerPlugin.exe, following the installation instructions.
<ul style="list-style-type: none"> Create a reservation room for each schedulable room in Resource Scheduler. You can use a single Resource Scheduler reservation room or multiple rooms to accomplish this. See the Resource Scheduler documentation for more details on how to configure Resource Scheduler.
<ul style="list-style-type: none"> In the Configuration Wizard, select External Appointment Management/Schedule System on the Scheduling page in the Welcome section.
<ul style="list-style-type: none"> In the Configuration Wizard, configure the Scheduling Manager Service to run as the Local System account.
<ul style="list-style-type: none"> In the Configuration Wizard, you must register and configure the PeopleCube Resource Scheduler Appointment Interface Plug-in on Scheduling page of the System Settings section.
<p>For Each Room in the RMS application:</p> <p>When adding a new room, after you click the Save button on the <i>Create New Room page</i>:</p> <ol style="list-style-type: none"> Fill in the <i>Location</i> and <i>Room</i> fields from the matching information in the Resource Scheduler database Click the Save button to configure.

Scheduling Plug-in Configuration

Overview

To use the RMS PeopleCube Resource Scheduler plug-in, it must first be registered. Only a single scheduling plug-in may be registered at one time. The plug-in configuration is performed in the Configuration Wizard under the System Settings, Scheduling node of the navigation tree (FIG. 1).

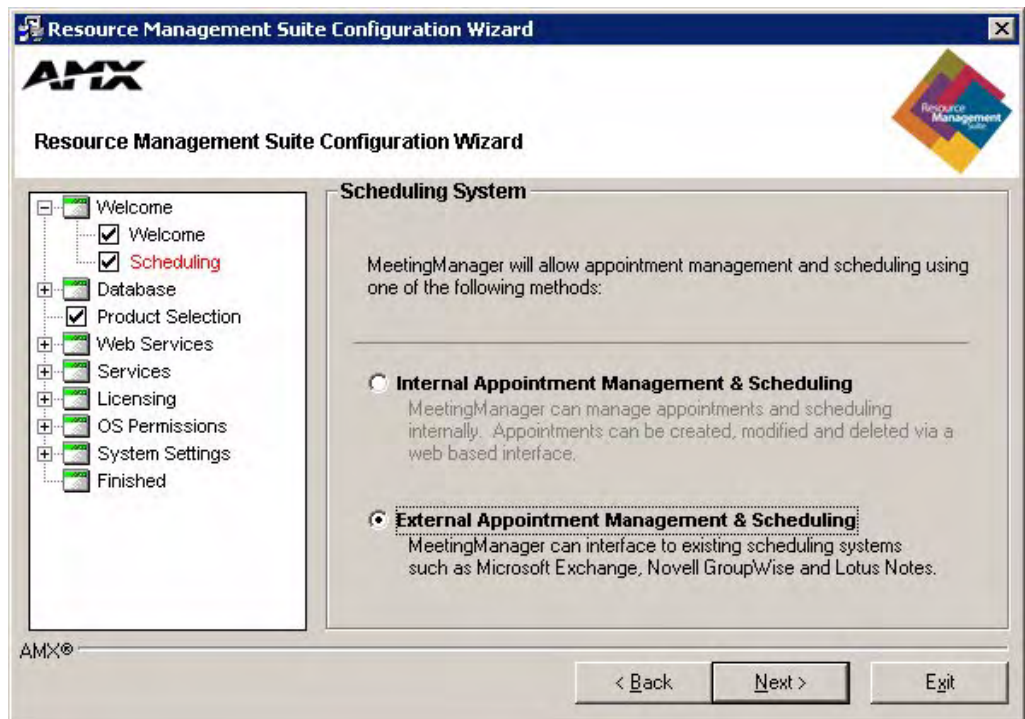


FIG. 1 Scheduling System



NOTE

The RMS application must be configured for External Scheduling Systems for the scheduling plug-in configuration dialog to be displayed.

To register the RMS PeopleCube Resource Scheduler plug-in, place a checkmark in the box to the left of the entry in the scheduling plug-in list. This will automatically load the plug-in configuration dialog (FIG. 2).

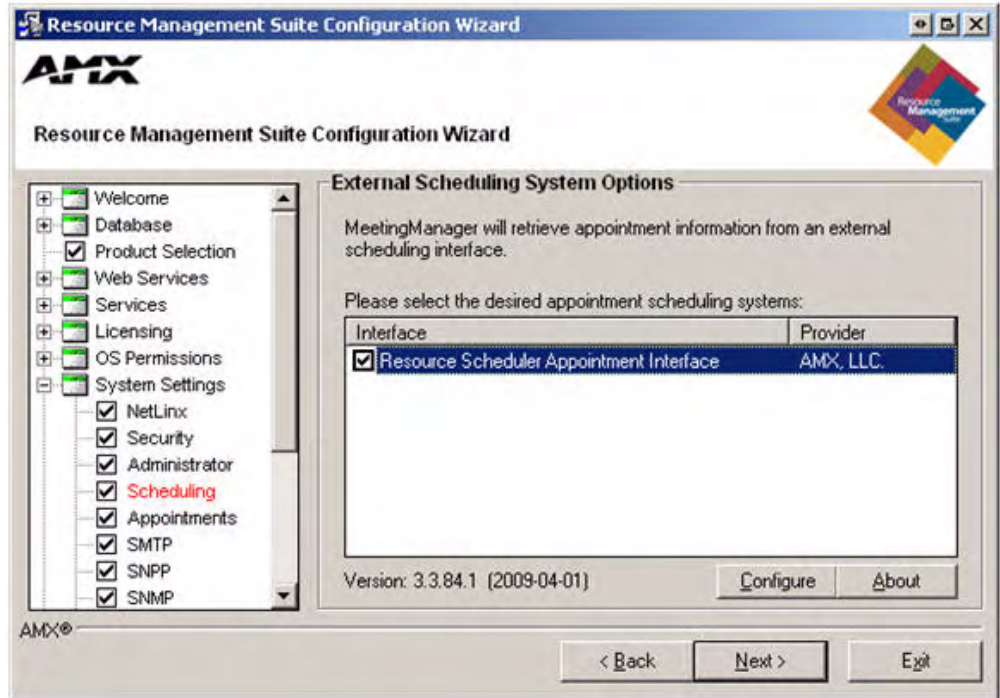


FIG. 2 External Scheduling System Options

About Dialog

The *About* dialog describes the details about the overall installed plug-in including the name, version, date created, company, comments, and description of the plug-in (FIG. 3).

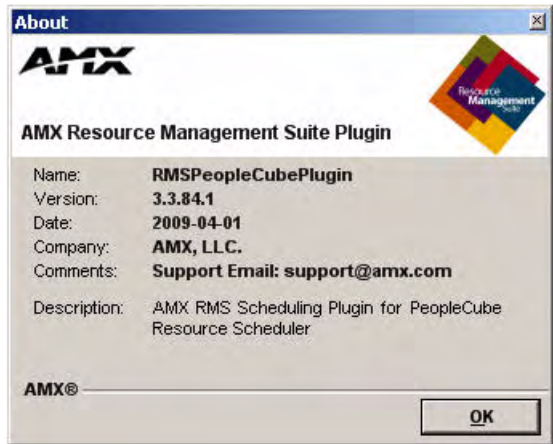


FIG. 3 RMS PeopleCube Plugin - About dialog

RMS PeopleCube Plug-in Configuration Options

Overview

The *Configuration* dialog allows you to configure the required PeopleCube server settings and RMS scheduling manager behavior for all RMS PeopleCube rooms. The dialog is separated into four tabs, as described in the following sections.

Server Connection

The **Server Connection** tab of the *PeopleCube Resource Scheduler Configuration* dialog allows you to set the Resource Scheduler SQL Server as well as the user name and password used to authenticate a connection to the Resource Scheduler server (FIG. 4).

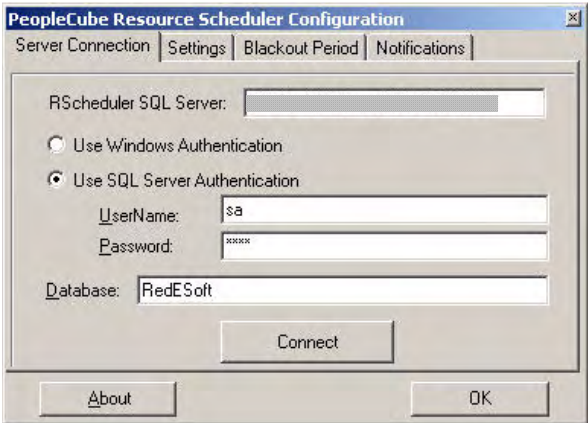


FIG. 4 PeopleCube Resource Scheduler Configuration dialog - Server Connection tab

Testing the Connection

After entering your Resource Scheduler server information, it is important to test the access to the Resource Scheduler server.

To test the synchronization of data between the PeopleCube database and RMS, click **Connect** button (in the *Configuration* dialog).

If a connection to the PeopleCube Database Server was successful, the following message will be displayed (FIG. 5):

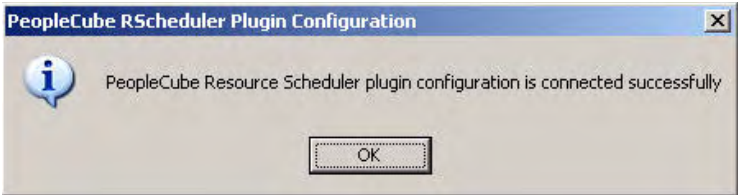


FIG. 5 Test Connection - Successful

If the connection fails, you will receive an **ERROR** message instead. In this case, correct your data and try again. If you cannot make a successful connection, contact your PeopleCube administrator to verify your settings.

Settings

The options in the Settings tab of the *PeopleCube Resource Scheduler Configuration* dialog allow RMS to create and modify appointments in the Resource Scheduler database (FIG. 6).

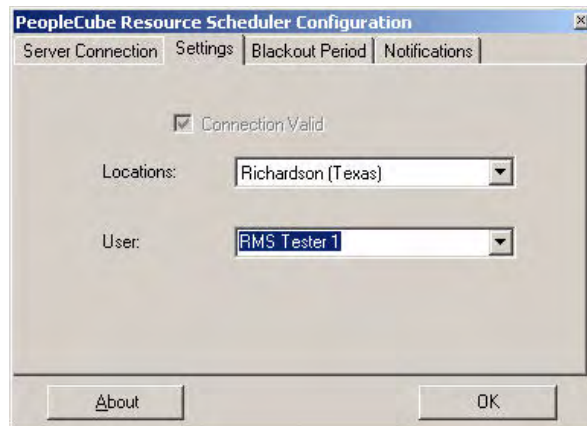


FIG. 6 PeopleCube Resource Scheduler Configuration dialog - Settings tab

The settings provided on this tab correlate to the PeopleCube database set up in the *Server Configuration* tab (FIG. 4 on page 5).

- **Locations** - Select from the drop-down list. The location list is sorted by the region and location.
- **User** - Select from the drop-down list. The user list is filtered by the location selection.

Blackout Period

The *Blackout Period* tab contains the settings for scheduling synchronization/trolling blackout (FIG. 7).

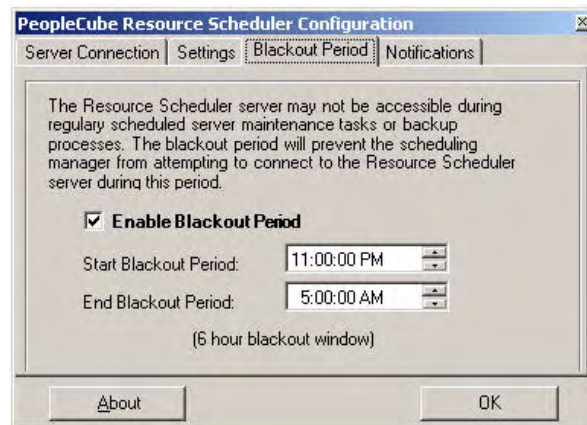


FIG. 7 PeopleCube Resource Scheduler Configuration dialog - Blackout Period tab

During this blackout period, The RMS application will not attempt to establish a connection to any PeopleCube server. Many systems perform nightly backups or system related processing where the server may not be available or should not be accessed.

The blackout option prevents the RMS application from accessing the server during these times.

This option is enabled by default and is recommended. You may change the time frame to accommodate your specific environment.

Notifications

The *Notifications* tab provides system options for return notification e-mails to the appointment originator (FIG. 8).

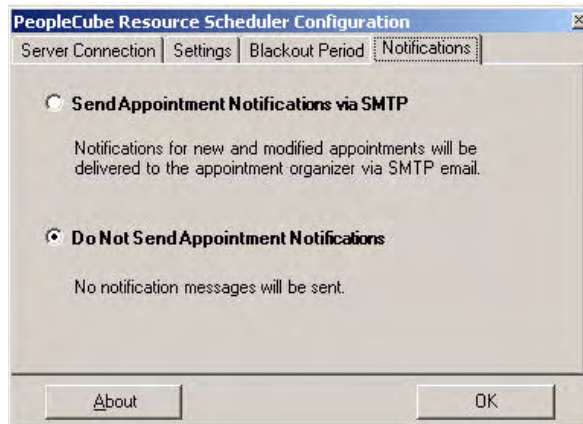


FIG. 8 PeopleCube Resource Scheduler Configuration dialog - Notifications tab

- If you select *Do Not Send Appointment Notifications*, the Resource Scheduler Appointment Interface will not send any notification e-mails to the appointment originator.
- Otherwise, the RMS application can deliver this appointment notification message via SMTP. The internet address of the originator must be configured in Resource Scheduler Server to send the notification via SMTP.

After you set all the appropriate plug-in settings, click **OK** to complete the plug-in configuration.



NOTE

You can return to this configuration at any time using the Configuration Wizard, selecting this plug-in from the list and clicking the Configure button.

Finish Configuration

Select **Launch Meeting Manager Web Page** and click **Finish** in the *Finished* tab. This action will automatically launch Internet Explorer, showing the default RMS page (FIG. 9).

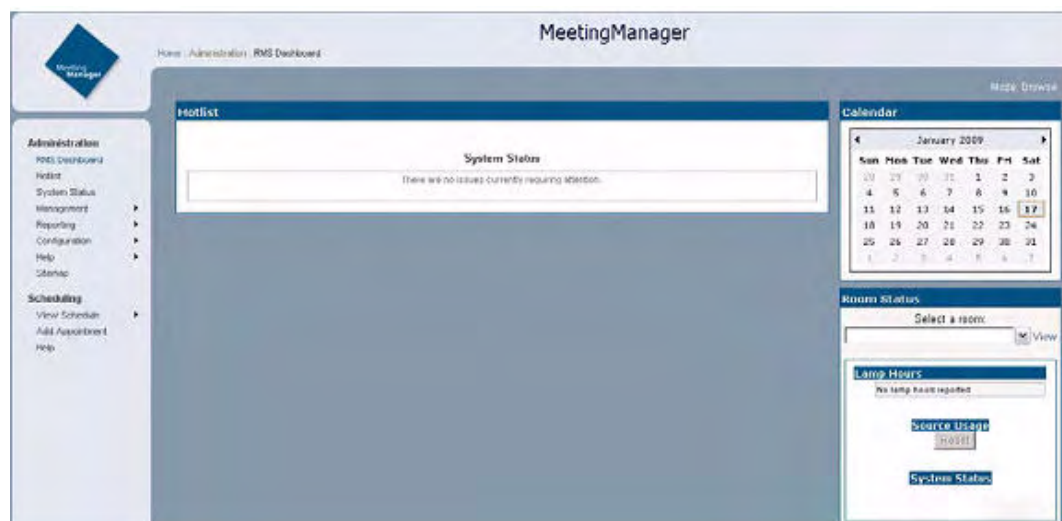


FIG. 9 Default RMS Page

Room Configuration

Overview

The room configuration is done via a web page as part of the RMS system. In the web administrative interface, when you add a new room or modify an existing room, you are provided with Room Scheduling Settings.

Creating a Room Configuration

1. From the *Administration* menu, select **Rooms** from the *Management* sub-menu (FIG. 10).

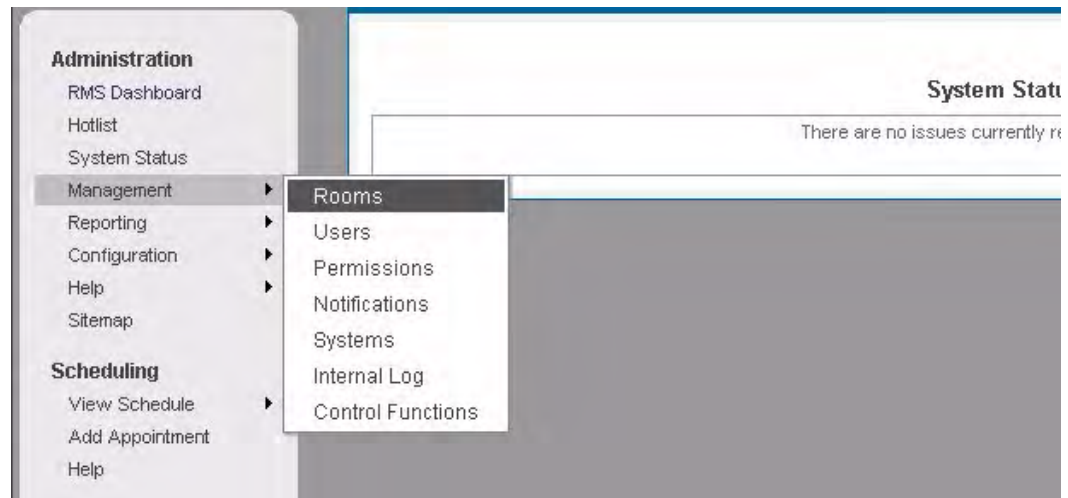


FIG. 10 Default RMS Page - Management menu

2. In the *Rooms* tab, select the room for which you need to configure the RMS room with PeopleCube equivalent (FIG. 11).

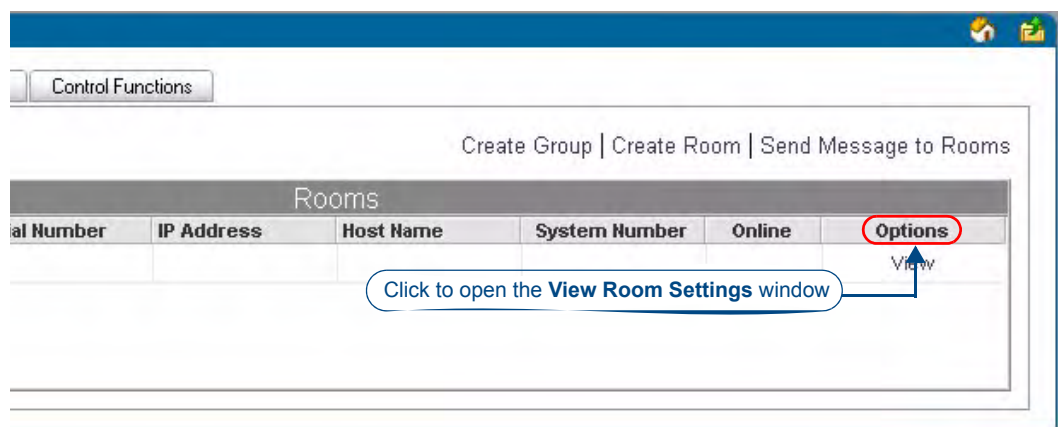


FIG. 11 Management - Rooms - select Room

3. In the *Options* column, click on **View** to open the *View Room Settings* window.
If the plug-in installation was successful, the *RMS PeopleCube Scheduling Interface* is displayed at the bottom of the window (FIG. 12).

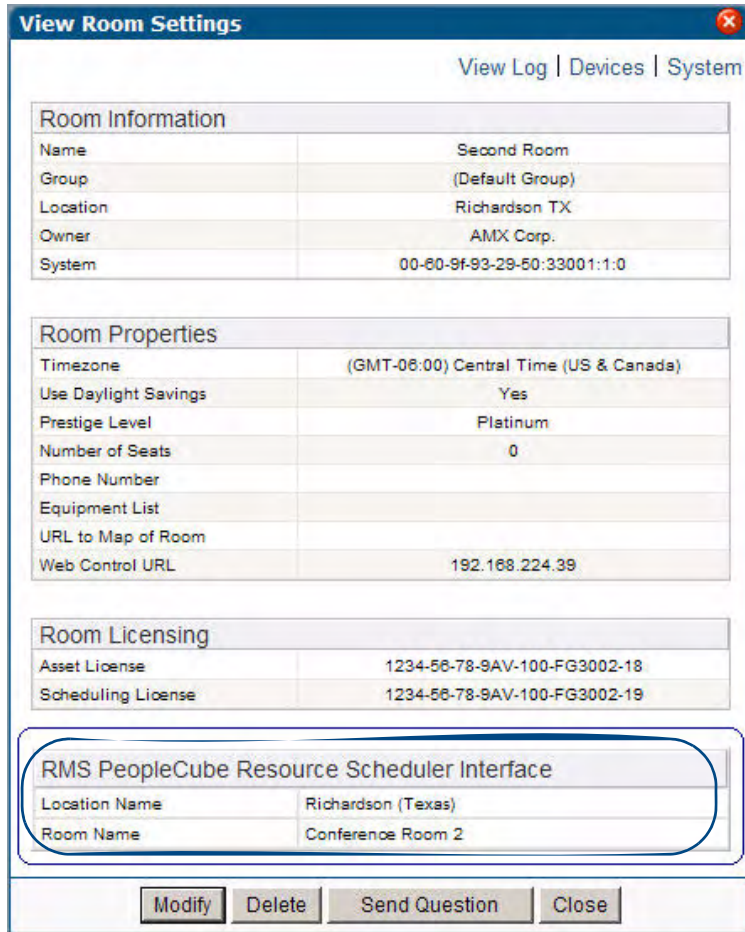


FIG. 12 View Room Settings window

- Click on **Modify** in the *View Room Settings* window to open the *Modify Room Settings* window (FIG. 13). Use the options in this window to map PeopleCube Rooms to RMS.

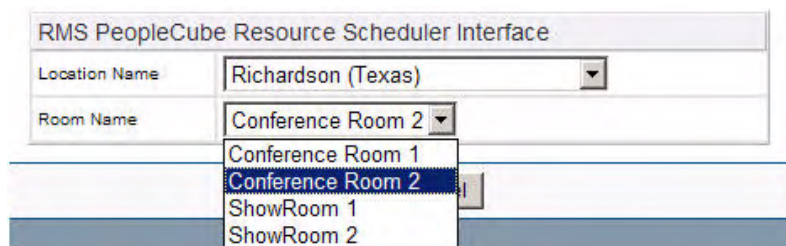


FIG. 13 Modify Room Settings window

- Select the appropriate room from the *Room Name* drop-down menu under *RMS PeopleCube Resource Scheduling Interface*, and select **Save**. The room name is filtered by location name.

Known Issues

1. Recurring event instances in Resource Scheduler are handled as individual appointment reservations in RMS.



It's Your World - Take Control™