

Overview

The AMXmeetingroom software solution (FG3011-01) allows for system configuration of a meeting room-type application directly from an AMX touch panel.

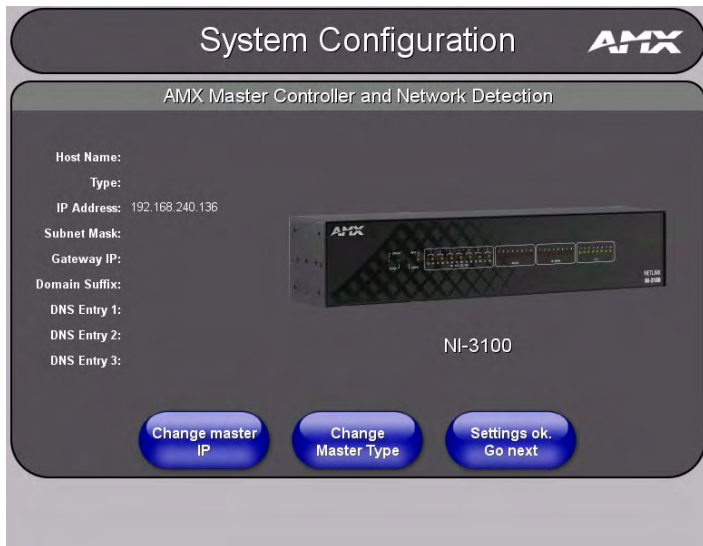


FIG. 1 AMXmeetingroom

Specifications

AMXmeetingroom is a software application that is delivered in a NetLinx token file (.TKN) and a password protected TPDesign4 touch panel file (.TP4), both of which are downloadable from www.amx.com.

Note: Make sure to select the appropriate panel resolution for your specific touch panel.

Minimum Requirements

The Minimum System Requirements for AMXmeetingroom are listed in the following table:

AMXmeetingroom - Minimum Requirements & Recommendations	
PC Requirements and Recommendations:	<ul style="list-style-type: none"> Pentium 233 MHZ processor (minimum requirement); 300 MHZ or faster recommended. 75 MB of free disk space (minimum requirement); 150 MB recommended. 128 MB of installed memory (RAM). Minimum (VGA) screen resolution of 800x600. Windows-compatible mouse (or other pointing device).
Touch Panel Requirements:	Supported panel must have a minimum of 128 MB RAM.
NetLinx Studio:	<ul style="list-style-type: none"> v.3.0.315 or greater. The latest release version of NetLinx Studio can be downloaded from www.amx.com.
Internet:	AMXmeetingroom requires an outside internet connection and access to www.amx.com in order to activate the license key and to download the AMXmeetingroom compatible Duet modules for the AV devices in the meeting room.

AMXmeetingroom - Minimum Requirements & Recommendations	
Supported NetLinx Masters:	<ul style="list-style-type: none"> NI-2100 (firmware v3.41.422 or greater) NI-3100 (firmware v3.41.422 or greater) NI-3101-SIG (firmware v3.41.422 or greater) NI-4100 (firmware v3.41.422 or greater) DVX-2100HD (firmware v3.51.339 or greater)

Communications

- Touch Panel ("Panel") and Master** – The NetLinx panel and master should be connected such that they can communicate together. Please refer to the NetLinx Studio online help or Operation/Reference Guide for additional details regarding setting up the NetLinx master and touch panel.
- Panel** – The touch panel must be set to device ID **10001**.
- NI Controller** – The NetLinx controller must be set to device ID **5001**. The system number of the master may be set as desired.

Load Master/Panel

- Once the TKN and TP4 files have been downloaded from www.amx.com, you can load the files from NetLinx Studio. Select *File Transfer* from the Tools menu, click *Add*, and select the "Other" tab. Here you will select the appropriate file types and browse to the AMXmeetingroom file locations.
- Make sure to set the appropriate communications settings in Studio.
- Follow the normal load process to send the files to the associated master and panel, setting the proper device, port, and system numbers.
- If the Master and Panel are communicating properly, the AMXmeetingroom application will begin on the License Key page.
- You are ready to begin configuring your system.

License Key/Demo Mode

The system will run in one of two modes – *Activated* or *Demo Mode*:

- Activated* mode runs once a license key has been purchased (FG3011-01) and has been entered into the touch panel.
- The system will also run in *Demo Mode* without entering a license key. To enter Demo Mode: Press **Activate**, and select **Demo Mode**. Demo Mode allows for full use of the system for 14 days, with the 'Demo Mode' watermark on the user pages.

Product Summary

The AMXmeetingroom product summary is available at: <http://www.amx.com/products/amxmeetingroom.asp>.

Web Assistant

Use the AMXmeetingroom Web Assistant to determine whether AMXmeetingroom is a match for your project specifications located at <http://www.amx.com/meetingroom/webAssistant/>

Training

Learn important installation, configuration and programming techniques in the AMX University course Getting Started with AMXmeetingroom (available online at www.amx.com/training).