

Overview

The DAS-MET-6SRC Metreau 6-Source Audio Keypad (**FG1122-01**) features source control, a navigation wheel that adjusts volume and provides up, down, left, right and center button options, as well as an LED bar for visual volume feedback (FIG. 1).

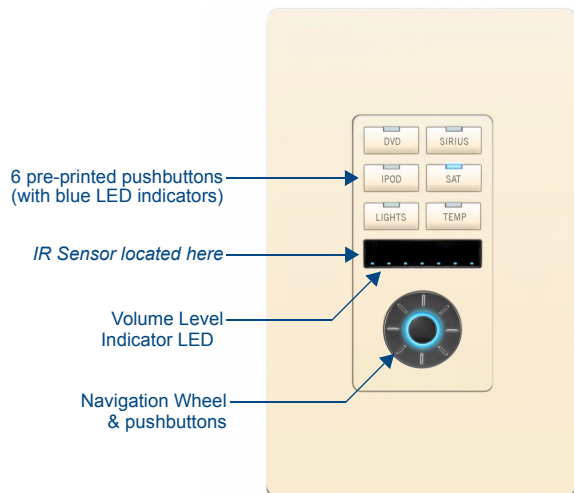


FIG. 1 DAS-MET-6SRC Metreau 6-Source Audio Keypad

Specifications

DAS-MET-6SRC Specifications	
Power:	12 VDC, 125 mA
Front Panel Components:	<ul style="list-style-type: none"> Pushbuttons - 6 tactile pushbuttons with blue LED indicators that illuminate when the source is selected, and stay lit until the source is turned off. These pre-printed buttons are field-replaceable. IR Sensor - Works specifically with the MIO-R1-AUDIO remote controller (38 kHz only). LED Levels Indicator - set of 7 blue LEDs provide volume level feedback. Navigation Wheel - consists of 5 pushbuttons: 4 directional pushbuttons (Up, Down, Right, Left), 1 center pushbutton, and bi-directional rotating wheel for volume adjustments. <p>Note that the center pushbutton is dual-purpose: a push/release provides one function, while a press/hold provides another.</p>
Dimensions (HWD):	<ul style="list-style-type: none"> Keypad and Mounting Plate: 4.055" x 1.772" x 0.887" (103mm x 45mm x 22.53mm) Mounts into standard decora-style wall plates.
Weight:	2.4 oz. (68.04 g)
Operating Environment:	<ul style="list-style-type: none"> Operating Temperature: 32° - 104° F (0° - 40° C). Relative Humidity: 5% - 85%, non-condensing. Intended for indoor use only.
Certifications:	<ul style="list-style-type: none"> FCC Class B CE IEC60950 RoHS
Colors:	<ul style="list-style-type: none"> White (FG1122-01-WH) Black (FG1122-01-BL) Light Almond (FG1122-01-LA)
Optional Accessories:	<ul style="list-style-type: none"> Single Button Kit (FG5794-10) Lutron Cairo Wallplates (available in a variety of sizes and colors)

Navigation Wheel - Pushbuttons

The *top*, *bottom*, *left* and *right* points on the Navigation Wheel are used for source control and can be programmed to provide any source functionality by learning the applicable IR code.

The *center* pushbutton is dual-purpose: a push/release on this button provides one function, while a press/hold provides another. The center pushbutton are also used for source control and can be programmed to provide any source functionality (again, by learning the applicable IR code).

FIG. 2 shows the button layout of the Navigation Wheel:

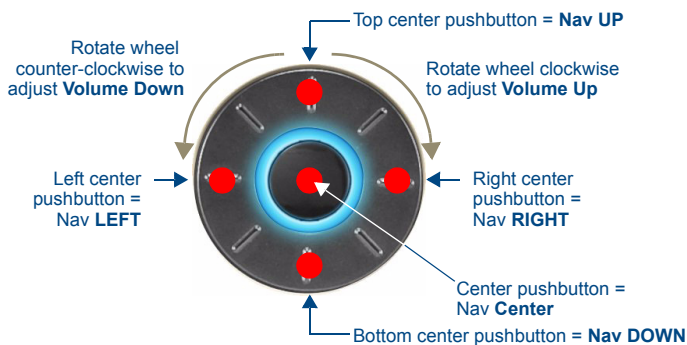


FIG. 2 Navigation Wheel - button layout

Navigation Wheel

The Navigation Wheel itself can be rotated bi-directionally, and provides volume level control.

- Clockwise rotation increases the volume level, counter-clockwise rotation decreases the volume level.
- The range for volume is 0 - 70.

Installation

Note: Before touching the device, discharge the static electricity from your body by touching a grounded metal object.

FIG. 3 shows the basic rear components of the DAS-MET-6SRC keypads:

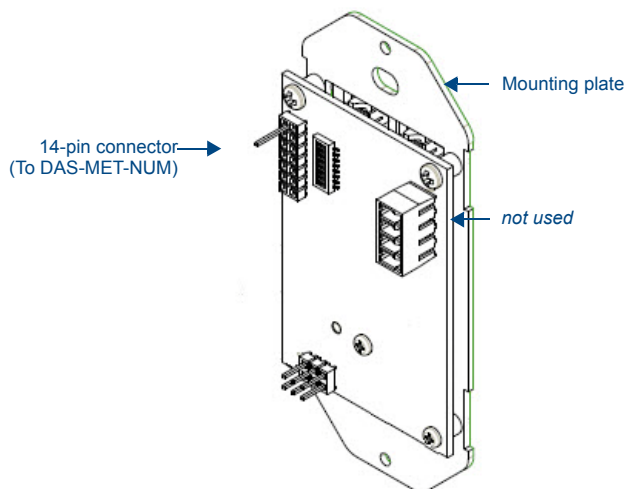


FIG. 3 DAS-MET-6SRC - Rear Components

Mounting Procedures

AMX recommends mounting Metreau keypads in standard U.S.-style decora wallboxes:

- Conduit box should meet NEC specs (section 370)
- Minimum internal clearance of (HWD) 2-5/8" x 1-3/4" x 1-5/8"

Note: Before touching the device, discharge the static electricity from your body by touching a grounded metal object.

Wallbox Mounting

- Use the cutout dimension for the wallbox to cutout the install surface.
- Connect the SWT cable connector to the rear of the keypad.
- Place the Mounting Plate on the wallbox; align the screw holes with the mounting holes and fasten the Mounting Plate to the wallbox using the screws supplied.

Note: Do not overtighten the screws when mounting the Mounting Frame. The device should be flush with mounting surface.

Mounting Dimensions

FIG. 4 provides detailed dimensions for the 6-button/Navigation Wheel Metreau keypads.

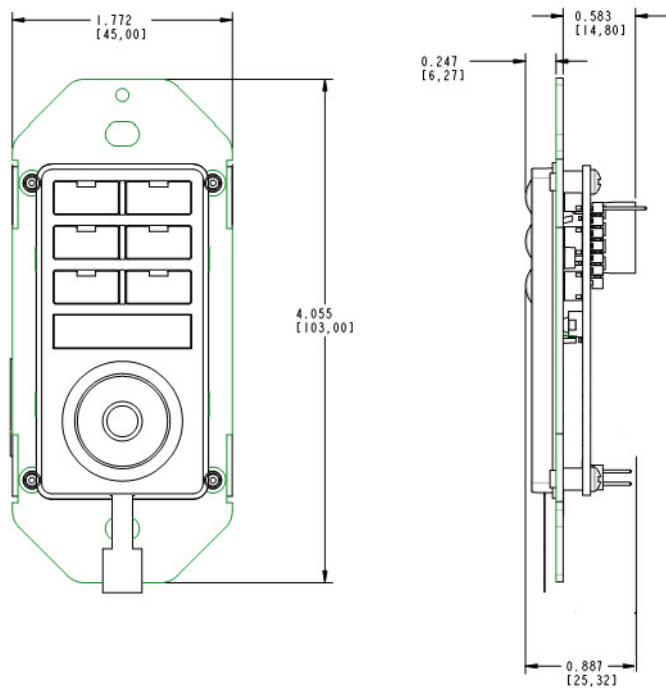


FIG. 4 Mounting Dimensions - DAS-MET-6SRC

Additional Documentation

Refer to the *Metreau Keypads Operation/Reference Guide* (available online www.amx.com) for additional information on configuration, programming, and using the Metreau keypads.

