

Overview

The UPX Universal Transmitter Wallplates convert one audio/video source over a single Cat5 cable with power supplied from the receiver. There are three types of wallplates, each supporting a different type of connection: Component (**FG1402-52**), Composite (**FG1402-50**), and RGB (**FG1402-51**). Each type of wallplate is available in US, UK, European, and Decora versions (see FIG. 1).

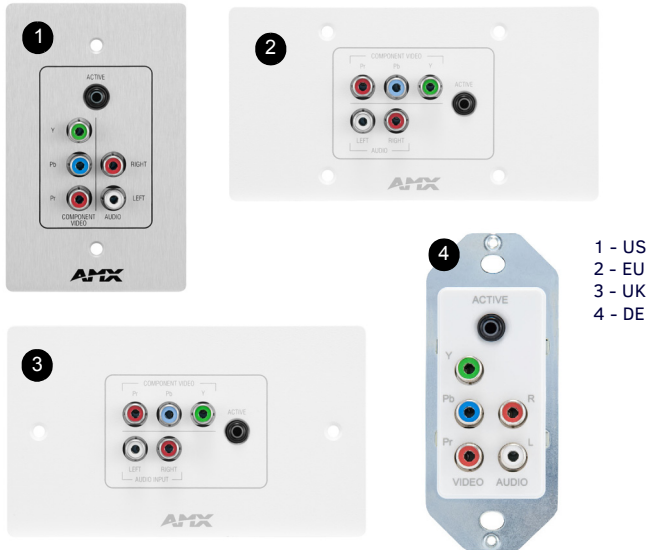


FIG. 1 COMPONENT WALLPLATE VERSIONS

Note: AMX has evaluated several types of category cable for use with UPX wall plates. Of the cable types tested, CAT-5e offers optimal performance for UPX analog signal routing and AMX recommends Belden part number 1583a for best performance. CAT-6 category cable however has demonstrated wide variance in performance across manufacturers and cable part numbers, and therefore AMX recommends that customers needing to install CAT-6 cable pre-test the desired cable model with UPX wall plates at the desired lengths prior to installation.

AMX is currently evaluating additional Cat-6 and Cat-7 model numbers for compatibility, and will publish recommended model numbers upon results of the evaluation.

The following table lists the specifications for the UPX Universal Transmitter Wallplates:

UPX UNIVERSAL TRANSMITTER WALLPLATE SPECIFICATIONS	
Power:	Power received over Cat5 connection from either the AVX-400 Cat5 Presentation Switcher or DVX-2100HD Total Environment Controller.
Front Panel Components:	<p>Component Wallplate (UPX-CN+A):</p> <ul style="list-style-type: none"> • 1 Active button • 3 female RCA connectors for component video signals • 2 female RCA connectors for audio signals <p>Composite Wallplate (UPX-CS+A):</p> <ul style="list-style-type: none"> • 1 Active button • 1 RCA (Y) connector for connecting to a composite source • 2 female RCA connectors for audio signals <p>RGB Wallplate (UPX-RGB+A):</p> <ul style="list-style-type: none"> • 1 Active button • 1 HD-15 connector for connecting to the source • 1 3.5mm/1/8" Stereo jack for source audio connection
Rear Panel Components:	1 RJ-45 connector for receiving power from the receiver and transmitting audio and video source signals
Operating Environment:	Storage Temperature: -10° C to 70° C (14° F to 158° F) Operating Temperature: 0° C to 40° C (32° F to 104° F)
Mounting:	Mounts into US single gang and UK and European double gang back boxes.

Continued 1

UPX UNIVERSAL TRANSMITTER WALLPLATE SPECIFICATIONS (CONT.)	
Dimensions (HWD):	<p>US: 4 11/16" (11.9 cm) x 2 15/16" (7.4 cm) x 1 1/4" (3.15 cm) HWD</p> <p>UK: 3 3/8" (8.6 cm) x 5 13/16" (14.7 cm) x 1 1/4" (3.15 cm) HWD</p> <p>EU: 3 1/8" (8 cm) x 6" (15.2 cm) x 1 1/4" (3.15 cm) HWD</p> <p>DE: 3 15/16" (10 cm) x 1 5/8" (4.2 cm) x 1 1/4" (3.13 cm) HWD</p>
Weight:	<p>Component Wallplate (UPX-CN+A):</p> <ul style="list-style-type: none"> • US: 3.32 oz. (0.0942 kg) • UK: 4.66 oz. (0.1322 kg) • EU: 4.41 oz. (0.1252 kg) • DE: 3.24 oz. (0.1918 kg) <p>Composite Wallplate (UPX-CS+A):</p> <ul style="list-style-type: none"> • US: 3.06 oz. (0.0868 kg) • UK: 4.36 oz. (0.1238 kg) • EU: 4.26 oz. (0.1208 kg) • DE: 3.02 oz. (0.0855 kg) <p>RGB Wallplate (UPX-RGB+A):</p> <ul style="list-style-type: none"> • US: 3.31 oz. (0.0938 kg) • UK: 4.73 oz. (0.1343 kg) • EU: 4.52 oz. (0.1283 kg) • DE: 3.23 oz. (0.0915 kg)
Color Schemes:	The US, EU, and UK wallplates are available in three color schemes: Black (B), White (W), and Brushed Aluminum (AL). Decora wallplates are available in Black (B), and White (W).
Certifications:	FCC Class B, CE, and IEC60950
Included Accessories:	UPX Universal Transmitter Wallplates Installation Guide (93-1402-50) Main to I/F Grounding Cable (64-2250-32)

NOTE: Extended Display Identification Data (EDID) is not passed by the UPX Universal Transmitter Wallplates.

Mounting Specifications

The dimensions for each wallplate version are identical, regardless of connection type. Refer to the following images for dimensions of the wallplates:

US Version

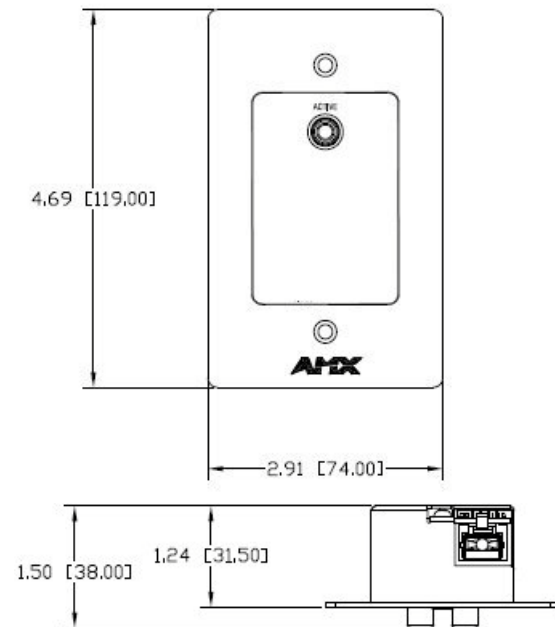


FIG. 2 US DIMENSIONS

UK Version

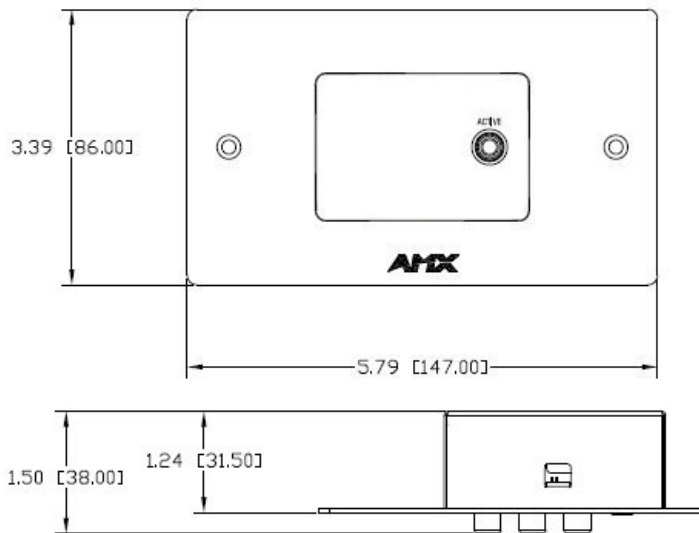


FIG. 3 UK DIMENSIONS

European Version

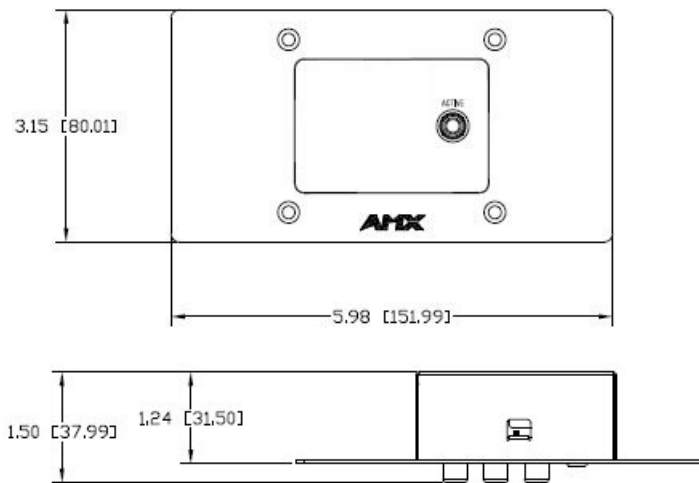


FIG. 4 EUROPEAN DIMENSIONS

Decora Wallplate Dimensions

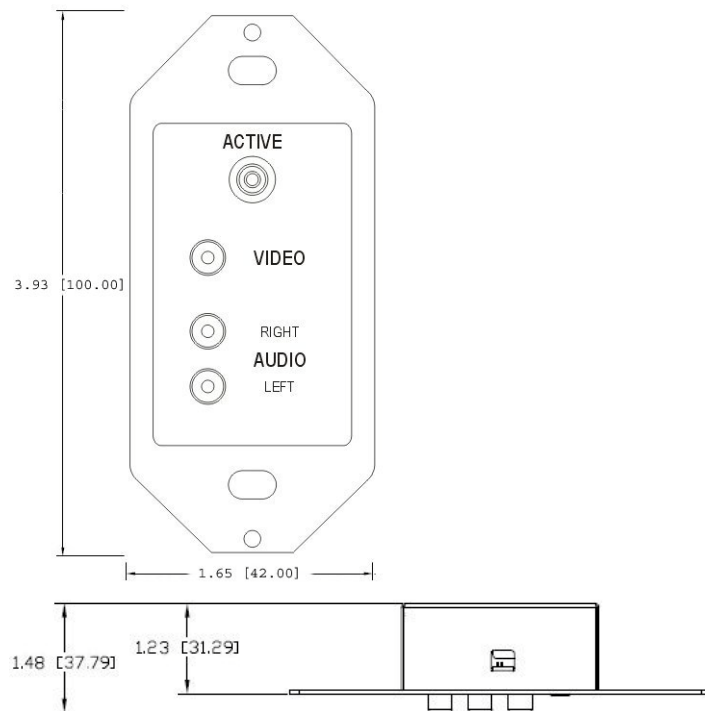


FIG. 5 DECORA WALLPLATE DIMENSIONS

Grounding RGB Wallplates

RGB wallplates may require earth grounding. Use the supplied grounding cable to provide earth continuity to the wallplate.

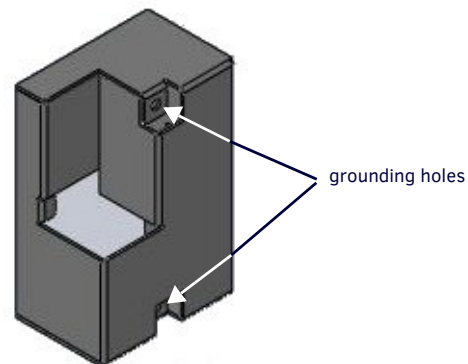


FIG. 6 RGB WALLPLATE (REAR-VIEW) WITH GROUNDING CABLE LOCATIONS

Follow these steps to ground an RGB wallplate:

1. Use the supplied screw to connect the metal loop on one end of the grounding cable to one of the holes in the metal back box on the wallplate (see FIG. 6).
2. Use the remaining screw to attach the metal loop on the other end of the grounding cable to a grounded object.

Note: While the grounding cable is only necessary for RGB wallplates, AMX recommends you use the grounding cable for all wallplate types.

