

Overview

The UPX-HDMI+A HDMI Pass-through Universal Transmitter Wallplate (FG1402-53) enables users to connect HDMI sources directly to a projector while using an AVX-400 or DVX-2100HD for audio and projector control.

HDMI video passes through the wallplate directly to the connected projector.

Note: UPX-HDMI+A Wallplates support pass-through of HDCP (High-bandwidth Digital Content Protection) information.

Stereo audio and projector control signals are carried via Cat-5 cable to the AVX-400 or DVX-2100HD allowing the audio to be mixed, processed and sent out the amplifier or line out.

Use the pushbutton to select the HDMI input and corresponding audio source.

The wallplate is available in US and Decora versions (see FIG. 1). Each wallplate mounts into single-gang back boxes.



FIG. 1 UPX-HDMI+A WALLPLATES

Note: AMX has evaluated several types of category cable for use with UPX wallplates. Of the cable types tested, CAT-5e offers optimal performance for UPX analog signal routing and AMX recommends Belden part number 1583a for best performance. CAT-6 category cable however has demonstrated wide variance in performance across manufacturers and cable part numbers, and therefore AMX recommends that customers needing to install CAT-6 cable pre-test the desired cable model with UPX wall plates at the desired lengths prior to installation.

AMX is currently evaluating additional Cat-6 and Cat-7 model numbers for compatibility, and will publish recommended model numbers upon results of the evaluation.

The following table lists the specifications for the UPX-HDMI+A HDMI Pass-through Universal Transmitter Wallplate:

UPX-HDMI+A SPECIFICATIONS	
Power:	Power received over Cat-5 connection from the AVX-400 Twisted Pair Presentation Switcher or DVX-2100HD All-in-One Presentation Switchers.
Front Panel Components:	<ul style="list-style-type: none"> • 1 Active pushbutton • 1 HDMI connector for connecting to the source device • 1 female 3.5mm/1/8th" Stereo mini-jack for source audio connection
Rear Panel Components:	<ul style="list-style-type: none"> • 1 RJ-45 connector for receiving power from the receiver and transmitting audio source signals • 1 HDMI connector for connecting to a projector.
Power Draw:	<ul style="list-style-type: none"> • Startup: • Constant: 98mA
Operating Environment:	Storage Temperature: -10° C to 70° C (14° F to 158° F) Operating Temperature: 0° C to 40° C (32° F to 104° F)
Mounting:	Mounts into single gang back boxes.
Dimensions (HWD):	US: 4 11/16" (11.9 cm) x 2 15/16" (7.4 cm) x 1 3/8" (3.56 cm) HWD DE: 4 1/16" (10.3 cm) x 1 5/16" (3.3 cm) x 1 3/8" (3.5 cm) HWD
Weight:	US: 2.26 oz. (0.064 kg) DE: 1.71 oz. (0.0484 kg)
Color Schemes:	The US wallplates are available in three color schemes: Black (B), White (W), and Brushed Aluminum (AL). Decora wallplates are available in Black (B), and White (W).
Certifications:	FCC Class B, CE, and IEC60950
Included Accessories:	UPX-HDMI+A HDMI Pass-through Universal Transmitter Wallplate Installation Guide (93-1402-53)

Mounting Specifications

Refer to the following images for dimensions of the wallplates:

US Wallplate Dimensions

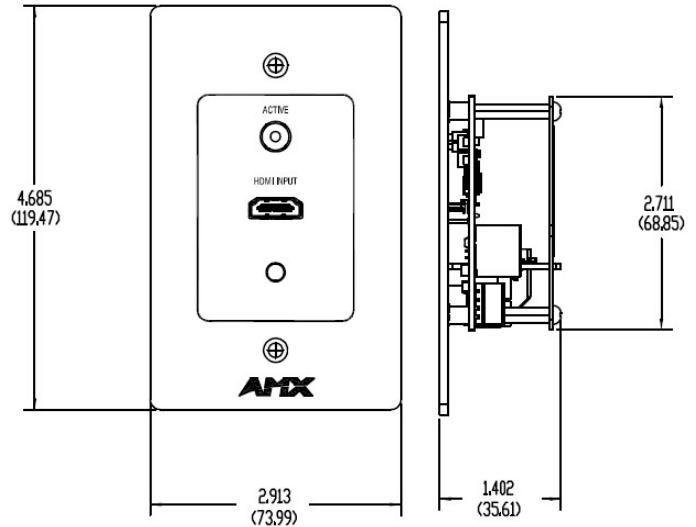


FIG. 2 US WALLPLATE DIMENSIONS

Decora Wallplate Dimensions

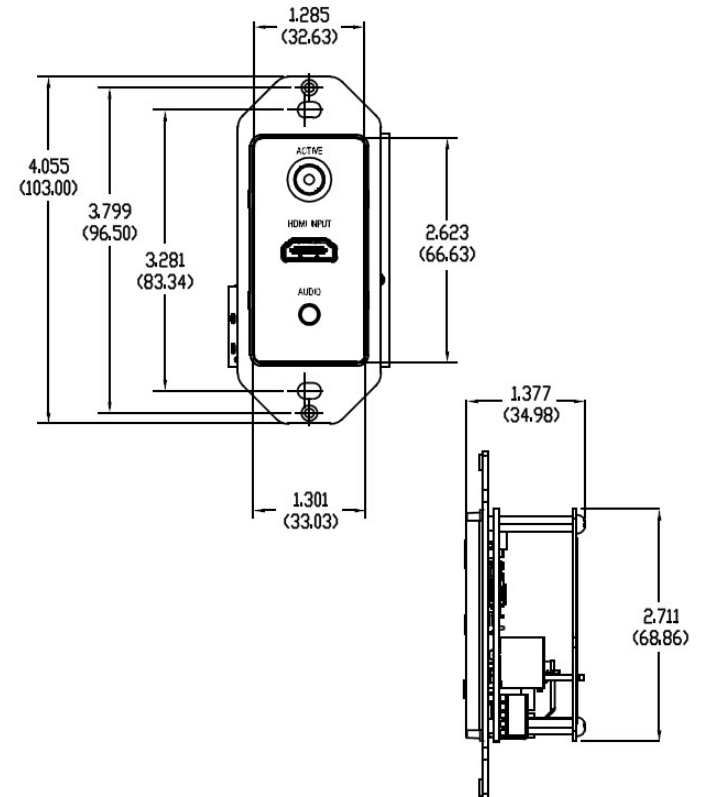


FIG. 3 DECORA WALLPLATE DIMENSIONS

Connections and Wiring

The following sections describe the connections available on the UPX-HDMI+A wallplate.

Front Panel Connections

The UPX-HDMI+A wallplate features an Active pushbutton and two connectors on the front panel for connecting to source devices.

- The Active button can be configured to automatically switch to a newly detected source or toggle between inputs. See the *AVX-400 Twisted Pair Presentation Switcher Operation/Reference Guide* for information on configuring the button action.
- The HDMI connector uses a standard HDMI cable to connect the wallplate to a source device.
- The Stereo mini-jack connects to an audio source. The audio signal from this connection is carried via Cat-5 cable to the AVX-400 or DVX-2100HD.

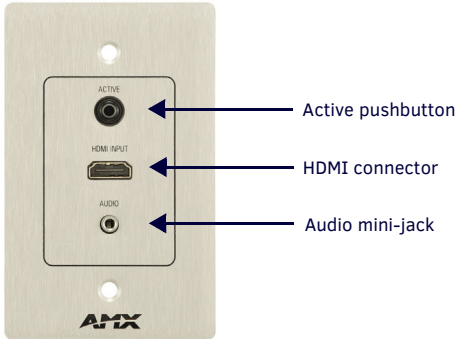


FIG. 4 UPX-HDMI+A WALLPLATE (FRONT-VIEW)

Rear Panel Connections

The UPX-HDMI+A wallplate features two connectors on the rear panel of the unit for connections to an AVX-400 presentation switcher or DVX-2100HD presentation switcher and a projector.

- The RJ-45 connector uses Cat-5 cable to connect to the AVX-400 or DVX-2100HD for transmitting audio. The wallplate also receives power from the AVX-400 or DVX-2100HD through this connection. If you are connecting the wallplate to an AVX-400, connect the Cat-5 cable to a source input on the front panel of the unit. If you are connecting the wallplate to a DVX-2100HD, connect the Cat-5 cable to the UDM input on the rear panel of the unit.

Note: You can use only one HDMI wallplate per AVX-400.

- The HDMI connector uses a standard HDMI cable to connect the wallplate to a projector.

Note: You can use a maximum of 30 ft (9.14 m) of HDMI cable for connecting to the projector. Any greater cable length may result in diminished image quality, though some devices may be able to transmit a 1080p signal up with greater cable lengths without a noticeable change in quality.

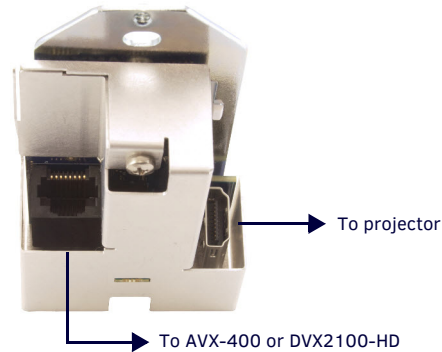


FIG. 5 UPX-HDMI+A WALLPLATE (REAR-VIEW)

Note: If you are using a standard single-gang back box with the UPX-HDMI+A wallplate, the HDMI cable you use on the HDMI connector on the rear panel of the wallplate must not be greater than 28AWG and must not have a ferrite core. A cable working outside of these parameters may not fit inside the back box. A thin, flexible cable also may provide for an easier fit. Barring these exceptions, the connector can otherwise be of standard size with standard pinouts.



Last Revised: 7/28/2015

© 2015 Harman. All rights reserved. Enova, AMX, AV FOR AN IT WORLD, and HARMAN, and their respective logos are registered trademarks of HARMAN. Oracle, Java and any other company or brand name referenced may be trademarks/registered trademarks of their respective companies.

AMX does not assume responsibility for errors or omissions. AMX also reserves the right to alter specifications without prior notice at any time. The AMX Warranty and Return Policy and related documents can be viewed/downloaded at www.amx.com.

3000 RESEARCH DRIVE, RICHARDSON, TX 75082 AMX.com | 800.222.0193 | 469.624.8000 | +1.469.624.7400 | fax 469.624.7153

AMX (UK) LTD, AMX by HARMAN - Auster Road, Clifton Moor, York, YO30 4GD United Kingdom • +44 1904-343-100 • www.amx.com/eu/

93-1402-53 REV: D

