

For more detailed installation, configuration, programming, file transfer, and operating instructions for the NXD-500i, refer to the *NXD-500i Instruction Manual*, available online at www.amx.com.



FIG. 1 NXA-BEZIP-500-BL 5" Portrait Bezel for the NXD-500i Touch Panel

Overview

The NXA-BEZIP-500xx is a kit solution that allows the NXD-500i to be installed in portrait mode, where the vertical dimension of the touch screen is larger than the horizontal, instead of its traditional landscape mode. The NXA-BEZIP-500 is available in black (NXA-BEZIP-500-BL, **FG2261-10**) or silver (NXA-BEZIP-500-SL, **FG2261-11**).

Note: Use of the NXD-500i in portrait mode requires the latest versions of the TPDesign4 application and of the AMX NXD-500i landscape mode firmware, version 2.4.13 or higher. Both are available for download from www.amx.com.

Specifications

NXA-BEZIP-500 (FG2261-10/11) Specifications	
Dimensions (HWD):	• 4.15" x 5.59" x 0.50" (10.54 cm x 14.20 cm x 1.27 cm)
Weight:	• 0.10 lbs (45.36 g)
Included Accessories:	• NXA-BEZIP-500 Installation Guide (93-2261-01)
Other AMX Equipment:	• NXD-500i (FG2261-02) • CB-TP5i Rough-In/Wallbox (FG038-11) • Back Cover for the CB-TP5i Rough-In/Wallbox (FG038-12)

Front Bezel Button

The NXD-500i has only one button on the front of the device, in the center right of the button trim ring. This button has several uses:

- Press the button once to start a previously programmed function, or to turn off the display if not previously programmed.
- Press and hold the button for 6 seconds to put the device into *Setup Mode*.
- Press and hold the button for 9 seconds to enter *Calibration Mode*.
- Press and hold the button for 20 seconds to reboot the panel.

Installation of the NXA-BEZIP-500

The NXD-500i can be installed either directly into the (optional) CB-TP5i Rough-In Box or another solid surface environment, using either solid surface screws or the included locking tabs for different mounting options. For more information, please refer to the *NXD-500i User Manual*, available at www.amx.com.

The NXD-500i is contained within a clear outer housing known as the back box (FIG. 2). This back box is removed when installing the device into a wall or into a Rough-In Box.

Removing the Bezel

In order for the NXD-500i to be used in portrait mode, the existing bezel must be removed and replaced with the bezel from the Portrait Bezel Kit. Because the device is installed against a wall, the bezel must be removed carefully to prevent the two prongs at the top of the device from being broken. To remove the bezel:

1. Hold the NXD-500i with the AMX logo on the bezel at the top. Gently lift up on the installed bezel from the bottom. Do NOT pull up from the sides or the top.
2. Let the bezel fall forward from the top of the device and let it pivot from the bottom of the device.
3. Remove the bezel from the two bottom prongs.

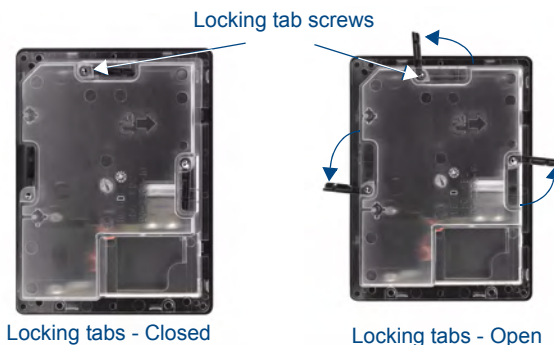


FIG. 2 NXD-500i backbox with closed and open locking tabs

4. Install the NXD-500i into its intended location (refer to the installation instructions below for more information).
5. With the NXD-500i in its intended portrait position, place the NXA-BEZIP-500 bezel on the device, gently hooking the prongs on the bezel on both the left and right sides. Gently push the bezel to the right to lock it into place.
6. When reattaching the portrait bezel to the device, make sure to align the Microphone, Light, and PIR Motion sensor locations on the device to their respective openings on the bezel assembly.

Installing the NXD-500i into a wall in Portrait Mode

The NXD-500i comes with a clear plastic backbox (FIG. 2) designed to attach the panel to most standard wall materials. This backbox has a locking tab on three of the four faces (missing only on the face containing the space for the connections) to help lock the backbox to the wall. These locking tabs are only extended AFTER the backbox is inserted into the wall.

WARNING: When installing the backbox, make sure that the assembly is in the correct position and in the correct place. Once the locking tabs are extended and locked into place, removing the backbox may be difficult without having access to the back of the wall or causing damage to the wall.

Note: In order to guarantee a stable installation of the NXD-500i, the thickness of the wall material must be a minimum of .50 inches (1.27cm) and a maximum of .875 inches (2.22cm).

WARNING: The maximum recommended torque to screw in the locking tabs on the plastic back box is 105 IN-OZ [74 N-CM]. Applying excessive torque while tightening the tab screws, such as with powered screwdrivers, can strip out the locking tabs or damage the plastic back box.

1. Prepare the area by removing any screws or nails from the drywall before beginning the cutout process.
2. Cut out the surface for the back box. Refer to the dimensions in the *NXCD-500i User Manual*, available from www.amx.com, for more information.
- CAUTION:** Making sure that the actual cutout opening be slightly smaller than the provided dimensions is highly recommended. This action provides the installer with a margin for error if the opening needs to be expanded. Too little wall material removed is always better than too much.
3. Remove the bezel from the NXD-500i.
4. Gently unscrew the two screws attaching the NXD-500i to its back box. These are at the bottom of the device, underneath the touch screen. Carefully remove the NXD-500i from the back box.
- NOTE:** While the screws are loosened, you can adjust the LCD to ensure it is parallel to the sides of the backbox, if necessary. While adjusting the LCD is possible, it is not required in most cases.
5. Thread the incoming Ethernet and mini-USB wiring (if mini-USB access is desired) from their terminal locations through the surface opening. Leave enough slack in the wiring to accommodate any re-positioning of the panel.
6. Push the back box into the wall opening. Insure that the locking tabs lie flush against the back box. Make sure that the terminal locations are at the bottom of the installation, with the bezel button to the right and the AMX logo at the top.
7. Extend the locking tabs on the sides of the back box by tightening the screws inside the box until snug. Not all of the tabs must be extended to lock the back box in place, but extending a minimum of the left and right tabs is highly recommended. Apply enough pressure to the screw head to keep the box flush with the wall: this ensures that the locking tabs will

tighten up against the inside of the wall.

The back box is clear to allow visual confirmation that the tabs have been extended and are gripping the wall, as well as in assisting with removal if necessary

8. Insert both connectors into their corresponding locations along the bottom of the NXD-500i touch panel.
9. Test the incoming wiring by attaching the panel connections to their terminal locations and applying power via the PoE Injector. Verify that the panel is receiving power and functioning properly to prevent repetition of the installation.

NOTE: Do not disconnect the connectors from the touch panel. The unit must be installed with the attached connectors before being inserted into the drywall.

10. Insert the NXD-500i back into the back box.
11. The microphone cable is taped to the back box. Connect the microphone cable to its connector, making sure that the cable does not interfere with reattachment of the bezel.
12. Carefully replace the two Plastite screws holding the device to the back box.
13. Place the bezel assembly back onto the device. Make sure to align the Microphone, Light, and PIR Motion sensor locations to their respective openings on the bezel.
14. Reconnect the terminal Ethernet and USB to their respective locations on either the Ethernet port or NetLinX Master.

Installing the NXD-500i into a Flat Surface using #4 screws

Three #4 mounting screws (not included) are secured through circular holes located at the left and right sides of the NXD-500i. The most important thing to remember when mounting the NXD-500i is that the outer frame (Mounting Tabs) must be installed flush against the mounting surface.

- Refer to SP-2261-02 for detailed installation dimensions.
- Cutting out the surface slightly smaller than what is outlined in the installation drawings, in order to make any necessary cutout adjustments, is highly recommended.

1. Prepare the area by removing any screws or nails from the surface before beginning the cutout process.
2. Cut out the surface for the NXD-500i.
3. Remove the bezel from the NXD-500i.
4. Gently unscrew the upper right-hand screw attaching the NXD-500i to its back box. This is at the right of the device, underneath the touch screen. Gently remove the NXD-500i from the back box.
5. Thread the incoming Ethernet and USB wiring from their terminal sources through the surface opening. Leave enough slack in the wiring to accommodate any re-positioning of the panel.
6. Connect the Ethernet and USB connectors to their corresponding locations along the bottom side of the un-powered NXD-500i touch panel. The USB connectors can be from either a USB extension cable or a wireless USB RF transmitter.

NOTE: Do not disconnect the connectors from the touch panel. The unit must be installed with the necessary connectors before being inserted into the solid surface.

7. Carefully slide the main unit into the cutout until the Mounting Tabs of the NXD-500i lie flush against the wall.
8. Insert and secure three #4 Mounting Screws (not included) into the corresponding holes located along the sides of the NXD-500i, using a grounded Phillips-head screwdriver, until the unit is secure and flush against the wall.
9. The microphone cable is taped to the back box. Connect the microphone cable to its connector, making sure that the cable does not interfere with reattachment of the bezel.
10. Carefully replace the two Plastite screws holding the device to the back box.
11. Place the bezel assembly back onto the device. *Make sure to align the Microphone, Light, and PIR Motion sensor locations to their respective openings on the front bbezel.*
12. Reconnect the terminal Ethernet and USB to their respective locations on either the Ethernet port or NetLinX Master.

