

# Photometric Report

ERA 400 – Narrow

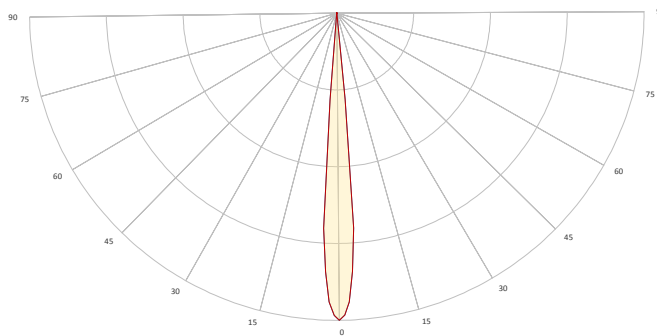
MARTIN PROFESSIONAL R&D OPTICAL LABORATORY

## GENERAL SPECIFICATIONS

Total Fixture Output:	10.000 lm
Light Engine Output:	24 klm
Efficacy:	20 Lumen/Watt
Lens Option:	N/A
Zoomrange:	10-30°
CRI:	72
CQS:	69
TM-30 Rf:	68
TM-30 Rg:	93
TLCI:	47
Color Temperature:	6700 K



## MEASUREMENT



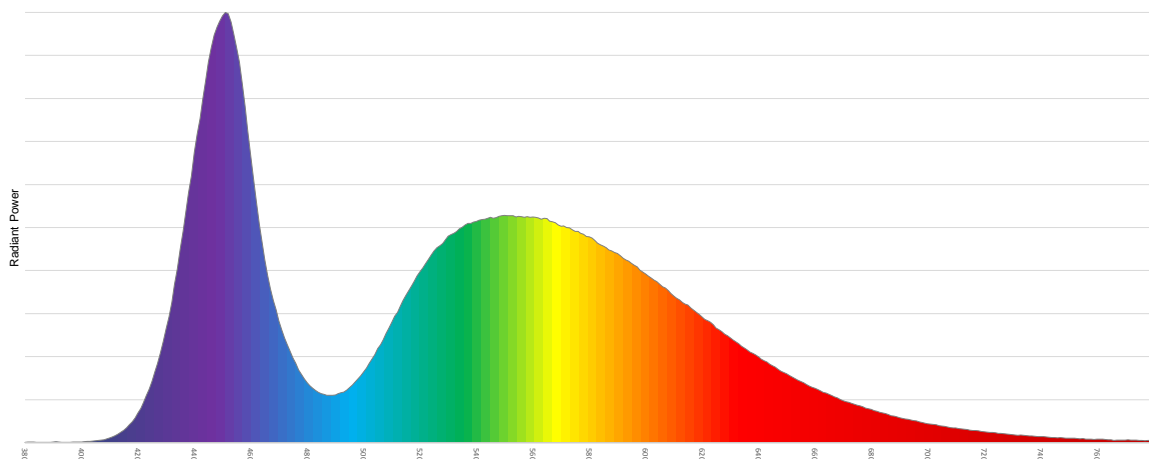
- Vertical - Horizontal

Catalog Number:	9025121796
Measured Output:	8719 lm
Measured Peak:	448832 cd
Consumed Power:	428,4 W
Efficacy:	20,4 Lm/Watt

Beam Angle (50%):	9,4°
Field Angle (10%):	10,4°
Cutoff Angle (3%):	11,1°

Measurement Condition:	
Ambient Temperature:	25° +/- 5° C
AC Supply:	230V/50Hz

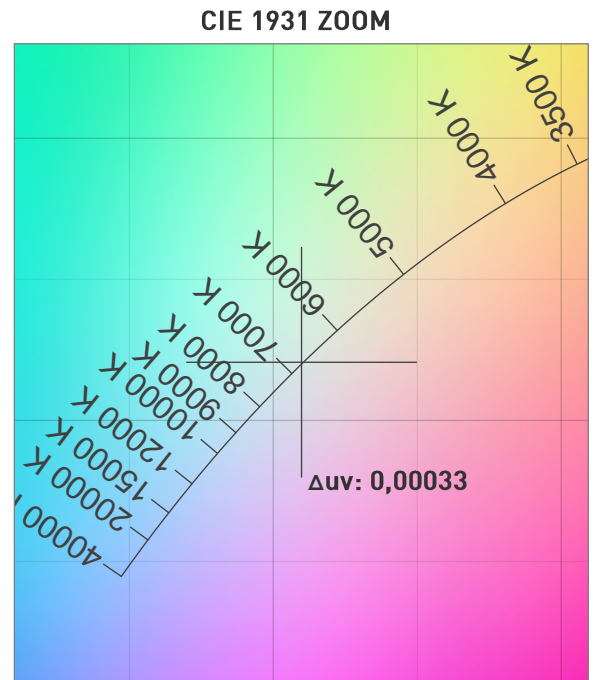
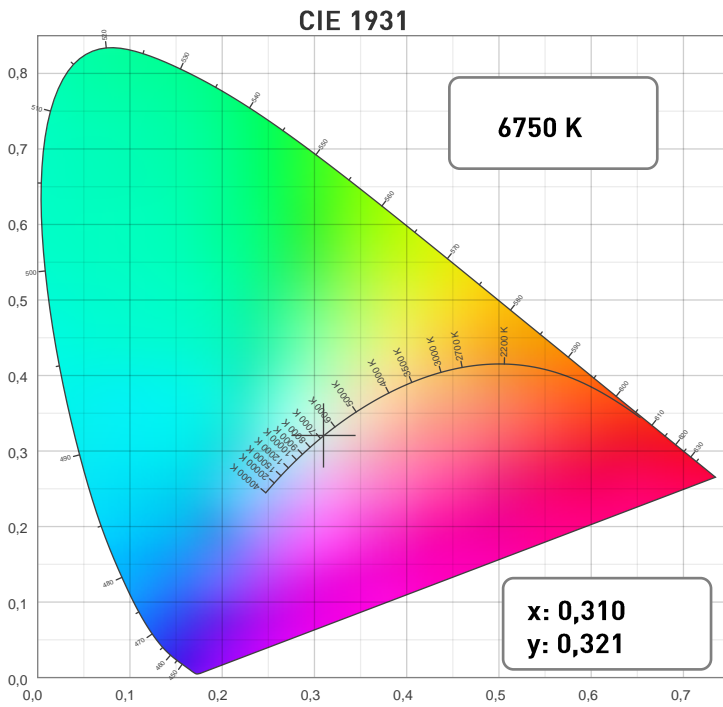
SPECTRAL DISTRIBUTION



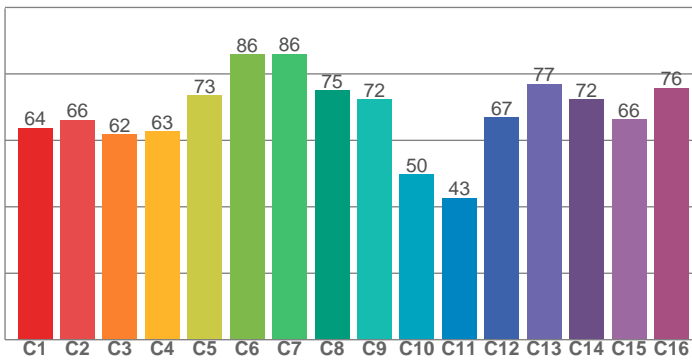
# Photometric Report

ERA 400 – Narrow

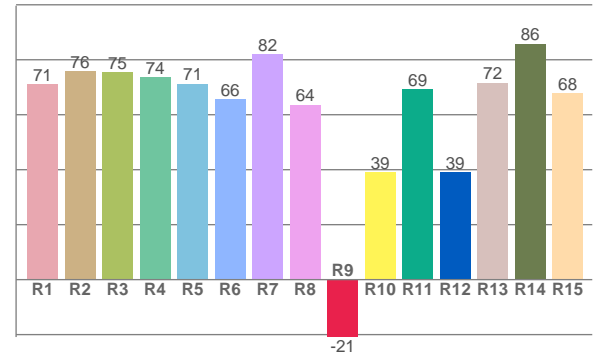
## CHROMATICITY



TM30: 68,4



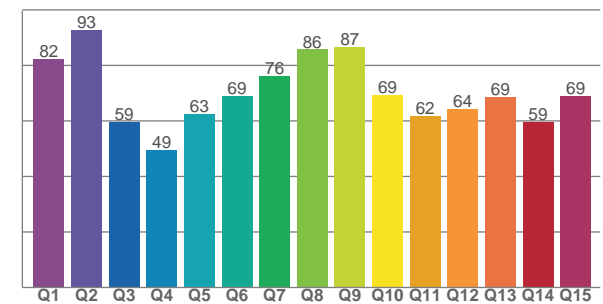
CRI: 72,3 (R1-R8)



## COLOR PARAMETERS

Color Temperature	Color Rendering Index	Red Component	Color Fidelity	Color Gamut
CCT	CRI	CRI R9	TM30 Rf	TM30 Rg
6750 K	72,3	-20,9	68,4	93,4

CQS: 68,3



Television Lighting Consistency Index	Color Quality Scale	Color Coordinate CIE 1931	Color Coordinate CIE 1931	Color Coordinate CIE 1964	Color Coordinate CIE 1964	Color Deviation from Black Body
TLCI	CQS	x	y	u	v	Δuv
47	68,3	0,310	0,321	0,199	0,309	0,00033

# Photometric Report

ERA 400 – Narrow

TM30

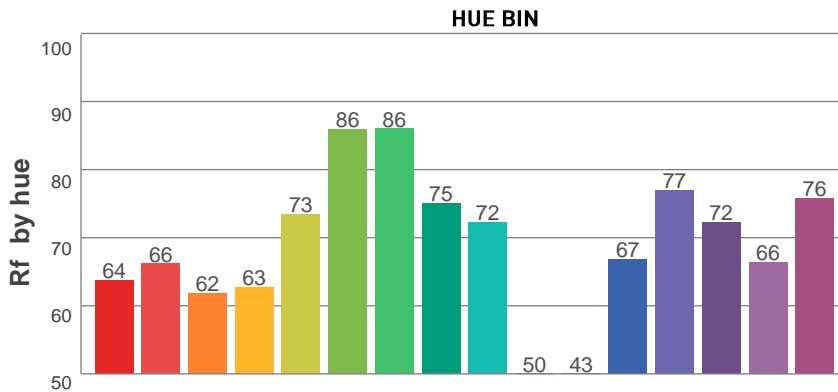
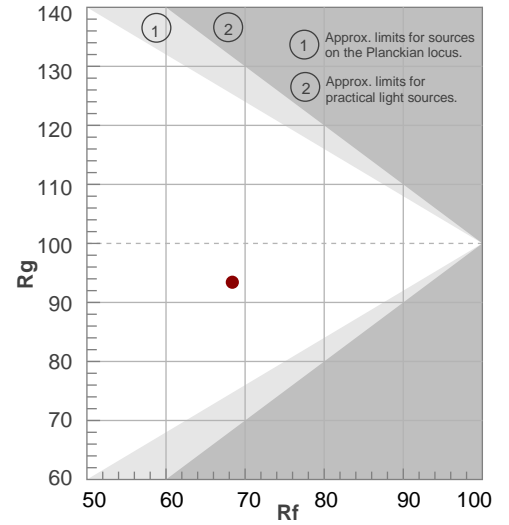
**Rf 68,4**

Fidelity index Rf

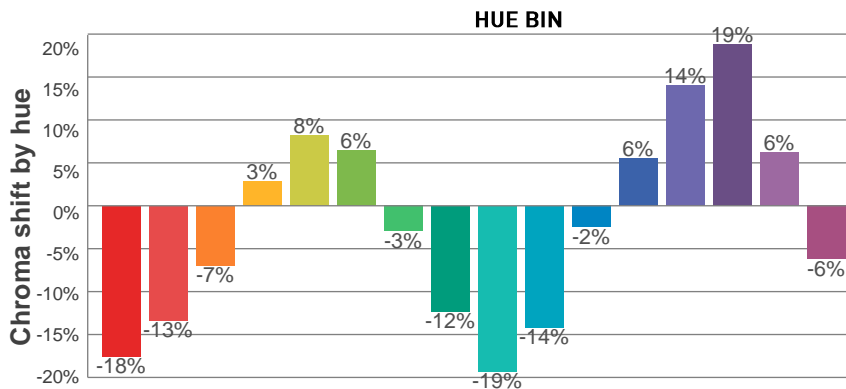
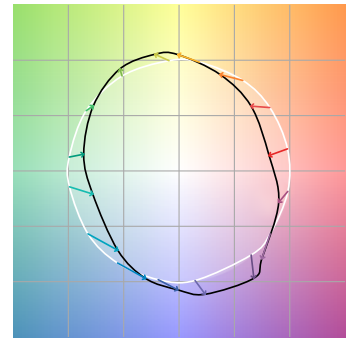
**Rg 93,4**

Gamut index Rg

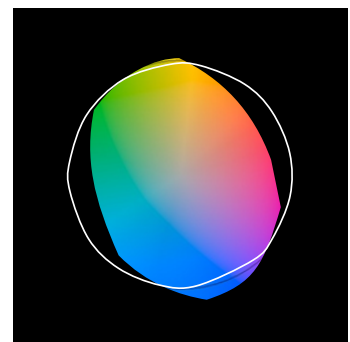
Hue Bin	R <sub>f</sub>	Graphic shifts (%)	
		Chroma	Hue
1	64	-18%	-3%
2	66	-13%	10%
3	62	-7%	20%
4	63	3%	20%
5	73	8%	11%
6	86	6%	-2%
7	86	-3%	-7%
8	75	-12%	-5%
9	72	-19%	11%
10	50	-14%	27%
11	43	-2%	29%
12	67	6%	19%
13	77	14%	7%
14	72	19%	-10%
15	66	6%	-23%
16	76	-6%	-11%



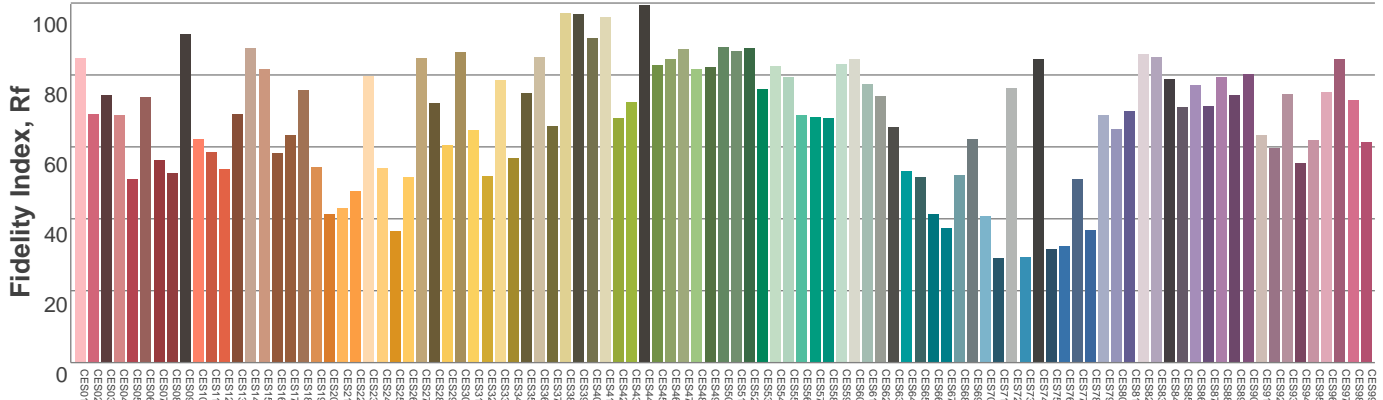
COLOR VECTOR GRAPHICS



COLOR DISTORTION GRAPHICS



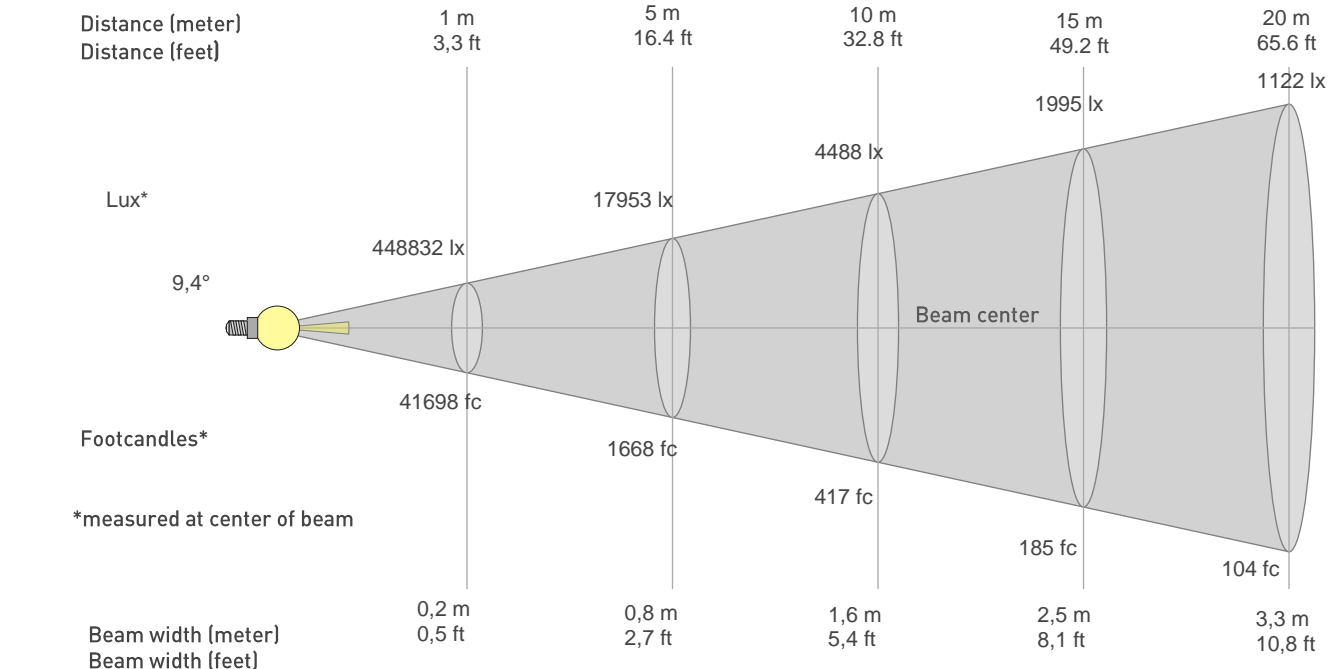
COLOR EVALUATION SAMPLE



# Photometric Report

ERA 400 – Narrow

## BEAM DETAILS

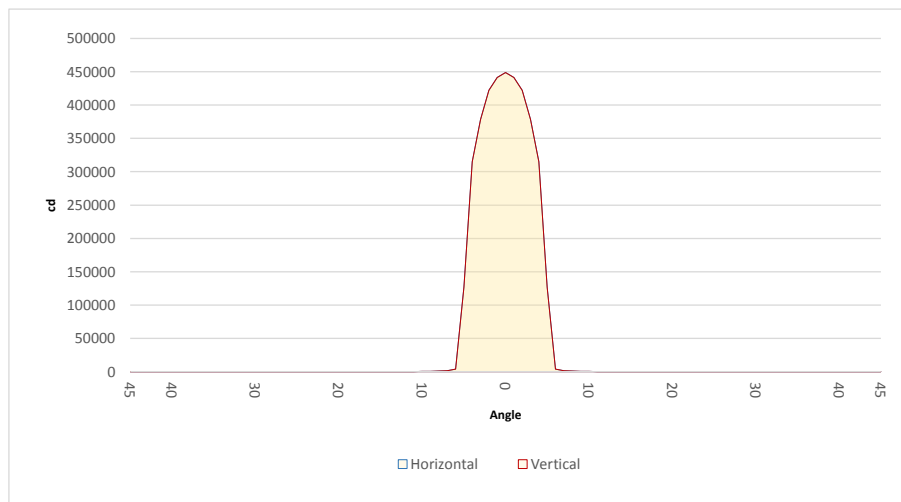


Beam width: = 0,2 \* distance  
Illuminance: = 448832 / (distance<sup>2</sup>)

distance in [m] for illuminance in [lux]    distance in [ft] for illuminance in [fc]

### BEAM ILLUMINANCE FROM 1-20M

1m	2m	3m	4m	5m	6m	7m	8m	9m	10m	11m	12m	13m	14m	15m	16m	17m	18m	19m	20m
3,3ft	6,6ft	9,8ft	13,1ft	16,4ft	19,7ft	23ft	26,2ft	29,5ft	32,8ft	36,1ft	39,4ft	42,7ft	45,9ft	49,2ft	52,5ft	55,8ft	59,1ft	62,3ft	65,6ft
448832lx	112208lx	49870lx	28052lx	17953lx	12468lx	9160lx	7013lx	5541lx	4488lx	3709lx	3117lx	2656lx	2290lx	1995lx	1753lx	1553lx	1385lx	1243lx	1122lx
41697,9fc	10424,5fc	4633,1fc	2606,1fc	1667,9fc	1158,3fc	851fc	651,5fc	514,8fc	417fc	344,6fc	289,6fc	246,7fc	212,7fc	185,3fc	162,9fc	144,3fc	128,7fc	115,5fc	104,2fc



BEAM ANGLE 50%	FIELD ANGLE 10%	CUTOFF ANGLE 3%
9,4°	10,4°	11,1°