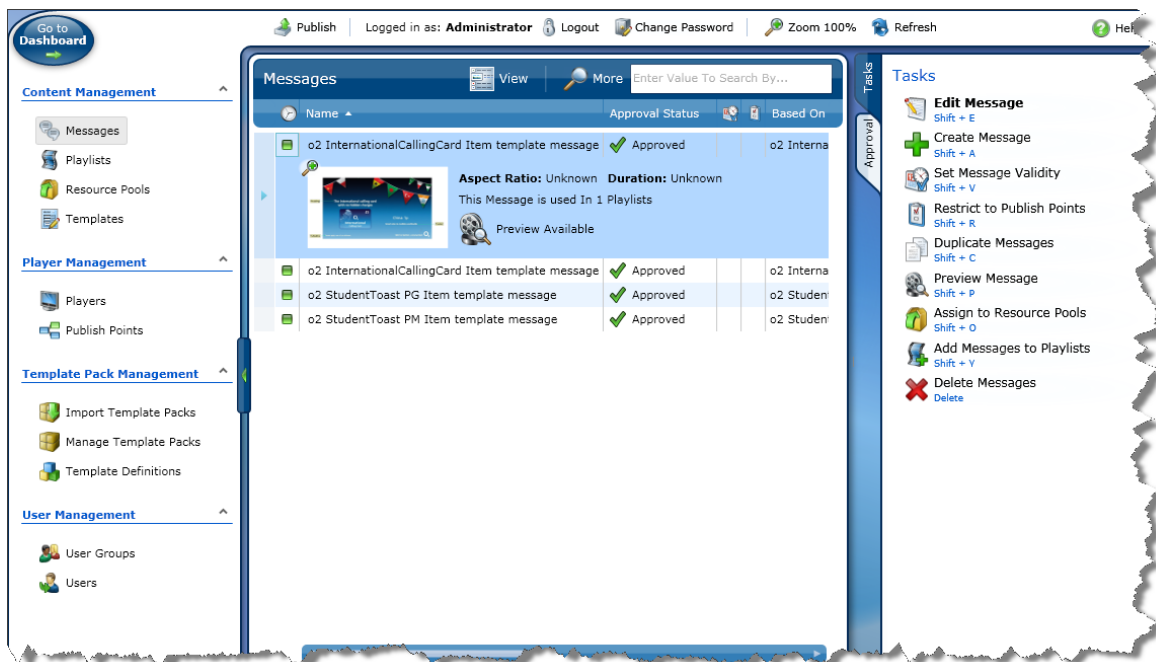




## UPGRADE GUIDE

# COMPOSER 5.X TO 5.6

## SERVER EDITION



## IMPORTANT SAFETY INSTRUCTIONS

1. READ these instructions.
2. KEEP these instructions.
3. HEED all warnings.
4. FOLLOW all instructions.
5. DO NOT use this apparatus near water.
6. CLEAN ONLY with dry cloth.
7. DO NOT block any ventilation openings. Install in accordance with the manufacturer's instructions.
8. DO NOT install near any heat sources such as radiators, heat registers, stoves, or other apparatus (including amplifiers) that produce heat.
9. DO NOT defeat the safety purpose of the polarized or grounding type plug. A polarized plug has two blades with one wider than the other. A grounding type plug has two blades and a third grounding prong. The wider blade or the third prong are provided for your safety. If the provided plug does not fit into your outlet, consult an electrician for replacement of the obsolete outlet.
10. PROTECT the power cord from being walked on or pinched, particularly at plugs, convenience receptacles, and the point where they exit from the apparatus.
11. ONLY USE attachments/accessories specified by the manufacturer.



12. USE ONLY with a cart, stand, tripod, bracket, or table specified by the manufacturer, or sold with the apparatus. When a cart is used, use caution when moving the cart/apparatus combination to avoid injury from tip-over.
13. UNPLUG this apparatus during lightning storms or when unused for long periods of time.
14. REFER all servicing to qualified service personnel. Servicing is required when the apparatus has been damaged in any way, such as power-supply cord or plug is damaged, liquid has been spilled or objects have fallen into the apparatus, the apparatus has been exposed to rain or moisture, does not operate normally, or has been dropped.
15. DO NOT expose this apparatus to dripping or splashing and ensure that no objects filled with liquids, such as vases, are placed on the apparatus.
16. To completely disconnect this apparatus from the AC Mains, disconnect the power supply cord plug from the AC receptacle.
17. Where the mains plug or an appliance coupler is used as the disconnect device, the disconnect device shall remain readily operable.
18. DO NOT overload wall outlets or extension cords beyond their rated capacity as this can cause electric shock or fire.



The exclamation point, within an equilateral triangle, is intended to alert the user to the presence of important operating and maintenance (servicing) instructions in the literature accompanying the product.



The lightning flash with arrowhead symbol within an equilateral triangle is intended to alert the user to the presence of uninsulated "dangerous voltage" within the product's enclosure that may be of sufficient magnitude to constitute a risk of electrical shock to persons.



ESD Warning: The icon to the left indicates text regarding potential danger associated with the discharge of static electricity from an outside source (such as human hands) into an integrated circuit, often resulting in damage to the circuit.

- WARNING:** To reduce the risk of fire or electrical shock, do not expose this apparatus to rain or moisture.
- WARNING:** No naked flame sources - such as candles - should be placed on the product.
- WARNING:** Equipment shall be connected to a MAINS socket outlet with a protective earthing connection.
- WARNING:** To reduce the risk of electric shock, grounding of the center pin of this plug must be maintained.

## COPYRIGHT NOTICE

AMX© 2015, all rights reserved. No part of this publication may be reproduced, stored in a retrieval system, or transmitted, in any form or by any means, electronic, mechanical, photocopying, recording, or otherwise, without the prior written permission of AMX. Copyright protection claimed extends to AMX hardware and software and includes all forms and matters copyrightable material and information now allowed by statutory or judicial law or herein after granted, including without limitation, material generated from the software programs which are displayed on the screen such as icons, screen display looks, etc. Reproduction or disassembly of embodied computer programs or algorithms is expressly prohibited.

## LIABILITY NOTICE

No patent liability is assumed with respect to the use of information contained herein. While every precaution has been taken in the preparation of this publication, AMX assumes no responsibility for error or omissions. No liability is assumed for damages resulting from the use of the information contained herein. Further, this publication and features described herein are subject to change without notice.

## AMX WARRANTY AND RETURN POLICY

The AMX Warranty and Return Policy and related documents can be viewed/downloaded at [www.amx.com](http://www.amx.com).

# Table of Contents

<b>Upgrade Composer 5.x to 5.6 .....</b>	<b>1</b>
<b>Backup Composer 5.x Files .....</b>	<b>1</b>
License Manager Entitlement .....	1
<b>Composer 5.x Uninstall Instructions .....</b>	<b>2</b>
<b>Notify Composer Users.....</b>	<b>2</b>
<b>Prerequisites .....</b>	<b>3</b>
<b>Overview .....</b>	<b>3</b>
<b>Register IIS .....</b>	<b>4</b>
<b>Install Composer 5.6 with Composer 5.x Information.....</b>	<b>4</b>
Erlang Installation .....	8
RabbitMQ Installation .....	12
Licensing Manager.....	15
<b>Notify Composer Users.....</b>	<b>16</b>
<b>Restore Back Up Files .....</b>	<b>16</b>
<b>Modify Web.config File .....</b>	<b>16</b>
<b>RabbitMQ Manual Edits.....</b>	<b>17</b>

# Upgrade Composer 5.x to 5.6

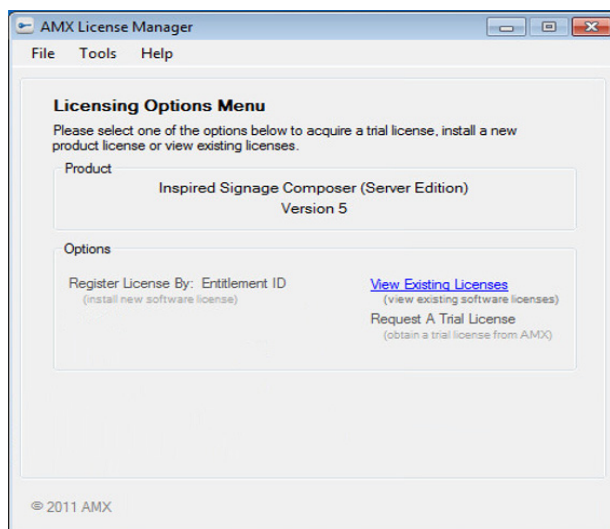
## Backup Composer 5.x Files

**NOTE:** Remove the bold (x86) text in a directory path below if on a 32 bit machine. Switch the bold Server text to Desktop if the Composer installation is a Desktop version.

- Copy these files to a location accessible both during and after the Composer 5.6 install process. Keep these files from your WIX Installation:
  - Web (C:\Program Files (x86)\AMX\Inspired Signage\Composer **Server**\Default\Web)  
Be sure to update this path as needed for your specific environment as noted above.
    - Directory: DataFiles
    - Directory: LocalPreviewFolder
    - Directory: TpkFiles
    - File: Web.config

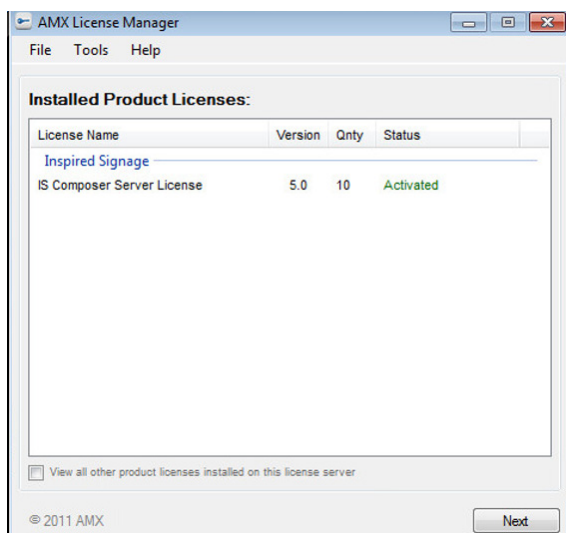
## License Manager Entitlement

- Open *AMX License Manager*.
- Click **View Existing Licenses**.



**FIG. 1** AMX License Manager - Licensing Options Menu

- Click **Tools > Select Entitlements** to open the Installed Product Licenses view (FIG. 2).



**FIG. 2** AMX License Manager - Installed Product Licenses

5. Write down the appropriate license from the displayed log.
6. Back up the Database if using a local instance of SQL (meaning the database exists on the same machine as the Composer installation). SQL Management Studio will be needed for this process.
  - AMX recommends following this walk through below if inexperienced using SQL Management Studio to perform database backups.

#### [Backup Walk-through](#)

- Perform a backup of both AMXComposerDatabase and PostOfficeServerDB.

**NOTE:** *Backing up the database and the entitlement is a precautionary measure. The backups will not be used in the upgrade procedure.*

## Composer 5.x Uninstall Instructions

1. Backup the existing Composer installation as described in *Backup Composer 5.x Files* on page 1.
2. Shut down Composer's Web Server by following either step 3 or step 4 below.
3. If not running IIS, stop the AMX Web Server - Default service.
  - a. Navigate to Windows Local Services by searching *Services* in the start menu.
  - b. Click on the service name to display the service controls to the left of the list of services.
  - c. Click the *Stop* command.

**NOTE:** *If the service was already stopped and disabled, then you are likely configured to run Composer using IIS. Follow the instructions below in this case.*

4. If running IIS, remove IIS Configuration.
  - a. Open the IIS Manager by searching *IIS* in the start menu search.
  - b. Delete the Composer application under "*IIS Instance Name*\Sites\Default Web Site."
  - c. From the *Application Pools* configuration page, delete the *Composer Application Pool*.
5. Navigate to the start menu shortcuts and run the uninstall shortcut there.
  - a. Start > All Programs > AMX Inspired Signage > Composer
6. Navigate to *Programs and Features* from the Windows Control Panel.
7. Right click and uninstall the following 3 applications:
  - *AMX Inspired Signage Composer Server v5.x.xx.xxx* (if applicable)
  - *AMX License Manager*
  - *Sentinel RMS License Manager 8.4.1*

In certain cases, uninstalling Composer will uninstall the other two applications. This is not always the case, so be sure to uninstall the other two applications if they are left behind. Also, in cases using a remote licensing server, only the first two applications will need to be uninstalled.

8. Reboot the machine.
9. Once rebooted delete the following:
  - Directory (remove the bold text if on a 32 bit machine)  
C:\Program Files (**x86**)\AMX\Inspired Signage
  - Shortcut Folder

*Start Menu\All Programs\AMX Inspired Signage*

## Notify Composer Users

Following the Composer upgrade, the link to Composer will now have a new path. If using the same machine that Composer is installed on, Composer can be accessed via this URL: *localhost\Composer*. Send out a memo notifying all Composer users to update their browser bookmarks to access Composer using the new URL: *MachineName\Composer*.

# Prerequisites

## Overview

Before installing Composer Server Suite, it is advised to ensure that all of the machines being used have the latest software. Go to <http://www.microsoft.com> and install high priority updates.

**NOTE:** *Anti-virus software will need to be disabled before install, and re-enabled once installation is complete.*

Next, ensure that the following are installed:

- All previous Composer versions should be removed. Go to *Composer 5.x Uninstall Instructions* on the page above for details.
- *Silverlight* (version 4.0 or higher) on any client PCs and the PC hosting Composer Server.  
<http://www.microsoft.com/getsilverlight/get-started/install/default.aspx>
- *Microsoft Installer* (version 4.5 or higher) on all PCs hosting the Composer Server Suite. This is pre installed on Windows 7.

<http://www.microsoft.com/download/en/details.aspx?displaylang=en&id=8483>

- *Microsoft .NET Framework* (4.0 or higher) on all PCs hosting the Composer Server Suite. You can install this component at the same time as installing SQL Server Express 2008 R2 Service Pack 2 using the *Microsoft Web Platform Installer*. Refer to the Composer Installation Manual on <http://www.amx.com> for details.

<http://www.microsoft.com/net>

- *Microsoft SQL Server* (Express or a Full Instance, either locally or on a remote machine, 2005 or higher). Refer to the Composer Installation Manual on <http://www.amx.com> for details.

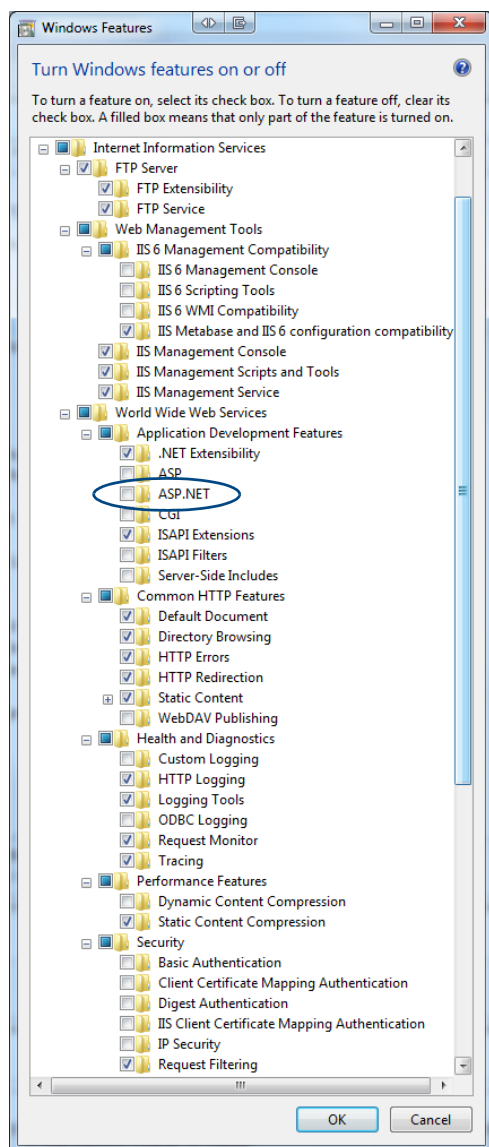
**NOTE:** *SQL Server Express 2008 R2 Service Pack 2 is preferred.*

- *WS-Management* (1.1 or higher) on the machine hosting SQL Server 2008/2005. This is preinstalled on Windows 7.  
<http://www.microsoft.com/download/en/details.aspx?id=21900>
- *Windows Powershell* (1.0 or higher) on the machine hosting SQL Server 2008/2005. This is preinstalled on Windows 7.  
<http://blogs.msdn.com/b/powershell/archive/2008/12/30/download-windows-powershell.aspx>  
This component can be installed at the same time as installing SQL Server Express 2008 R2 Service Pack 2 using the *Microsoft Web Platform Installer*. Refer to the Composer Installation Manual on <http://www.amx.com> for details.
- *Quicktime* and the MPEG 2 codec need to be installed on the machine hosting the Preview application along with any other video codecs desired, otherwise the preview feature will not work with files of these types. Note that the Microsoft DTV-DVD Video Decoder provided in Windows Vista and Windows 7, supports MPEG-2 Playback.
- *Internet Information Services* (IIS) 6.0.
- Registered with *.NET 4.0* (If installed and enabled before .NET 4.0, this happens automatically).

**NOTE:** *If for some reason, .NET was installed before IIS, the command prompt must be opened as administrator and run: "ASPNET\_REGIIS.EXE -i" from the Command Prompt with context focused at:*

**C:\WINDOWS\Microsoft.NET\Framework\v4.0.30319**

## Process for IIS V7.0 and Windows Server 2008



Install IIS as follows:

1. Click **Start > All Programs > Administrative Tools > Server Manager**.
2. In the *Server Manager* window, scroll down to Roles Summary, and then click **Add Roles**. The Add Roles Wizard will start with a "Before You Begin" page.
3. Check that this installation complies with the prerequisites.
4. Select *Web Server (IIS)* on the Select Server Roles page. An introductory page will open with links for further information.
5. In the *Select Role Services* window, set the **ASP.NET** check box.
6. The Add Roles Wizard will popup. Click **Add Required Role Services**.
7. Click **Next** to Continue.
8. Click **Install** to carry out the installation.

## Register IIS

Ensure that Microsoft.NET 4 or later version has been installed.

1. Run the following command from the command line:

**ASPNET\_REGIIS.EXE -i** located in **C:\WINDOWS\Microsoft.NET\Framework\v4.0.30319**

**NOTE:** The v4.0.30319 part must be modified to correspond to the version of .NET installed).

## Install Composer 5.6 with Composer 5.x Information

The steps below specify the upgrade actions that need to be performed during a standard Composer 5.6 upgrade.

**NOTE:** If *Composer Desktop* was uninstalled above, then you will need a new license entitlement for *Composer Server*.

The installer EXE will appear as: *ComposerSetup\_v5.6.\*\*\*\*.exe*.

1. Before running the Advanced Installer (AI), find the Database Connection Strings in the **Web.config** file from Composer 5.x. These can easily be found by searching in a preferred text editor and looking for the database names. There are two Connection Strings that are stored next to one another in the Web.config, and you will need to save them both.

- Database Name: **AMXComposerDatabase**
- Database Name: **AMXPostOfficeDatabase**

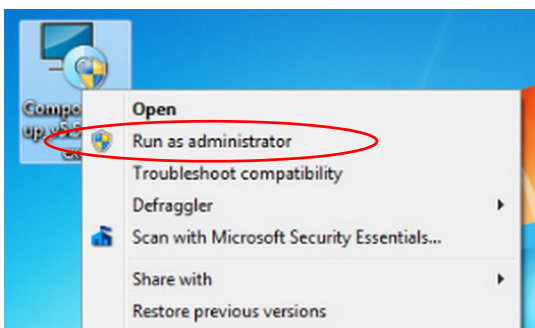
They will appear in the following format:

```
<add name="Database Name" connectionString="Connection String" ... />
```

Save the *Connection String* portion of the line in the Web.config. A Connection String example is shown below:

Data Source=localhost\SQLEXPRESS;Initial Catalog=**AMXComposerDatabase**;Integrated Security=True

2. Right click and launch **ComposerSetup\_v5.6.\*\*\*.exe** as administrator.



**FIG. 3** Microsoft Run Menu

3. Click **Next** as prompted.



**FIG. 4** AMX Composer Setup - Welcome Screen

4. The following dialog will appear indicating that a Composer installation predating Composer 5.6 was found on the system. Follow the upgrade path for your installation.



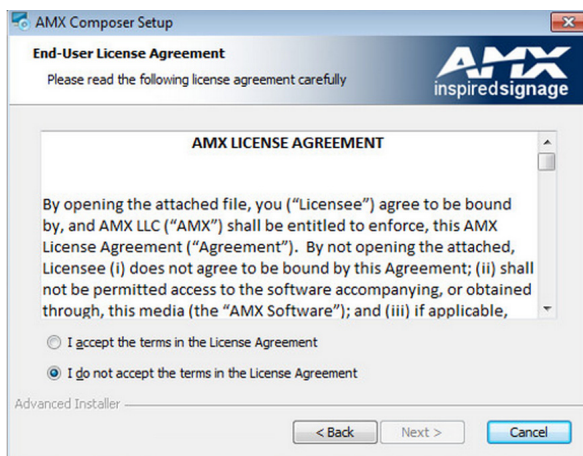
**FIG. 5** Previous Composer Version Found - Error Message

5. Below is an example of the Windows Navigation Bar as it looks with the installer currently running. Throughout this walk-through, similar images will appear to help aid the user installing Composer. At certain times during the installation process, additional dialogs will launch but not always on top of the main installation window. If the icon for the new window is seen in the Navigation Bar, and it has not been launched on top of the main window, please select the additional dialog to continue.



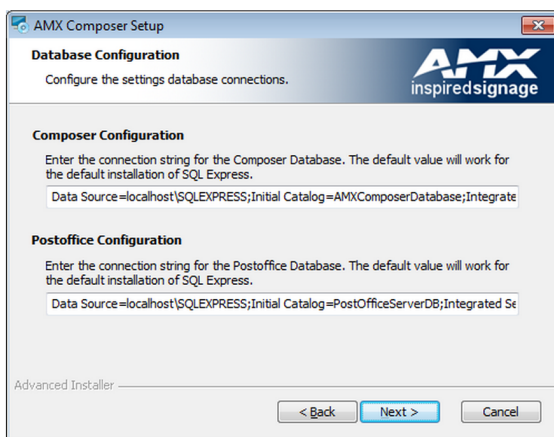
**FIG. 6** Windows Navigation Bar with Installer Running

6. Review and accept the *AMX LICENSE AGREEMENT*. Click *Next* to continue.



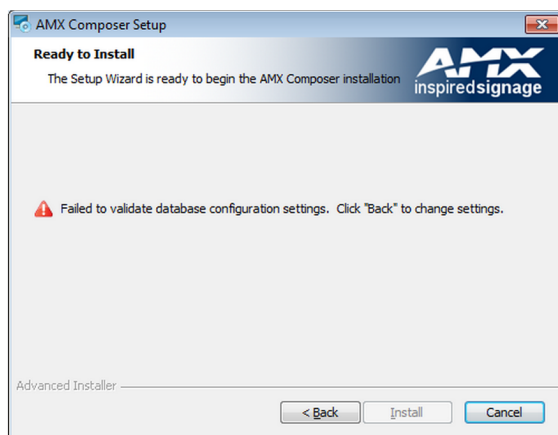
**FIG. 7** AMX License Agreement

7. In the *Database Configuration* dialog, provide the captured connection strings from Step 1 on page 1.
- If invalid information is entered (meaning a SQL connection cannot be established), the installer will notify you which string is incorrect before letting you proceed. In this case, click “Back” to resolve the problem.
  - Click **Next** to test the strings for validity.



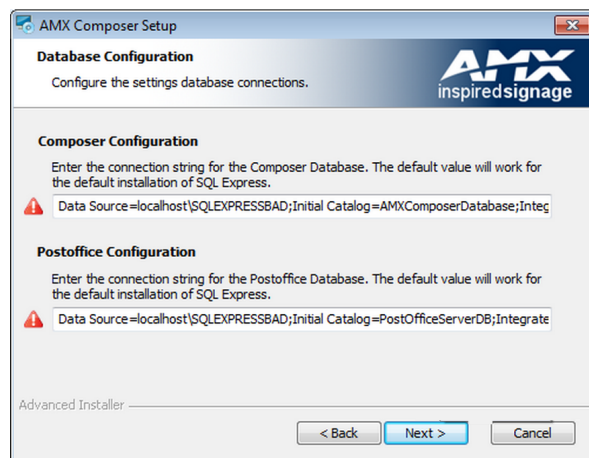
**FIG. 8** AMX Composer Setup

8. The following image shows that one or both of the Database Configuration connection strings failed validation. Click **Back** to resolve the problem.



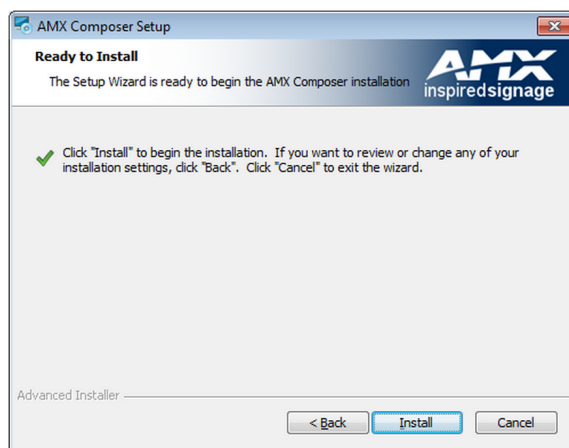
**FIG. 9** Composer Validation Error

9. The *Database Configuration* dialog identifies which Database Connection String failed validation. In the example provided in FIG. 10, both failed validation. Correct them and click **Next** to validate again. This process will continue until a good definition has been entered.



**FIG. 10** Database Configuration

10. Once the Database Configuration passes validation, click **Install** to continue with the installation of Composer.



**FIG. 11** Ready to Install

11. The progress of the installation is indicated in the Installing AMX Composer dialog.
12. As the installer reaches the final portions of the main installation sequence, it will hold on the *Configuring Internet Information Services* status. Additional installer tasks are being performed. Please wait patiently as they execute.

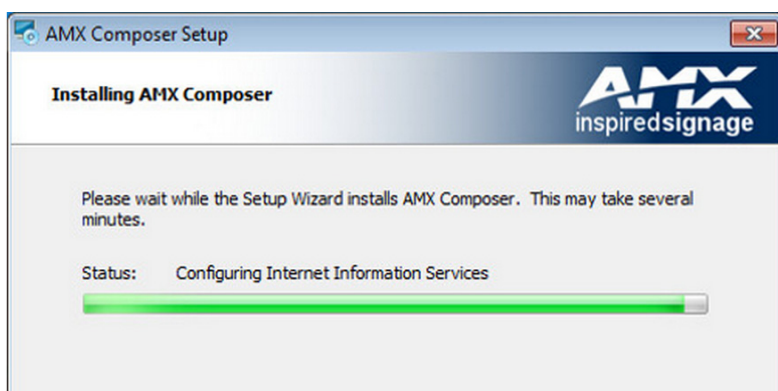


FIG. 12 Installing Composer

13. This pop up is the first in a series of final installer tasks that will be performed. The main sequence has completed and the installer is completing final configurations.

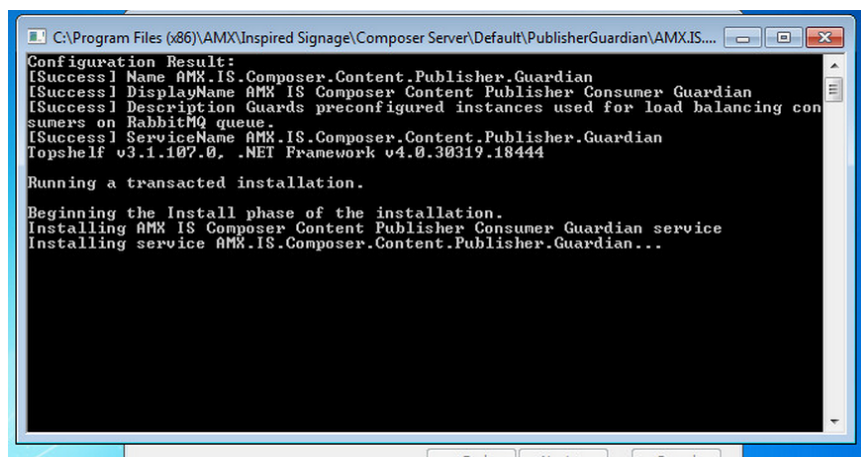


FIG. 13 Configuration Results

## Erlang Installation

Composer's publishing mechanism has a dependency on RabbitMQ Server. Rabbit has a dependency on the Erlang Language Pack ("OTP R 16803-1"). In order to complete the Composer installation with an existing version of Composer 5.x, these two dependencies must be present on the PC running Composer.

1. Ensure that everything is selected as shown below before proceeding with the Erlang installation. If Erlang is already installed on your machine ignore Step 1 through Step 8.

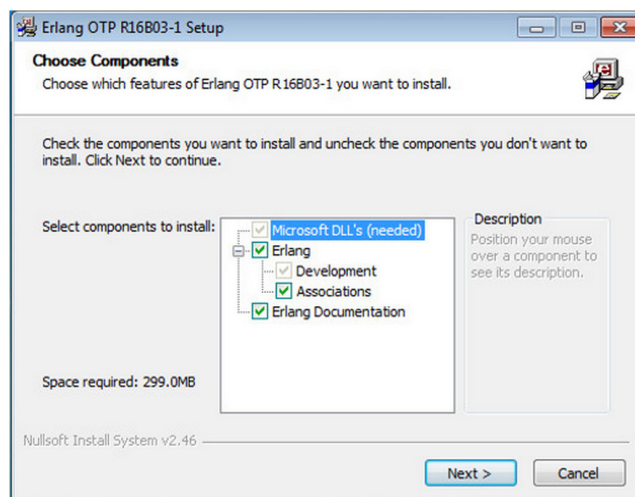
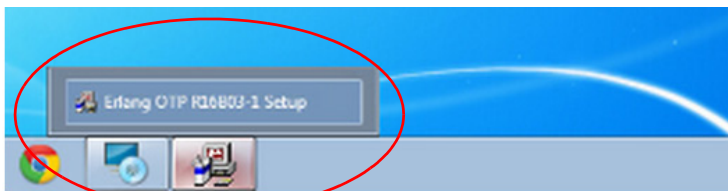


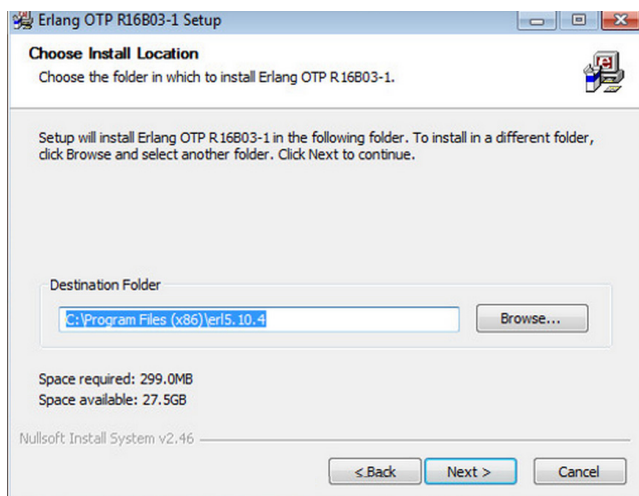
FIG. 14 Choose Components

- Here is an example of what the Windows Navigation Bar will look like. If the Erlang setup dialog does not pop up in front of the Composer window, select it from the Navigation Bar.



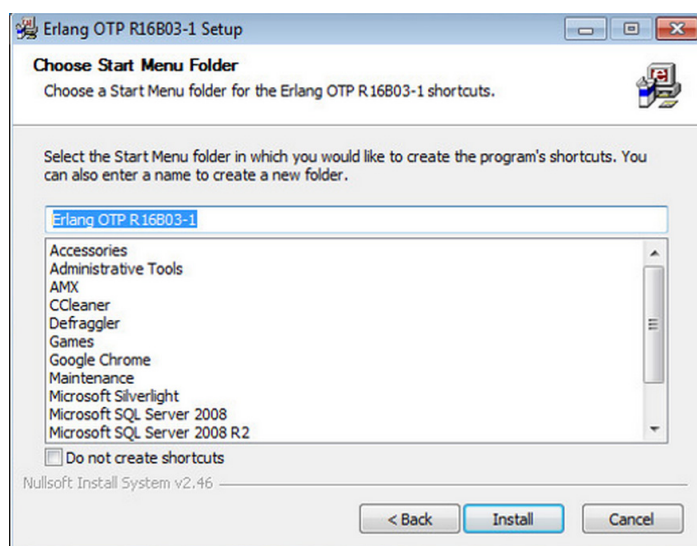
**FIG. 15** Windows Navigation Bar

- In the *Choose Install Location* dialog, set the Destination Folder for this installation. In most cases, the default target directory (C:\Program Files (x86)\er15.10.4) should be used.



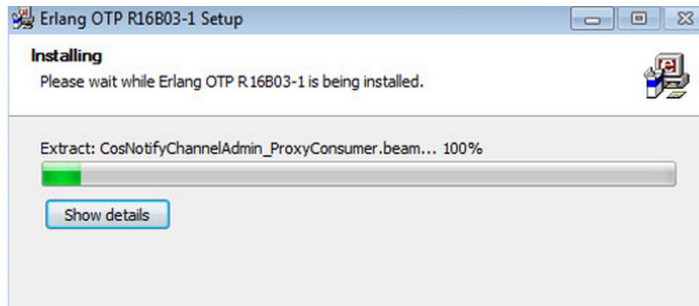
**FIG. 16** Choose Install Location

- Erlang requests setting the Start Menu folder first. In most cases, the default target directory should be used.



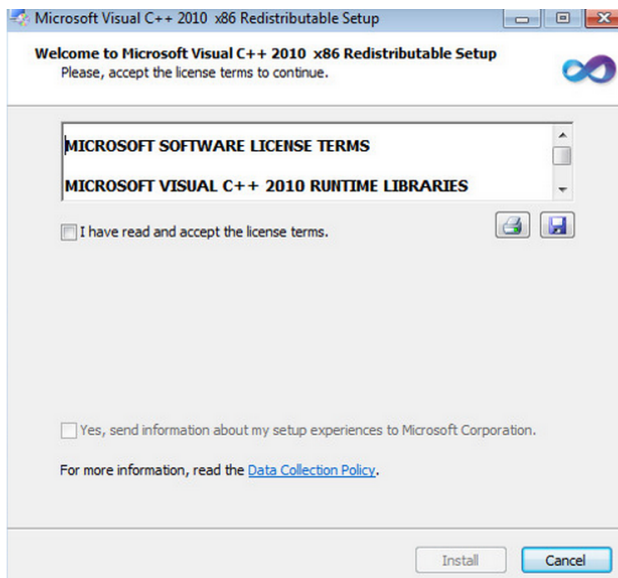
**FIG. 17** Choose Start Menu Folder

- As Erlang installs, it checks to see if C++ libraries that it needs to be able to run are in place. If so, the system will go directly to Step 10.



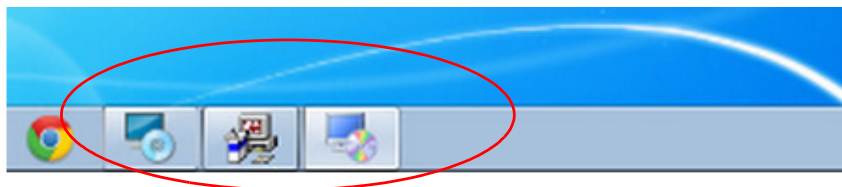
**FIG. 18** Erlang Installing

- The C++ Redistributable Setup will launch if it is not already installed. This is an Erlang dependency. In order to proceed, click the check box to accept the license terms and select **Install**.



**FIG. 19** Visual C++ Welcome Screen

- This is how the Navigation Bar looks in the event the C++ Redistributable is launched.



**FIG. 20** Navigation Bar View

8. The C++ installation runs fairly quickly in comparison to Erlang.

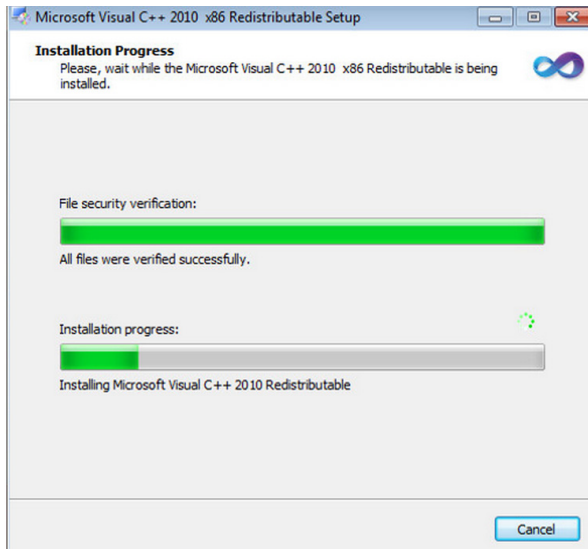


FIG. 21 Visual C++ Installing

9. After the C++ installation is completed, click **Finish** to close its installer and Erlang will recommence.

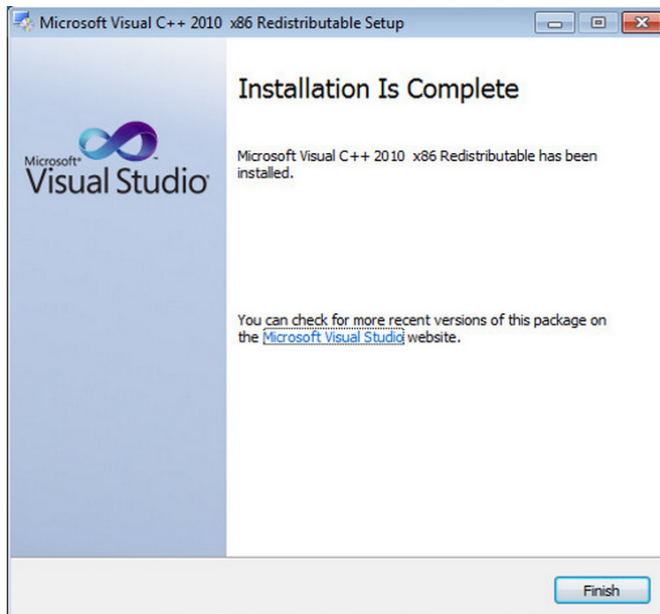
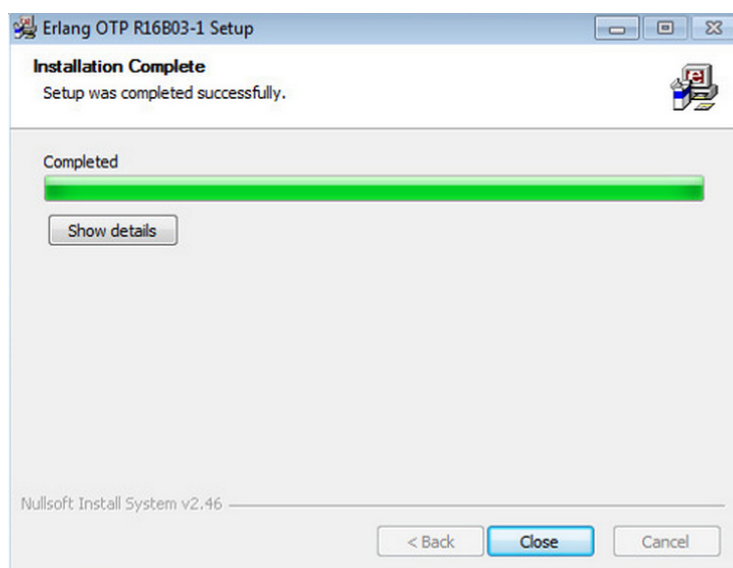


FIG. 22 C++ Installation Complete Dialog

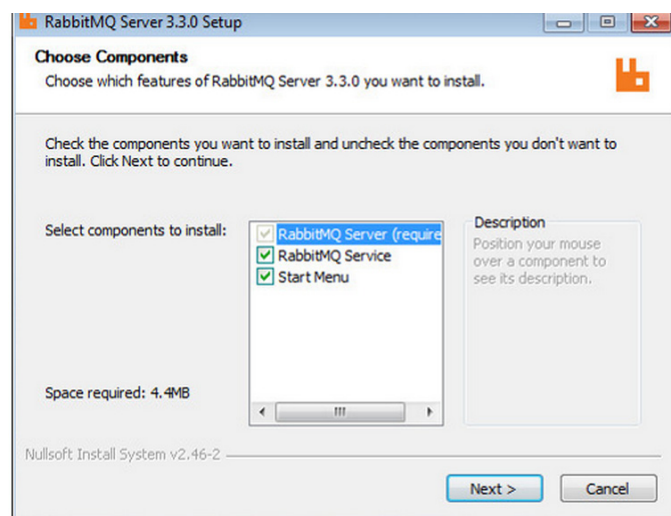
10. When Erlang is done installing, click **Close** to exit the installer and continue with Composer and its dependencies.



**FIG. 23** Erlang installation Complete

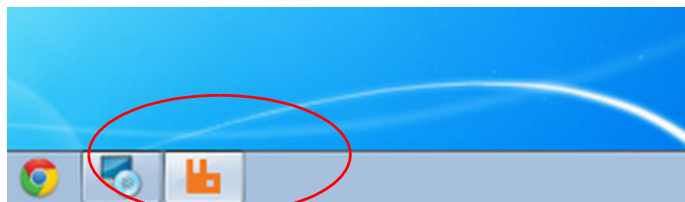
## RabbitMQ Installation

1. RabbitMQ's installation will launch after Erlang's installer is closed. The *Start Menu* folder is optional. The RabbitMQ Service is required. Ensure that option is selected before clicking **Next**. If RabbitMQ is already present on this machine, ignore this section and go to *Licensing Manager* on page 15.



**FIG. 24** RabbitMQ Server Setup - Choose Components

2. FIG. 25 shows an example of the Windows Navigation Bar with RabbitMQ running.



**FIG. 25** Navigation Bar with RabbitMQ Running\

3. RabbitMQ requests defining the Destination Folder. It is recommended to leave this as the default value provided. If this directory is changed, other configuration changes in the installer will be affected.

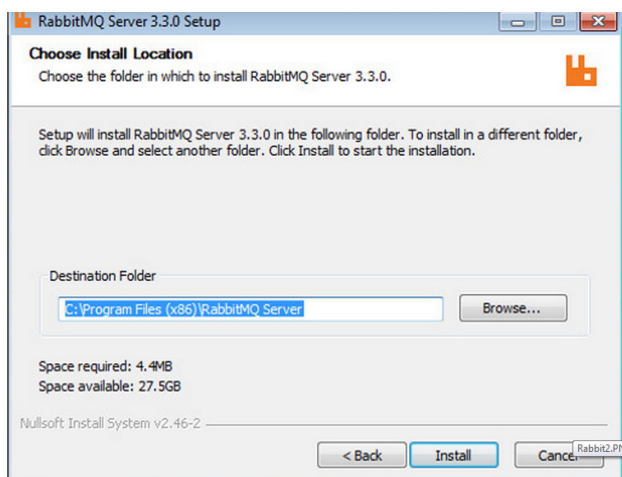


FIG. 26 RabbitMQ Server Setup - Choose Install Location

4. Click **Install** to begin the installation. Progress is indicated in the Installing dialog (FIG. 27). RabbitMQ installs much quicker than Erlang or Composer. Simply wait for it to complete, and then continue.

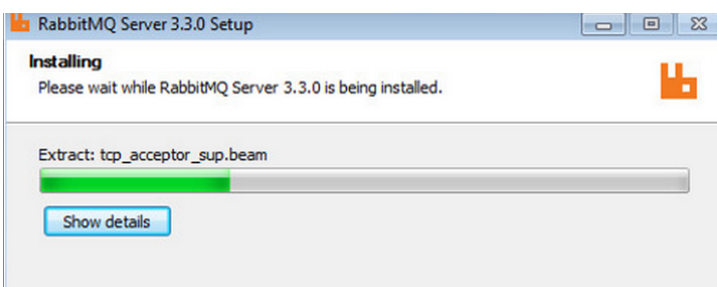


FIG. 27 Installer Status Bar

5. Windows may require security permissions be given to RabbitMQ and Erlang based on your security settings. Please allow any Windows Firewall permission queries.



FIG. 28 Security Alert

6. When finished, click **Finish** to close out RabbitMQ's installer to continue with the Composer installation.

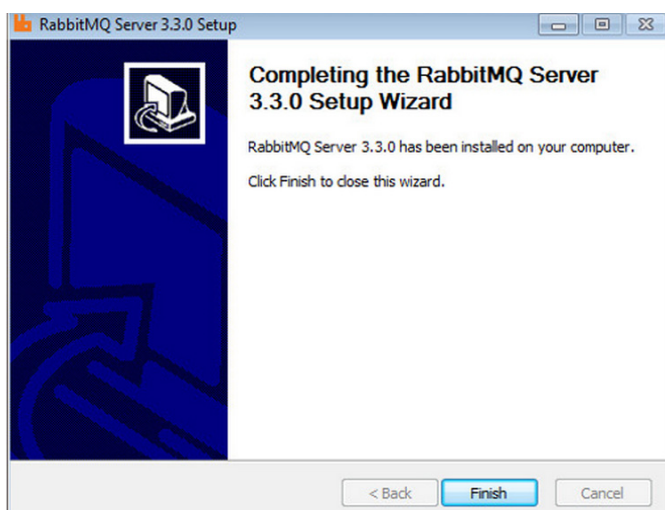


FIG. 29 RabbitMQ Server Setup Complete

7. If RabbitMQ's destination folder was left as the default, the command prompt will be launched and close automatically. If the directory has been changed, additional steps will be required to configure RabbitMQ. Refer to *RabbitMQ Manual Edits* on page 17, otherwise continue with *Licensing Manager* on page 15.

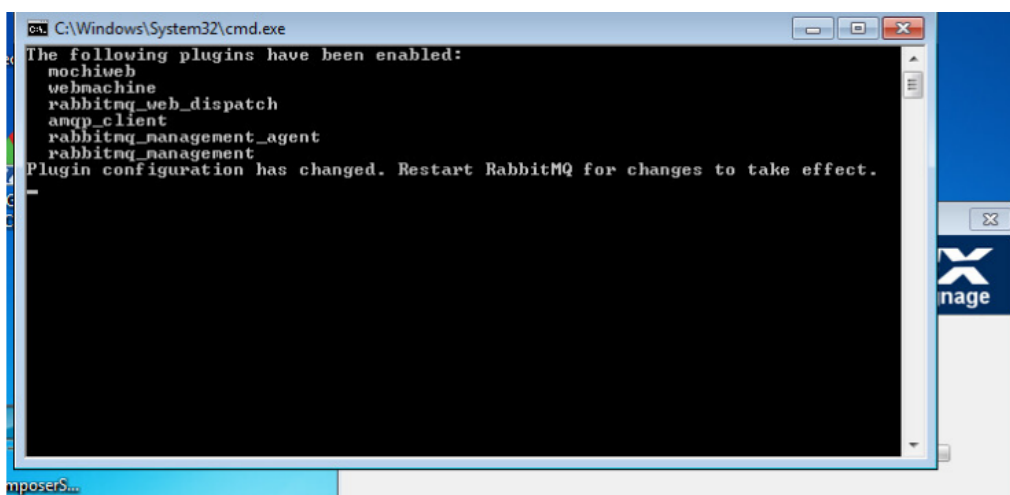


FIG. 30 Command Prompt Window for Default Destination Folder

## Licensing Manager

1. The AMX Licensing Manager will launch automatically to either create a new entitlement for this Composer installation, or in the event of an upgrade, it will use the existing license. Use an existing entitlement for Composer as it will not have been removed during the uninstall process unless previously using it on a Desktop version of Composer. If this is the case, contact AMX Customer Support at 800.932.6993 to get a new installation license.

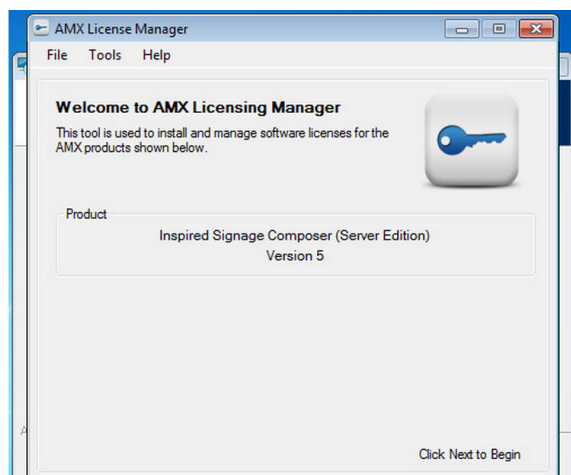


FIG. 31 AMX License Manager

2. After the Licensing Manager launches, this is how the Window Navigation Bar potentially will look.

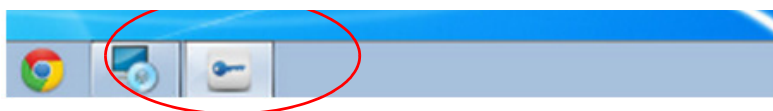


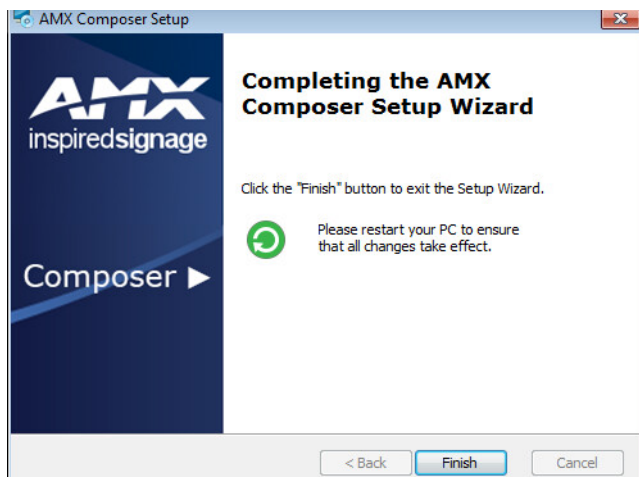
FIG. 32 Navigation Bar With Licensing Manager Running

3. The Publisher Guardian service needs to be started after RabbitMQ is installed. This command prompt window pops up showing the service is starting up.



FIG. 33 Publisher Guardian Launch

4. If all steps were completed appropriately, the following window appears advising that the user should reboot their system. Click *Finish* to complete and reboot the system afterwards.



**FIG. 34** Composer Setup Finished

**NOTE:** If the installation process fails please make note of where it failed and any error message that displayed on the screen and call technical support at 800-932-6993. The Composer installer outputs a log file directory on the root drive with the file name *ComposerServerInstallation.log*. For example if your root drive is C:\ then the log can be found at C:\ComposerServerInstallation.log.

## Notify Composer Users

Following the Composer upgrade, the link to Composer will now have a new path. If using the same machine that Composer is installed on, Composer can be accessed via this URL: *localhost\Composer*. Send out a memo notifying all Composer users to update their browser bookmarks to access Composer using the new URL: *MachineName\Composer*.

## Restore Back Up Files

**NOTE:** DO NOT Copy the old *Web.config* in place of the new one.

1. If custom settings exist (such as Active Directory configurations) that need to persist to the new Composer installation, contact the person who initially configured Composer on your machine, or AMX support, and provide them with your old *Web.config*.
2. Replace the new directories with your backups.
  - DataFiles
  - LocalPreviewFolder
  - TpkFiles
3. Reboot your machine.

This task is now complete. Your new Composer should be ready for use. Now would be an opportune time to upgrade the Xport installation to Xport 1.3 if you have not already done so. Refer to the "Xport Administrators Guide" located on AMX' website at <http://www.amx.com> for details.

## Modify Web.config File

When upgrading from a 5.x and Active Directory has been configured, the new Composer *web.config* needs to be modified using the backed up *web.config*. This file can be found at:

**InstallDirectory\AMX\Inspired Signage\Composer Server\Default\Web\web.config**

There is a section in the old *web.config* that needs to be copied into the new *web.config* in order for the configures to persist.

1. Locate the `<userDirectory>` block of configuration information in the old *Web.config*.
  - a. Find the section in the file with the following format (the ellipse is a place holder for additional lines) `<userDirectory>`

```

...
</userDirectory>

```
  - b. Have this section ready to copy into the new *Web.config*.
2. Open the new *Web.config* to edit.
  - a. Navigate to:
 

**C:\Program Files (x86)\AMX\Inspired Signage\Composer Server\Default\Web**
  - b. Open the *Web.config* in a preferred text editor.

3. Place the Active Directory information into your new Web.config.
  - a. Enter a new line after the **<configuration>** tag.
  - b. On the new line copy the full section between the tags found in Step 1 including the **<userDirectory>** and **</userDirectory>** tags.
4. Save the file.

If unable to save it to the same location due to permissions issues, save it to your desktop first, then copy it from the desktop into the Composer Web folder.

## RabbitMQ Manual Edits

The following is a the quick edit that would need to take place after an install is complete when the RabbitMQ default directory is changed.

1. Locate the directory where RabbitMQ was installed on your machine. This path was set during the Composer installation process.
2. Navigate to where Composer was installed (remove bolded text if on a 32 bit machine):  
**C:\Program Files (x86)\AMX\Inspired Signage\Composer Server\Supporting Files\RabbitMQ**
3. Right Click and Edit the file that matches your system type.
  - EnableManagement32bit.bat for 32 bit operating systems.
  - EnableManagement64bit.bat for 64 bit operating systems.
  - Using the modified RabbitMQ directory, update the second line of the file to match the new location.
  - The only thing that should be replaced here is "C:\Program File (x86)."
  - "\RabbitMQ Server\rabbitmq\_server-3.3.0\sbin\rabbitmq-plugins.bat" will remain the same regardless of where RabbitMQ is installed.
4. Save and close the file once the edit is complete.
5. Right Click and Run the edited batch file.



© 2015 Harman. All rights reserved. AMX, AV FOR AN IT WORLD, and HARMAN, and their respective logos are registered trademarks of HARMAN. Oracle, Java and any other company or brand name referenced may be trademarks/registered trademarks of their respective companies.

AMX does not assume responsibility for errors or omissions. AMX also reserves the right to alter specifications without prior notice at any time.

The AMX Warranty and Return Policy and related documents can be viewed/downloaded at [www.amx.com](http://www.amx.com).

**3000 RESEARCH DRIVE, RICHARDSON, TX 75082**

**AMX.com | 800.222.0193 | 469.624.8000 | +1.469.624.7400 | fax 469.624.7153**

Last Revised:  
7/22/2015