



INSTALLATION GUIDE

INSPIRED EXPERT IS-XPT-2200

MEDIA APPLIANCE



IMPORTANT SAFETY INSTRUCTIONS!

- 1) READ these instructions.
- 2) KEEP these instructions.
- 3) HEED all warnings.
- 4) FOLLOW all instructions.
- 5) DO NOT use this apparatus near water.
- 6) CLEAN ONLY with dry cloth.
- 7) DO NOT block any ventilation openings. Install in accordance with the manufacturer's instructions.
- 8) DO NOT install near any heat sources such as radiators, heat registers, stoves, or other apparatus (including amplifiers) that produce heat.
- 9) DO NOT defeat the safety purpose of the polarized or grounding type plug. A polarized plug has two blades with one wider than the other. A grounding type plug has two blades and a third grounding prong. The wider blade or the third prong are provided for your safety. If the provided plug does not fit into your outlet, consult an electrician for replacement of the obsolete outlet.
- 10) PROTECT the power cord from being walked on or pinched, particularly at plugs, convenience receptacles, and the point where they escape from the apparatus.
- 11) ONLY USE attachments/accessories specified by the manufacturer.



12) USE ONLY with a cart, stand, tripod, bracket, or table specified by the manufacturer, or sold with the apparatus. When a cart is used, use caution when moving the cart/apparatus combination to avoid injury from tip-over.

13) UNPLUG this apparatus during lightning storms or when unused for long periods of time.

14) REFER all servicing to qualified service personnel. Servicing is required when the apparatus has been damaged in any way, such as power-supply cord or plug is damaged, liquid has been spilled or objects have fallen into the apparatus, the apparatus has been exposed to rain or moisture, does not operate normally, or has been dropped.

15) DO NOT expose this apparatus to dripping or splashing and ensure that no objects filled with liquids, such as vases, are placed on the apparatus.

16) To completely disconnect this apparatus from the AC Mains, disconnect the power supply cord plug from the AC receptacle.

17) Where the mains plug or an appliance coupler is used as the disconnect device, the disconnect device shall remain readily operable.

18) DO NOT overload wall outlets or extension cords beyond their rated capacity as this can cause electric shock or fire.



The exclamation point, within an equilateral triangle, is intended to alert the user to the presence of important operating and maintenance (servicing) instructions in the literature accompanying the product.



The lightning flash with arrowhead symbol within an equilateral triangle is intended to alert the user to the presence of uninsulated "dangerous voltage" within the product's enclosure that may be of sufficient magnitude to constitute a risk of electrical shock to persons.



ESD Warning: The icon to the left indicates text regarding potential danger associated with the discharge of static electricity from an outside source (such as human hands) into an integrated circuit, often resulting in damage to the circuit.

WARNING: To reduce the risk of fire or electrical shock, do not expose this apparatus to rain or moisture.

WARNING: No naked flame sources - such as candles - should be placed on the product.

WARNING: Equipment shall be connected to a MAINS socket outlet with a protective earthing connection.

WARNING: Avoid exposure to extreme heat or cold.

WARNING: This product is intended to be operated ONLY from the voltages listed on the back panel or the recommended, or included, power supply of the product. Operation from other voltages other than those indicated may cause irreversible damage to the product and void the products warranty. The use of AC Plug Adapters is cautioned because it can allow the product to be plugged into voltages in which the product was not designed to operate. If the product is equipped with a detachable power cord, use only the type provided with your product or by your local distributor and/or retailer. If you are unsure of the correct operational voltage, please contact your local distributor and/or retailer.

ESD WARNING



To avoid ESD (Electrostatic Discharge) damage to sensitive components, make sure you are properly grounded before touching any internal materials.

When working with any equipment manufactured with electronic devices, proper ESD grounding procedures must be followed to make sure people, products, and tools are as free of static charges as possible. Grounding straps, conductive smocks, and conductive work mats are specifically designed for this purpose.

Anyone performing field maintenance on AMX equipment should use an appropriate ESD field service kit complete with at least a dissipative work mat with a ground cord and a UL listed adjustable wrist strap with another ground cord



WARNING: Do Not Open! Risk of Electrical Shock. Voltages in this equipment are hazardous to life. No user-serviceable parts inside. Refer all servicing to qualified service personnel. Place the equipment near a main power supply outlet and make sure that you can easily access the power breaker switch.

FCC AND CANADA EMC COMPLIANCE INFORMATION:

FCC AND CANADA EMC COMPLIANCE INFORMATION:

This device complies with part 15 of the FCC Rules. Operation is subject to the following two conditions:

(1) This device may not cause harmful interference, and (2) this device must accept any interference received, including interference that may cause undesired operation.

NOTE: This equipment has been tested and found to comply with the limits for a Class A digital device, pursuant to part 15 of the FCC Rules. These limits are designed to provide reasonable protection against harmful interference when the equipment is operated in a commercial environment. This equipment generates, uses, and can radiate radio frequency energy, and if it is not installed and used in accordance with the instruction manual, it may cause harmful interference to radio communications. Operation of this equipment in a residential area is likely to cause harmful interference, in which case the user will be required to correct the interference at his own expense.

Caution: Changes or modifications not expressly approved by the manufacturer could void the user's authority to operate this device.

CAN ICES-3 (A)/NMB-3(A)

EU COMPLIANCE INFORMATION:

Eligible to bear the CE mark; Conforms to European Union Low Voltage Directive 2014/35/EU; European Union EMC Directive 2014/30/EU; European Union Restriction of Hazardous Substances Recast (RoHS2) Directive 2011/65/EU; European Union WEEE (recast) Directive 2012/19/EU; European Union Eco-Design Directive 2009/125/EC; European Union Registration, Evaluation, Authorization and Restriction of Chemicals (REACH) Directive 1907/2006

You may obtain a free copy of the Declaration of Conformity by visiting <http://www.amx.com/techcenter/certifications.asp>

WEEE NOTICE



This appliance is labeled in accordance with European Directive 2012/19/EU concerning waste of electrical and electronic equipment (WEEE). This label indicates that this product should not be disposed of with household waste. It should be deposited at an appropriate facility to enable recovery and recycling.

Table of Contents

IS XPert	1
Overview	1
IS XPert - Components.....	1
Inspired Composer Software Application	1
Installing Inspired Composer	1
Setting up Inspired Composer	2
IS-XPT-2200 Inspired XPert Player	3
Overview	3
Features.....	3
Compatibility	3
Important Safety Markings	3
Product Specifications	4
IS-XPT-2200 Installation	5
Overview	5
Wall Mounting the IS-XPT-2200	5
Connect a USB Mouse and Keyboard to the IS-XPT-2200.....	6
Connect the HDMI Display(s) to the IS-XPT-2200.....	6
Connecting to a Single Display	6
Connecting to Two Displays	6
Connect the IS-XPT-2200 to the Controller PC (via LAN).....	6
Connect Power to the IS-XPT-2200	6
IS-XPT-2200 Player Configuration	7
Overview	7
Diagnostic Screen	7
Accessing the Player Web Configuration Tool	7
Quick Wizard - Screen Configuration	8
Quick Wizard - Network Configuration	9
IS-XPT-2200 Networking Overview.....	9
Regional Configuration.....	10
Restarting the IS-XPT-2200	10
Turning off the Diagnostic Screen and Changing the Password	10
Using Two Monitors with the IS-XPT-2200.....	11
Appendix: Connecting the IS-XPT-2200 to a LAN via Link-Local Addressing	13
Overview	13

IS XPert

Overview

IS XPert is a simple, ready to deploy, Signage solution that provides the benefits of a full digital Signage system without the need for consultants or design services.

IS XPert - Components

The following software applications and hardware components comprise the *IS XPert* solution (FIG. 1):

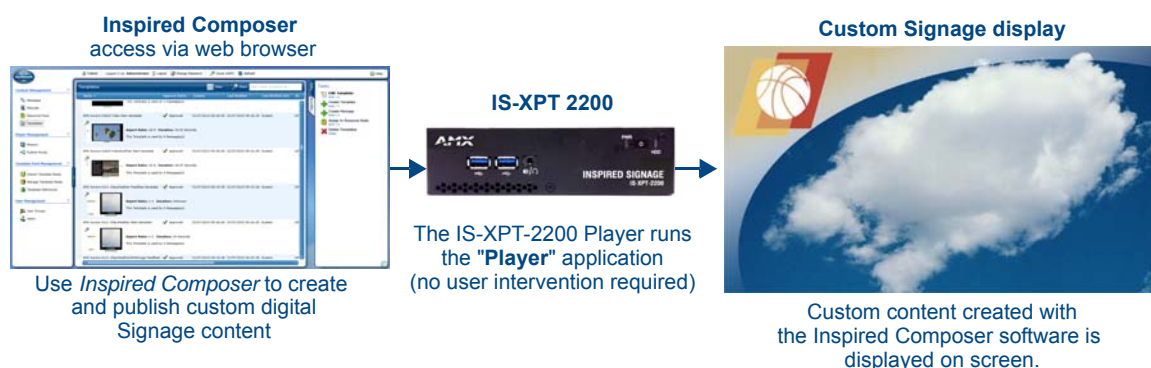


FIG. 1 IS XPert - Components

Inspired Composer Software Application

Inspired Composer is a content management application. It is installed on a Windows-based desktop or server and accessed through a web browser, either directly in the case of the desktop version, or via a network. (FIG. 2).

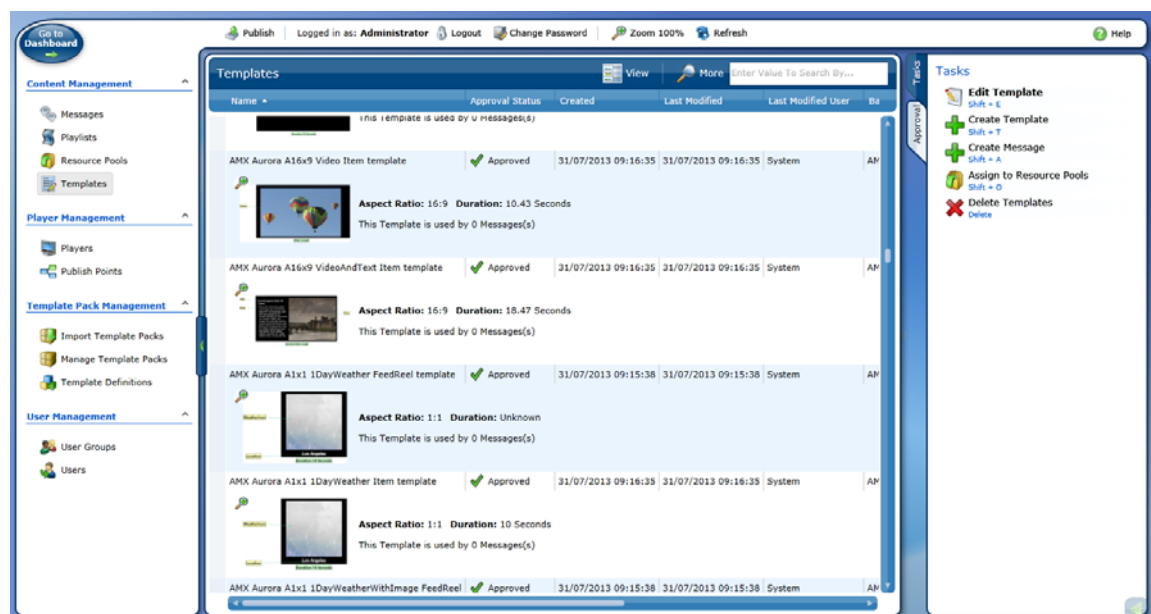


FIG. 2 Inspired Composer Web Application

Inspired Composer provides several key functions:

- It allows end users to create, customize and publish content.
- It allows Administrators to manage Users and User Groups as well as pools of content called Resource Pools.
- It allows Administrators to manage a collection of Players.
- It allows Managers/Administrators to approve content and playlist changes made by end users.

Composer enables taking Templates created by AMX's Graphic Design team, and creating Messages from these Templates, with customized media and data. These Messages are then added to Playlists and published to the relevant Players, so that the new content can be displayed on screen. Typically one Message corresponds to one digital sign. Composer can control a large number of Playlists, each with its own set of Messages.

Installing Inspired Composer

Refer to the *Composer Desktop Installation Guide* or *Composer Server Installation Guide* as appropriate for installation instructions.

Setting up Inspired Composer

Composer needs to be setup in order to display content on the Player. Note that the operations described below must be carried out in the correct order to avoid problems. Refer to the *IS XPert 2200 Instruction Manual* for instructions.

The process is as follows:

1. Import/Manually Configure your Player(s)
2. Add Player(s) to the Publish Point System (A hierarchical grouping of Players)
3. Import Template Packs and publish these Template Packs to Player(s)
4. Add a Layout Message to the Layout Playlist
5. Add content Messages to the Area Playlists
6. Publish changes to the Player(s)

IS-XPT-2200 Inspired XPert Player

Overview

The IS-XPT-2200 Inspired XPert Player (FG1232-100) is a self-contained solution for Inspired Signage software that delivers content to a display. FIG. 3 indicates the front and rear panel components of the IS-XPT-2200:

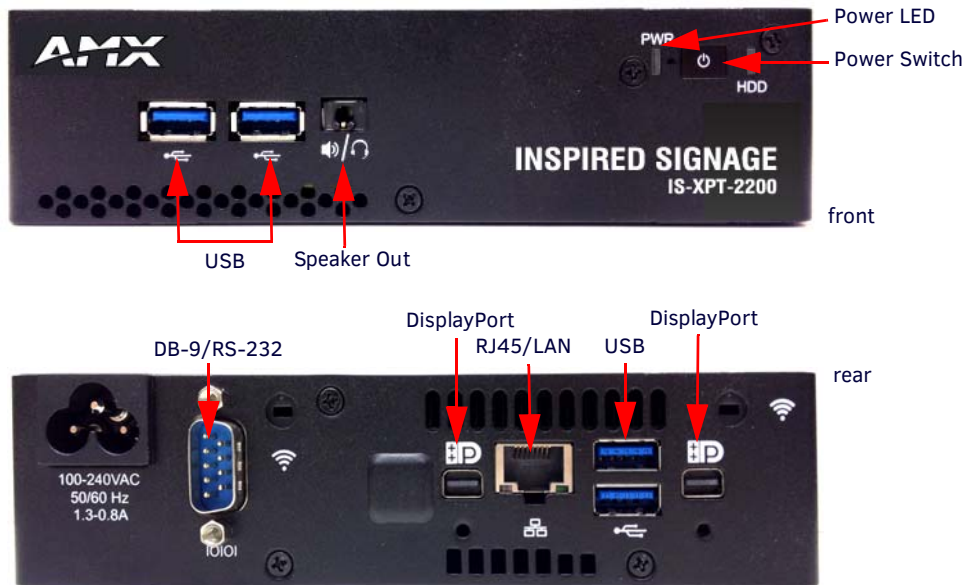


FIG. 3 IS-XPT-2200 Inspired XPert Player

Features

- High-definition video output at up to 1080p
- Small size
- Serial port control for attached display
- Networked

Compatibility

Warning, the IS-XPT-2200 Inspired XPert Player is only compatible with Composer 4.8 or higher.

The running version of Composer is displayed in one of these locations:

- Composer 4.8 - At the top of the main Composer screen in the blue status bar next to "Composer"
- Composer 5 or higher - On the Dashboard at the bottom of the Welcome screen in the right pane in the "About Composer" list.

Important Safety Markings

NOTE: Power supply cords shall have conductors with cross-sectional areas sufficient for the rated current of the equipment. Conductors shall be sized based on the requirements in the National Electrical Code, ANSI/NFPA 70, and the Canadian Electrical Code, Part I, CSA C22.1. The length of a power supply cord shall not exceed 4.5 m.

Product Specifications

IS-XPT-2200 Product Specifications	
Dimensions (HWD)	1.875" x 6.5" x 4.430" (47.62mm x 165mm x 112.52mm)
Weight:	2.35 lbs (1.065 Kg)
Power	100–240VAC, 50/60 Hz, 96W (120V AC, 1.3A)
Current	0.8 –1.3A
Environment	<ul style="list-style-type: none"> Operating Temperature : 0 ~ +55°C (32 ~ 131°F) Storage Temperature : -20 ~ +70°C (-4 ~ 158°F)
Operating System	Windows Embedded POSReady7 Operating System
Front Panel Component	
USB Ports	2 USB 2.0 Ports can be used for connecting a mouse/keyboard or for controlling other devices (i.e., display ON/OFF) using the provided USB to serial converter. Note: <i>The Player is designed to be used without a keyboard and mouse; they are not required for normal operation.</i>
Speaker/Headphone	5mm jack can be used for external speakers or headphones
Power Switch	User accessible switch to power up/down unit
Power LED	Power LED indicates green when power is applied.
Rear Panel Components	
Power	3-pin AC power plug provides power to the unit.
DB-9/RS-232	9-pin DB9 RS-232 connector provides a serial interface for controlling other devices (i.e., display ON/OFF).
USB Ports	2 USB 2.0 Ports, can be used for connecting a mouse/keyboard or for controlling other devices (i.e., display ON/OFF) using the provided USB to serial converter. Note: <i>The Player is designed to be used without a keyboard and mouse; they are not required for normal operation.</i>
Ethernet Port	RJ-45 Ethernet port provides Gigabit Ethernet communication between the Player and the Controller PC (which runs the <i>Inspired Composer</i> application). Connect the Ethernet port to the LAN
mini-DisplayPort (mDP)	Two mDP output ports provide HD video output to the display.
Certifications	<ul style="list-style-type: none"> UL 60950-1 2nd Edition EN 60950-1 A2:2013 IEC 60950-1 2nd Edition Amendment 2 NOM-019-SCFI-1998 CAN/CSA C22.2 No. 60950-1-07, 2nd Edition CISPR 22 CISPR-24 FCC 47 CFR Part 15, Subpart B / ICES-003 EN 55022:2010 EN 55024:2010 RoHS
Included Accessories	<ul style="list-style-type: none"> One power adapter mini-DisplayPort to HDMI cable One VESA/wall mounting bracket

IS-XPT-2200 Installation

Overview

This section describes installing the IS-XPT-2200. Refer to the following sections for related instructions. For instructions on using the *Player Web Configuration* tool to configure the IS-XPT-2200, refer to the *IS-XPT-2200 Player Configuration* section on page 7.

Wall Mounting the IS-XPT-2200

The IS-XPT-2200 includes a mounting plate and hardware to mount the player to a wall, as described below:

1. Orient the mounting plate so that the label *This Way Up* is visible and facing vertically upwards, see FIG. 4:

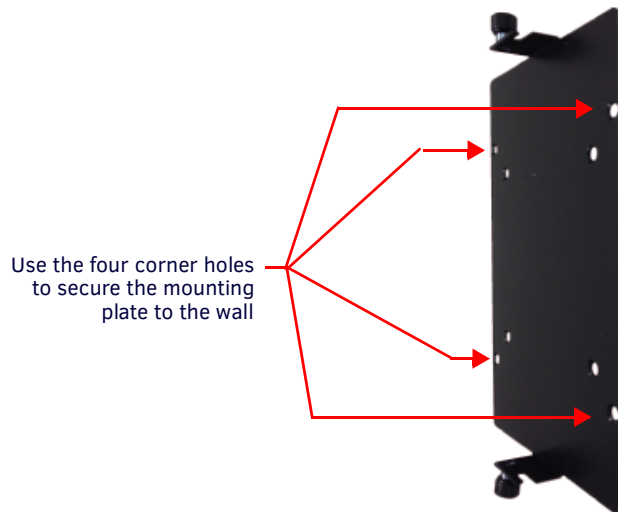


FIG. 4 Orient the mount plate correctly on the wall

2. Use the mounting plate as a template to mark the location of the four corner holes on the mounting surface, and drill four holes in the wall.
3. Use the supplied mounting screws to secure the mounting plate to the wall.
4. Slide the unit into the mounting plate so the open hole lines up under the thumb screws, and the stand-off screws slide into the bracket slots on top and bottom (FIG. 5):

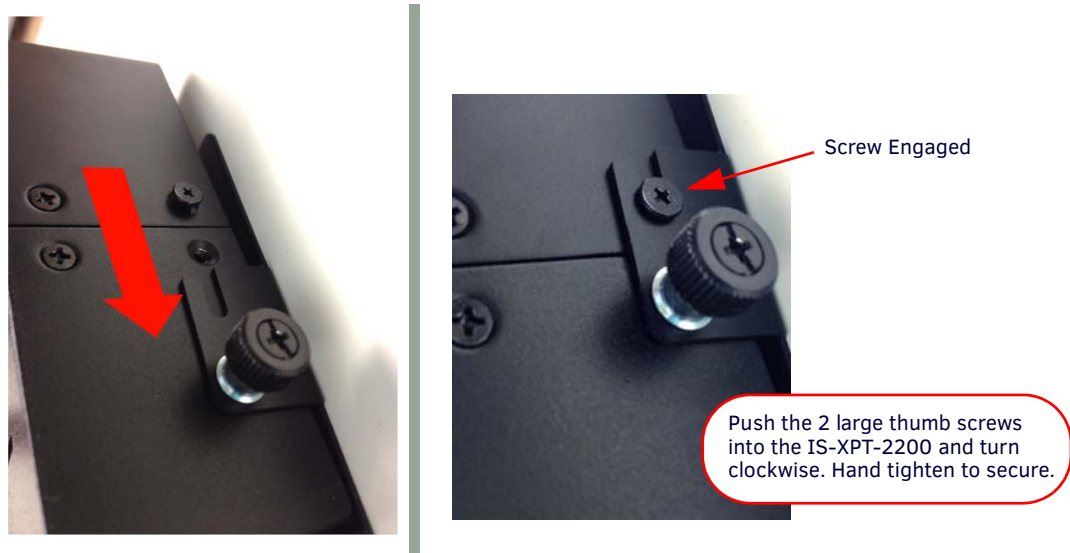


FIG. 5 Slide IS-XPT-2200 into the Bracket Mounts

5. Press the thumb screws in and turn in a clock-wise rotation to secure.
6. The IS-XPT-2200 should now be firmly attached to the wall (FIG. 6):



FIG. 6 IS-XPT-2200 Mounted via the Mounting Plate

Once the IS-XPT-2200 is mounted, connect cables to the player.

Connect a USB Mouse and Keyboard to the IS-XPT-2200

Two USB 2.0 ports on the rear panel of the IS-XPT-2200 can be used to connect a mouse/keyboard, which may be necessary to navigate and configure the player if a network connection is not available.

Connect the HDMI Display(s) to the IS-XPT-2200

Two mini-DisplayPort (mDP) output ports on the rear panel of the IS-XPT-2200 provide HD video output to one or two displays:

Connecting to a Single Display

If connecting a single display, use an mDP to HDMI cable to connect the left-side mDP connector to the HDMI display device.

Connecting to Two Displays

If connecting two displays, use two mDP to HDMI cables to connect each mDP connection to a display device.

Some basic configuration is required when using both mDP outputs - refer to the *Using Two Monitors with the IS-XPT-2200* section on page 11 for details.

Connect the IS-XPT-2200 to the Controller PC (via LAN)

NOTE: The term "Controller PC" refers to the PC that is running the Inspired Composer application.

An RJ-45 Ethernet port on the rear panel of the IS-XPT-2200 provides Gigabit Ethernet communication between the Player and the Controller PC.

Use an Ethernet cable to connect the IS-XPT-2200 to the LAN on which the Controller PC is present.

Connect Power to the IS-XPT-2200

Use the provided power cord to connect the Player to a power outlet. Turn on the player using the front power switch.

When the IS-XPT-2200 is turned on for the first time, the *Diagnostic* screen is displayed (see FIG. 7 on page 7). This screen displays important information about the Player: *Network* settings, *Display* settings (with Test Patterns), and *NetLinx* settings (which allow you to control the content displayed on the Player using a NetLinx controller).

Once the IS-XPT-2200 is connected to the Controller PC, to a display device, and is receiving power, you can configure the player via the Player Web Configuration tool. Refer to the *IS-XPT-2200 Player Configuration* section on page 7 for device configuration instructions.

IS-XPT-2200 Player Configuration

Overview

The IS-XPT-2200 provides a built-in web console called the *Player Web Configuration* tool to configure the player. This section describes how to use the *Player Web Configuration* tool to configure the IS-XPT-2200.

NOTE: The instructions in this section assume that the IS-XPT-2200 will be installed on a DHCP network. For instructions on installing on a non-DHCP network, refer the Appendix: Connecting the IS-XPT-2200 to a LAN via Link-Local Addressing on page 13.

NOTE: Due to security concerns, QuickTime has been removed from the XPT-2200s from the factory.

Diagnostic Screen

When the IS-XPT-2200 is powered on for the first time, the *Diagnostic* screen is displayed (see FIG. 7). This screen displays important information about the Player: *Network* settings, *Display* settings (with Test Patterns), and *NetLinx* settings (which controls the content displayed on the Player using a NetLinx controller).

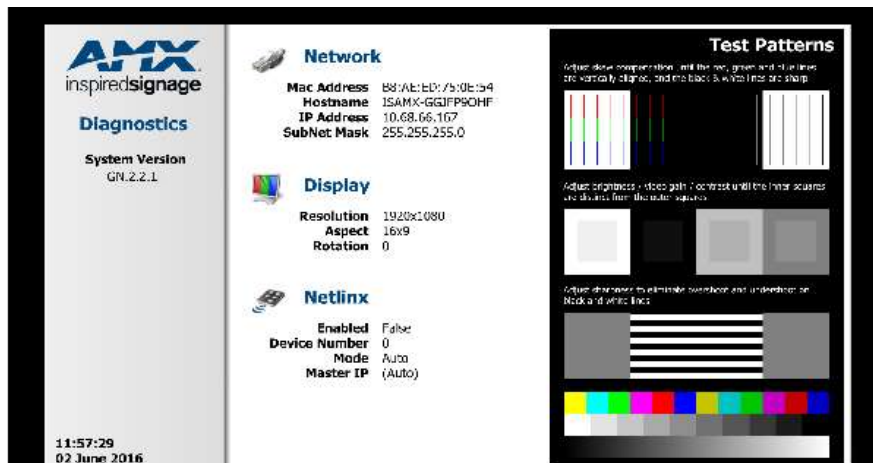


FIG. 7 Default Player Screen - Diagnostic Screen

NOTE: When displaying screen shots of the system as shown in FIG. 7, the clock time displayed in the bottom left corner using black text shows when the screen shot was actually taken. The black clock text is not a live system clock. The actual live system clock is displayed in green text in the Web Configuration tool menus.

Accessing the Player Web Configuration Tool

NOTE: The Player Web Configuration tool requires the Microsoft Silverlight plugin (<http://www.microsoft.com/getsilverlight/Get-Started/Install/Default.aspx>). If it is not already installed, the Silverlight plugin will be downloaded automatically when you first access the Player Web Configuration tool.

To access the Player Web Configuration tool, in order to configure the IS-XPT-2200, enter the following URL into Internet Explorer:

`http://<Player IP>`

for example, `http://192.168.81.98`

Note that the IS-XPT-2200's IP address is indicated on the Diagnostics screen, under *Network* (FIG. 8):

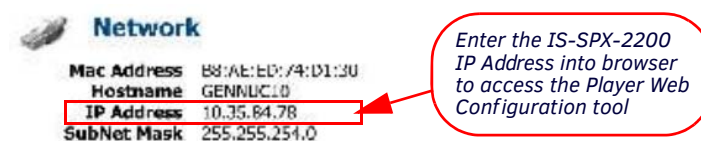


FIG. 8 Diagnostic Screen (Player IP Address)

IMPORTANT: Make a note of the Player IP address for future reference as this IP address is used when configuring the Player in Composer.

Once connected to the Player Web Configuration tool, the *Quick Wizard* will guide you through configuring the new Player. The Player Configuration Wizard consists of three pages:

- Screen - Player display settings e.g. display resolution
- Network - Player Network settings
- Language - Player Date/Time and Locale settings

Complete each page and click **next** to continue to the next page in the wizard. These pages are described in the following sections.

Quick Wizard - Screen Configuration

The first page of the Quick Wizard is the *Screen Configuration* page. The options on this page allow you to configure the display of content output by the IS-XPT-2200 on the display devices. These settings include Screen (Output) Resolution, Aspect Ratio, and Rotation Setting (FIG. 9).

AMX inspiredsignage
IS-XPT-2200

Quick Wizard

- 1 - Screen
- 2 - Network
- 3 - Regional

Previous Next
Save Cancel

Screen Configuration

Hint: Enable On Screen Diagnostics in Live View Tab to find Auto Resolution and Auto Aspect after a Hard Restart

Output Resolution

- ☒ Auto
- ☐ 800 x 600
- ☐ 1024 x 768
- ☐ 1280 x 720
- ☐ 1280 x 1024
- ☐ 1360 x 768
- ☐ 1920 x 1080
- ☐ Width Height

Output Aspect

- ☒ Auto
- ☐ 4 x 3
- ☐ 16 x 9
- ☐ 16 x 10
- ☐ Width Height

Rotation

- ☒ 0°
- ☐ 90°
- ☐ 180°
- ☐ 270°
- ☐ Custom angle: 0°

As-Run Logging

☐ Enable As-Run Logging ☐ Exclude Templated Data

FIG. 9 Quick Wizard - Screen Configuration Page

Output Resolution

- With *Auto* selected, the player will attempt to select the best resolution for the attached display using the EDID (Extended Display Identification) system. However, if the preferred display resolution is not supported, the player will default to 1024x768.
 - To specify a resolution, select from the options provided under **Output Resolution**.
 - To specify a custom output resolution, select **Custom** from the menu. With *Custom* selected, the **Custom Width** and **Custom Height** fields are enabled. Enter the desired resolution (width and height in pixels).

Output Aspect

- With *Auto* selected, the player will attempt to select a suitable aspect ratio for the attached display using the EDID system.
 - To select a specific *output aspect ratio*, choose from the options provided under **Output Aspect**.
 - To specify a custom aspect ratio, select **Custom** from the menu. With *Custom* selected, the **Custom X** and **Custom Y** fields are enabled. Enter the desired aspect ratio in inches.

Rotation

- If the display screen is mounted upside down or sideways, you may need to change the output orientation from the Player. To rotate the output display, select the desired degree of counter-clockwise rotation under **Rotation**.
 - The default setting is **0** (zero = no rotation). Other settings are 90, 180, and 270.
 - Use the first and last of these settings if the Player is displaying portrait content or if the Player is mounted on its side.
 - Select 180 degrees if the display is mounted upside down.

As-Run Logging

- This screen also contains a small number of settings for Player display logging (known as *As-Run Logging*). As run logging enables users to log which messages play, for how long, and the contents of those messages. This data can be used to bill another customer for advertising, or for data mining purposes.
To configure the IS-XPT-2200 to log what it displays, set the check box **Enable As-Run Logging**.
Once this setting is enabled the Player will log the names of the digital signs (called *Messages* in Composer) it displays and the data that makes up the signs.
Note that this may result in excessively large log files. If you do not need the content data, and the name is sufficient, then set the check box **Exclude Template Data**. Both of these settings can be changed later if you are not certain what is required. However, be aware that data on what has been displayed is only available for signs (*Messages*) published to the Player after this setting is enabled.
- Click **Next** to proceed to the *Network Configuration* page.

Quick Wizard - Network Configuration

The next page of the Quick Wizard is the *Network Configuration* page (FIG. 10). The options on this page allow you to configure the IS-XPT-2200's network settings.

AMX inspiredsignage
IS-XPT-2200

Quick Wizard

- 1 - Screen
- 2 - Network**
- 3 - Regional

Previous Next

Save Cancel

Network Configuration

Host Name **Change Requires Hard Restart**

MAC Address B8:AE:ED:74:D1:30

☒ Use DHCP

IP Address	10.35.84.78	✓
Subnet Mask	255.255.254.0	✓
Default Gateway	10.35.84.1	✓ ●
Primary DNS	192.168.20.5	✓ ●
Secondary DNS	192.168.20.6	✓ ●

FIG. 10 Quick Wizard - Network Configuration page

NOTE: The instructions in this section assume that the IS-XPT-2200 will be installed on a DHCP network. For instructions on installing on a non-DHCP network, refer the Appendix: *Connecting the IS-XPT-2200 to a LAN via Link-Local Addressing* on page 13.

IS-XPT-2200 Networking Overview

The IS-XPT-2200 must be connected to a network to allow it to be configured and to provide the ability to update the content displayed on the Player. The IS-XPT-2200 requires the following permanent network connections:

- A connection from the PC on which the Inspired Composer application is installed, for content updates
- A connection to a server running IS XPort to provide feeds such as RSS, Flickr, etc. (*optional*)

The location of the Player in the network topology, and the choice of a PC to install the Inspired Composer content management software should be determined accordingly.

NOTE: To ensure connectivity between the Inspired Composer application and the Player, it is important that the IP address of the Player does not change.

Set the IS-XPT-2200's Network settings as follows:

1. Enter a name for the Player in the **Host Name** field.
The Host Name is returned to Bonjour, to make it easy to identify Players in the Internet Explorer Bonjour plugin device list and in Composer.
2. By default, **DHCP** is enabled for the Player, in which case all of the TCP/IP fields are disabled. AMX recommends using DHCP and configuring a DHCP Server to prevent the Player IP address from changing.
To manually configure these settings, de-select **DHCP** and enter the desired *Machine IP*, *Subnet Mask*, *Default Gateway* and *Primary/Secondary DNS* values in the respective fields. Ask your Network administrator for these values, and make a note of the IP address for later reference.
3. Click **Next** to proceed to the *Regional Configuration* page.

Regional Configuration

Use the options in the *Regional Configuration* page to access the Time Zone, current Date & Time settings, and Locale for the IS-XPT-2200 (FIG. 11):

FIG. 11 Quick Wizard – Regional Configuration page

1. Select the appropriate time zone from the **Time zone** drop-down menu.
2. Set the date for the IS-XPT-2200 by entering a date in the date field or by using the calendar icon.
3. Set the time by entering the time in 24 hour notation.
4. Set the locale using the Language drop down menu, this affects the way dates are displayed on the Player.

Restarting the IS-XPT-2200

After setting the Time Zone, Date/Time, and Display settings, you will be prompted to restart the IS-XPT-2200 to apply the changes you have made in the three sections of the Player configuration wizard.

NOTE: *The web page will show that the Player has restarted after approximately 20 seconds.*

Turning off the Diagnostic Screen and Changing the Password

1. To access the Player Web Configuration tool, enter the following URL into Internet Explorer:
http://<Player IP>
 for example, **http://192.168.81.98**
2. Login to the Player:
 - a. Click the **Login** button in the left pane of the Player Web Configuration tool.
 - b. Enter the default Username and Password as follows:
 - User = **Administrator**
 - Password = **administrator**
3. Click **Liveview** in the left pane, and select **Hide Diagnostics** in the right pane. The Player should no longer display diagnostic information on the screen.
4. Change the password for the Player by clicking **Change Password** in the left hand pane. Enter the current password and the new password to use. You are now ready to publish content to this Player using Composer.

5. Next reboot the Player for the new setting to take effect. Select the *Power* option on the left menu tree (FIG. 12).

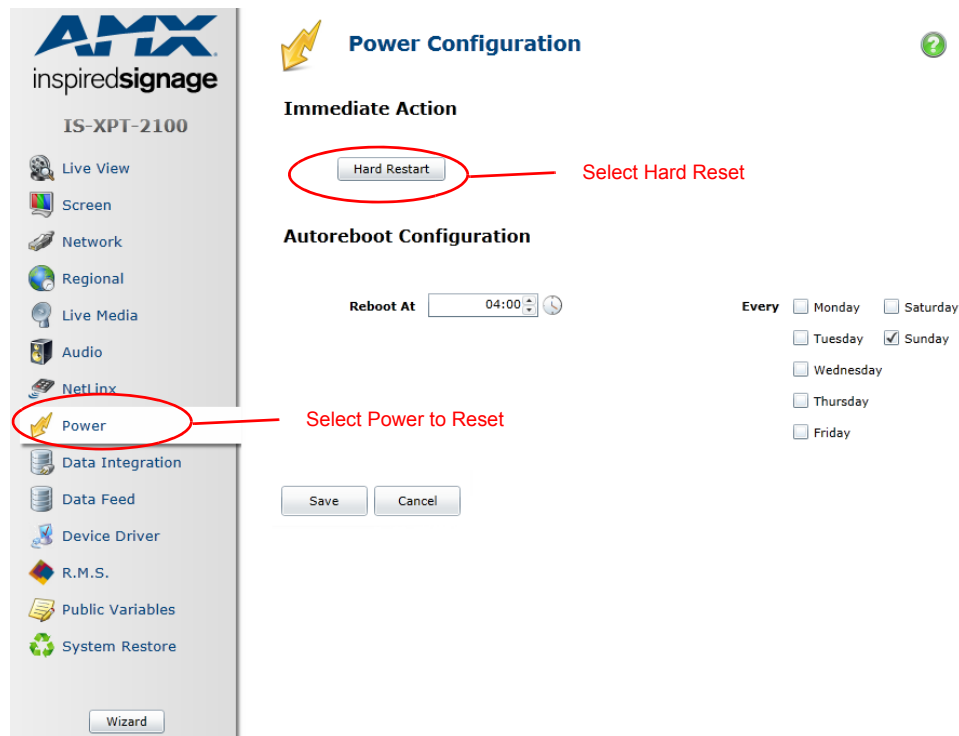


FIG. 12 Live View - Power Option

6. Select **Hard Reset** at the top off the page and wait for the Player to reboot. As-Run Logging is now enabled.

NOTE: .Mov files may no longer play following the reboot.

Using Two Monitors with the IS-XPT-2200

The two HDMI output ports on the rear panel of the IS-XPT-2200 provide the ability to send HD video output to two displays. If connecting two displays, use two HDMI cables to connect each HDMI connector to a display device. Some basic configuration is required when using both HDMI outputs:

1. Connect a USB mouse and keyboard to the Player
2. Press **Alt-F4** to stop playback on the Player (if necessary).
3. Right click on the desktop and select **Graphics Properties** (FIG. 13):

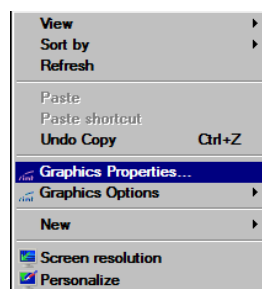


FIG. 13 Select Graphics Properties

4. In the Intel HD Graphics Control Panel, select **Displays > Multiple Displays** (FIG. 14):

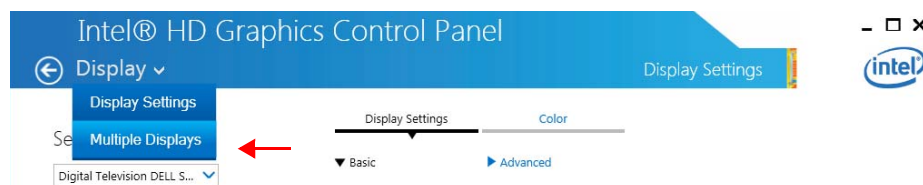


FIG. 14 Select Multiple Displays

5. Select **Display Mode > Clone** (FIG. 15) and hit "Apply" .:

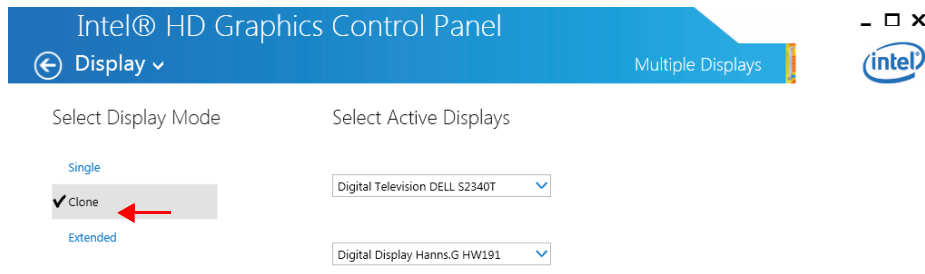


FIG. 15 Select Clone Display Mode

6. A dialogue asks if you want to keep your settings or revert the change. Elect to keep the new settings.

Appendix: Connecting the IS-XPT-2200 to a LAN via Link-Local Addressing

Overview

By using the Player's built-in *Zeroconf* feature and the *Bonjour for Windows* plug-in, users can install and configure the Player in a network that does not have a DHCP Server via link-local addressing. Install the Bonjour for Windows plugin from apple.com/support/downloads/bonjourforwindows.html.

To establish a network connection from a PC to the Player:

1. Directly connect a PC and the IS-XPT-2200, and apply power to the IS-XPT-2200.
2. Confirm that the PC has assigned itself an IP address:
 - a. If the PC's network interface is set to DHCP, wait several minutes to ensure the PC reverts to link-local addressing.
 - b. Confirm that the PC has assigned itself an IP by running **ipconfig** from a CMD shell (FIG. 16).

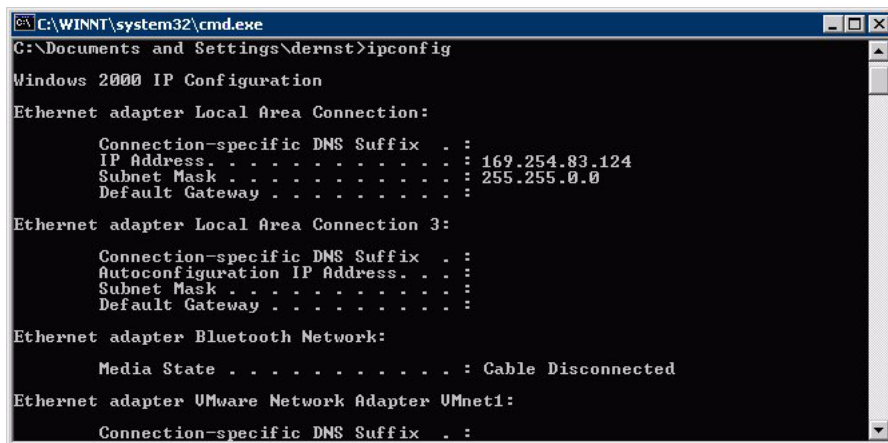


FIG. 16 CMD shell (ipconfig)

The example in FIG. 16 shows the *Ethernet adapter Local Area Connection:* could not find a DHCP server and assigned itself the IP address of **169.254.83.124** with Subnet Mask **255.255.0.0**. This is a valid link-local address.

If the PC did not assign itself a **169.254.x.x** address, or if the PC assigned itself the address **169.254.2.2** then proceed to Step 3. Otherwise, skip to Step 4.

3. **Manually assign an IP address**, via the *Internet Properties (TCP/IP) Properties dialog* (FIG. 17):
You may need to manually assign the IP on the PC if the PC does not support link-local addressing or if the PC assigned itself the IP address of **169.254.2.2**.
 - The Player assigns itself **169.254.2.2** by default when it reverts to link-local addressing.
 - Therefore, in order to avoid conflict the PC *cannot* be assigned IP address **169.254.2.2**.
 Manually set the PC's IP address to **169.254.1.1** and subnet mask to **255.255.0.0** (FIG. 17).

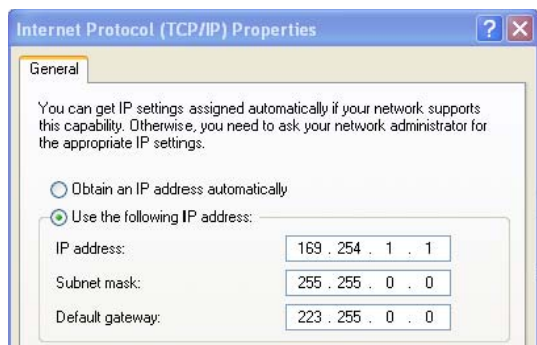


FIG. 17 Manually assigning an IP address on the PC

4. Launch Internet Explorer and select the Bonjour Plug-in.
5. Double-click the **IS-XPT-2200** in the Bonjour Plug-in pane to start the *Player Web Configuration Tool* wizard.

NOTE: The Web Configuration Tool requires the Microsoft Silverlight plugin. The first time you access the Web Configuration Tool a prompt will appear to install this plugin. You will need to be connected to the Internet to install the Plugin.



© 2016 Harman. All rights reserved. AMX, AV FOR AN IT WORLD, HARMAN, and their respective logos are registered trademarks of HARMAN. Oracle, Java and any other company or brand name referenced may be trademarks/registered trademarks of their respective companies.

AMX does not assume responsibility for errors or omissions. AMX also reserves the right to alter specifications without prior notice at any time.

The AMX Warranty and Return Policy and related documents can be viewed/downloaded at www.amx.com.

3000 RESEARCH DRIVE, RICHARDSON, TX 75082

AMX.com | 800.222.0193 | 469.624.8000 | +1.469.624.7400 | fax 469.624.7153

Last Revised:
7/21/2016