

Overview

The ACR-5100 Acendo Core Meeting Collaboration System (FG4051-00) enables one-click Skype for Business meeting launch, document sharing, web browsing, room scheduling, and more, directly from the meeting space touch display or keyboard and mouse.



FIG. 1 ACR-5100 ACENDO CORE

What's in the Box?

The Acendo Core Meeting Collaboration System includes the following accessories:

- Power supply/cord
- Two antennas
- 1 Mounting Plate and 2 Stand-off Screws
- Safety Instructions and Quick Start Guide

Safe Handling Instructions

- Input voltage: 100 – 240Vac
- Rated Output current: 5.417A
- Rated Output voltage: 12V
- Rated temperature at 40C
- Rated Altitude 5000 meters

Physical Installation

To install Acendo Core, the following items are needed:

- 1 HDMI cable (Type A male)
- Ethernet cable
- 1 HDMI touch screen or HDMI monitor with USB keyboard and/or mouse
- Mounting screws are needed for wall or under desk mounting options

Acendo Core can be mounted using the included mounting plate for wall or under desk mount or can be used as a table-top device.

Attach Mounting Plate

- Using the mounting plate as a template, place it into the desired position and mark four of the wall screw holes with a pencil.

Note: If mounting on a wall, a level can be used to set the plate level for aesthetics.
- Pre drill the holes for your wall screws.

Note: Use a drill bit smaller in diameter than your wall screws.
- Place the plate back onto the mounting surface, insert wall screws and tighten.

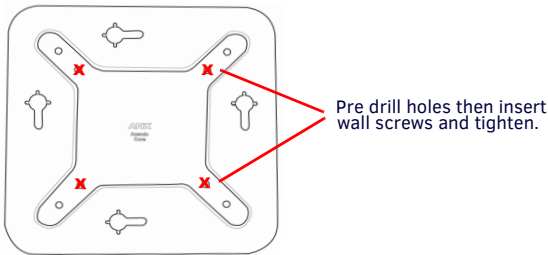


FIG. 2 BACKPLATE - INSERT SCREWS AND TIGHTEN

Attaching to Mounting Plate

- Insert the included stand-off screws into two adjacent holes on the bottom. Align the stand-off screws on the Acendo Core unit with the slotted holes in the plate and push through. Slide to lock.

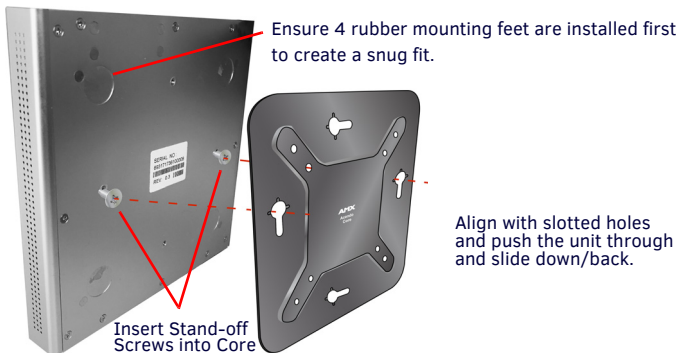


FIG. 3 ATTACH STAND-OFF SCREWS, INSERT THROUGH BACKPLATE

Connections

FIG. 4 displays the ports provided on Acendo Core.

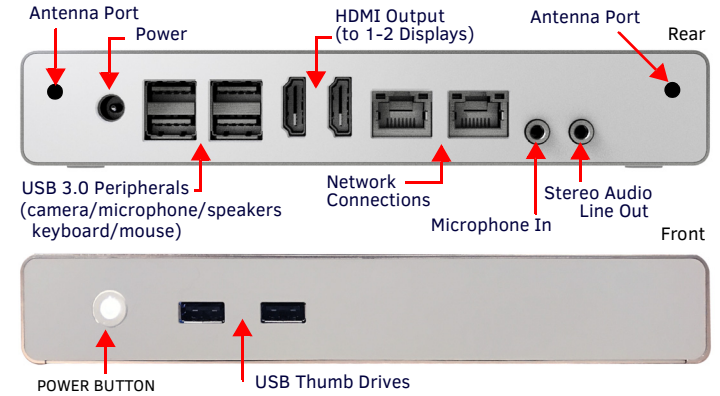


FIG. 4 ACENDO CORE CONNECTIONS

Connecting the Acendo Core to a Video Output

- Connect the rear HDMI Output port to a display using standard HDMI cabling.

Connecting a Keyboard and Mouse

The front and rear panels of Acendo Core each include Type-A USB ports (USB 2.0 on the front and USB 3.0 on the rear) to support peripherals, such as camera, microphone, speakers, and touch monitor or keyboard/mouse. Refer to FIG. 4.

Note: In addition to a directly connected USB keyboard and mouse, Acendo Core also supports using a 2.4 GHz RF wireless keyboard and mouse using a wireless dongle.

The USB ports can be used for reading from a mass storage device such as a USB hard drive or flash drive. (USB external hard drives may require their own power sources. The maximum current allowed across all USB ports is 4W.)

Note: Once a USB drive is physically connected and Acendo Core mounts the drive, the files on it can be accessed. If a message is not received stating the USB drive is mounted, Acendo Core did not recognize the drive.

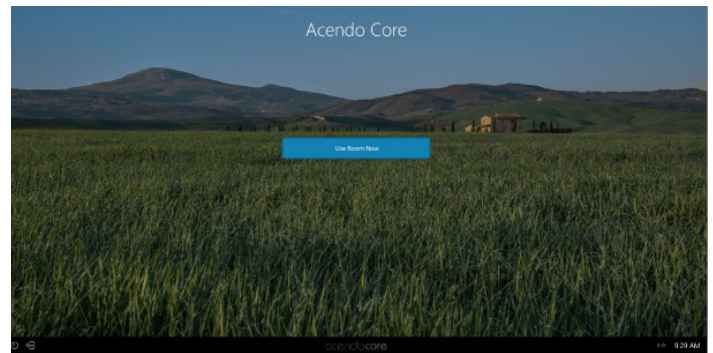
Connecting Antennas

Connect both antennas to the rear corners by screwing them in place finger tight.

Applying Power

- Connect the included power brick to the Acendo Core +12 VDC (5.5mm) power input.
- Connect the other end to the AC outlet (100-240VAC).

When power is applied, the power button on the front panel lights up white. The device usually takes about 30 seconds to boot. When booting is complete, Acendo Core opens to the Acendo Core desktop (FIG. 5).



Press on the Admin Key Icon to make changes to the system (Admin Only).

FIG. 5 CORE HOME SCREEN

Admin Login

- Press the **Admin Key Icon** in the bottom left of the screen next to the Power Icon to bring up the Admin login screen (FIG. 5).
- The Admin login screen appears (FIG. 6).

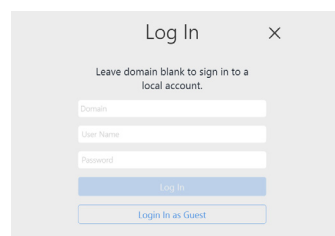


FIG. 6 ADMIN LOGIN SCREEN

- Log into an Admin session on the Acendo Core using Admin credentials:
 - Leave the Domain blank to login to the local Acendo Core account.
 - Username - coreadmin
 - Password - c0r3@dmiN (c "zero" r3@dmIN)
- After an Admin user Login, the system displays the following screen with an Admin toolbar down the left side and additional settings lower right.



FIG. 7 ADMINISTRATOR SESSION SCREEN

Locating the IP Address

Once logged in, access the IP address, Ethernet switch status, etc. on the connected video output.

- Go to the *Systems Settings* (FIG. 7) under Room Booking and momentarily make this unit a room-grouping master. This will cause the IP to be displayed for your reference (FIG. 8).

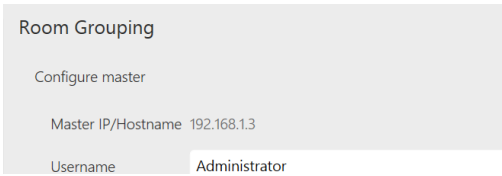


FIG. 8 Acendo Core Settings - Room Booking Group Master

- Users may also use the DOS Command Prompt and command "ipconfig/all" to display IP addresses within communication of this device.

Setting the Display Resolution

Go to System Settings - Options to set the *Display Scale* (adjusts the size of the text and icons on the screen). Let the Windows OS choose the display resolution and scaling so these options contain the text "(Recommended)" in their selection (FIG. 9). Windows Scaling is actually called: "Change the size of text, apps and other items".

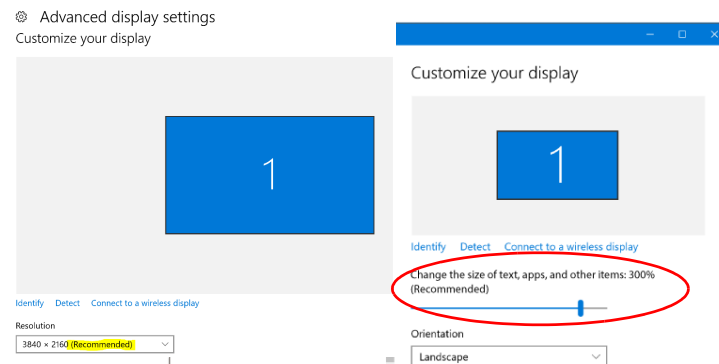


FIG. 9 Windows Recommended Settings

Make further adjustments using the following steps.

- Click on the drop down box (FIG. 10) to select larger or smaller scale on the display.

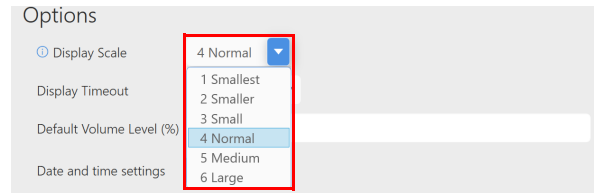


FIG. 10 Device Options - Display Scale

- To view the changes, log out of the current session and log back in.
- Adjust again as needed until all screen options are comfortably visible on the display.

Setting the Date and Time

Acendo Core Date and Time Settings functions are completely within Windows Settings. Perform these steps to set the date and time on Acendo Core:

- Sign in as Admin and click on the system time displayed in the lower right corner of the screen (FIG. 11) to bring up the Windows Time settings. Select *Change Date and Time*.

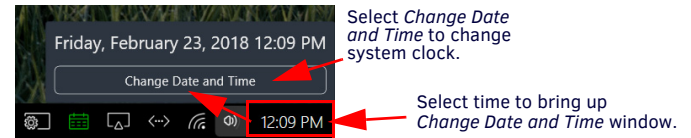


FIG. 11 Access Window Clock Settings

- The Windows system Date and Time option appears. Select the *Change Date and Time* button.
- The Date and Time Settings window appears. Select the *Change calendar settings* button.

Disconnect Power

To disconnect power from the AcendoCore unit, follow these steps:

- Click on FINISH in the lower left-hand corner to bring up the menu (FIG. 20)..

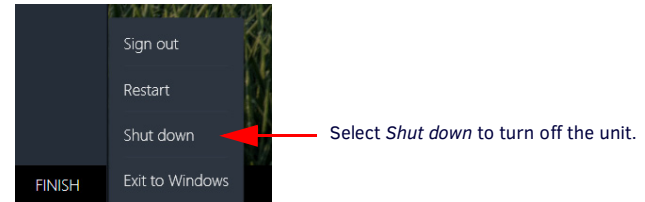


FIG. 12 Acendo Core Finish Menu

- Select Shut down to allow the unit to close its apps and turn off.
- Remove the wall plug from the AC outlet.
- Unplug the barrel plug from the rear of the units input marked +12VDC 5A

Additional Documentation

For more information about this device, consult the product page at www.amx.com for data sheets and *Acendo Core User Manual* and *Administrators Guide*.

