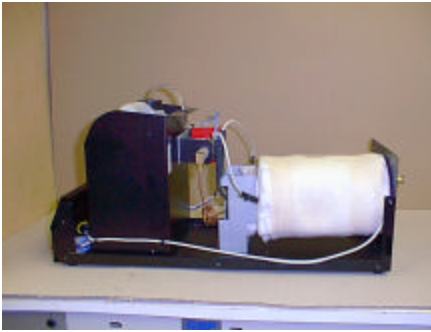


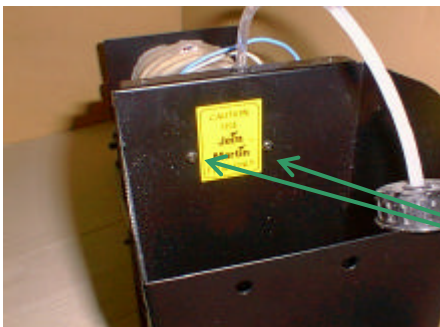
FITTING INSTRUCTIONS FOR THE MAGNUM 950 UPGRADE KIT

Please ensure that the machine is disconnected from the mains supply before commencing this upgrade

1. Remove the outer cover.

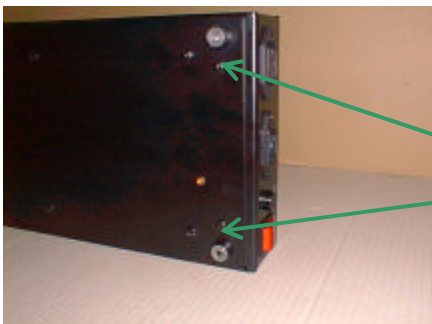


2. Remove the 2 screws that hold the pump in place.



2x M4 screws

3. Remove screws securing the back panel.



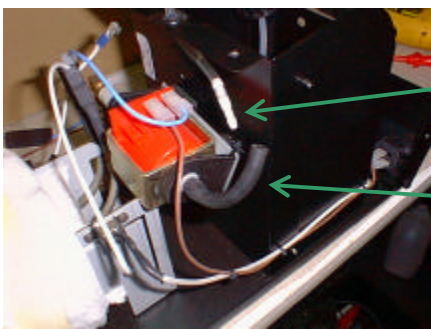
2x M4 screws

4. Remove the strap that secures the fluid line to the pump base



Black plastic strap

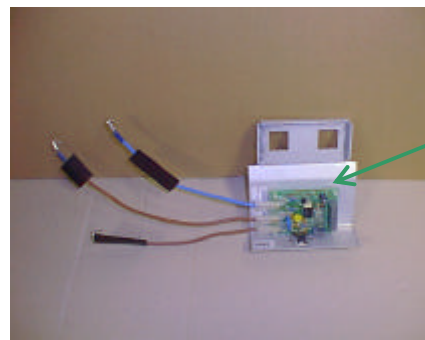
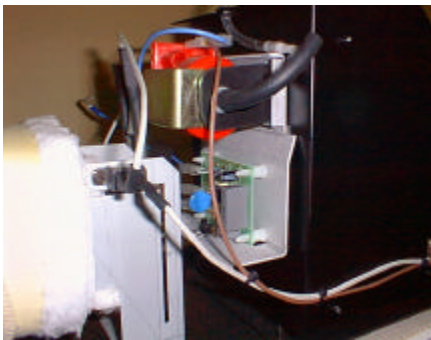
5. Separate the fluid line from the rubber connector on the pump



Fluid line

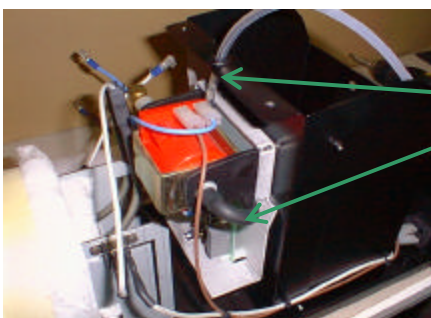
Rubber connector

6. Fit the upgrade pcb and heat sink / bracket in place, between the pump bracket and bottle compartment the two new screws [M4x 12mm] are required here to fix the pump and upgrade in place.



Upgrade pcb and Heat sink/bracket

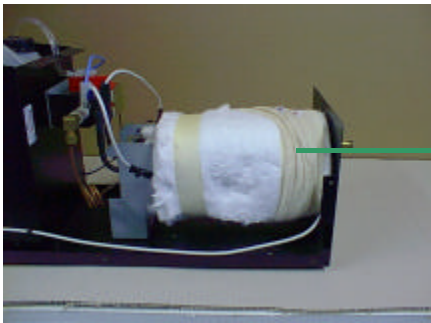
7. Reconnect the fluid line to the rubber connector this time making sure that the fluid line goes around the back of the pump.



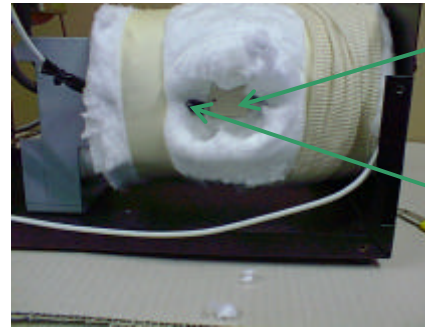
Fluid line to go under and around the back of the pump

STEPS 8 AND 9 ONLY REQUIRE DOING IF THE MACHINE HAS BEEN OUT IN SERVICE

8. Pull back the thermal sleeve and carefully cut the insulation to expose the thermostat. Disconnect the wires to the thermostat and then remove the thermostat. Fit the new thermostat ensuring that there is insulation between the wire and the aluminium block also that the black insulation sleeve is pulled back up the wire so that it touches the body of the thermostat.



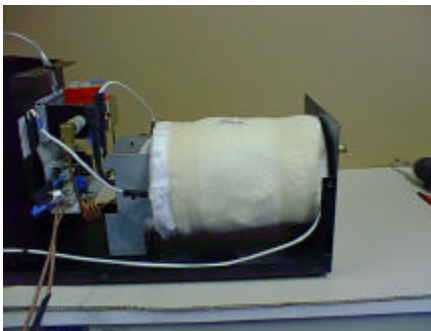
Thermal sleeve



thermostat

Black insulation sleeve

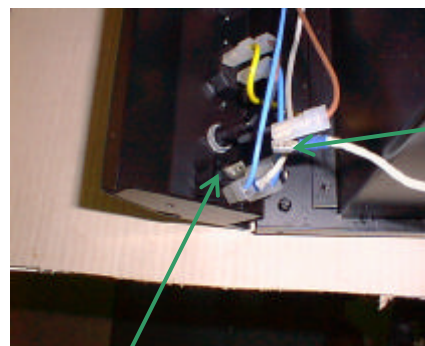
9. Replace the thermal wool back over the thermostat and pull the thermal sleeve back to its original position making sure that the edge is folded under [At least 25mm] and not in contact with the metal bracket.



10. Cut the straps that hold the mains [+] wire to the thermostat and remove the wire from the top right hand connector of the mains switch mounted on the back panel also remove the brown wire from its piggyback terminal.



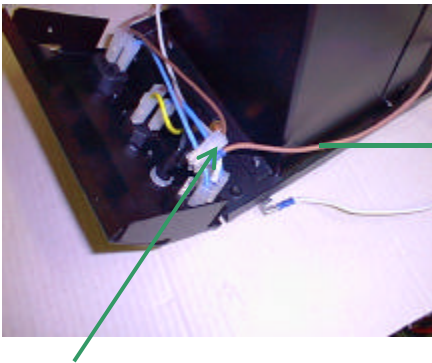
Cut straps here



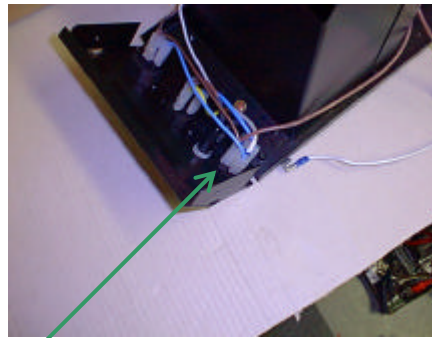
Piggyback connector

Top right hand connector

11. Substitute this wire with the longest brown one from the upgrade kit which is connected to the Terminal, marked 'L'. Fit the brown wire from the remote socket back onto the piggyback and then fit this back onto the top right hand connector of the mains switch.



Longest brown wire From pcb



Both wire fitted together and Connected back on the switch

Brown wire from the remote socket fitted to the piggyback

12. Replace back panel using 2 x M4 screws also 2x straps to secure new wire.



Back panel In place

Two straps securing new wire

13. Cut piggyback off the back of the connector attached to the thermal wire [this is the one on the wire that you have just removed From the mains switch] and fit this to connector marked PL04 on the pcb.

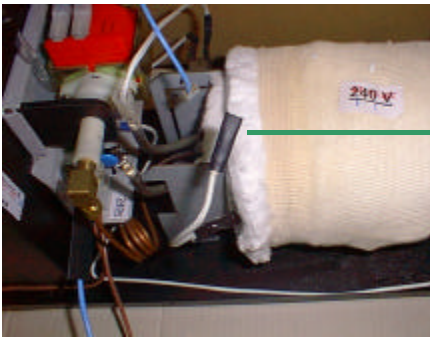


Remove the Spade off the Back of this Connector.



Connector fitted to PL04

14. The wire coming from the other side of the thermostat, disconnect this from the heater element and the blue wire from the pump. Trim the spade off the back of the piggyback connector, then slide over the smallest piece of heat shrink & heat with gun to shrink – Allow to cool slightly and then place on connector marked PL05 on the pcb.

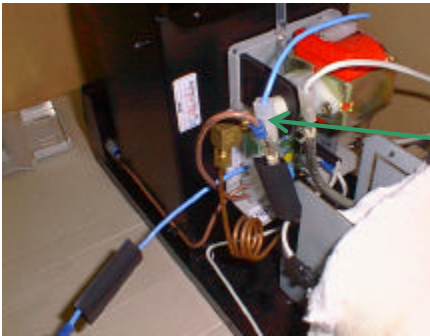


Heat shrink in place



Fitted to Connector PL05

15. Connect the blue wire from the pump to the short brown wire from the connector on the pcb marked 'H' and fit to the leg of the heater element.



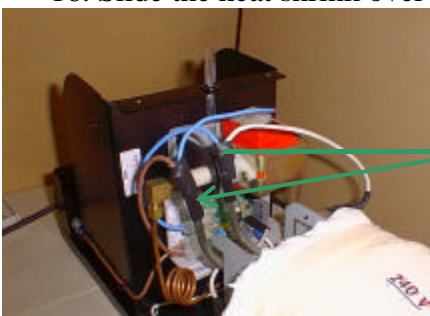
Blue & brown wire in place on the leg of the heater element

15. The remaining thermal wire on the other leg of the heater now connects to the blue wire from the connector on the pcb marked 'N' and fitted back onto the heater leg



Thermal wire & the blue wire from the pcb in place on the heater leg.

16. Slide the heat shrink over the connectors on both legs of the heater and shrink down with a heat gun.



Heat shrink covering the connectors.

17. Plug in the remote and the mains cable, put a bottle of fluid in the compartment and place the fluid Line in it. Connect the mains lead to the supply and switch on and test.
Finally disconnect from the supply and fit the outer casework. If possible place a sticker on the inside of the machine stating who did the upgrade and the date this was done.

PLEASE NOTE THAT THIS UPGRADE WILL NOT WORK UNLESS THE ORIGINAL FAULT HAS BEEN CURED.

Any queries regarding this 'upgrade' please contact:-

Martin Manufacturing (UK) Plc.
Belvoir Way,
Fairfield Industrial Estate,
Louth,
Lincolnshire. LN11 0LQ
Tel - +44 1507 603 143