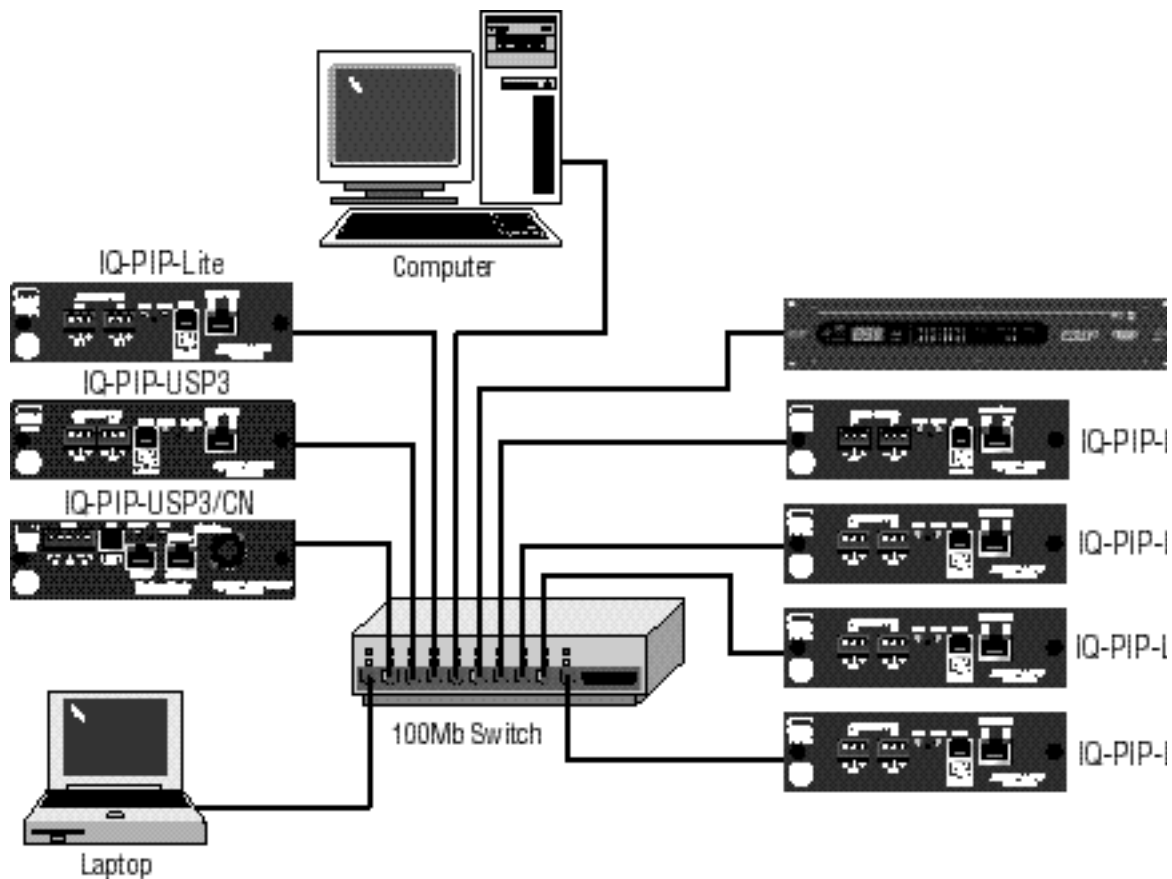


How to Setup TCP/IQ [Introduction to the TCP/IQ Worksheet](#)

This example is based on a standalone system using switches and not routers. The screen captures were done in Windows 2000; your exact configuration may vary. If your computer uses a network for other applications, please check with your IT Department before making any changes.

1. Wire the system using one Category 5 cable per network node (Figure 1). Connect the cables to the network switch for the system. We highly recommend that the CobraNet be a standalone or separate-network LAN. CobraNet with redundancy requires two cables.



2. Select Settings > Control Panel > Network Connections (Figure 2). Set a static TCP/IP address and Subnet mask on the master computer. Document the address and mask.

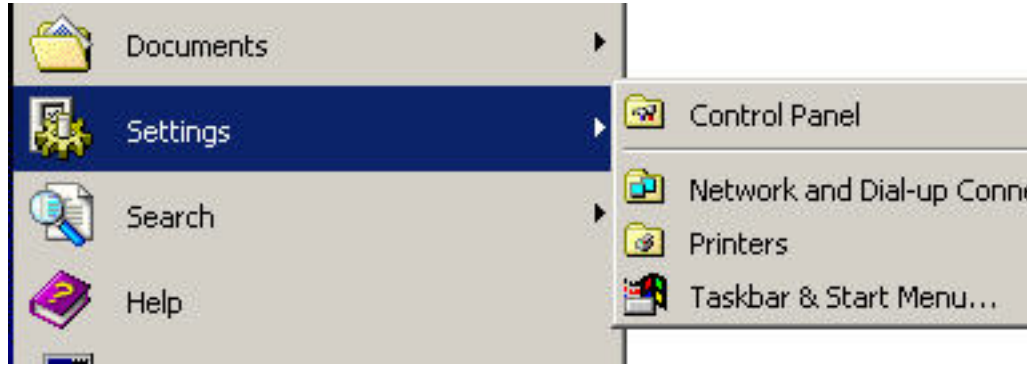


Figure 2. Selecting Settings > Control Panel

2A. Right-click on LAN Connections. Then select Internal > Properties (Figure 3).

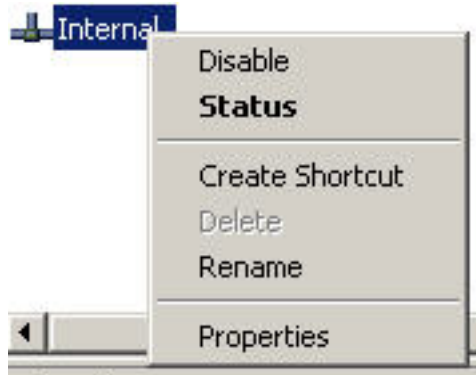


Figure 3. Result of clicking LAN Connections > Internal

2B. Once the Properties window opens (Figure 4), click on Internet Protocol (TCP/IP).

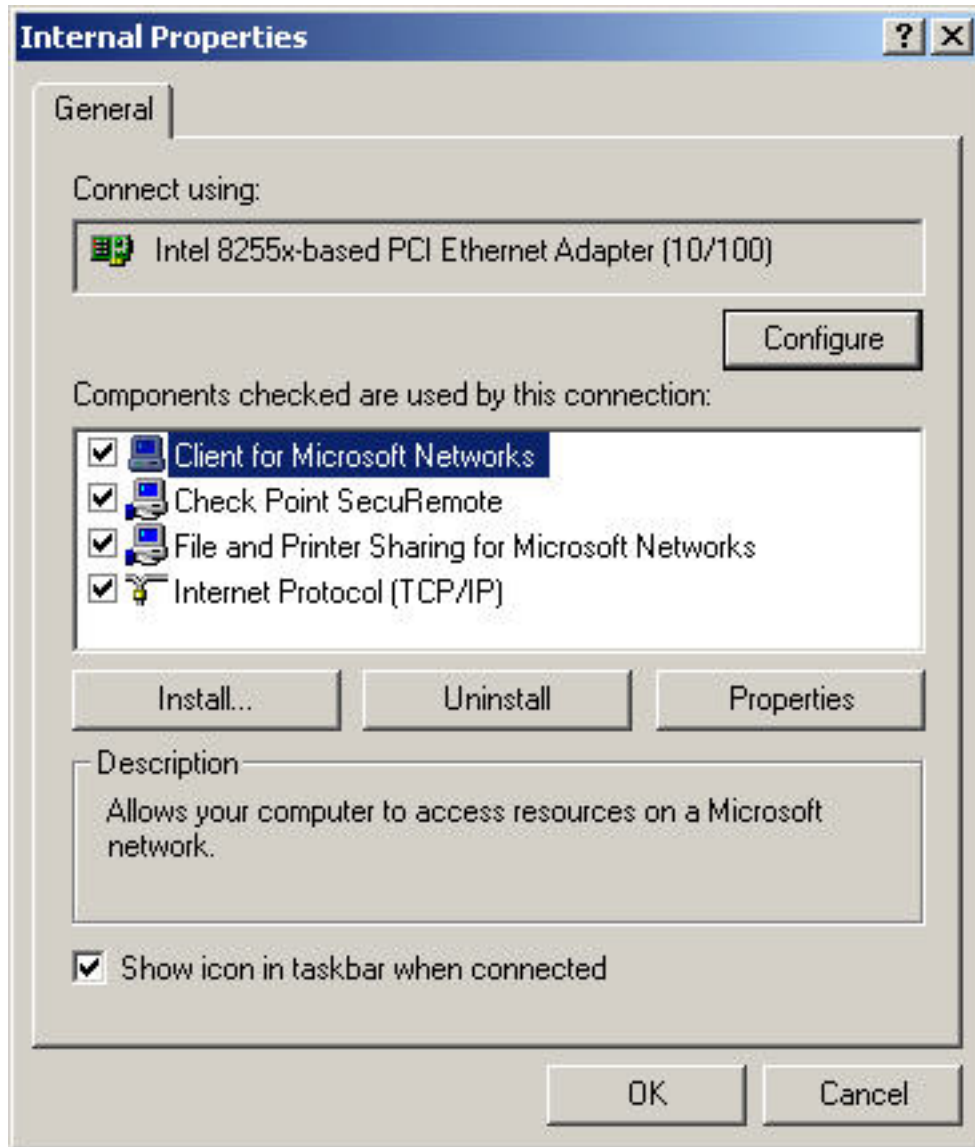


Figure 4. Internal Properties Window

The Internet Protocol (TCP/IP) Properties window appears (Figure 5). Disable Virtual Private Network or other encryption settings.

See the TCP/IP Addressing Worksheet later in this document. Open the supplied Excel worksheet called IQ Worksheet.XLS.

2C. If you need to set an IP address manually, specify an IP address.

The IP address is four numbers between 1 and 255 separated by periods. For example, 126.126.0.1.

Select a

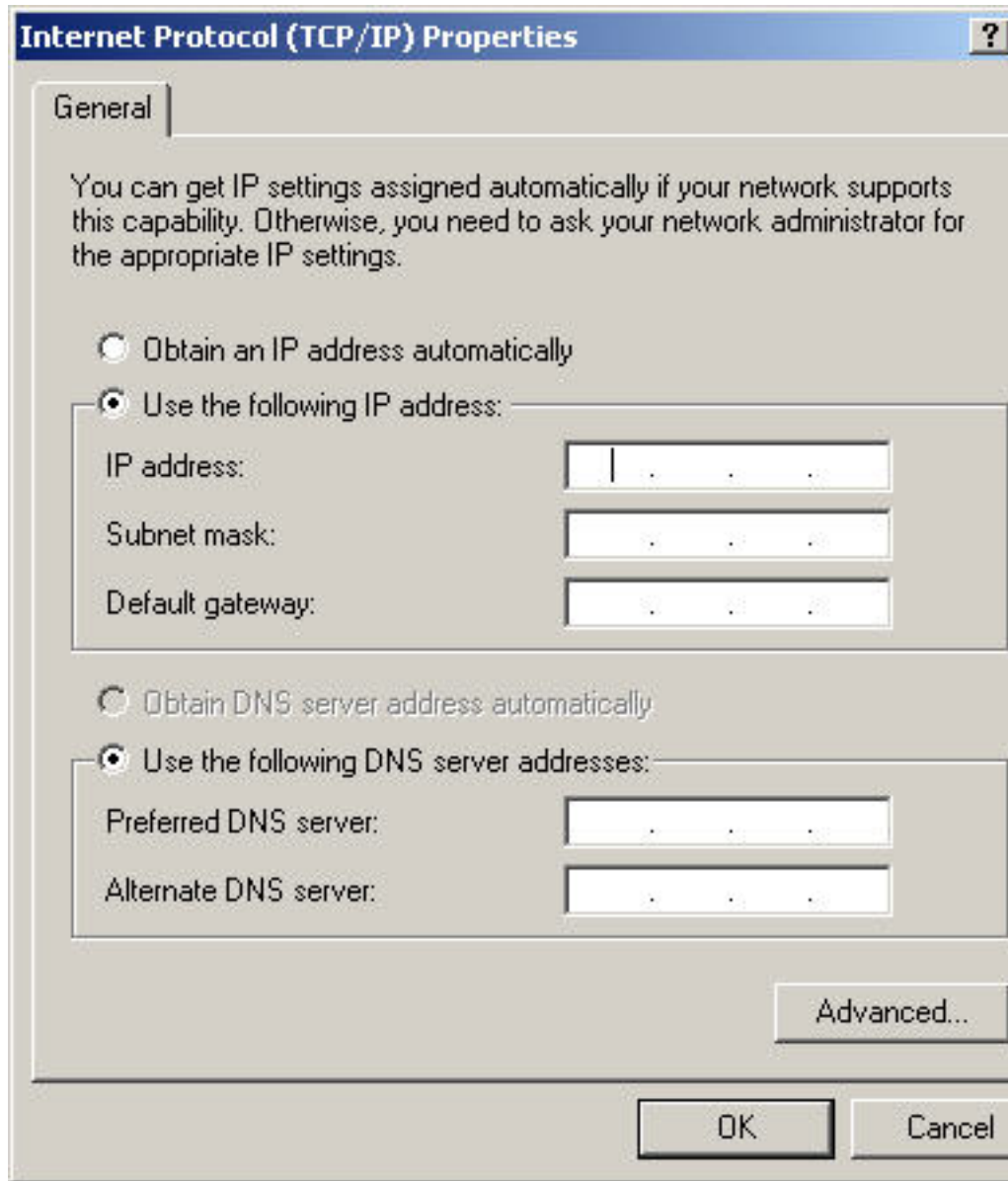


Figure 5. Internet Protocol (TCP/IP) Properties Window

subnet mask. The subnet mask is four numbers between 1 and 255 separated by periods. For example, 255.255.0.0.

2D. Click OK and close the Control Panel. At this point, some computer operating systems will require a restart.

3. Select IQ Systems > IQwic > TCPIQ Utility (Figure 6). This launches the TCP/IQ Utility on the master computer.

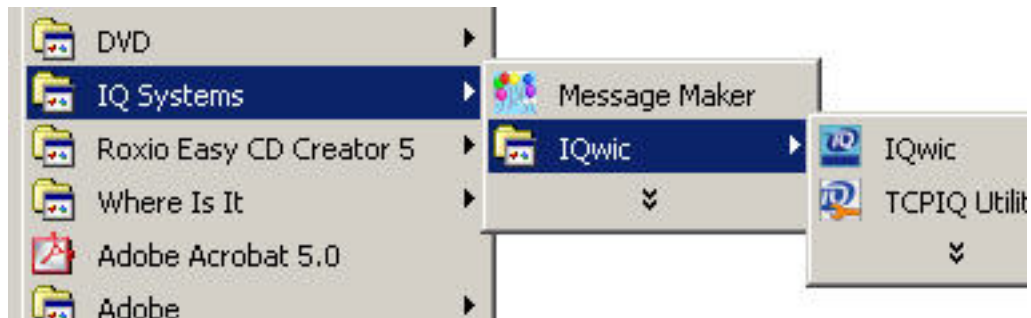


Figure 6. Selecting IQ Systems > IQwic > TCPIQ Utility

3A. The master computer should discover the TCP/IQ products (Figure 7). If not, please refer to "Common Problems" later in this document.

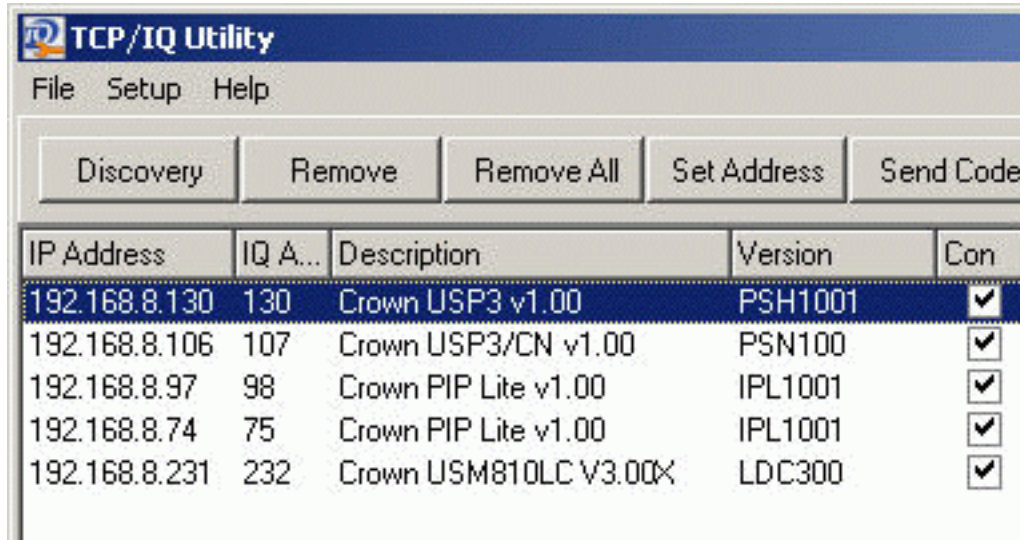


Figure 7. Example of Discovered Components

3B. Update firmware.

3C. Once TCP/IQ Utility has launched, select a single component and click on Set Address. In the Set Address window (Figure 8), set up a TCP/IQ address-it must be unique. Then set up the same Subnet mask for all of the components as well as the master

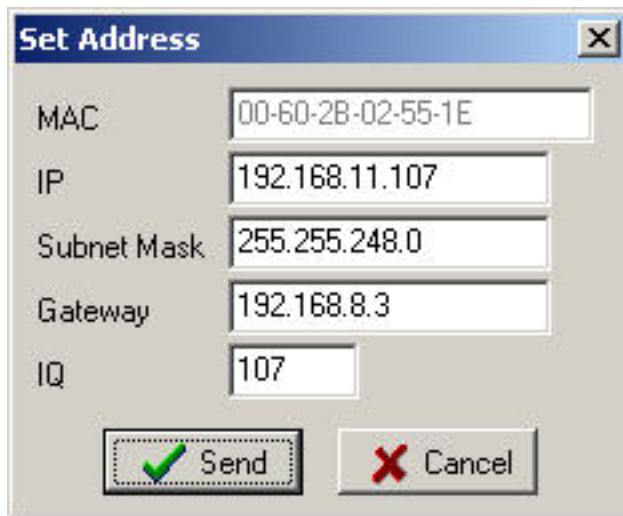


Figure 8. Set Address Window

computer.
Set the IQ
address,
and select
Send
Code.

3D. Close
the
software.
Repeat as
necessary.

4. Launch
IQwic
(Figure 9)
and run a
roll call.



Figure 9. Selecting IQ Systems > IQwic