

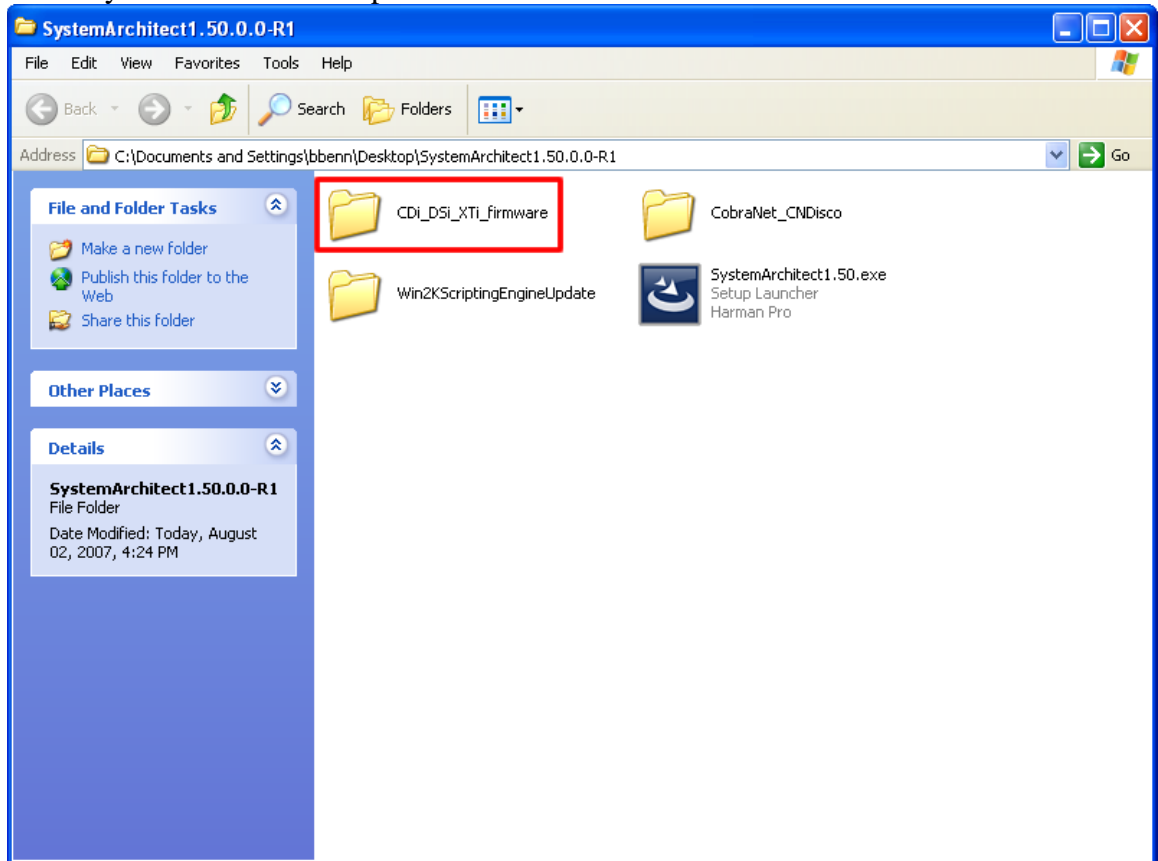
## **CDi, DSi, and XTi Firmware upgrade instructions**

**Important:** Any Crown CDi Series, DSi Series, and XTi Series amplifier manufactured before September 19, 2006 or having a serial number lower than 800129400 will require a firmware update. For amplifiers built after this date, the firmware has already been loaded at the factory. The amplifier will communicate with System Architect without any need for any update. The manufacture date and serial number can be found on the rear of the unit.

Note: Firmware upgrade **must** be done one amplifier at a time using this method. Also, System Architect **must** be closed before updating the firmware through this process.

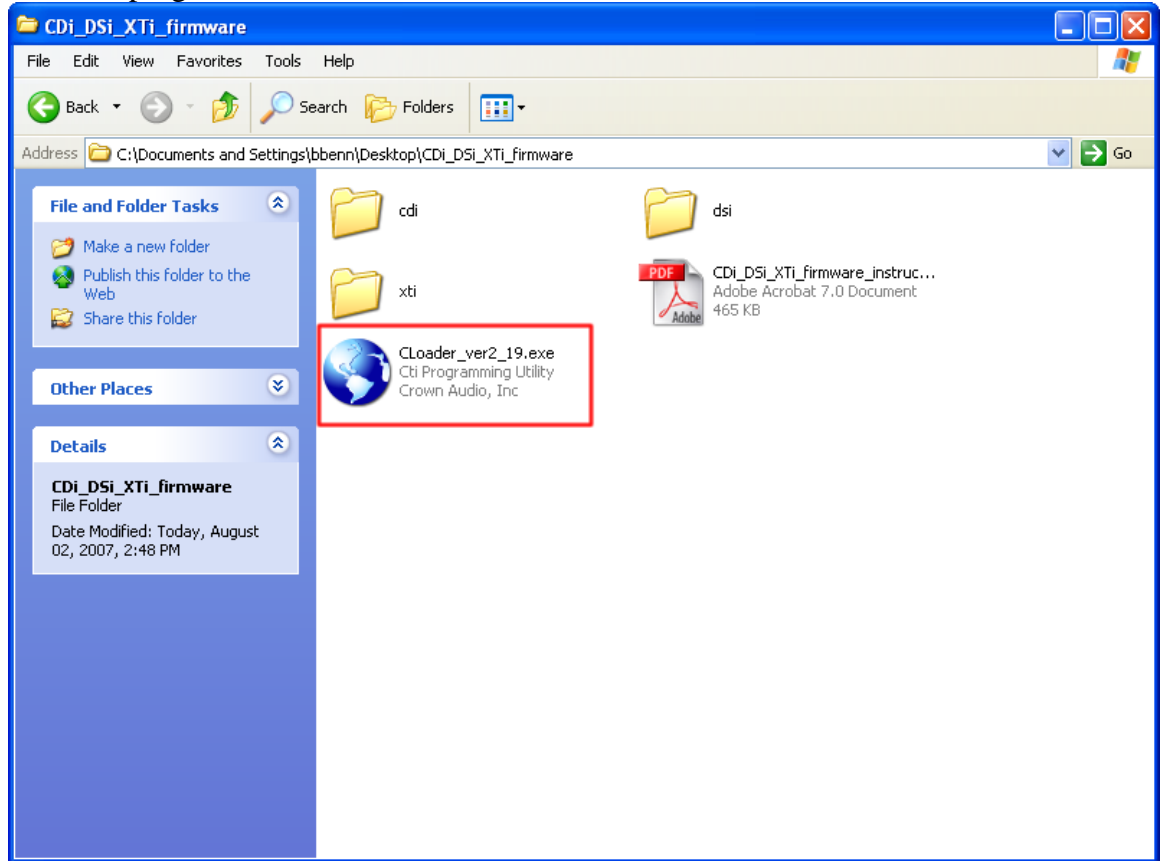
Also the exact filenames in the graphics may vary from the file names illustrated here. Follow the text of the file names in these instructions.

- 1) Copy the CDi\_DSi\_XTi\_firmware folder to your desktop, this folder is included in the System Architect compressed file.



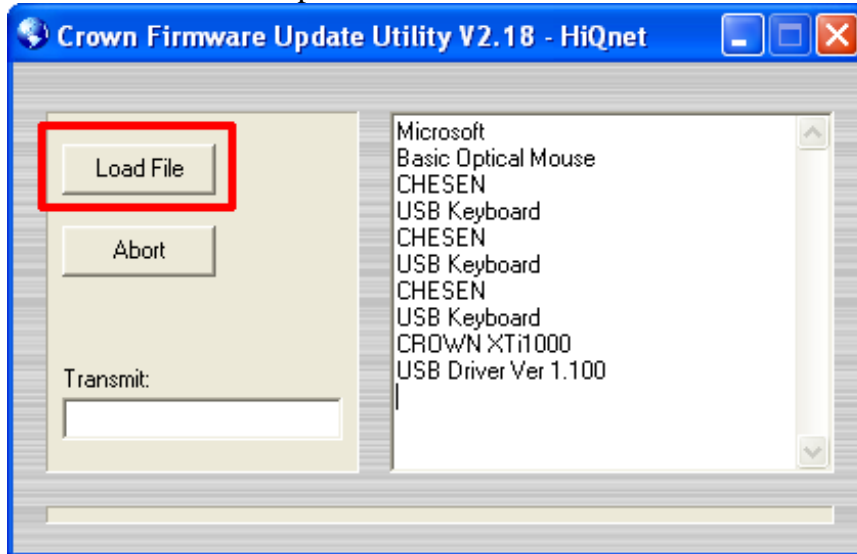
- 2) Connect the USB cable to the amplifier and the computer.
- 3) If the amplifier is not turned on, turn it on.

- 4) After the Windows New Device acknowledgement alert appears open the CLoader program in the folder.



5) Select “Load File” and navigate to the location where the .s firmware file is located for the amplifier.

- CDI1141.s for CDi amplifiers
- DSI1141.s for DSI amplifiers
- XTI1141.s for XTi amplifiers



**Note:** All models of amplifier will display as an XTi1000. All the CDi, XTi, and DSI amplifier use the same USB driver, so CLoader does not distinguish between them.

- 6) Select the file and then “Open”.
- 7) If the software indicates it will not accept the .s file, use the Hex File in the same director.
- 8) The amp front display panel will be displaying “--Wait--” and the channel 1 and channel 2 lights will be alternately flashing.
- 9) “Reboot” will be displayed next on the front of the amp and then it will display “DSP OFF” when completed.
- 10) After the amplifier reboots, the program will verify it has a valid serial number. If it does not, then it will assign one.
- 11) Perform steps 1 through 9 for each amplifier one at a time.
- 12) Close the CLoader program.

**Note:** Once firmware version 1.1.1.10 or higher is installed in the device(s) the CLoader program will no longer be needed as all further installs can be done through the System Architect program.

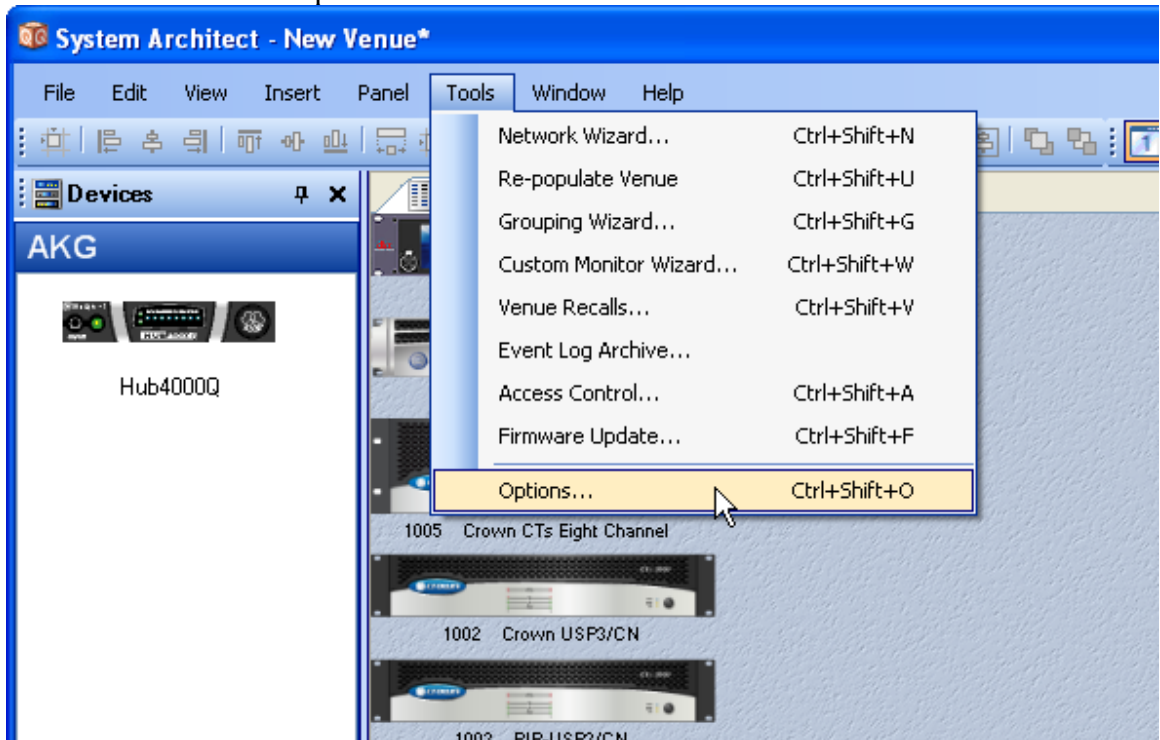
## Configuring System Architect for USB Communication

Typically System Architect is configured to communicate with the USB port, however if it is not or you want to double check perform the following steps

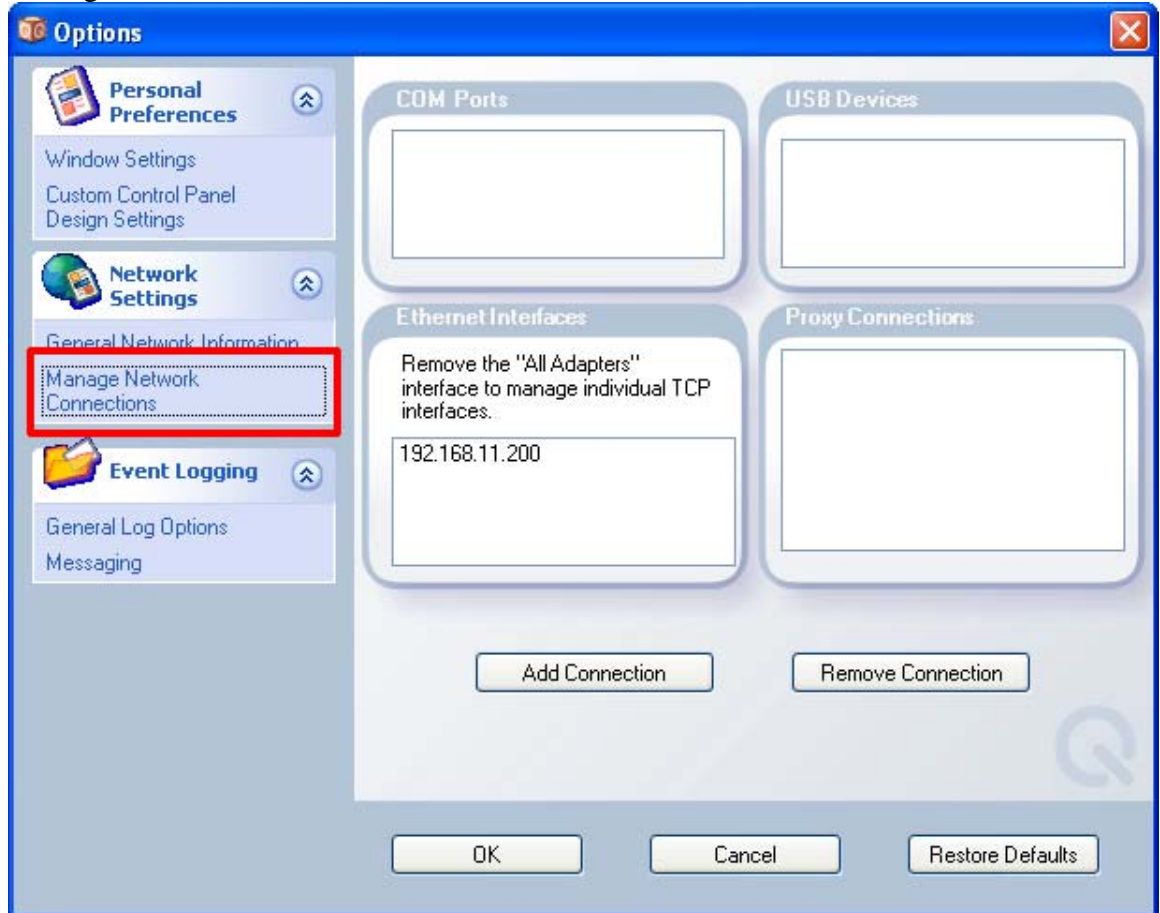
- 1) Start System Architect. In the lower left corner of System Architect will be a white button that should say “Network Active”. If it says “Network Inactive” than left click on it once to activate.



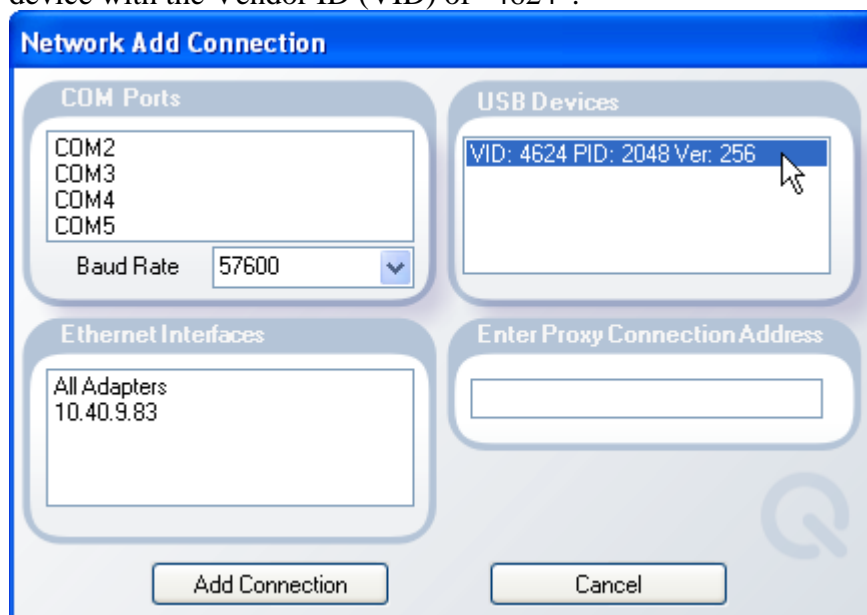
- 2) In a few seconds the amp should appear in the “Venue View Panel. If it does not appear you may need to adjust the network settings. The directions for this task are after this section.
- 3) Select Tools from the Options menu.



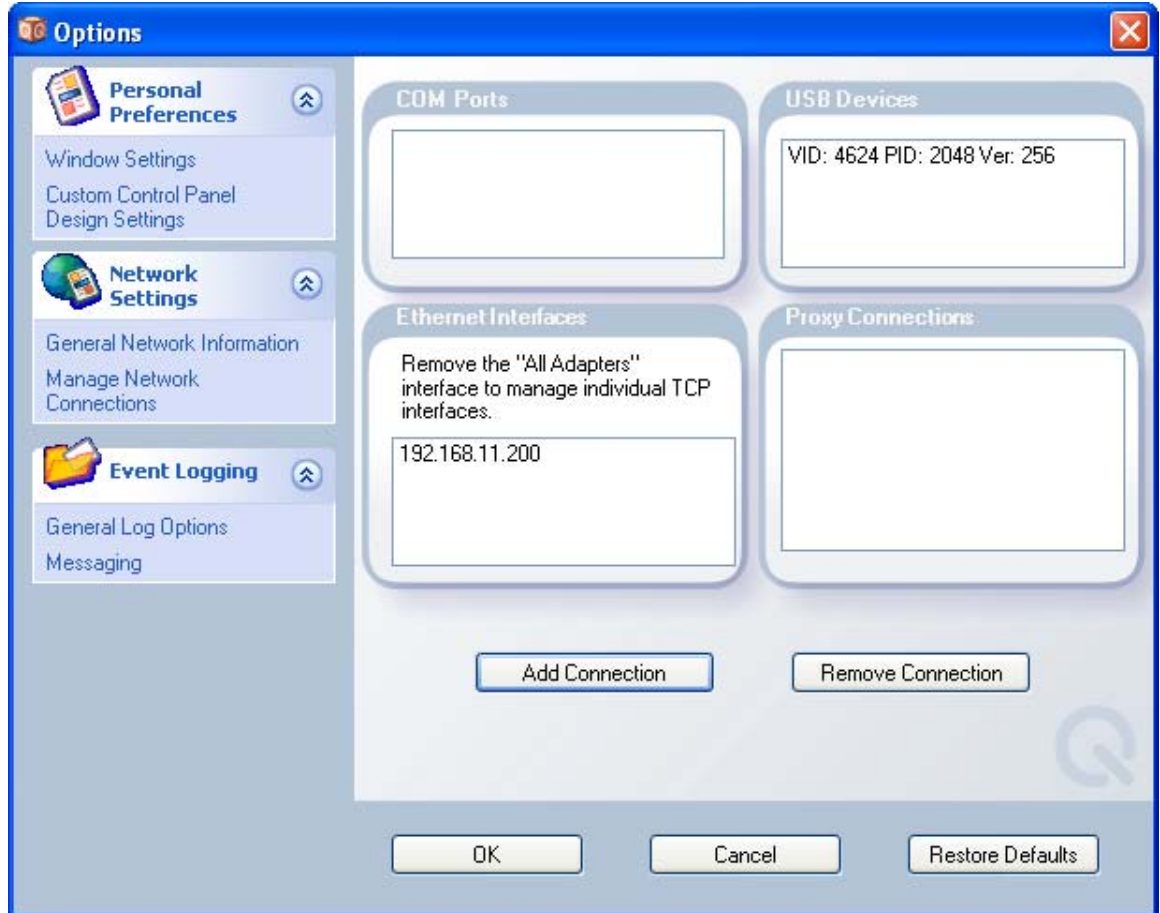
- 4) In the “Options” window select “Manage Network Connections” from “Network Settings”



- 5) Select “Add Connections”
- 6) In the “Network and Connections” window under “USB Devices” select the device with the Vendor ID (VID) of “4624”.



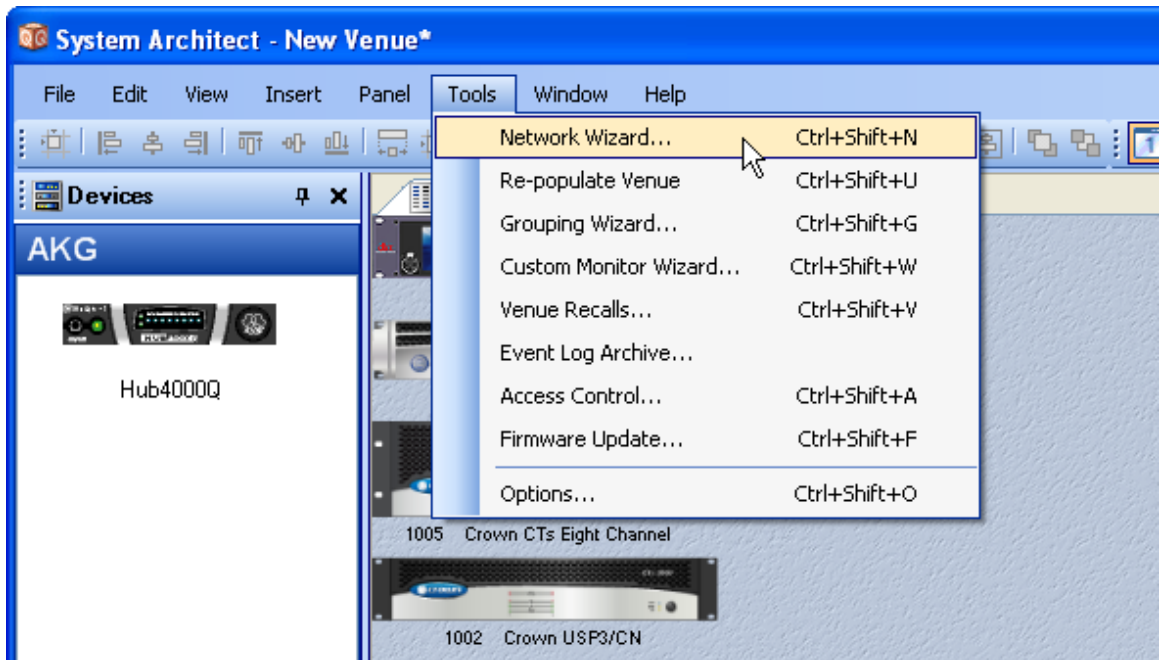
- 7) Select the “Add Connections” Button.
- 8) The new VID should be listed in the “USB Devices” window.



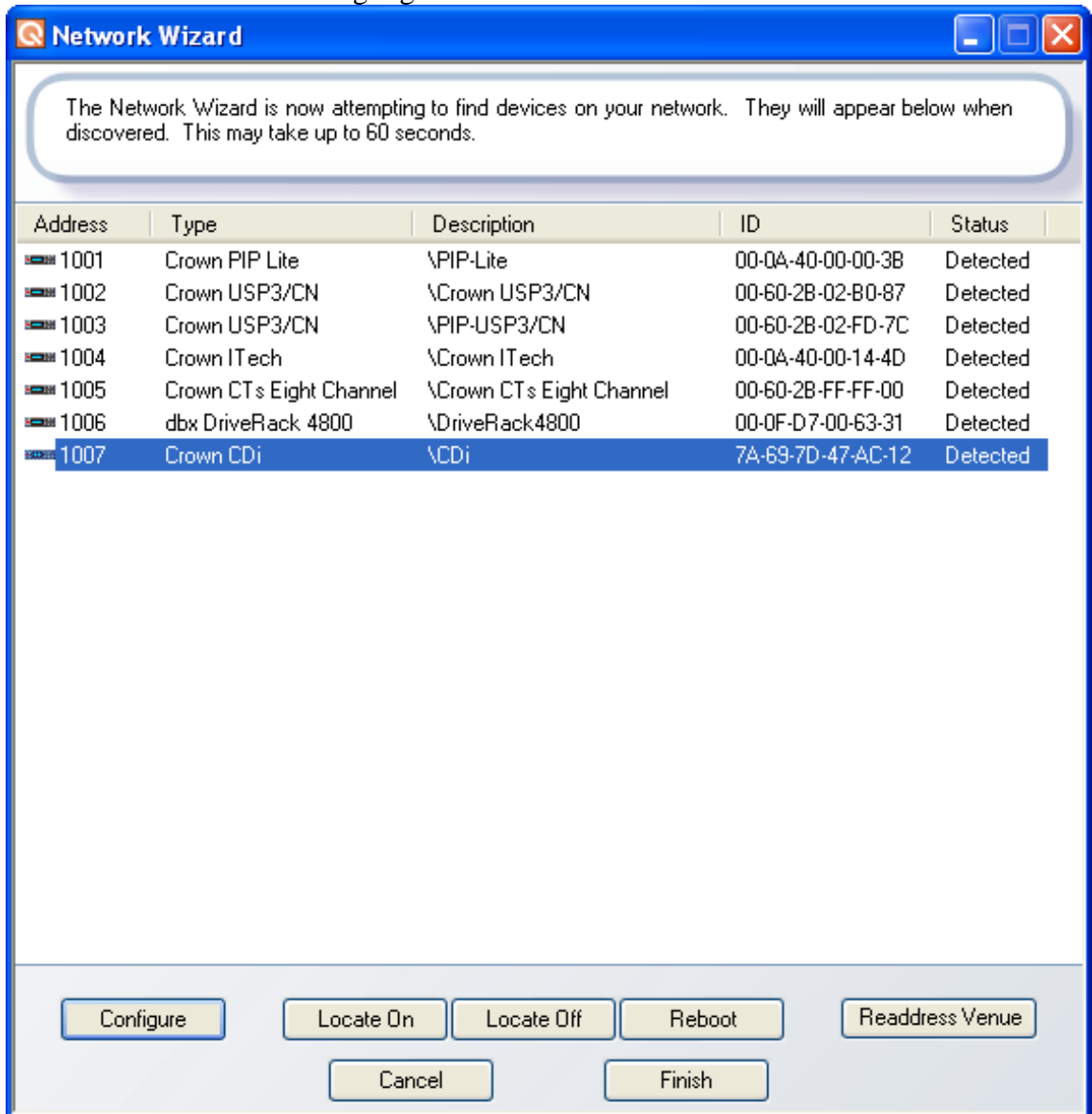
## **Device Addressing:**

Each device will need to have its own unique HiQNet address; the same address can not be used more than once. An address must be below 60,000 currently. When launching System Architect, if there are conflicting addresses an alert will appear warning of duplicate addresses. The CDi, DSi, and XTi amplifiers do not support sequential addressing currently, they do support random addressing.

- 1) Launch System Architect if it is not already running.
- 2) Connect an amplifier to the computer via the USB port.
- 3) After the device appears in the “Venue View” select Network Wizard from the Tools menu.



- 4) Left click on the device to highlight it.



- 5) Select the “Configure” button. If you are not sure which amplifier you have selected, pressing the Locate On button will cause the front panel display to blink. Press Locate off to turn off the locate feature.



- 6) In the “Configure Node” window give the amplifier a HiQnet address that is different than any other device in the network.

The screenshot shows a 'Configure Node' window with a blue title bar. It has two main sections: 'General' and 'Ethernet'. In the 'General' section, it says 'Configuring Device 7A-69-7D-47-AC-12'. There is an 'Address' field with '1007' entered and a 'Readdress Automatically' checkbox. The 'Ethernet' section has a 'MAC Address' dropdown menu, and fields for 'IP Address', 'Subnet Mask', and 'Default Gateway', each with a four-part numeric input field. There is also a 'Use DHCP' checkbox. At the bottom are 'OK' and 'Cancel' buttons.

- 7) In a few seconds the device will appear in the “Network Wizard” with its new address.
- 8) Repeat steps 4 through 6 as necessary
- 9) Select the “Finish” button.
- 10) The amplifier should be now seen in the Venue View with its new address.