

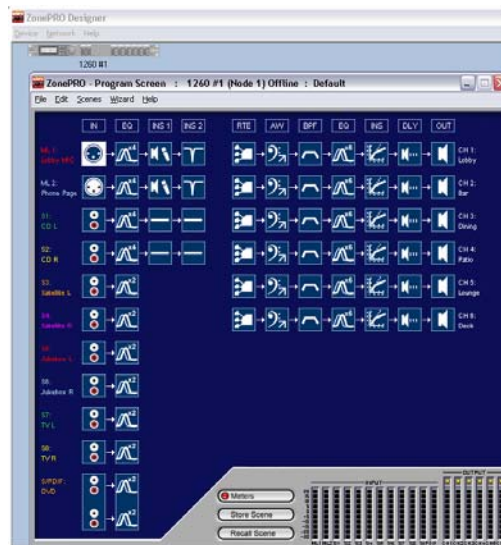


PROFESSIONAL PRODUCTS

ZonePRO String Calculator

Quick Start Guide

Step 1: Program the ZonePRO processor using ZonePRO Designer.



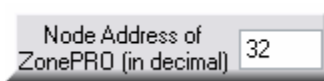
Step 2: Unzip and open the ZonePRO String Calculator.exe file.



Step 3: Select the type of device which you will be controlling.

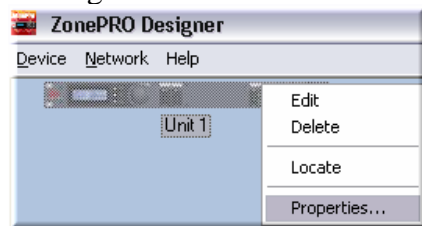


Step 4: Ensure that the Node Address matches the actual Node Address of the ZonePRO processor.

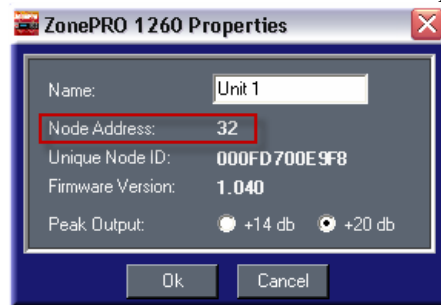


To get the Node Address of the ZonePRO device:

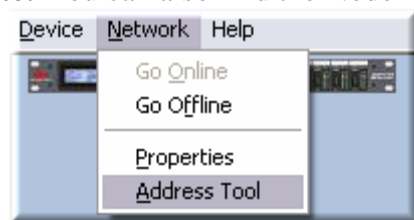
- Right click on the Device Icon and select Properties.



- The Node Address will be displayed.



Note: You can also find the Node Address under Network>Address Tool...



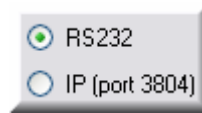
- Then click the Next Button.



- The Node Addresses of all networked ZonePRO devices will be displayed.

Node Address	Unique Node ID	IP Address	Status
18155	ZonePRO Designer	(local)	N/A
32	00-0F-D7-00-E9-F8	N/A	Resolved

Step 5: Select the type of protocol which you will be using for control.



Step 6: Set your Object ID.

Object ID (in decimal)	b0	b1	b2	b3
	30	0	5	1

The Object ID is the address of the processing block you want to control (i.e. Input Block, Output Router Block or Output Mixer Block).

Input Block



Output Router Block

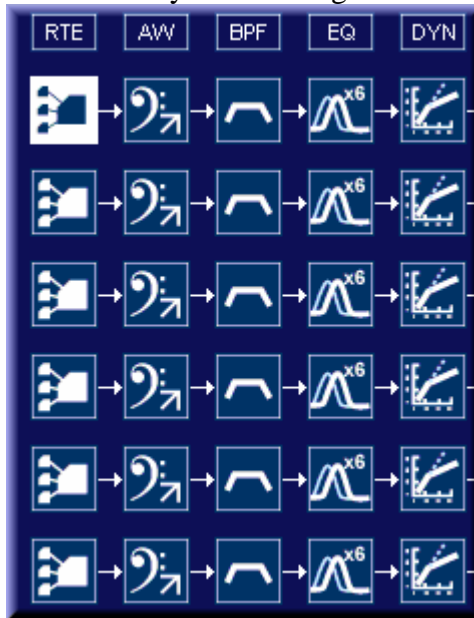


Output Mixer Block

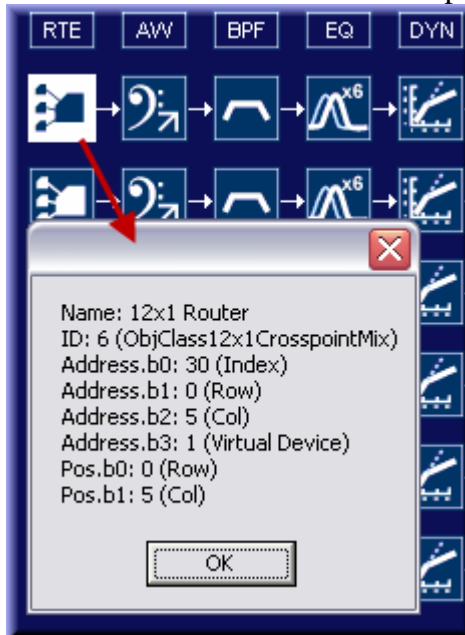


To get the object ID of the Processing Block you would like to control:

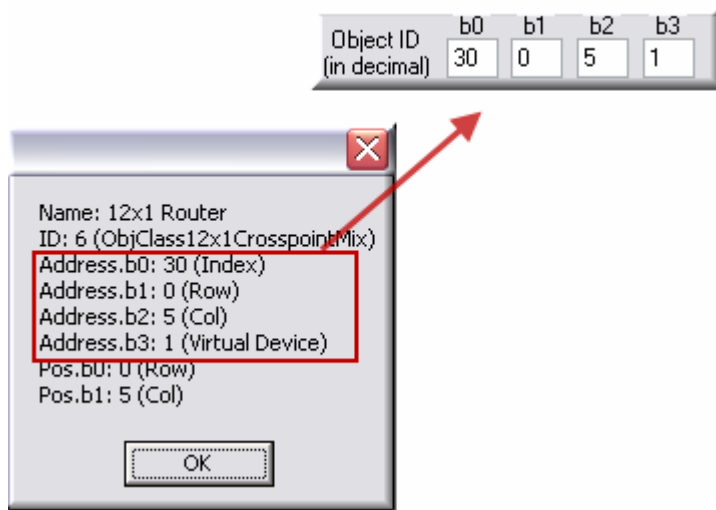
- In ZonePRO Designer, highlight the Processing Block which you desire to control by left clicking on it once.



- Press Ctrl+Shift+o on the computer keyboard to view the Object ID Address.

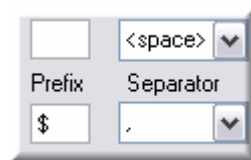


- Enter this Object ID Address into the Object ID field of the String Calculator.



Note: Each channel's Input Block, Output Router Block or Output Mixer Block will have a different Object ID Address!

Step 7: Set the Prefix and Separator per the 3rd Party Control System Manufacturer's requirements.



Step 8: Set the parameter values in which you want to control and the string will be generated.

- **Input** - Use this section for generating the strings for Input Gain control.
- **Output Router** – Use this section for generating the strings for Source Selection, Output Gain and Output Mute/UnMute control, when controlling an Output Router.
- **Output Mixer** – Use this section for generating the strings for Mixer Gain, Output Gain and Output Mute/UnMute control, when controlling an Output Mixer.

The screenshot shows three panels in the String Calculator interface:

- Input:** Contains a 'Gain' section with a dropdown menu set to '- inf' and a 'Volume' button.
- Output Router:** Contains a 'Source Selection' section with a checkbox for 'Master Output' (unchecked) and a dropdown menu set to 'Input 1', followed by a 'Source Select' button. Below this is a 'Gain' section with a dropdown menu set to '- inf' and a 'Volume' button. At the bottom is a 'Muting' section with 'Mute' and 'UnMute' buttons.
- Output Mixer:** Contains a 'Gain' section with a checkbox for 'Master Output' (unchecked) and a dropdown menu set to 'Input 1', followed by a dropdown menu set to '- inf' and a 'Volume' button. At the bottom is a 'Muting' section with 'Mute' and 'UnMute' buttons.

The screenshot shows the output of the String Calculator:

decimal	240 100 0 1 0 0 0 27 0 51 1 5 0 30 0 48 1 5 0 30 1 0 0 0 0 1 0 0 1 1 150
Hex	\$F0,\$64,\$00,\$01,\$00,\$00,\$00,\$1B,\$00,\$33,\$01,\$05,\$00,\$1E,\$00,\$30,\$01,\$05,\$00,\$1E,\$01,\$00,\$00,\$00

Please see the Help file within the String Calculator for further information.

