

---

# UPDATING FIRMWARE ON N-SERIES DEVICES

---



**Step 1:** Configure your computer's NIC to communicate with SVSi devices.

SVSi devices come with a default IP Address of 169.254.XX.XXX. Your computer **MUST** have an IP Address in a similar range in order to communicate properly. Or it must be in the same range as the SVSi devices are currently configured at.

To do this in Windows 7:

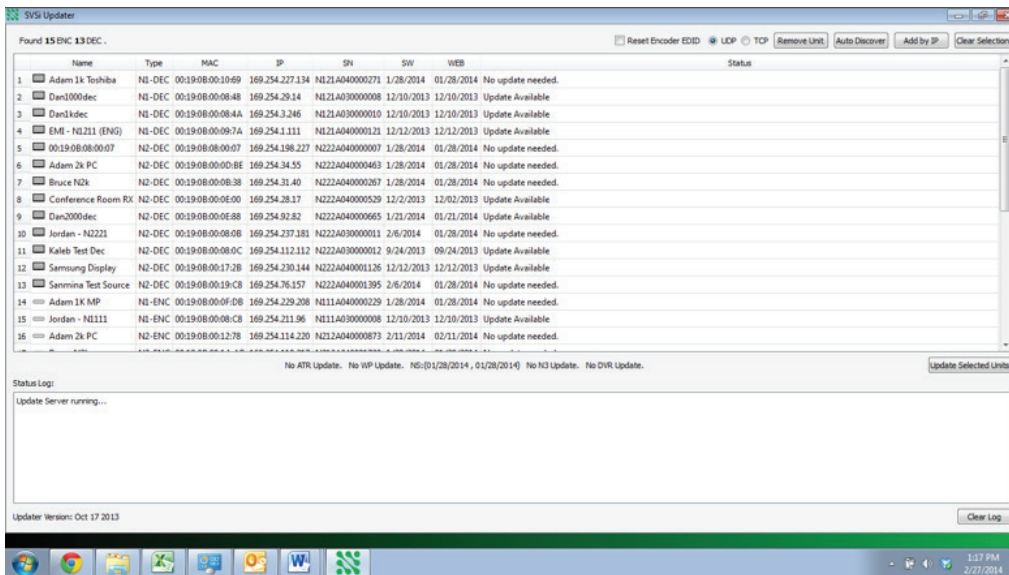
1. Turn off your laptop Wi-Fi adapter (if equipped).
2. Open network and sharing center.
3. Choose "Change Adapter Settings" on the Left hand side of the screen.
4. Locate the appropriate adaptor in your list, and go to its properties (right-click, Properties).
5. Choose TCP/IPv4 and Select Properties.
6. Select "Use the following IP Address"
  - A. Set the computer IP Address to "169.254.20.101"
  - B. Set the subnet mask to "255.255.0.0"
  - C. Select OK.
7. Exit out of the Network and Sharing Center.

**Step 2:** Disable any and all Firewall/Antivirus Software running on your computer (including Windows Firewall)

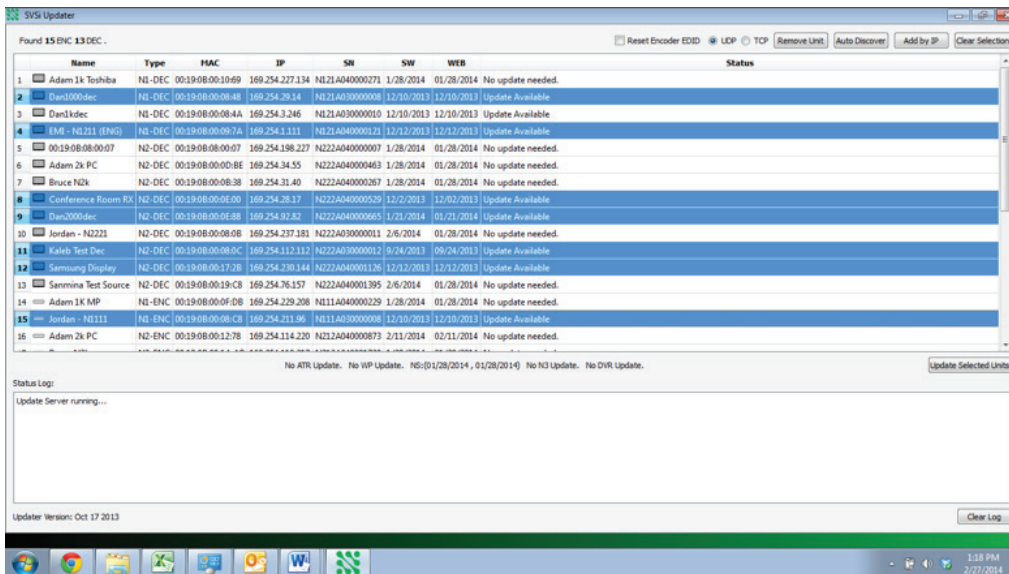
**Step 3:** Run the Updater program.

**Step 4:** Import Netlite Database (if you have previously run Netlite to find devices)

Note: If you have not previously run Netlite, you can choose not to import the database and choose to "Auto Discover" in the Updater program.



**Step 5:** Select the unit(s) you want to update. Multiple units can be selected by holding down the CTRL key and clicking the appropriate units.



**Step 6:** Click “Update Selected Units”.

**Step 7:** The updater will now run and show a status of progress in the lower window.

**Step 8:** After all units have finished updating, exit the Updater.

# ITSIMPLYWORKS

Distribution | Switching | Recording | Windowing | Wall Processing | Control

© Southern Vision Systems, Inc. • 256.461.7143 • [www.svsiav.com](http://www.svsiav.com)

SVSi and voLANte are trademarks of Southern Vision Systems, Inc. in the United States and other countries.

800DOCFIRMTGREV1.0

Made in the U.S.A.

**SVSi**