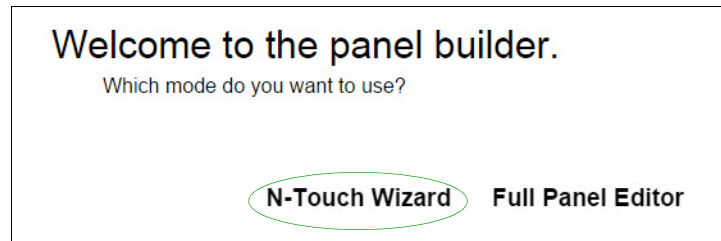

N-Touch Wizard TUTORIAL



Introduction

When you first open **Panel Builder**, the welcome screen (shown below) appears. From this screen, you can choose to launch the easy-to-use **N-Touch Wizard** or use the **Full Panel Editor** tool. For this tutorial, choose **N-Touch Wizard** to continue.

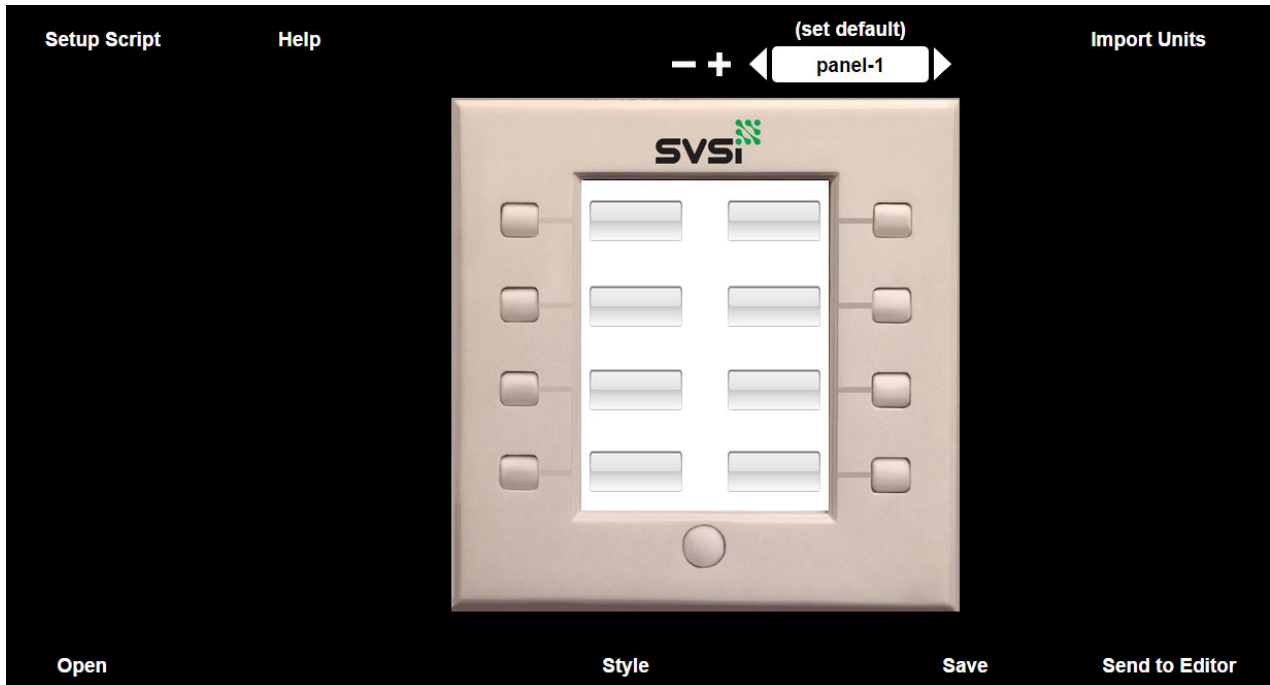


*Note: Buttons created in the wizard do not have a second state. If multi-state buttons are needed, please start in **Full Panel Editor**.*



*Note: **Full Panel Editor** panels cannot be imported back into the **N-Touch Wizard**, but they are compatible with SVSi's **Panel Builder** software on the N8000-series controllers.*

When you first open the **N-Touch Wizard**, an image of your N-Touch Controller displays.



The options available on this screen are described in the following table:

Option	Description
Setup Script	Click to modify a script/function that will execute when the project loads. Possible uses include setting up variables for other scripts to use and requiring controller modules to control specific types of devices.
Help links	Click Help to access the following links: <ul style="list-style-type: none"> Click Wizard Help to open a copy of the <i>Wizard Tutorial</i>. Click Module Help to open a list of SVSi controllers and modules. Click Command Help to open a list of tcp commands used to control SVSi products.
-	Click to delete the current panel from your project.
+	Click to add another panel to your project.
(set default)	Click to set the current panel as the home screen.
Open	Click to open an existing project in the N-Touch Wizard .
Style	Click to alter the style of the current panel. Set the panel's background image, button background images, as well as button text size, color, and font. Clicking Reset reloads the default images onto the panel. Click OK to accept changes/close the Style pane.

Option	Description
Save	Click when you have finished adding panels and commands to your N-Touch project. Choose Here's a link to your project to obtain a hyperlink to your project, or choose Set to Wall Controller to assign the project as the N-Touch panel default display.
Send to Editor	Click to open the current project in the Full Panel Editor mode. This mode allows for the creation of multi-state buttons and conditional logic programming not available in the N-Touch Wizard .

Building a Panel

The following example shows you how to design a system that is a 2x2 matrix for the N8300 N-Touch Wall Controller consisting of the following:

- Two SVSi N-Series Encoders on streams 120 and 153.
- Two SVSi N-Series Decoders on IP addresses 169.254.198.227 and 169.254.34.55.



Note: You can use SVSi's free N-Able software to set or determine stream numbers and IP addresses on your SVSi equipment. This software is available for download on your PC or Mac at <http://svsiav.com/support/resources/software>.

1. Using the **N-Touch Wizard**, create a panel with four buttons. To create the first button, follow the example in the screen shot below.

a) Click Button 1 to display its properties pane.

b) Select **tcpclient** from the drop-down menu.

c) Click **add**.

d) Edit the displayed commands to match your configuration.

e) Continue in this manner for Buttons 2 through 4 (refer to the table on the next page for details).

```
1 //sends message/data to a device
2 tcpclient('192.168.1.12', 50001, asciiToHex('message/data'));
3
4
```

2. After you click **add**, default tcp commands display (as shown in the previous screen shot).

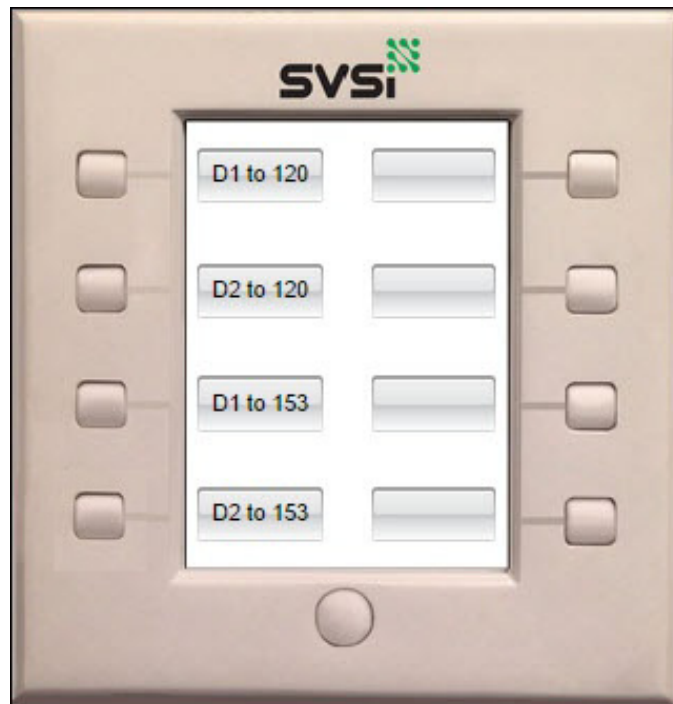
3. Edit the last line of the tcp command to customize it to your configuration. Use the following table as a guide as you set up each of the four buttons:

Button	Selections	Function
Button 1 (as shown in the previous screen shot)	<ul style="list-style-type: none"> Click the button to display its properties pane. Select tcpclient from the Command drop-down menu and click add. Edit the last line to read as follows: <pre>tcpclient("169.254.198.227", 50001, asciiToHex("set:120"));</pre> Enter D1 to 120 in the Button Text field. 	When this button is pressed on the N-Touch Controller, Decoder 1 will switch to stream 120.
Button 2	<ul style="list-style-type: none"> Click the button to display its properties pane. Select tcpclient from the Command drop-down menu and click add. Edit the last line to read as follows: <pre>tcpclient("169.254.34.55", 50001, asciiToHex("set:120"));</pre> Enter D2 to 120 in the Button Text field. 	When this button is pressed on the N-Touch Controller, Decoder 2 will switch to stream 120.
Button 3	<ul style="list-style-type: none"> Click the button to display its properties pane. Select tcpclient from the Command drop-down menu and click add. Edit the last line to read as follows: <pre>tcpclient("169.254.198.227", 50001, asciiToHex("set:153"));</pre> Enter D1 to 153 in the Button Text field. 	When this button is pressed on the N-Touch Controller, Decoder 1 will switch to stream 153.
Button 4	<ul style="list-style-type: none"> Click the button to display its properties pane. Select tcpclient from the Command drop-down menu and click add. Edit the last line to read as follows: <pre>tcpclient("169.254.34.55", 50001, asciiToHex("set:153"));</pre> Enter D2 to 153 in the Button Text field. 	When this button is pressed on the N-Touch Controller, Decoder 2 will switch to stream 153.

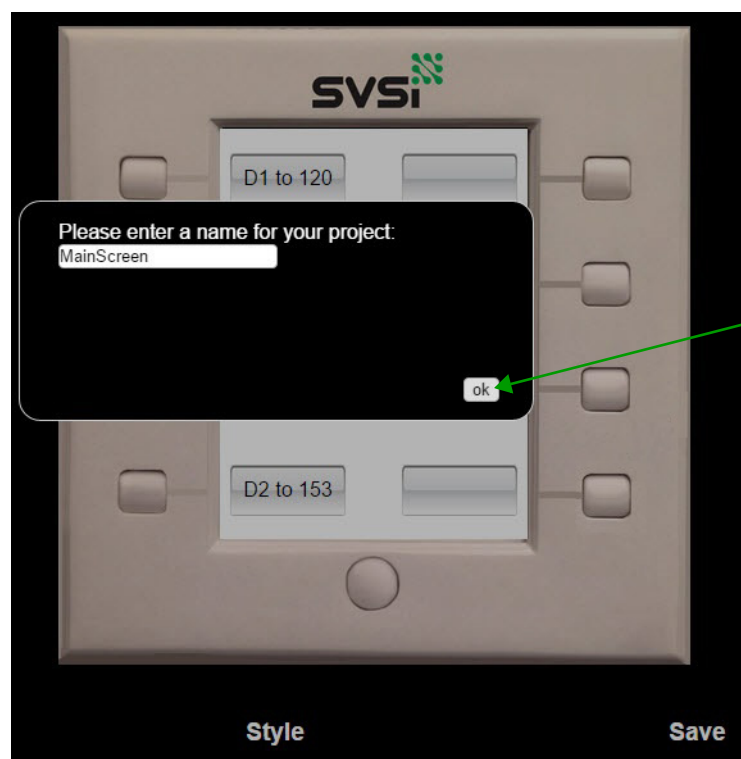


*Note: You can add any number of tcp and udp commands to be executed when the panel button is pressed. For more commands that can be sent as tcp hex commands, click **Help > Command Help** (located at the top of the **Wizard's** main screen).*

- Once you have added all four buttons, the resulting screen should look like this.

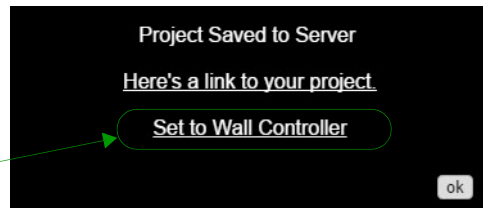


- Click **Save** and enter a name for your project.
- Click **ok** to save the project.

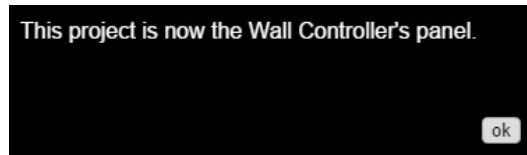


7. The following screen displays, giving you the option to test your new panel out in the web browser (and get a link to your project) or send the new panel directly to the N-Touch Controller. For this tutorial, click **Set to Wall Controller**.

Click to make this panel appear on the N-Touch Wall Controller's default screen.



8. Loading the panel to the N-Touch Controller takes a few seconds. When complete, the following message displays to let you know the panel loaded successfully.



IT SIMPLY WORKS

Distribution | Switching | Recording | Windowing | Wall Processing | Control

© Southern Vision Systems, Inc. • 256. 461.7143 • www.svsia.com

SVSi is a trademark of Southern Vision Systems, Inc. in the United States and other countries.

All other brand names, product names and trademarks are the property of their respective owners. Certain trademarks, registered trademarks, and trade names may be used to refer to either the entities claiming the marks and names or their products. SVSi disclaims any interest in the marks and names of others.

800DOCN8300TTRL-2REV1.4



Made in the USA.

